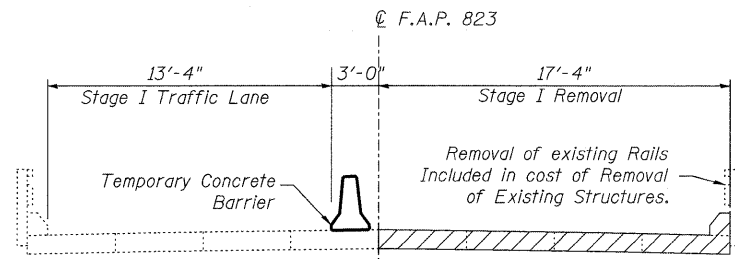
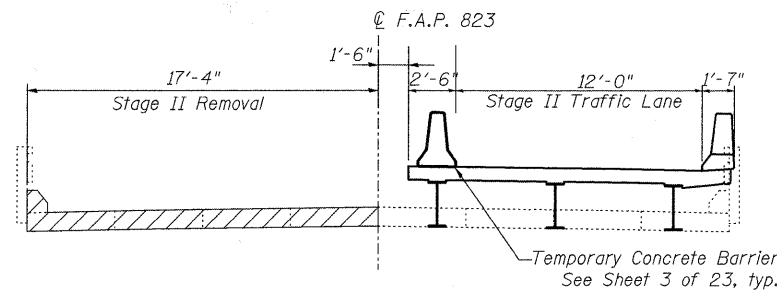


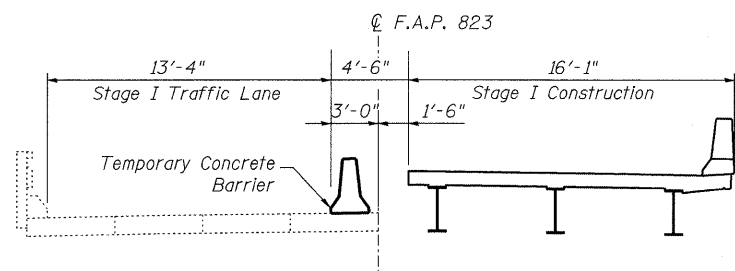
STATE OF ILLINOIS
DEPARTMENT OF TRANSPORTATION



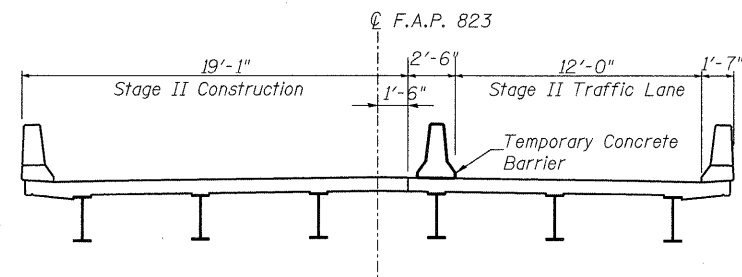
STAGE I REMOVAL
(Looking West)



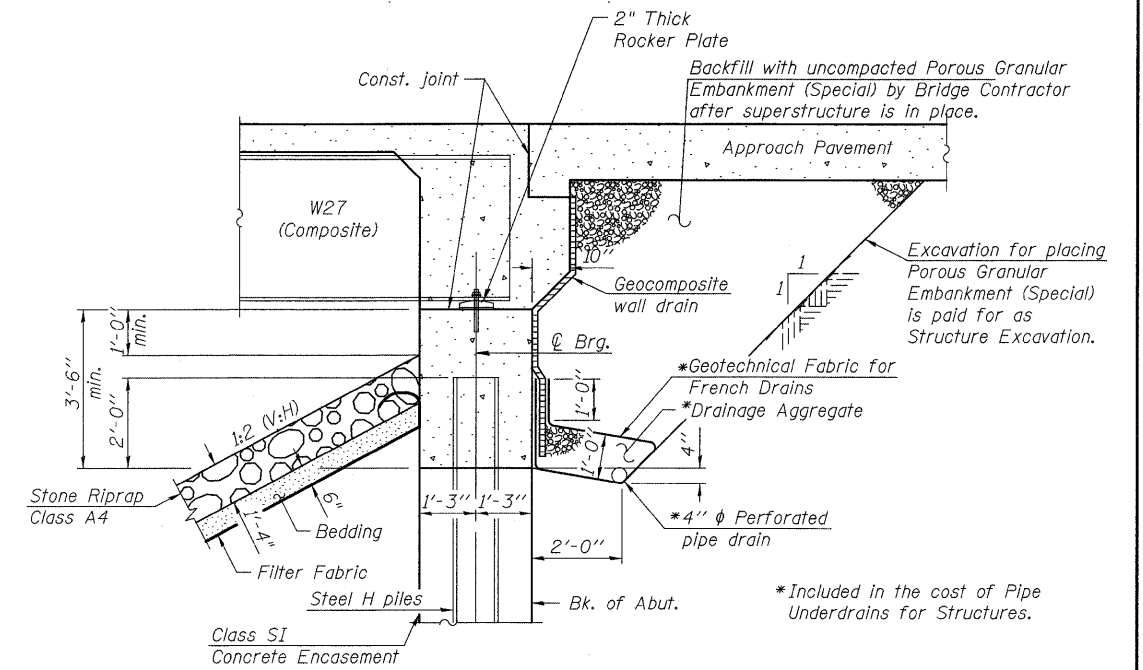
STAGE II REMOVAL
(Looking West)



STAGE I CONSTRUCTION
(Looking West)



STAGE II CONSTRUCTION
(Looking West)



SECTION THRU INTEGRAL ABUTMENT

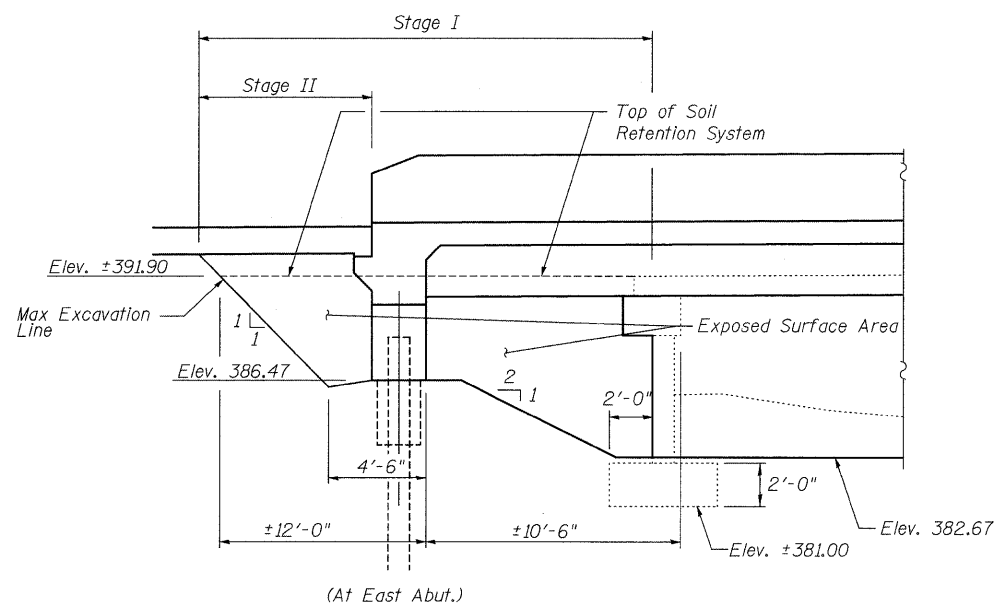
All drainage system components shall extend to 2'-0' from the end of each wingwall except an outlet pipe shall extend down to flowline of adjacent ditch. The pipes shall drain into concrete headwalls. (See Article 601.05 of the Standard Specifications and Highway Standard 601101).

NOTES

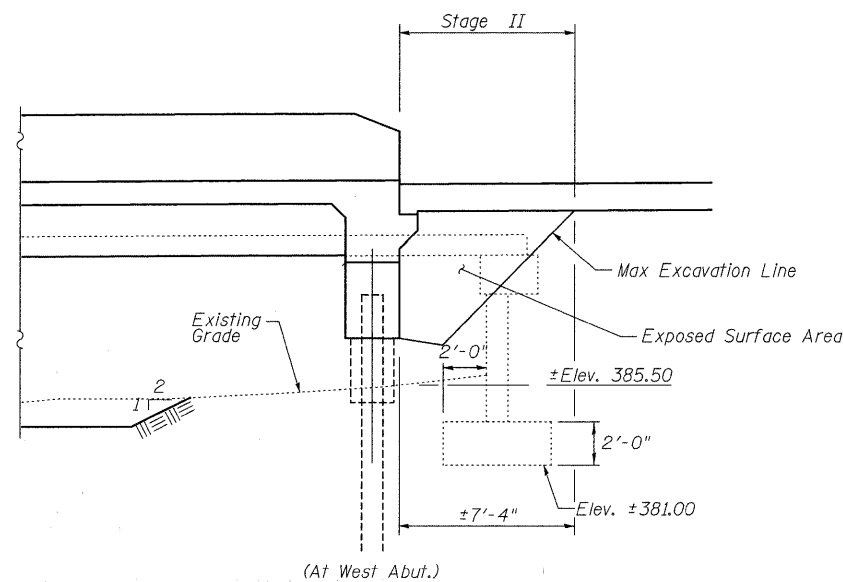
A cantilevered sheet piling design does not appear feasible and additional members or other retention systems may be necessary. The Contractor shall submit a temporary soil retention system design including plan details and calculations for review and acceptance by the Engineer.

The Contractor shall excavate behind the existing abutment walls prior to removal of the existing superstructure and shall saw cut the existing abutment walls at the Stage Removal Line prior to Stage I Superstructure Removal.

STAGE CONSTRUCTION DETAILS
IL 15 OVER UNION DRAINAGE
DITCH OVERFLOW
WAYNE COUNTY
STATION 295+41.00
STRUCTURE NO. 096-0072



TEMPORARY SOIL RETENTION SYSTEM
(Looking South)



SHEET NO. 2 23 SHEETS	F.A.P. RTE. 823	SECTION (22BY2) B-1	COUNTY WAYNE	TOTAL SHEETS 142	SHEET NO. 39
	CONTRACT NO. 74238				
FED. ROAD DIST. NO.		ILLINOIS	FED. AID PROJECT		