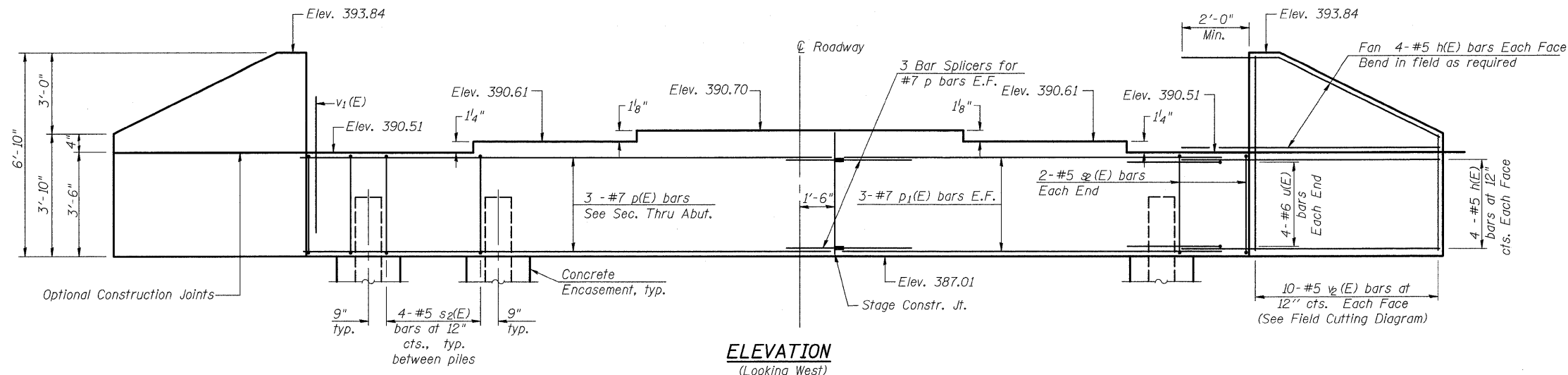
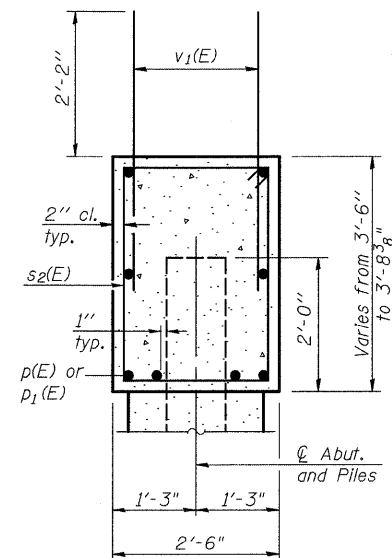


Notes: Pour steps monolithically with cap.



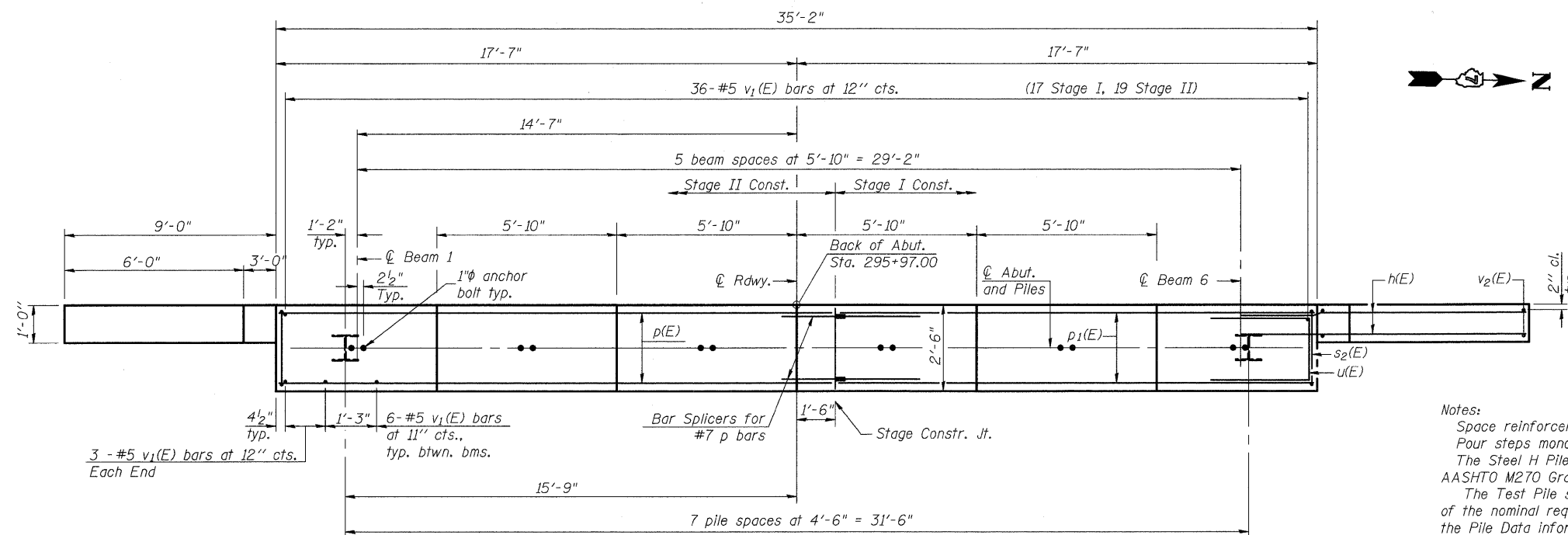
ELEVATION
(Looking West)



SEC. THRU ABUT.

BILL OF MATERIAL

Bar	No.	Size	Length	Shape
h(E)	32	#5	10'-10"	—
p(E)	6	#7	18'-9"	—
p1(E)	6	#7	15'-9"	—
s2(E)	32	#5	11'-7"	□
u(E)	8	#6	10'-1"	□
v1(E)	72	#5	4'-4"	—
v2(E)	20	#5	10'-0"	—
Concrete Structures	Cu. Yd.	15.5		
Reinforcement Bars, Epoxy Coated	Pound	1990		
Furnishing Steel Piles, HP 14x73	Foot	385		
Driving Piles	Foot	385		
Test Pile, HP 14x73	Each	1		
Concrete Encasement	Cu. Yd.	4.4		
Bar Splicers	Each	6		

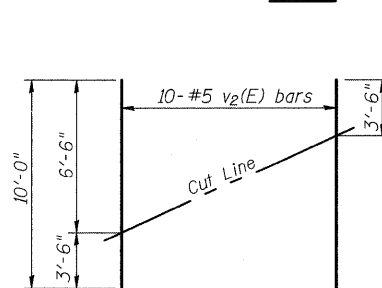


PLAN

Notes:
Space reinforcement in cap to miss anchor bolts.
Pour steps monolithically with cap.
The Steel H Piles shall be according to AASHTO M270 Grade 50.
The Test Pile shall be driven to 110 percent of the nominal required bearing indicated in the Pile Data information.
For details of piles and Concrete Encasement, see sheet 19 of 23.

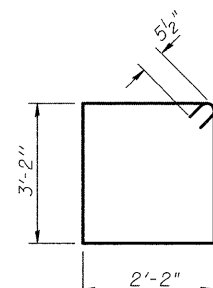
PILE DATA

Type: Steel HP 14x73
Nominal Required Bearing: 578k
Factored Resistance Available: 141k
Est. Length: 55 ft.
No. Production Piles: 7
No. Test Piles: 1

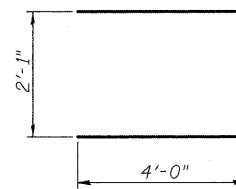


FIELD CUTTING DIAGRAM

Order v2(E) full length. Cut as shown and use remainder of bars in opposite face.



BAR s2(E)



BAR u(E)

WEST ABUTMENT
IL 15 OVER UNION DRAINAGE
DITCH OVERFLOW
WAYNE COUNTY
STATION 295+41.00
STRUCTURE NO. 096-0072

SHEET NO. 15 23 SHEETS	F.A.P. RTE.	SECTION	COUNTY	TOTAL SHEETS	SHEET NO.
	823	(22BY2) B-1	WAYNE	142	52
CONTRACT NO. 74238					
FED. ROAD DIST. NO.		ILLINOIS	FED. AID PROJECT		