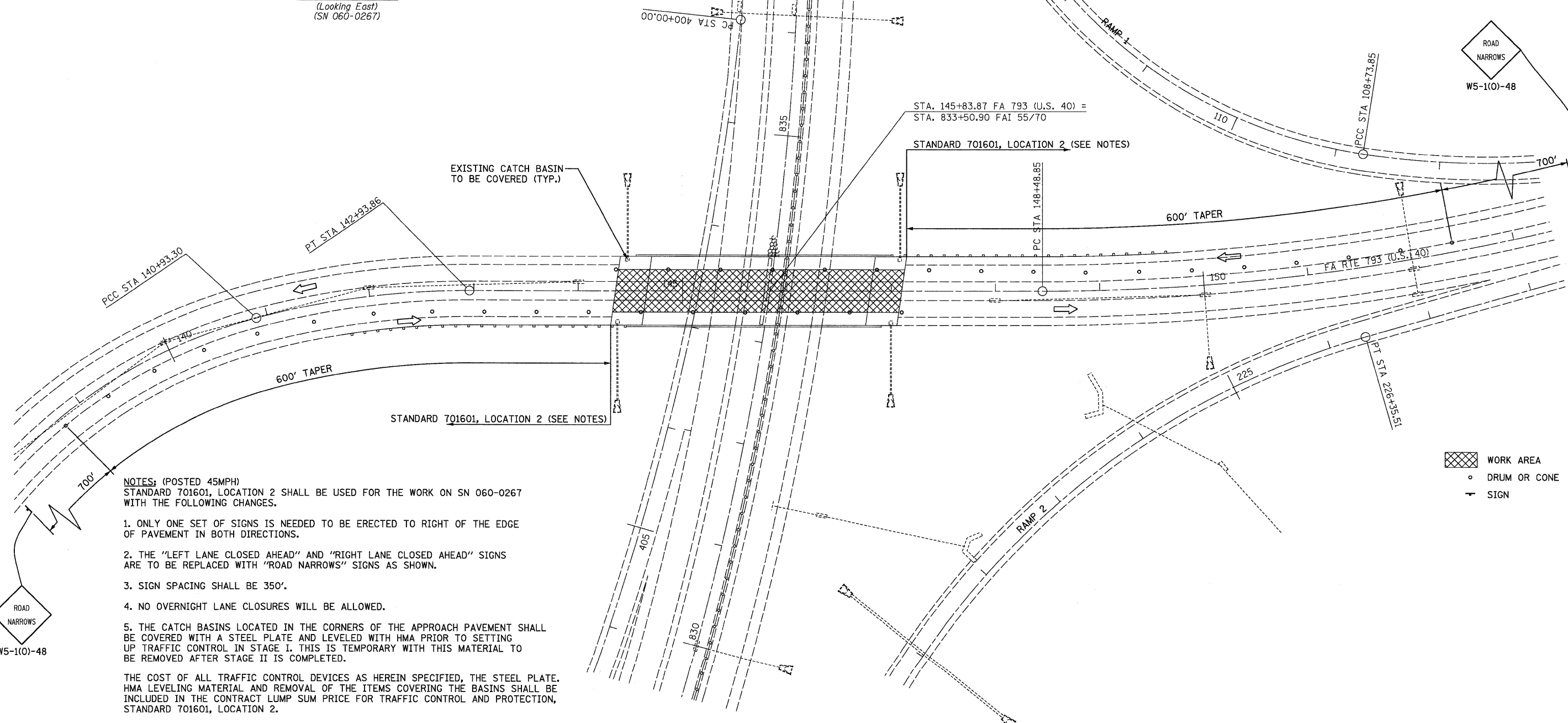
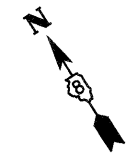


CROSS SECTION
(Looking East)
(SN 060-0267)



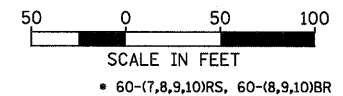
NOTES: (POSTED 45MPH)
STANDARD 701601, LOCATION 2 SHALL BE USED FOR THE WORK ON SN 060-0267 WITH THE FOLLOWING CHANGES.

1. ONLY ONE SET OF SIGNS IS NEEDED TO BE ERECTED TO RIGHT OF THE EDGE OF PAVEMENT IN BOTH DIRECTIONS.
2. THE "LEFT LANE CLOSED AHEAD" AND "RIGHT LANE CLOSED AHEAD" SIGNS ARE TO BE REPLACED WITH "ROAD NARROWS" SIGNS AS SHOWN.
3. SIGN SPACING SHALL BE 350'.
4. NO OVERNIGHT LANE CLOSURES WILL BE ALLOWED.
5. THE CATCH BASINS LOCATED IN THE CORNERS OF THE APPROACH PAVEMENT SHALL BE COVERED WITH A STEEL PLATE AND LEVELED WITH HMA PRIOR TO SETTING UP TRAFFIC CONTROL IN STAGE I. THIS IS TEMPORARY WITH THIS MATERIAL TO BE REMOVED AFTER STAGE II IS COMPLETED.

THE COST OF ALL TRAFFIC CONTROL DEVICES AS HEREIN SPECIFIED, THE STEEL PLATE, HMA LEVELING MATERIAL AND REMOVAL OF THE ITEMS COVERING THE BASINS SHALL BE INCLUDED IN THE CONTRACT LUMP SUM PRICE FOR TRAFFIC CONTROL AND PROTECTION, STANDARD 701601, LOCATION 2.



- WORK AREA
- DRUM OR CONE
- SIGN



FILE NAME = ...N0876A73-ehh-staging05.dgn	USER NAME = SJS	DESIGNED -	REVISED -	STATE OF ILLINOIS DEPARTMENT OF TRANSPORTATION	STAGE I TRAFFIC CONTROL S.N. 060-0267			F.A.I. RTE. 70	SECTION .	COUNTY MADISON	TOTAL SHEETS 150	SHEET NO. 59
	PLOT SCALE = 50.0000' / IN.	DRAWN -	REVISED -		SCALE:	SHEET NO.	OF SHEETS	STA.	TO STA.	FED. ROAD DIST. NO.	ILLINOIS FED. AID PROJECT	CONTRACT NO. 76A73
	PLOT DATE = 06/12/2009 09:25:17	CHECKED -	REVISED -									
		DATE -	REVISED -									