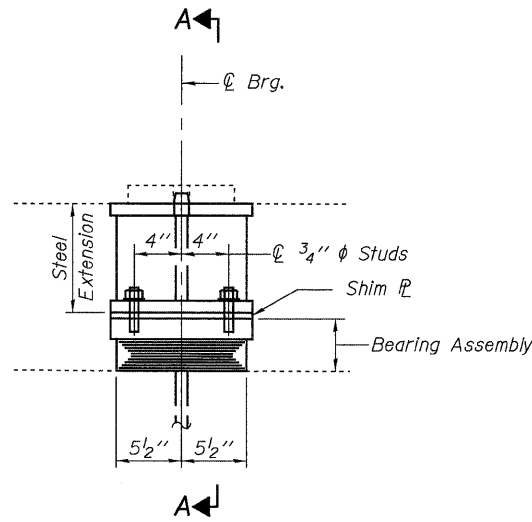
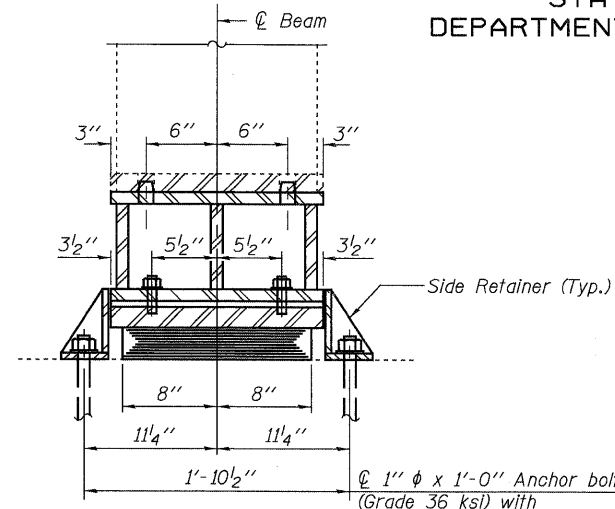


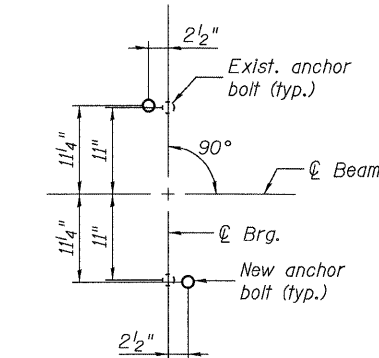
STATE OF ILLINOIS
DEPARTMENT OF TRANSPORTATION



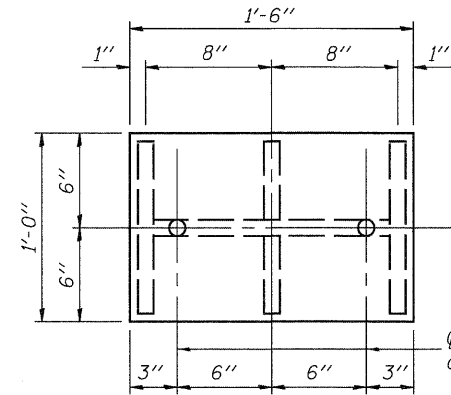
ELEVATION



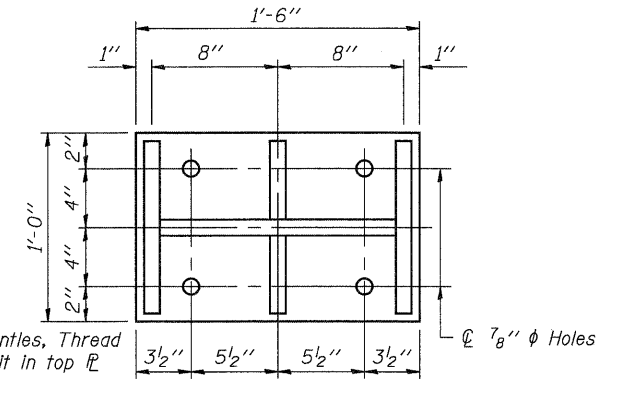
SECTION A-A



ANCHOR BOLT LAYOUT

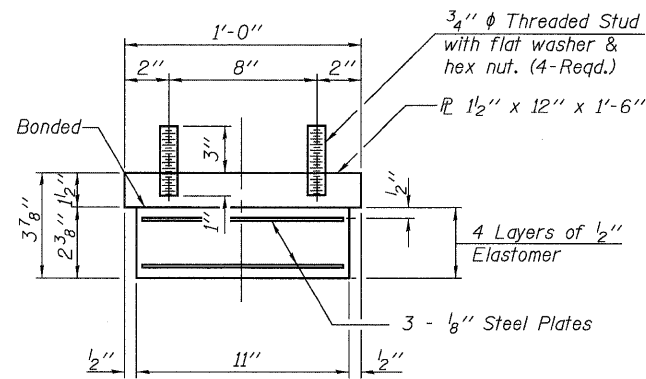


PLAN STEEL EXTENSION - TOP PL



PLAN STEEL EXTENSION - BOTTOM PL

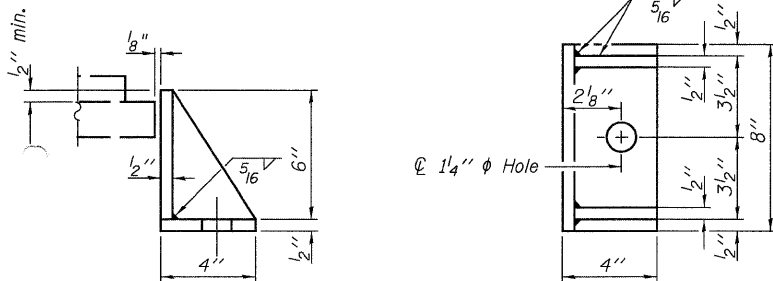
TYPE I ELASTOMERIC EXP. BRG. - PIERS 1 & 3



BEARING ASSEMBLY

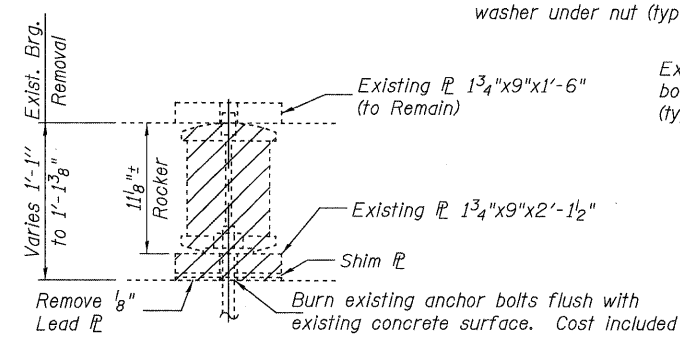
Notes:
Anchor bolts shall be ASTM F1554 all-thread (or an Engineer-approved alternate material) of the grade(s) and diameter(s) specified. ASTM A307 Grade C anchor bolts may be used in lieu of ASTM F1554 Grade 36 (Fy=36ksi). The corresponding specified grade of AASHTO M314 anchor bolts may be used in lieu of ASTM F1554.
Anchor bolts at fixed bearings shall be installed in holes drilled after the supported member is in place.
Anchor bolts for side retainers shall be installed in holes drilled after members are in place.
Drilled and set anchor bolts shall be installed according to Article 521.06 of the Standard Specifications.
Side retainers shall be included in the cost of Elastomeric Bearing Assembly, Type I.

Note:
Shim plates shall not be placed under Bearing Assembly.



SIDE RETAINER

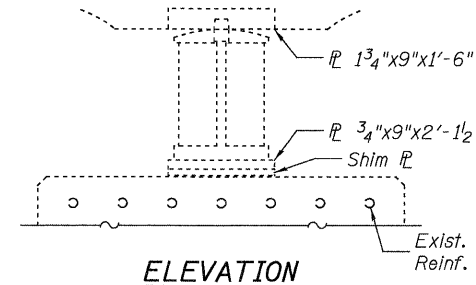
Equivalent rolled angle with stiffeners will be allowed in lieu of welded plates.



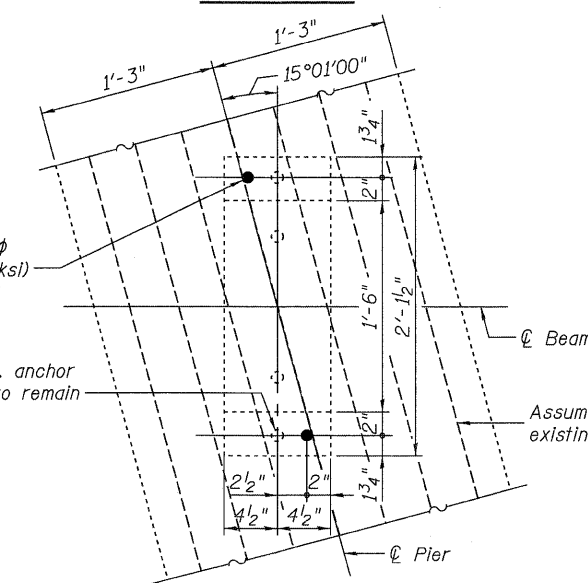
EXISTING BEARING REMOVAL DETAIL - PIERS 1 & 3

SHIM THICKNESS TABLE

Location	Beam 1	Beam 2	Beam 3	Beam 4
Pier 1	-	-	3/8"	-
Pier 2	-	-	-	1/4"
Pier 3	-	1/4"	-	-

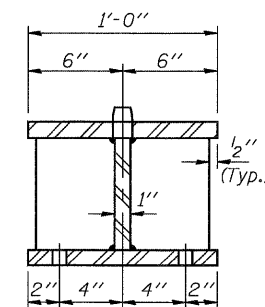


ELEVATION

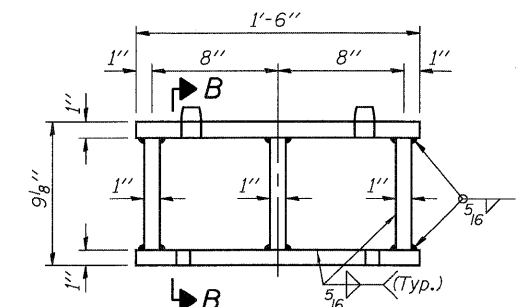


PLAN

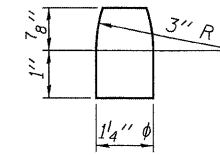
FIXED BEARING RETROFIT - PIER 2



SECTION B-B



ELEVATION STEEL EXTENSION



PINTLE

NOTES:
See Sheet 2 of 3 for additional Notes.

BILL OF MATERIAL

Item	Unit	Total
Jack and Remove Existing Bearings	Each	8
Elastomeric Bearing Assembly Type I	Each	8
Furnishing and Erecting Structural Steel	Pound	1780
Anchor Bolts, 1"	Each	24

BEARINGS - PIERS

PLEASANT RIDGE ROAD (FAU 9115) OVER
F.A.I. ROUTE 70
STRUCTURE NO. 060-0172

INTERIOR GIRDER REACTION TABLE		
		Piers 1 & 3
R (DL)	(K)	83.4
R (LL)	(K)	53.9
R (Imp)	(K)	15.5
R (Total)	(K)	152.8
Minimum Jack Capacity	(Tons)	80

SHEET 3 OF 3	F.A.I. RTE.	SECTION	COUNTY	TOTAL SHEETS	SHEET NO.
	70	60-(8,9,10)BR	MADISON	150	100
	STA. 665+88.58	CONTRACT NO. 76A73			
	FED. ROAD DIST. NO.	ILLINOIS FED. AID PROJECT			

Johnson, Depp & Quisenberry
CONSULTING ENGINEERS
Springfield, Illinois

DESIGNED: JDQ DRAWN: PTR
CHECKED: DCD CHECKED: DCD

I-2E-1 10-1-08 (Modified)

FILE: m:\projects\10166 il-cbvv\11-70 resurfacing\1-en0600172-pleasantridge\0600172-76A73-003-Bearings.dgn
USER: SJS
DATE: 06/11/2009 17:55:58