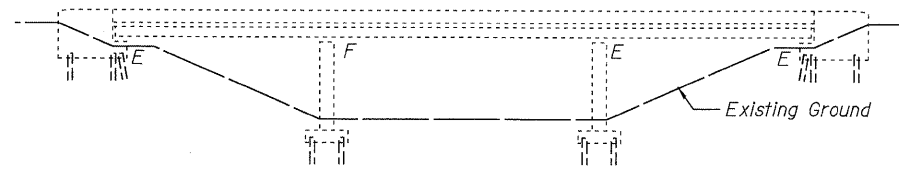
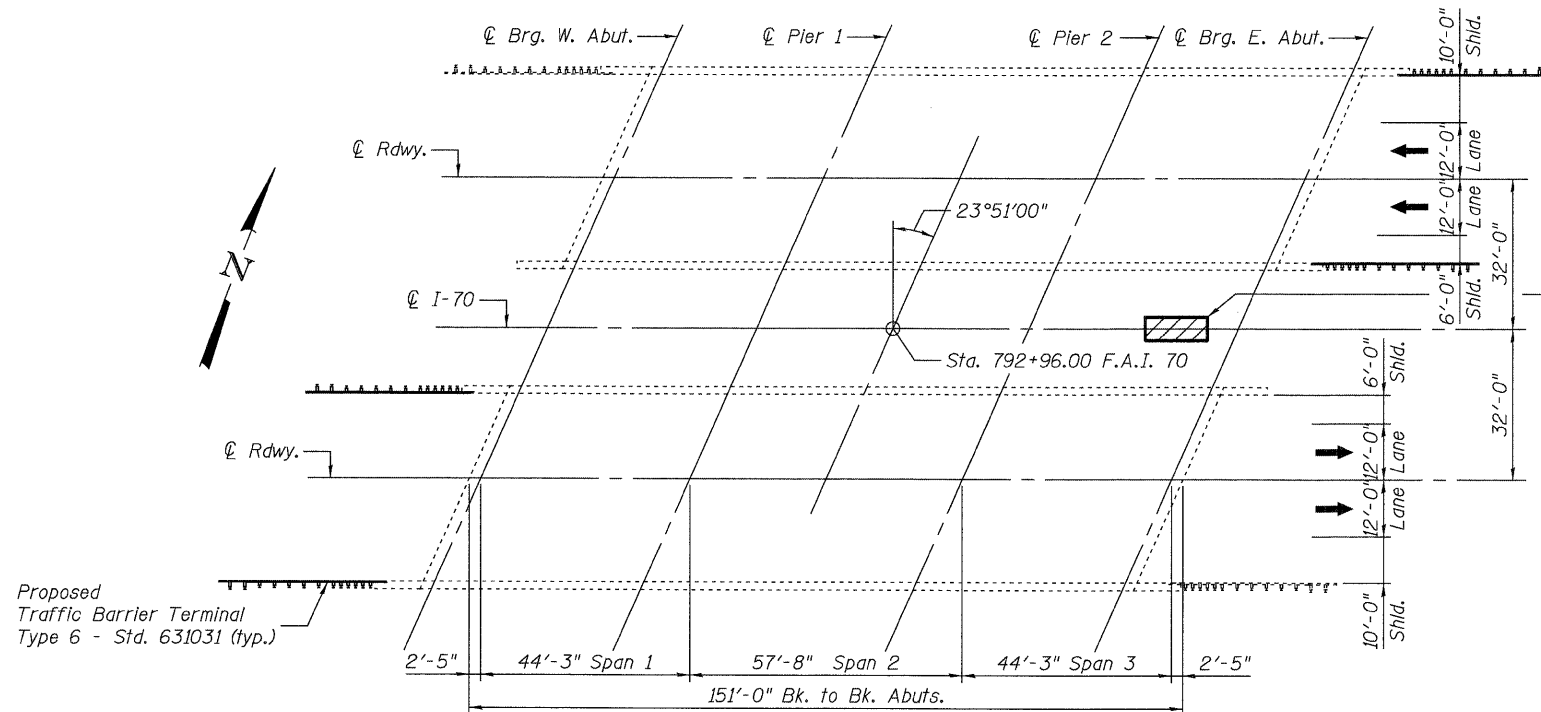


STATE OF ILLINOIS  
DEPARTMENT OF TRANSPORTATION



ELEVATION



PLAN

Backfill undermined slope with Controlled Low-Strength Material. Remove and replace small area(s) of slope for access if required.

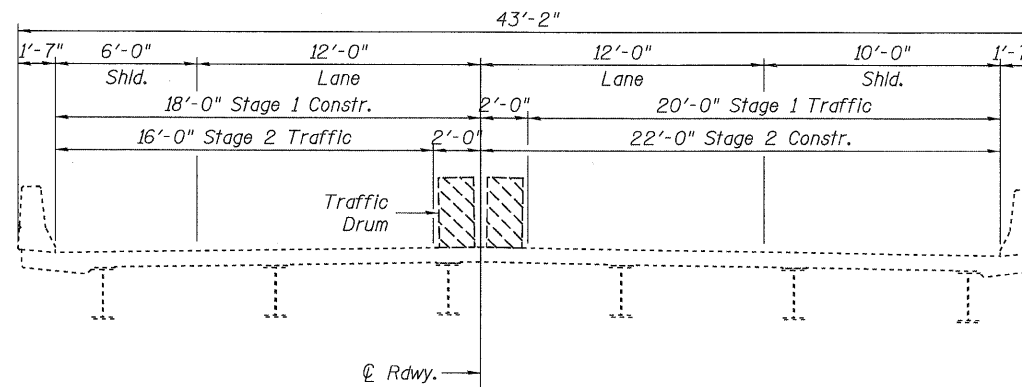
GENERAL NOTES

Concrete Sealer shall be applied to the surfaces of the bridge deck and parapets, including wings. See Special Provision for "BRIDGE DECK CONCRETE SEALER".

Slope wall shall be reinforced with welded wire fabric, 6" x 6" - W4.0 x W4.0, weighing 58 lbs. per 100 sq. ft.

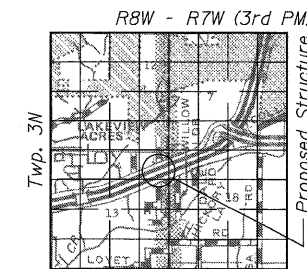
TOTAL BILL OF MATERIAL

ITEM	UNIT	SUPER	SUB	TOTAL
Slope Wall Removal	Sq Yd	--	2	2
Slope Wall 4 Inch	Sq Yd	--	2	2
Concrete Sealer	Sq Ft	14652	--	14652
Bridge Washing No. 3	Each	1	--	1
Bridge Washing No. 4	Each	1	--	1
Controlled Low-Strength Material	Cu Yd	--	6	6



CROSS SECTION  
(Looking with traffic)

Note:  
Staging is for information only, to be coordinated with roadway staging.



LOCATION SKETCH

GENERAL PLAN & ELEVATION  
F.A.I. ROUTE 70 OVER  
WILSON HEIGHTS RD. (TR 192)  
STRUCTURE NO. 060-0018(EB) & 0019(WB)

SHEET 1 OF 1	F.A.I. RTE.	SECTION	COUNTY	TOTAL SHEETS	SHEET NO.
	70	60-(8,9,10)BR	MADISON	150	102
	STA. 792+96.00		CONTRACT NO.	76A73	
FED. ROAD DIST. NO.		ILLINOIS FED. AID PROJECT			

**JD** Johnson, Depp & Quisenberry  
CONSULTING ENGINEERS  
Springfield, Illinois



Signed: *David Depp*  
Date: *6-4-2009*  
Lic. Expires: 11-30-2010

DESIGNED: JDQ	DRAWN: PTR
CHECKED: DCD	CHECKED: DCD

DATE: 06/11/2009 17:21:44 USER: SJ5 FILE: M:\projects\10166 IL-DBV\1-1-70 Resurfacing\3-SN060008-0019-WilsonRd\060008-76A73-01-gplan.dgn