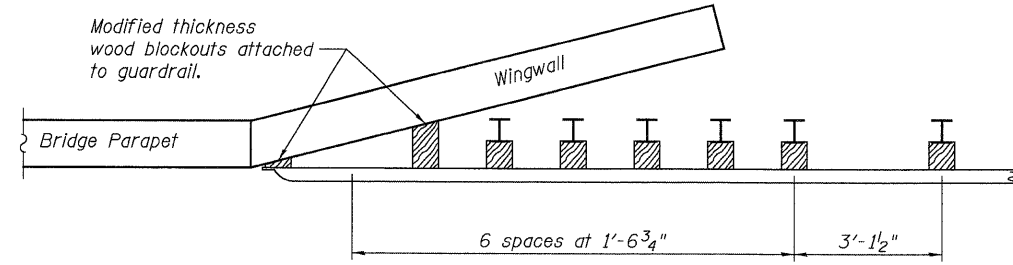
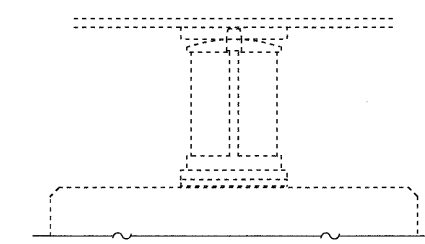


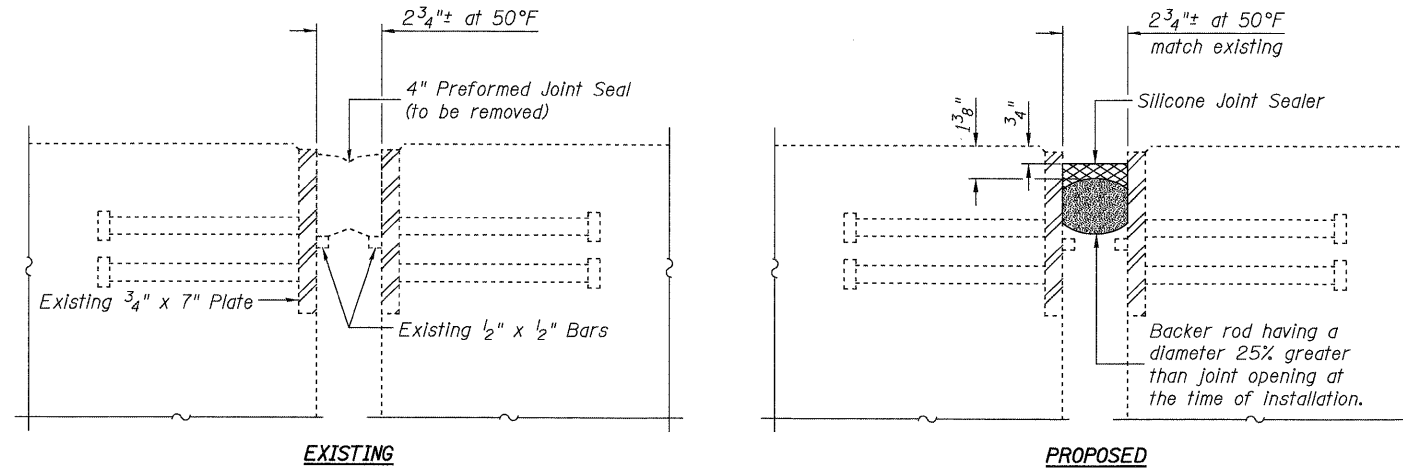
STATE OF ILLINOIS
DEPARTMENT OF TRANSPORTATION



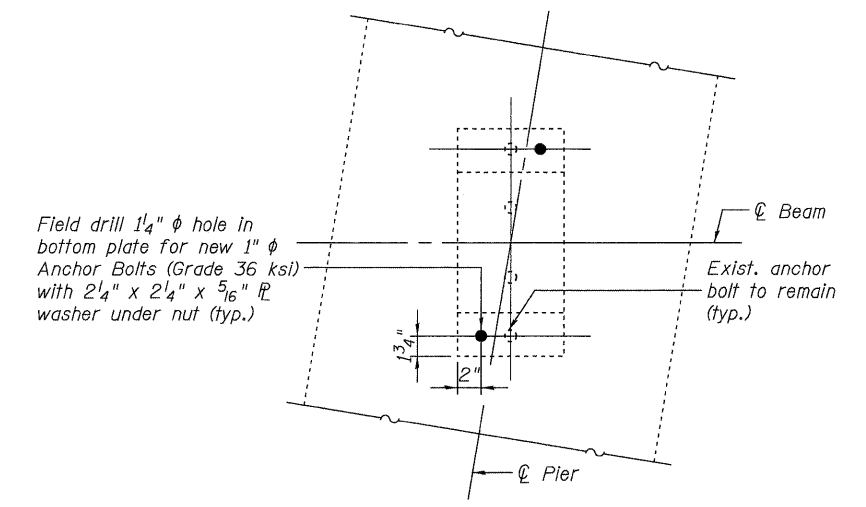
**TRAFFIC BARRIER TERMINAL
TYPE 6 (SPECIAL)**



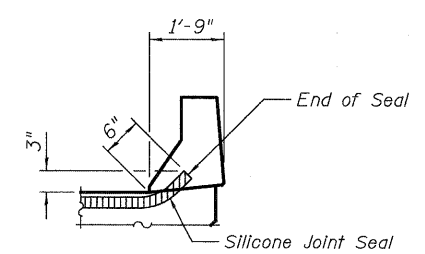
ELEVATION



**SECTION THRU EXPANSION JOINT
EAST & WEST ABUTMENT**



**PLAN
FIXED BEARING RETROFIT - PIER 2**



**TYPICAL END OF SEAL TREATMENT
AT EXPANSION JOINT**

JD Johnson, Depp & Quisenberry
CONSULTING ENGINEERS
Springfield, Illinois

DESIGNED: JDQ	DRAWN: PTR
CHECKED: DCD	CHECKED: DCD

SUPERSTRUCTURE DETAILS
F.A.I. ROUTE 270 OVER
F.A.I. ROUTE 55
STRUCTURE NO. 060-0057(EB) & 0058(WB)

SHEET 2 OF 2	F.A.I. RTE.	SECTION	COUNTY	TOTAL SHEETS	SHEET NO.
	70	60-(8,9,10)BR	MADISON	150	108
	STA. 1278+43.63 (1-55)		CONTRACT NO. 76A73		
FED. ROAD DIST. NO. ILLINOIS FED. AID PROJECT					

FILE: m:\projects\10166 il-d8v\11-70 resurfacing\6-sf0600057-0058-1270 0600057-76A73-02-super-str.dgn
USER: SJ5
DATE: 06/11/2009 17:29:07