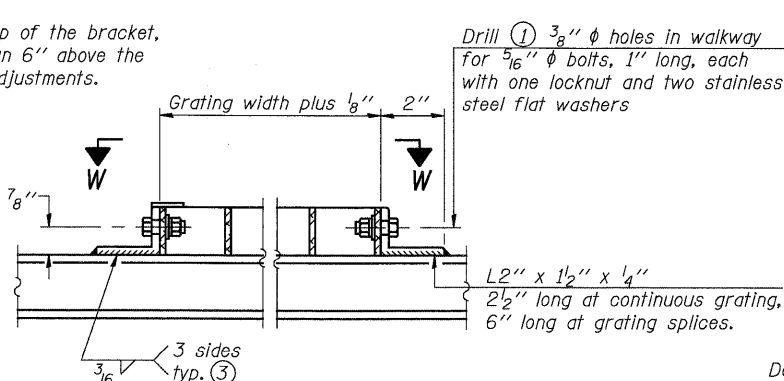
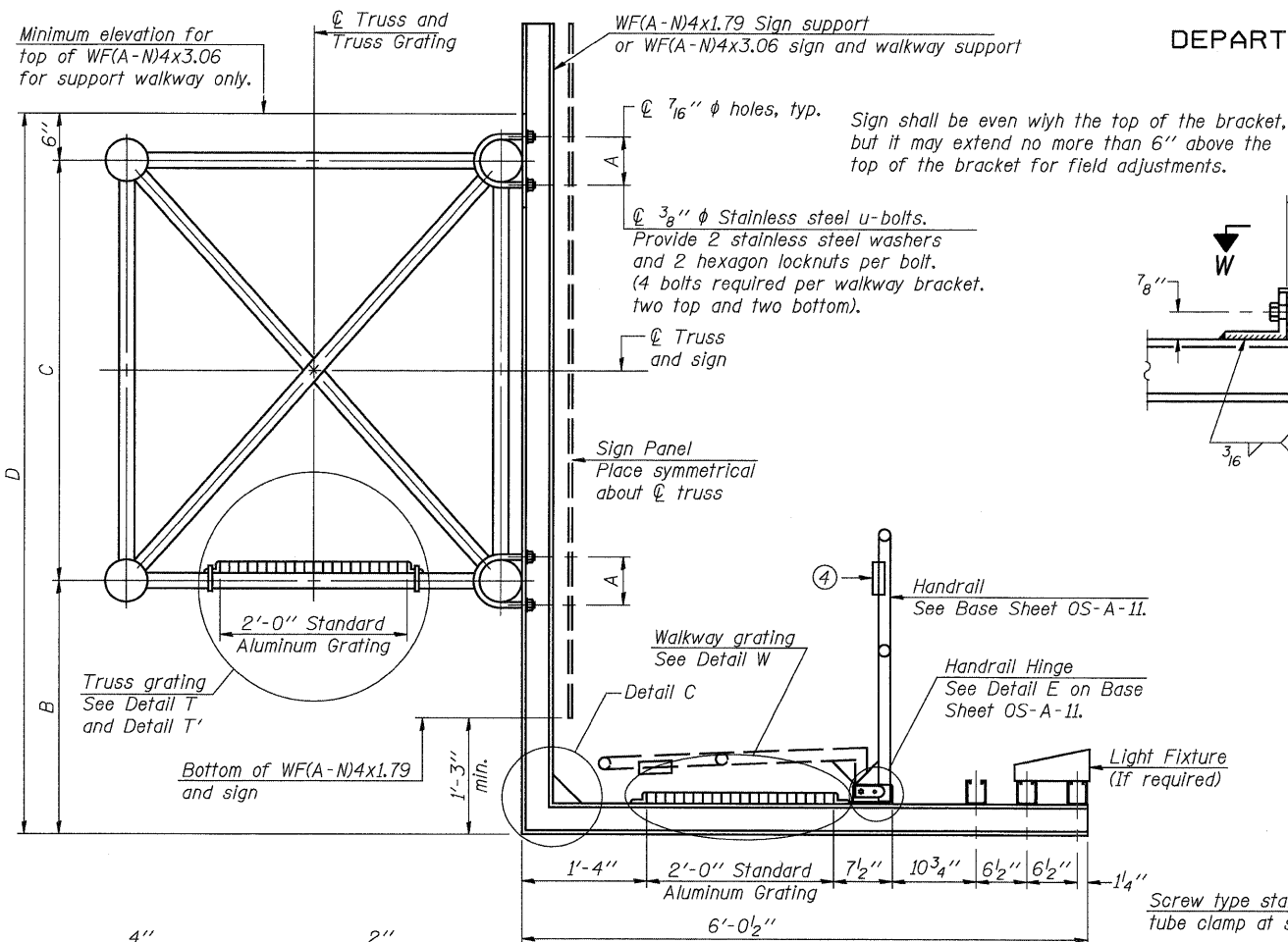
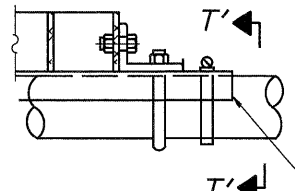


STATE OF ILLINOIS
DEPARTMENT OF TRANSPORTATION

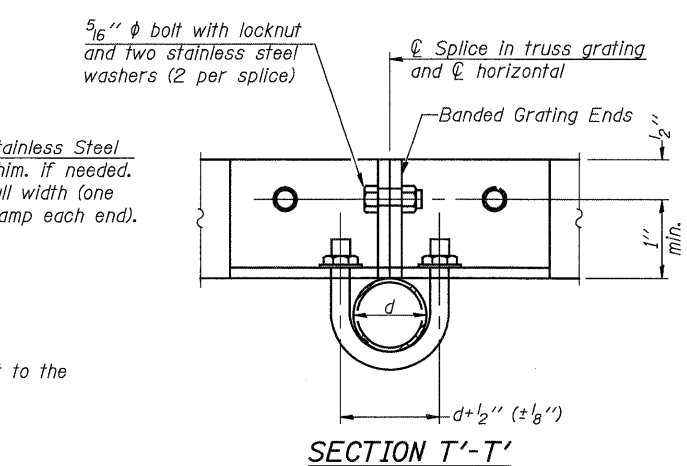


DETAIL W
(Walkway grating)

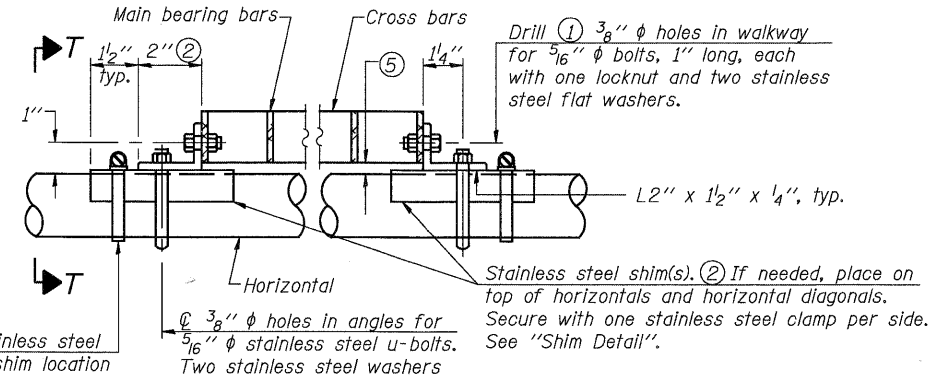


DETAIL T'

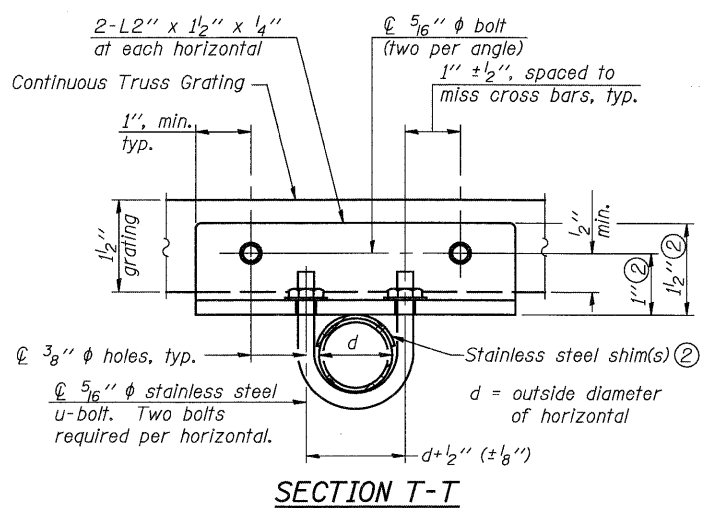
(Truss grating splice)
Details not shown same as Detail T. Alternate materials may be used subject to the Engineer's review and approval.



SECTION T'-T'



DETAIL T
(Continuous Truss grating)



SECTION T-T

SPECIFICATIONS FOR STANDARD ALUMINUM GRATING

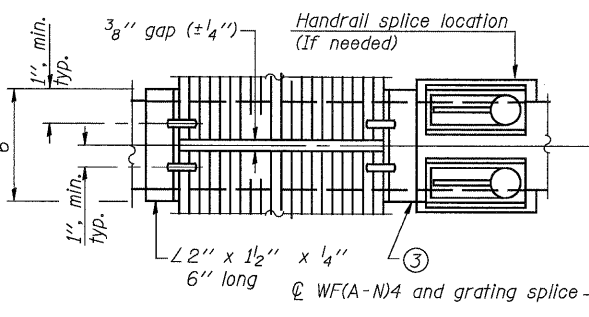
Main Bearing Bars shall be 3/16" x 1 1/2" on 1 3/16" centers and conform to ASTM B221 Alloy 6061-T6.
Cross bars shall be 3/16" x 1 1/2" on 4" centers and conform to ASTM B221 Alloy 6063-T5 or 6061-T6.

OR

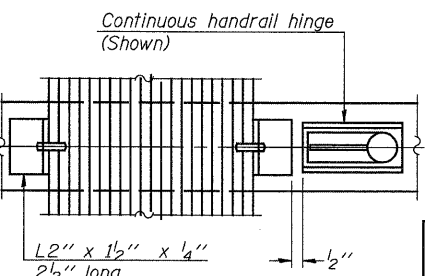
Aluminum Grating with modified "4" sections for main bearing bars shall meet the following requirements:
Main bars shall conform to ASTM B221 Alloy 6061-T6 and have a minimum section modulus equal to 0.0705 in.³ per bar, a depth of 1 1/2", spaced on 1 3/16" centers.
Cross bars shall conform to ASTM B221 Alloy 6063-T5 or T-42 and spaced on 4" centers.

Structure Number	Station	A	⑥ B	C	⑥ D
8S060I055R016.4	803+00	6"	5'-4 1/2"	5'-3"	11'-1 1/2"
8S060I055R017.8	1363+75	5 1/2"	5'-0"	4'-6"	10'-0"

SECTION B-B

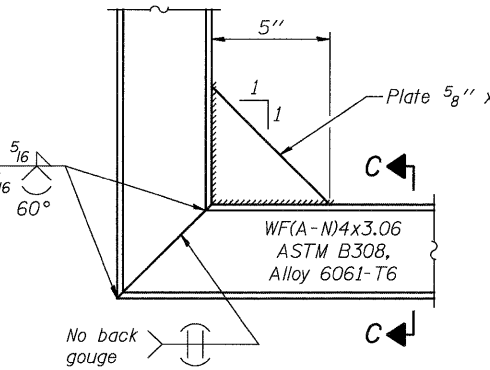
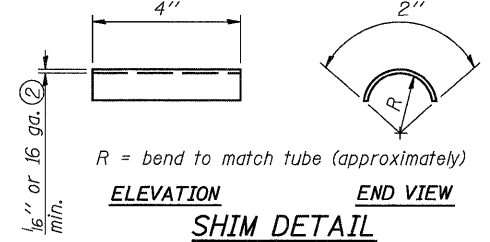
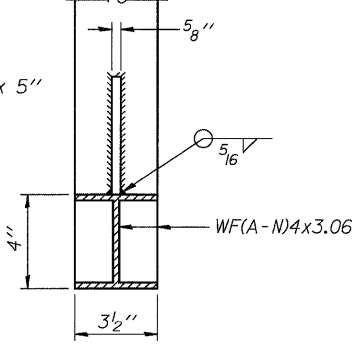


(AT WALKWAY GRATING SPLICE)



SECTION W-W
(CONTINUOUS WALKWAY GRATING)

SECTION C-C



- ① Drilling holes in grating may be done in shop or field, based on Contractor's preference and subject to accurate alignment.
- ② Stainless steel shims shall be placed as shown in Detail T if needed to compensate for alignment variations between horizontal and diagonal pipes beyond adjustment provided by angles. Thicker shims may be used subject to shims performing properly.
- ③ If Handrail Joint present, weld angle to WF(A-N)4 and 1/4" extension bars. (See Base Sheet OS-A-11.)
- ④ 1/8" x 1/2" x 2" welded to handrail posts to protect locations that contact grating.
- ⑤ Tube to grating gap may vary from 0 to 1/2", max. to align walkway, allow for camber, etc.
- ⑥ Based on actual height of tallest sign given on OS-A-1.

JD Johnson, Depp & Quisenberry
CONSULTING ENGINEERS
Springfield, Illinois

DESIGNED: JDQ DRAWN: SJS/PTR
CHECKED: DCD CHECKED: DCD

OS-A-10 6-1-09

NUMBER	REVISION	DATE

OVERHEAD SIGN STRUCTURES
ALUMINUM WALKWAY DETAILS

SHEET 8 OF 11	F.A.I. RTE. 70	SECTION 60-18,9,10BR	COUNTY MADISON	TOTAL SHEETS 150	SHEET NO. 116
	FED. ROAD DIST. NO. ILLINOIS FED. AID PROJECT			CONTRACT NO. 76A73	

FILE: M:\projects\10166_IL-DBV\11-70_Resurfacing\7-SignStructures\SignStructures-76173-00-signtruss-spn.dgn
USER: SJS
DATE: 06/11/2009 16:45:38