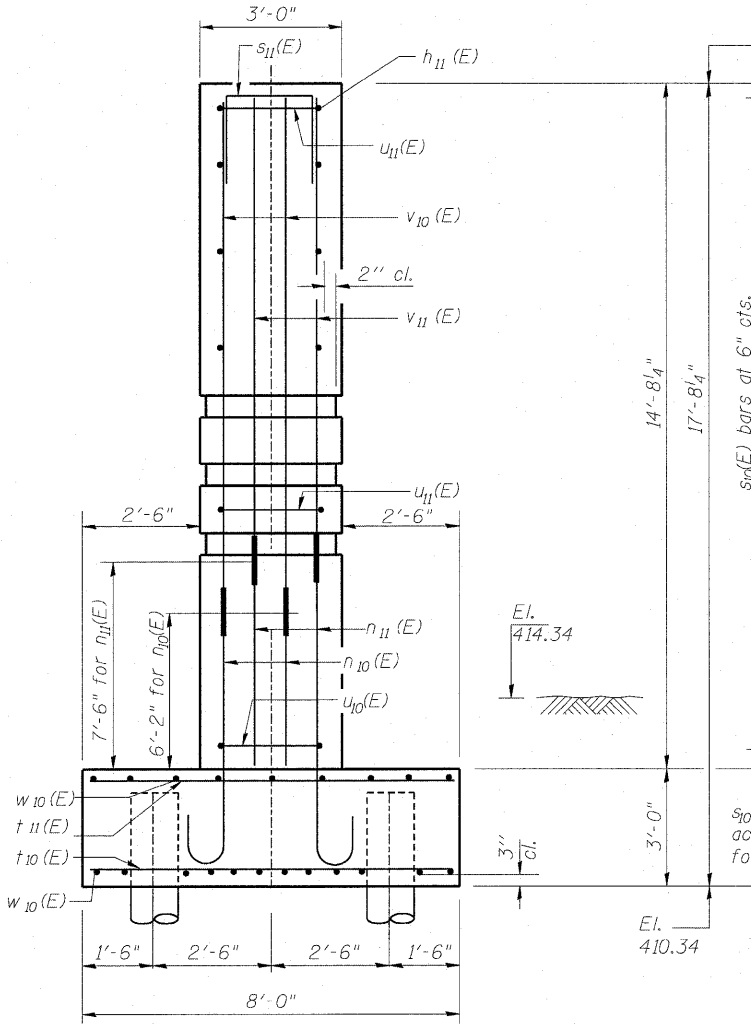
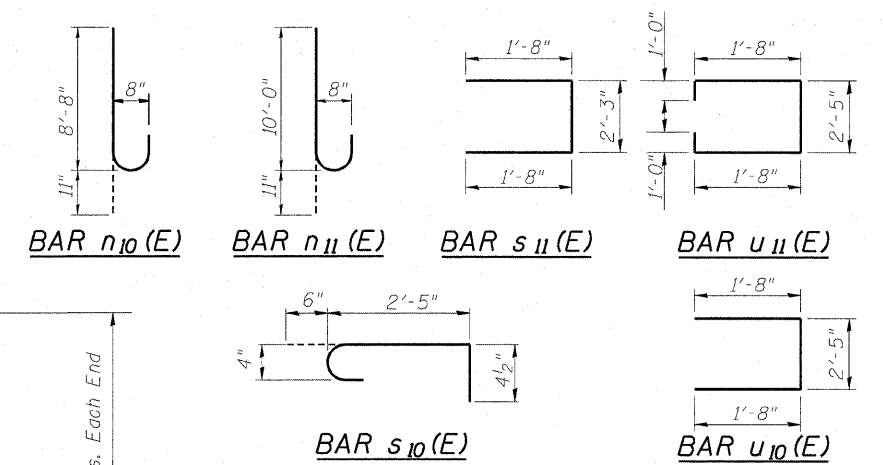
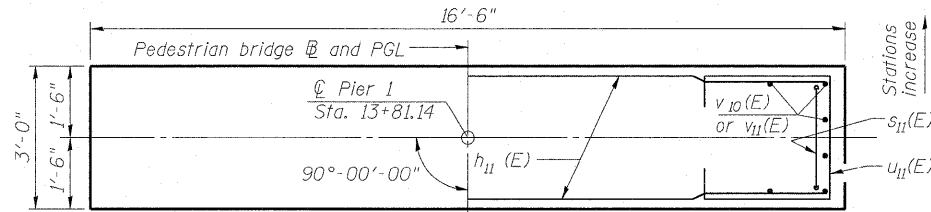
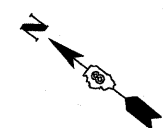


PILE DATA - PIER 1

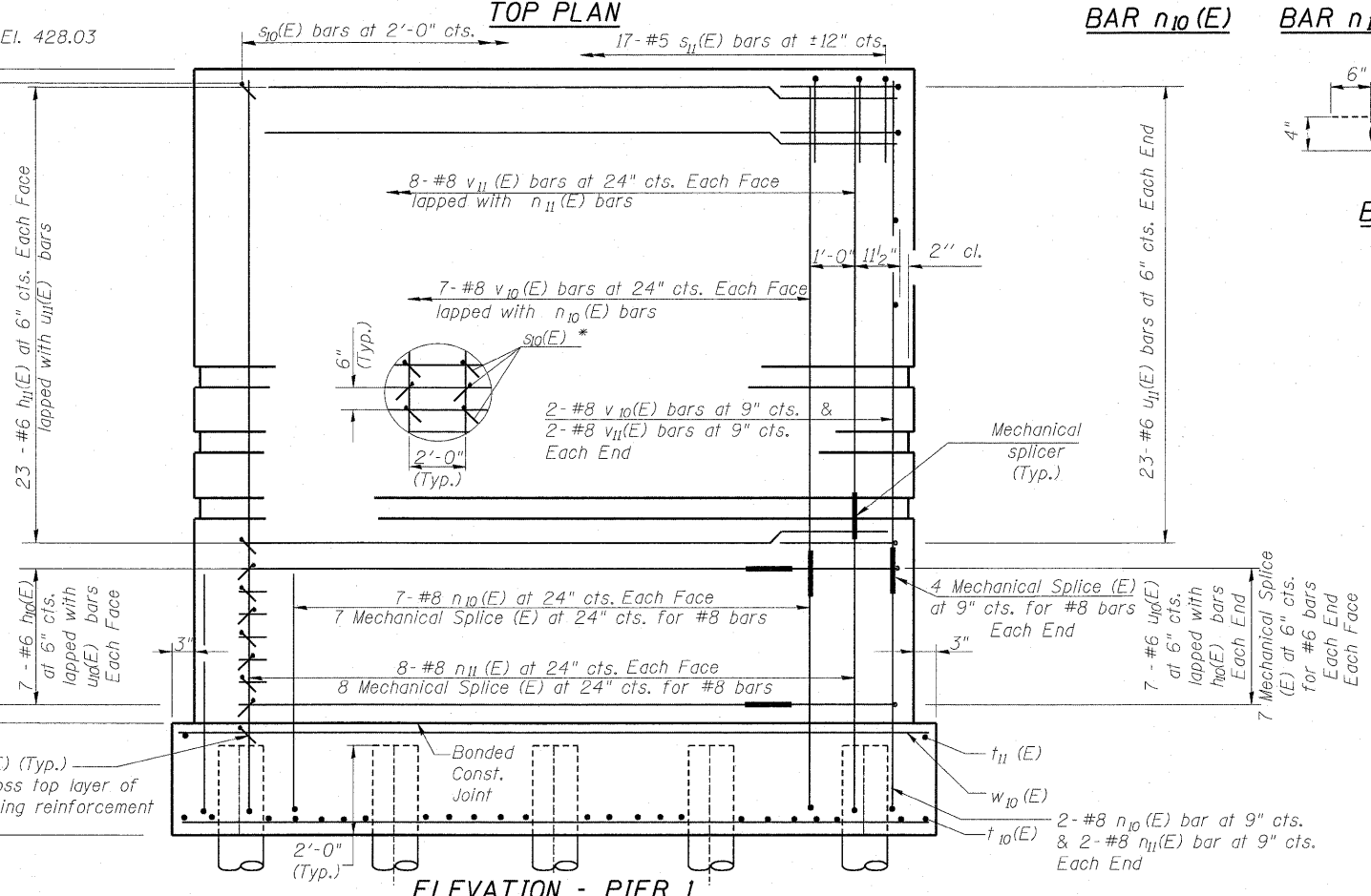
Type: Metal Shell 12" dia. x 1/4" wall with Pile Shoes
 Nominal Required Bearing: 330 kips
 Allowable Resistance Available: 110 kips
 Estimated Pile Length: 60 ft
 Number of Production Piles: 10
 Number of Test Piles: 0



END VIEW

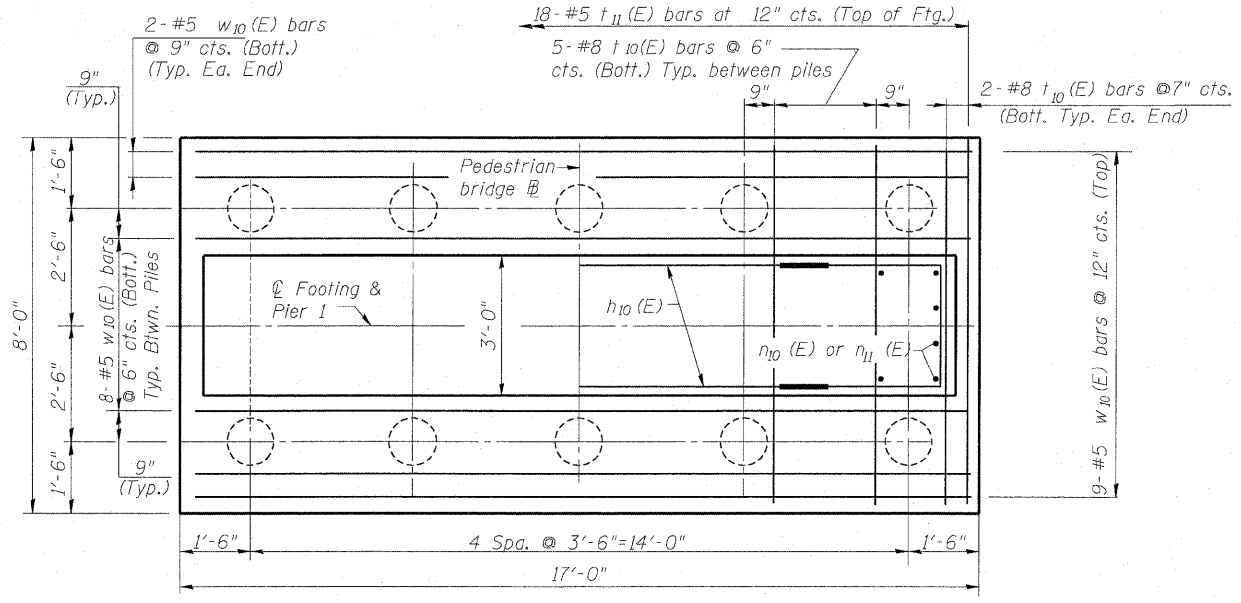
N.T.S.

* Arrange s10(E) bars in a grid pattern at intersection of n10(E) or n11(E) or v10(E) or v11(E) and h10(E) or h11(E) or u10(E) or u11(E). Orientation of 180° hook shall also be alternate.



ELEVATION - PIER 1

(Looking East)
N.T.S.



FOOTING PLAN

N.T.S.

BILL OF MATERIAL

Bar	No.	Size	Length	Shape
h10(E)	14	#6	12'- 7"	—
h11(E)	46	#6	15'- 11"	—
n10(E)	18	#8	9'- 7"	U
n11(E)	20	#8	10'- 11"	U
s10(E)	248	#4	3'- 3 1/2"	L
s11(E)	17	#5	5'- 7"	U
t10(E)	24	#8	7'- 8"	—
t11(E)	18	#5	7'- 8"	—
u10(E)	14	#6	5'- 9"	U
u11(E)	46	#6	7'- 9"	U
v10(E)	18	#8	8'- 4"	—
v11(E)	20	#8	7'- 0"	—
w10(E)	21	#5	16'- 8"	—
Structure Excavation		Cu. Yd.	37.3	
Concrete Structures		Cu. Yd.	42	
Reinforcement Bars, Epoxy Coated		Pound	5,490	
Furnishing Metal Pile Shells 12" x 0.250"		Foot	620	
Driving Piles		Foot	600	
Pile Shoes		Each	10	
Concrete Sealer		Sq. Ft.	50	
Mechanical Sandblast Finish		Sq. Ft.	390	
Concrete Surface Color Treatment		Sq. Ft.	66	
Mechanical Splice		Each	66	

NOTES:

- All edges shall have standard 3/4" chamfers except as noted.
- Space reinforcement in cap to miss anchor bolts.
- For Anchor bolt details see Sheet PB-5. Truss fabricator shall determine size & location of anchor bolts. Cost included with Pedestrian Truss Superstructure.
- See Sheet PB-18 for urban design guideline.