

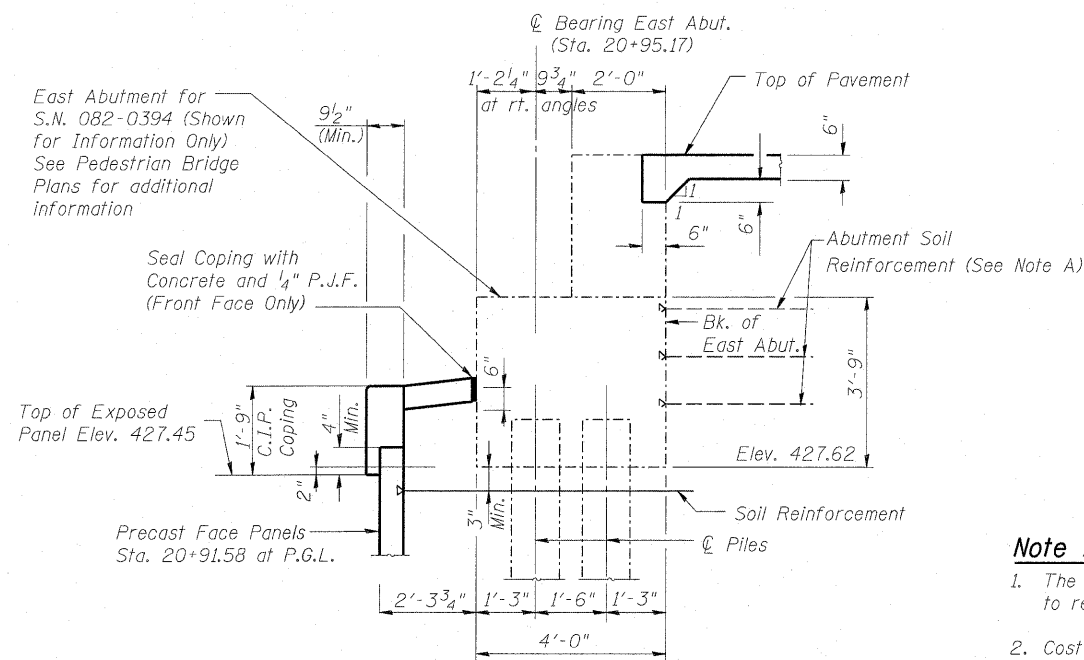
TYPICAL M.S.E. WALL SECTION

GENERAL NOTES

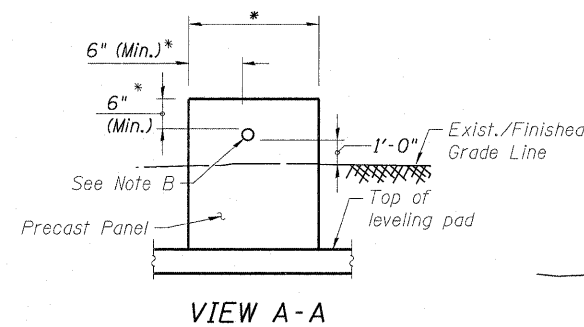
1. Reinforcement bars shall conform to the requirements of ASTM A 706 Gr 60. See Special Provisions.
2. All construction joints shall be bonded.
3. See Special Provision for Mechanically Stabilized Earth Retaining Wall design and construction requirements.
4. Apply Bush Hammer Surface Texture to front face of all MSE wall panels. See special provision for Architectural Form Liner Finish.
5. Protective Coat shall be applied to the entire top surface of the ramp pavement and the top and inside vertical faces of curb.
6. For Aggregate Column Ground Improvement Detail See Sheet EA-12.
7. See Civil Drawings for Drainage Details.

TOTAL BILL OF MATERIAL

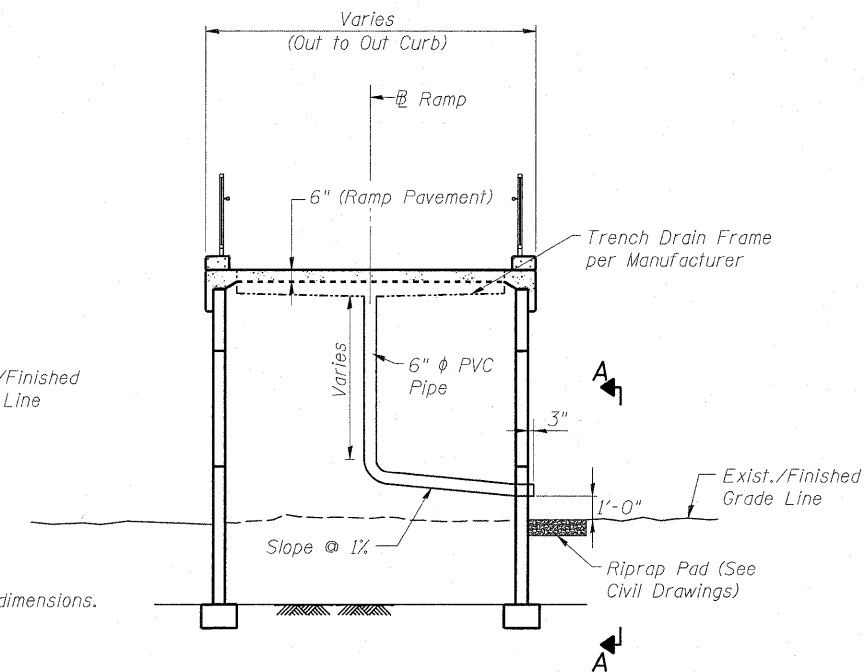
ITEM	UNIT	TOTAL
Structure Excavation	Cu. Yd.	684.6
Concrete Superstructure	Cu. Yd.	121.2
Reinforcement Bars, Epoxy Coated	Pound	15,110
Pedestrian Railing	Foot	84
Pedestrian Rail (Special)	Foot	505
Protective Coat	Sq. Yd.	500
Mechanically Stabilized Earth Retaining Wall	Sq. Ft.	7,432
Aggregate Column Ground Improvement	Sq. Ft.	3,740



SECTION THRU ABUTMENT



VIEW A-A
* Wall supplier to determine required dimensions.



TYPICAL SECTION AT TRENCH DRAIN DETAIL
(Looking East)

Note A

1. The MSE Wall supplier to design the abutment soil reinforcement to resist a horizontal force of 2.40 kips/ft of abutment.
2. Cost of abutment soil reinforcement shall be included with "Mechanically Stabilized Earth Retaining Wall". Contractor shall be responsible for coordination of work between MSE ramp wall and the pedestrian bridge abutment.

Note B

1. Wall supplier to provide opening in the precast panels for 6" φ PVC pipe. Wrap pipe at panel opening with 1/2" P.J.F. Cost shall be included with "Mechanically Stabilized Earth Retaining Wall".
2. See Civil Drawings for Trench Drain outlet locations and details.

FILE NAME = 082-W229-76C47_S02_CN-01.dgn	USER NAME = bhotta	DESIGNED - DEV	REVISED -	STATE OF ILLINOIS DEPARTMENT OF TRANSPORTATION	GENERAL NOTES, BILL OF MATERIAL & WALL SECTION STRUCTURE NO. 082-W229	F.A. RTE. 64	SECTION 82-1-1HBR	COUNTY ST. CLAIR	TOTAL SHEETS 93	SHEET NO. 80
PLOT SCALE = 0.1" = 1' / IN.	CHECKED - ATB	DATE - 05/01/09	REVISED -			CONTRACT NO. 76C47				
PLOT DATE = 6/15/2009	DATE - 05/01/09	REVISED -	SCALE:			SHEET NO. OF SHEETS	STA. TO STA.	FED. ROAD DIST. NO.	ILLINOIS	FED. AID PROJECT