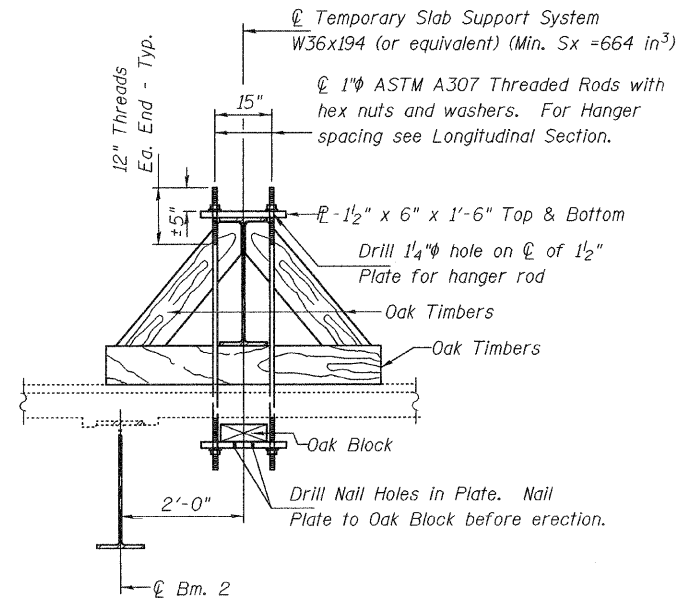
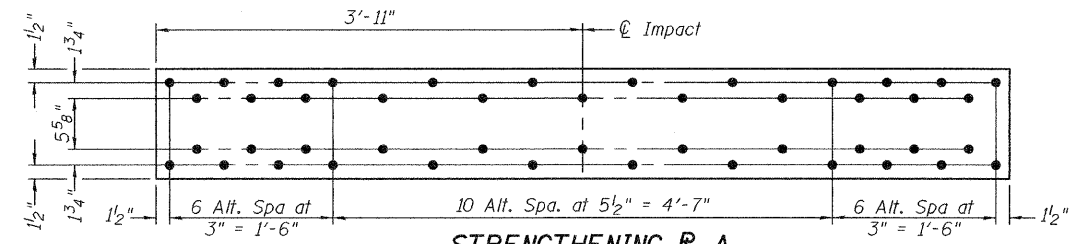


STATE OF ILLINOIS  
DEPARTMENT OF TRANSPORTATION

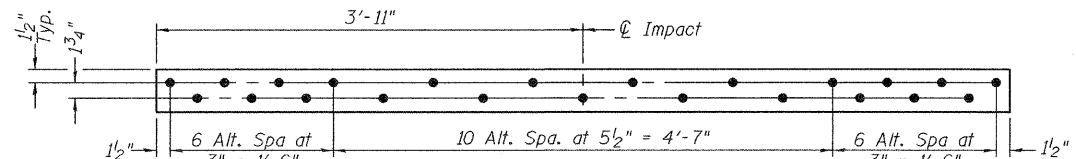


**SECTION A-A**  
(Looking East)  
(Beam 3 Opposite Hand)

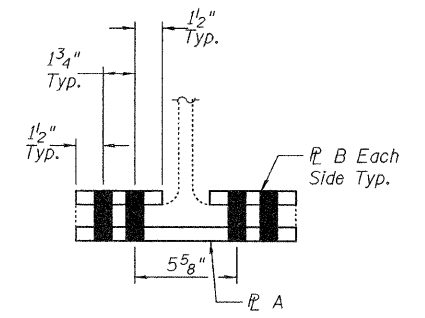
If work on adjacent beam is to be done simultaneously, each beam line will be required to have it's own Temporary Slab Support System.



**STRENGTHENING P A**  
# 3/4" x 1'-0 1/8" x 7'-10" (N.T.R.)  
(3 Req'd)

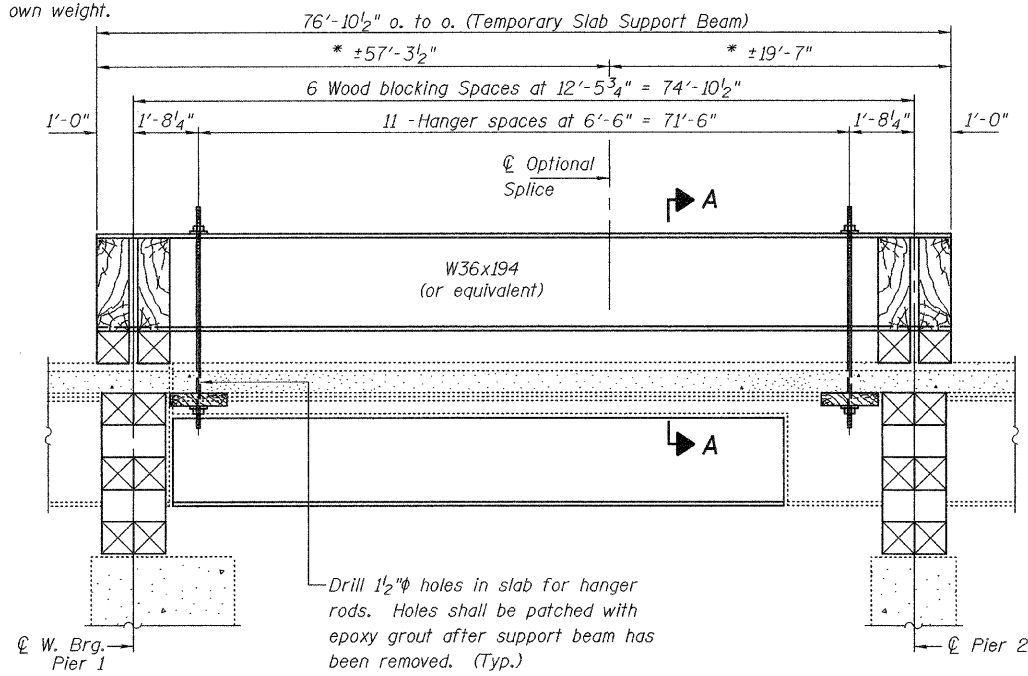


**STRENGTHENING P B**  
# 3/4" x 4 3/4" x 7'-10" (N.T.R.)  
(6 Req'd)

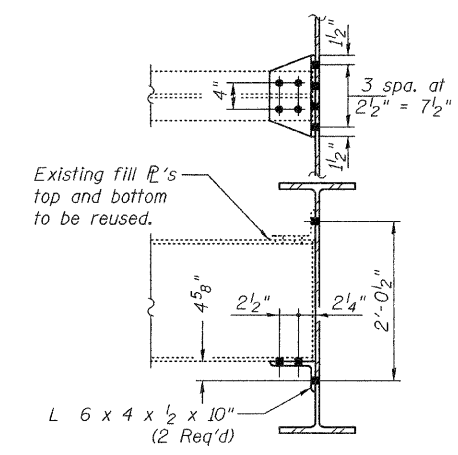


**REPAIR B**  
**STRENGTHENING SECTION**  
(1/8" H.S. bolts in 1/16" holes)

\* These dimensions may vary for available beams in stock.  
\*\* Timber blocking is to be installed after support beam is allowed to deflect under its own weight.



**LONGITUDINAL SECTION**  
**SUGGESTED TEMPORARY SLAB SUPPORT SYSTEM**



**REPAIR D**  
**CLIP L REPLACEMENT**

DESIGNED	A.J.B.
CHECKED	A.T.H.
DRAWN	Drew Christopher
CHECKED	A.J.B. A.T.H.

EXAMINED	July 27, 2009
PASSED	Carl Prosser ENGINEER OF STRUCTURAL SERVICES
	Ralph E. Anderson ENGINEER OF BRIDGES AND STRUCTURES

REP-2 1-27-2000

**DETAILS**  
**SN 060-0039**

SHEET NO. 3	F.A.I. RTE.	SECTION	COUNTY	TOTAL SHEETS	SHEET NO.
	270	60-2HB-I-HDF-2	Madison	8	7
4 SHEETS	FED. ROAD DIST. NO.		ILLINOIS	CONTRACT NO. 76C95	
		FED. AID PROJECT			