

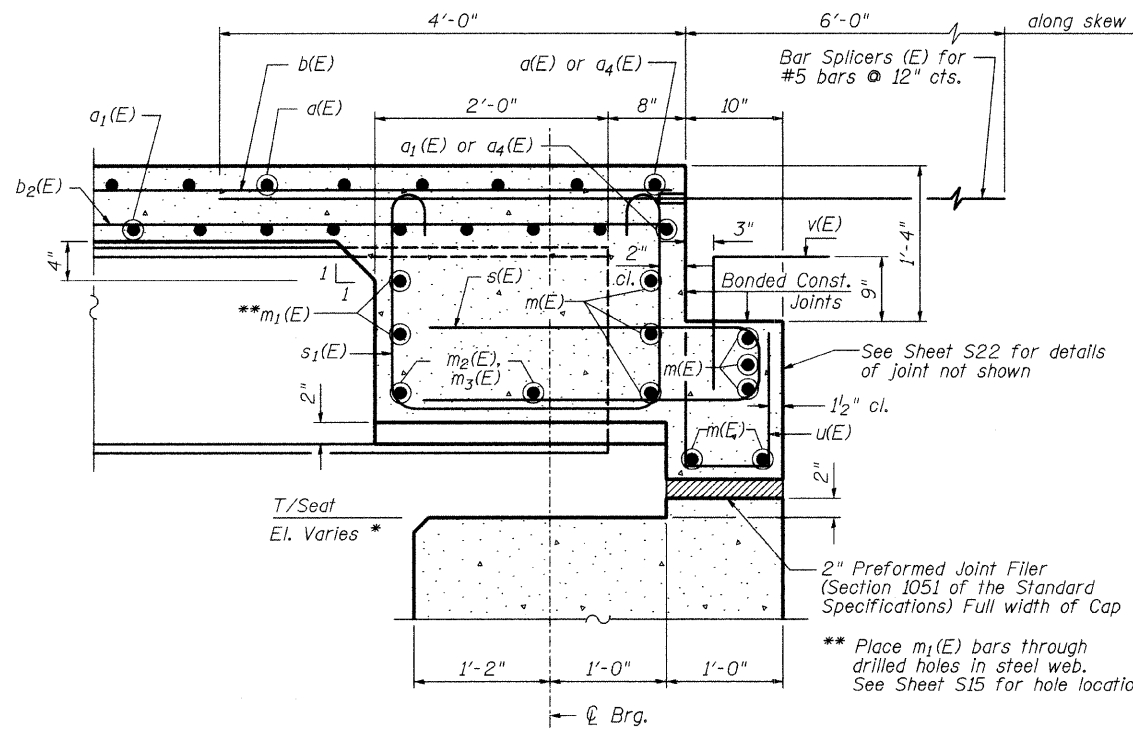
STATE OF ILLINOIS
DEPARTMENT OF TRANSPORTATION

CONTRACT NO. 83827

ROUTE NO.	SECTION	COUNTY	TOTAL SHEETS	SHEET NO.
*	DUPAGE		106	30

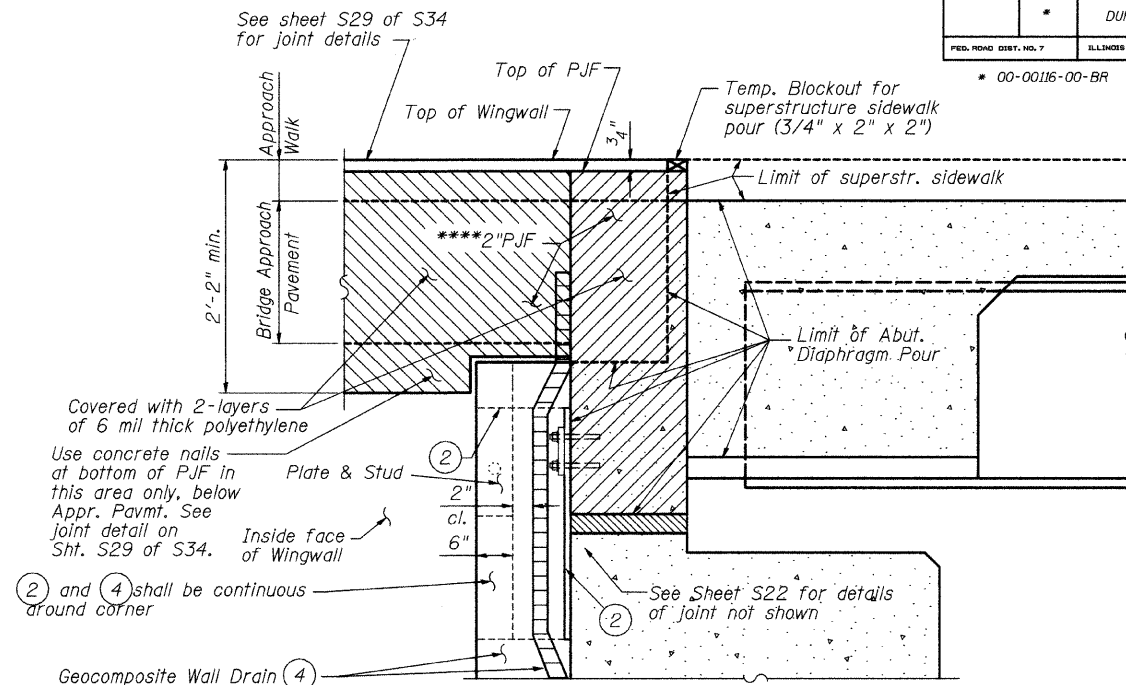
FED. ROAD DIST. NO. 7 ILLINOIS FED. AID PROJECT-
* 00-00116-00-BR

SHEET NO. S9
of S34 SHEETS



SECTION A-A

(Dim. at Rt. L's except as noted)
* See Abutments for Bearing Seat Elevations



- ② Fabric Reinforced Elastomeric Mat
- ③ Not Used
- ④ Geocomposite Wall Drain

SECTION B-B

*** Provide items ② & ④ as shown on Abutment Details sheet behind 2" P.J.F. See Section B-B and Sheet S22. Cost included with Concrete Superstructure.

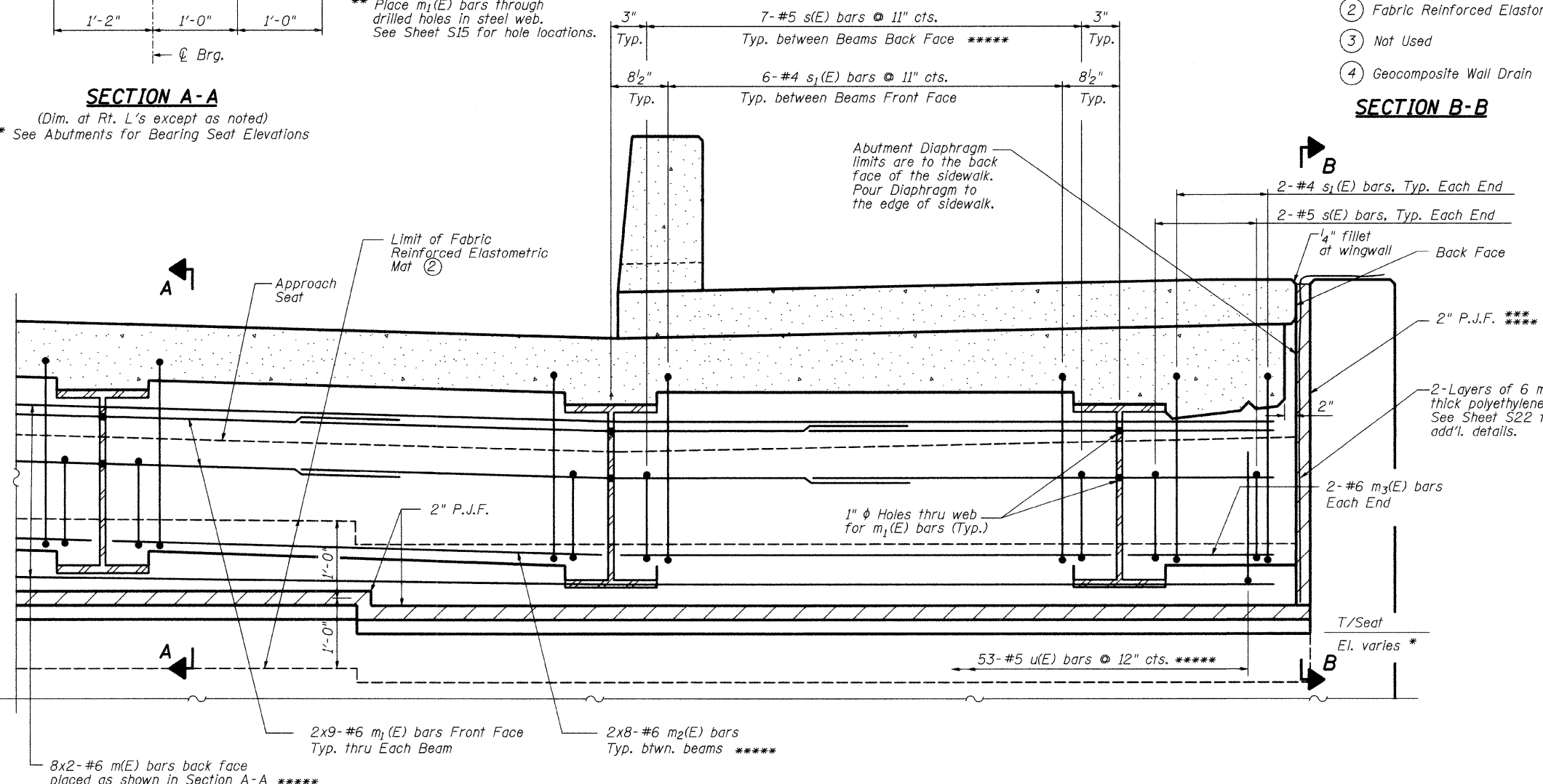
**** 2" Preformed Joint Filler. Polyurethane Bonded Recycled Rubber conforming with the requirements of AASHTO M 153, Type IV.

Attach all layers of P.J.F. with adhesive, fasteners not allowed, except as noted. Adhesive shall be supplied and/or approved by the P.J.F. manufacturer. Face of P.J.F. shall be true and flat, depressions or gaps shall be filled flush with face of P.J.F. with an approved patching material.

***** Omit m2(E) bars between beams 1 and 2. Cut to fit m(E) bars in back face (2 total) which interfere with electric ducts. Arrange s(E) and u(E) bars between beams 1 and 2 as shown in Abutment Diaphragm Elevation-North End and Section C-C, sheet S10 of S34.

Notes: Reinforcement bars in diaphragm are billed with superstructure on sheet S11 of S34.
Concrete in diaphragm is included with Concrete Superstructure on sheet S11 of S34.
For details of bars s(E) & s1(E) see sheet S11 of S34.
The s(E) and s1(E) bars shall be placed parallel to the beams. Spacing for these bars shall be at right angles to the beams.

MIN. BAR LAP
#6 bar = 2'-9"



ABUTMENT DIAPHRAGM ELEVATION - SOUTH END

(Bearings and Bars Billed on Superstructure Plan not shown for clarity)
* See Abutments for Bearing Seat Elevations

ABUTMENT DIAPHRAGM - TYPICAL

JEFFERSON AVENUE OVER
WEST BRANCH DUPAGE RIVER
FAU 3570 SECTION 00-00116-00-BR
DUPAGE COUNTY
STA. 7+64.45
STRUCTURE NUMBER 022-6756

DESIGNED	SRT
CHECKED	JJI
DRAWN	GM
CHECKED	JJI

B Bollinger, Leach & Associates, Inc.