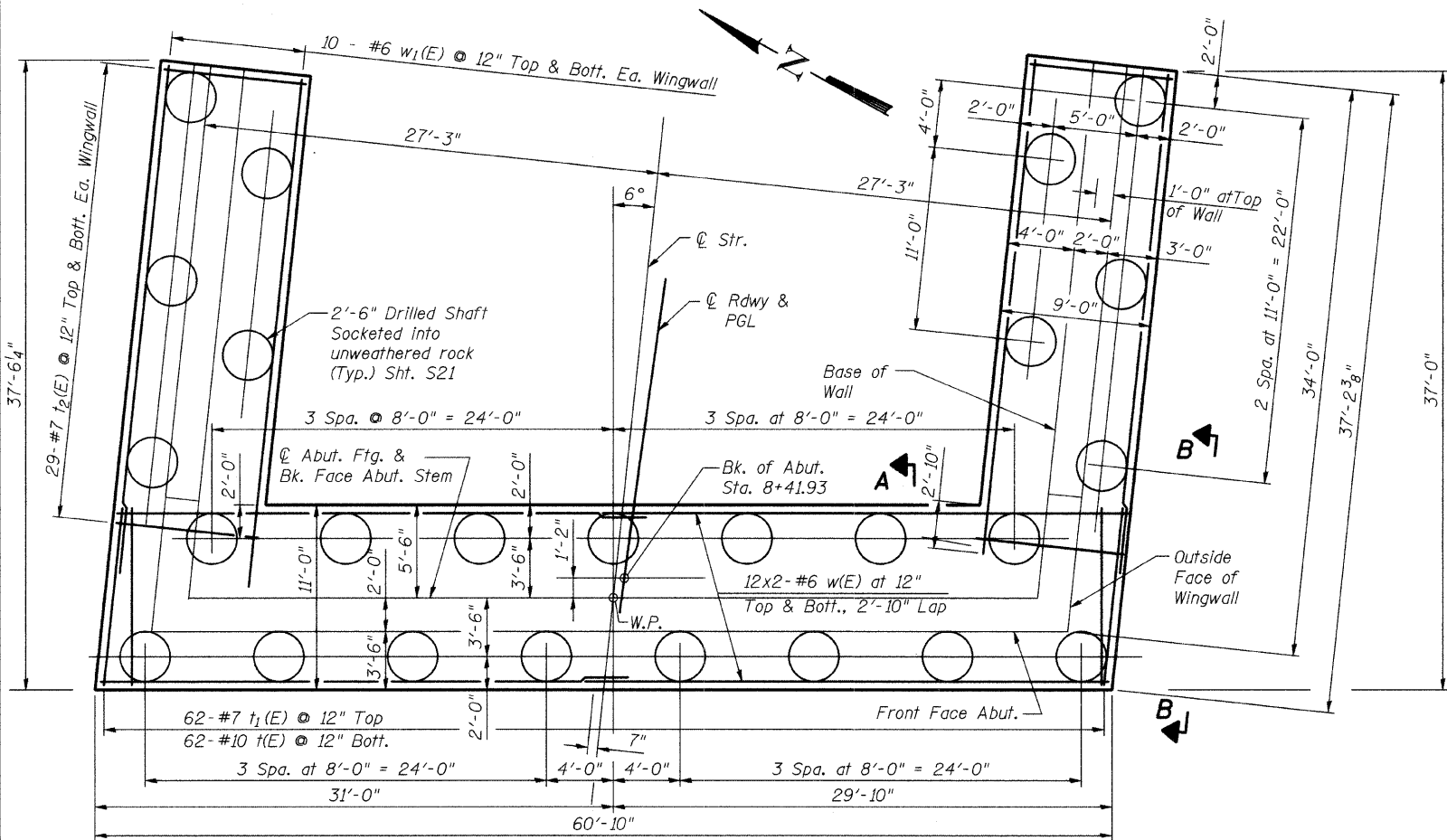
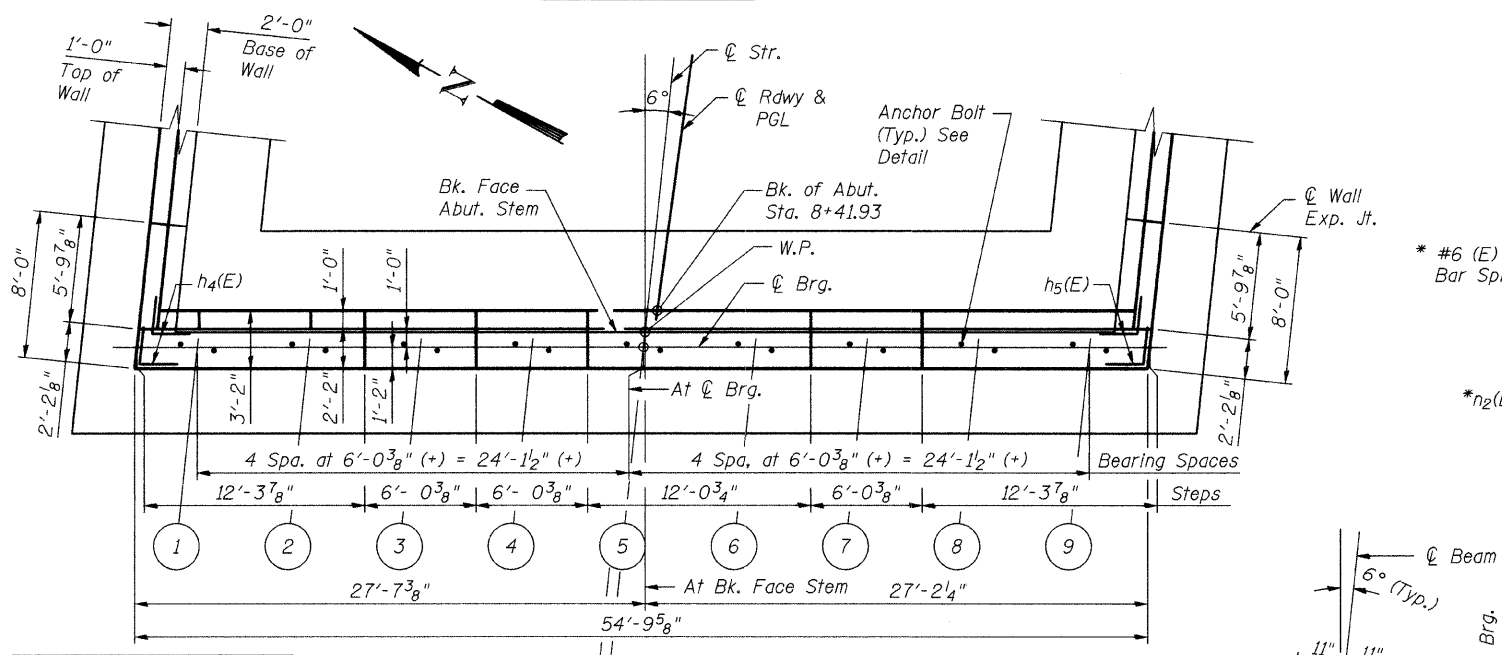


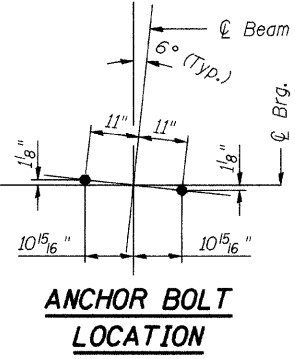
ROUTE NO.	SECTION	COUNTY	TOTAL SHEETS	SHEET NO.
*	DUPAGE	106	41	SHEET NO. S20
of 534 SHEETS				
FED. ROAD DIST. NO. 7	ILLINOIS	FED. AID PROJECT-		



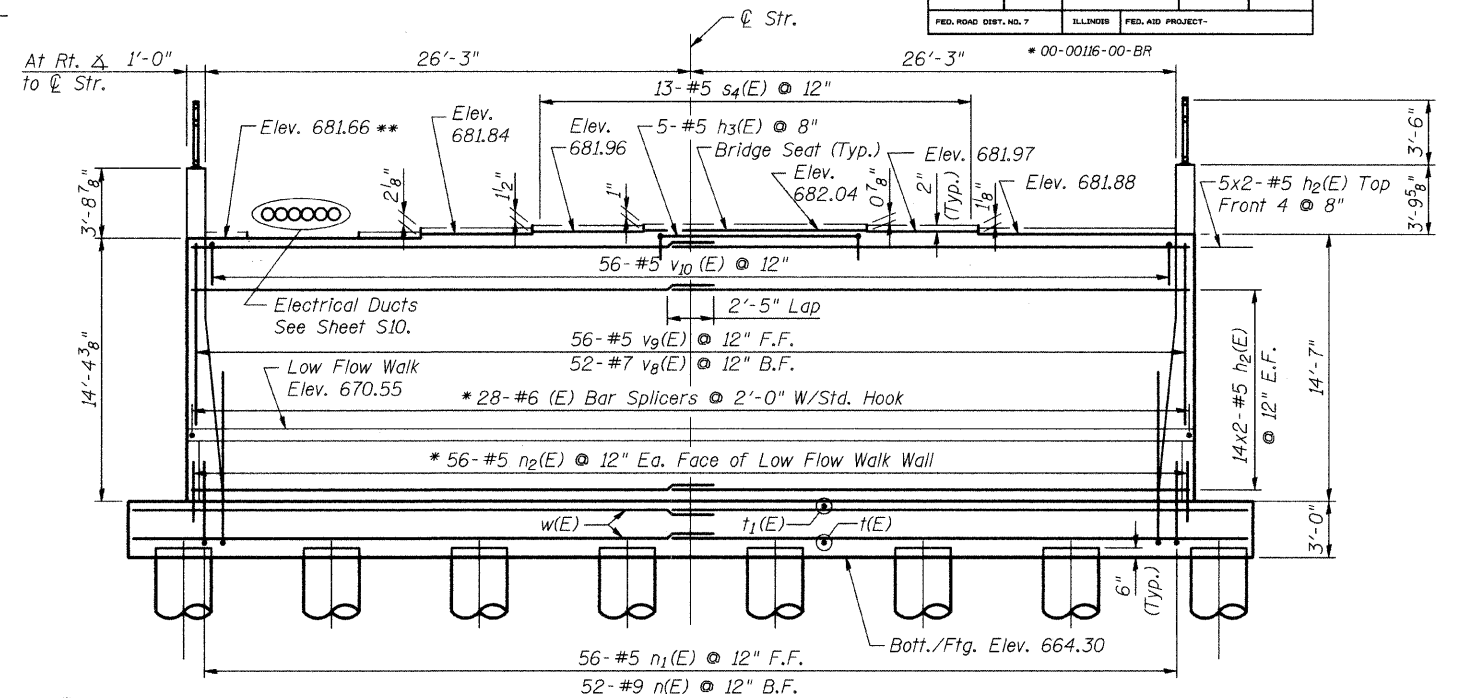
FOOTING PLAN



TOP PLAN

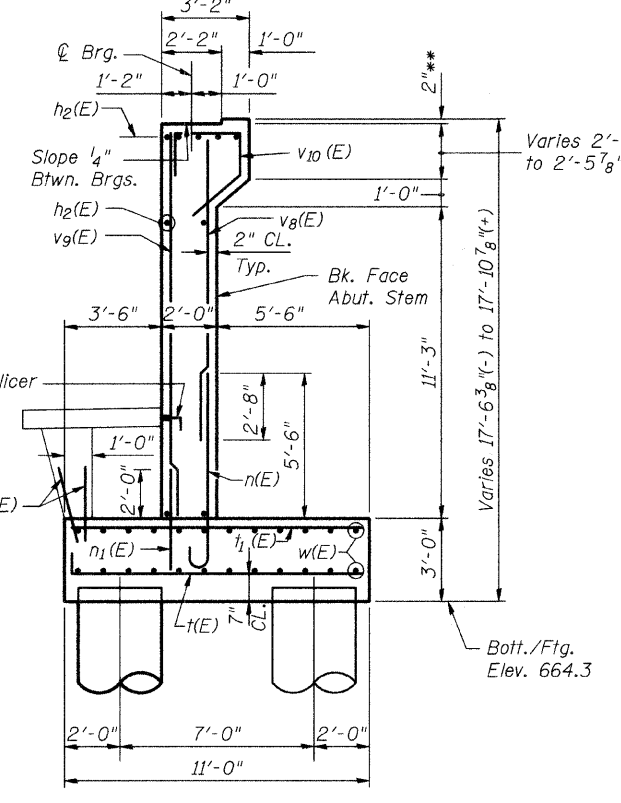


ANCHOR BOLT LOCATION

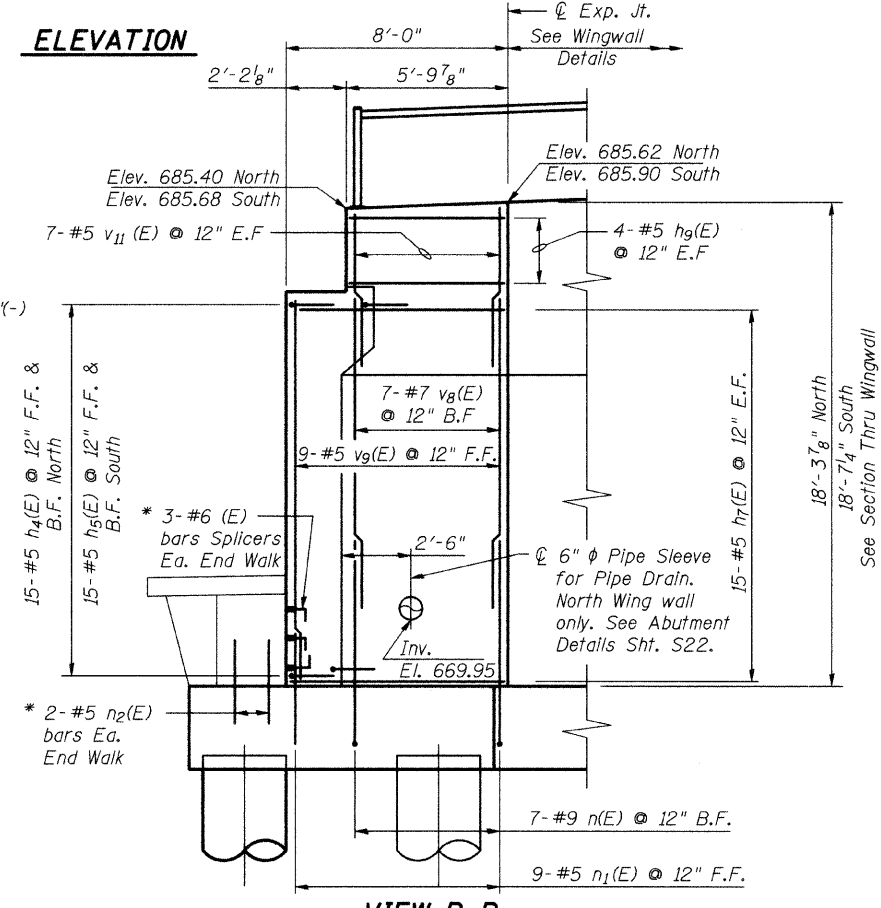


ELEVATION

* See Low-Flow Walkway Sht. S23 for details.
 ** Rear Haunch to remain level with Bridge Seat between Beams 1 and 2. See sht. S10 of S34.



SECTION A-A



VIEW B-B

EAST ABUTMENT PLAN AND ELEVATION

JEFFERSON AVENUE OVER
 WEST BRANCH DUPAGE RIVER
 FAU 3570 SECTION 00-00116-00-BR
 DUPAGE COUNTY
 STA. 7+64.45
 STRUCTURE NUMBER 022-6756

DESIGNED	JJI
CHECKED	SRT
DRAWN	GM
CHECKED	SRT

B Bollinger, Lach & Associates, Inc.