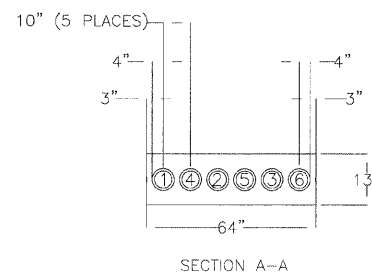
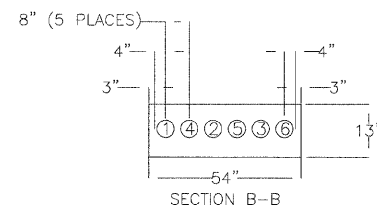
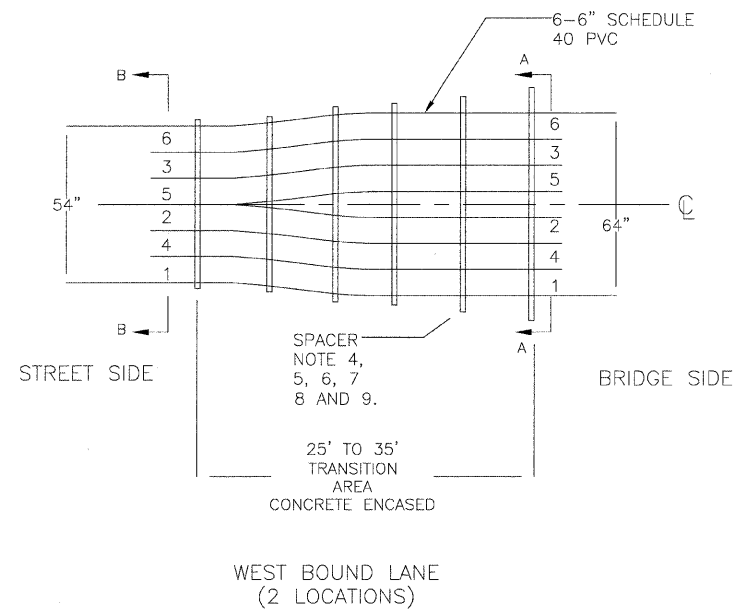


TRANSITION OF CONDUIT

F.A. RTE.	SECTION	COUNTY	TOTAL SHEETS	SHEET NO.
3570	00-00116-00-BR	DUPAGE	106	65
STA. 4+38.47		TO STA. 14+62.4		
FED. ROAD DIST. NO.		ILLINOIS	FED. AID PROJECT	
CONTRACT 83827				

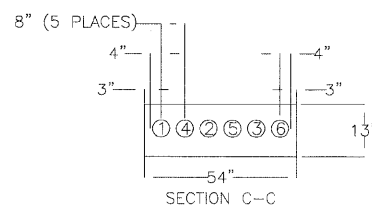
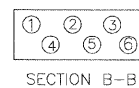
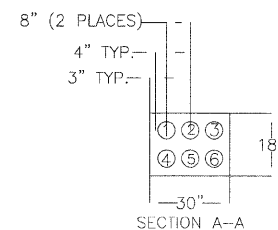
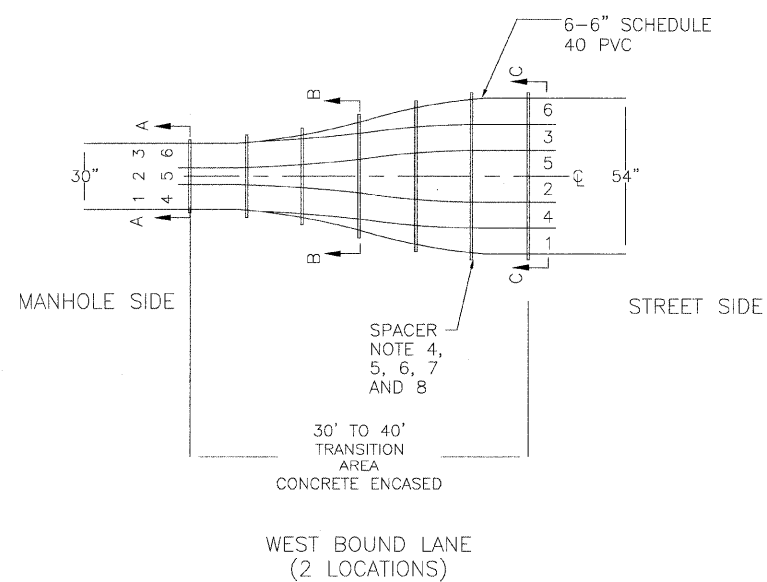
TRANSITION OF CONDUIT
FROM 1 HIGH BY 6 WIDE (10" CENTER)
TO 1 HIGH BY 6 WIDE (8" CENTER)
(6 INCH DUCT)



- 1 - THE DUCTS IN TRANSITION/TRANSPOSING FROM SECTION A-A TO SECTION B-B SHALL FOLLOW UNIFORM RADIUS REVERSE CURVES, WHICH LIE IN THE PLANE OF CURVED SURFACES, INDICATED IN THE PLAN OF DUCT AXES.
- 2 - SEPARATION BETWEEN DUCTS AND SHEATHING THICKNESS SHALL BE THE SAME AS FOR THE STANDARD FORMATION IN THE REMAINDER OF THE RUN.
- 3 - ALL EQUIPMENT, TOOLS AND MATERIAL TO COMPLETE THE TRANSPOSITION WILL BE FURNISHED AND INSTALLED BY THE CONTRACTOR, EXCEPT FOR THE SCHEDULE 40 PVC CONDUIT.
- 4 - CONTRACTOR TO SUPPLY SPACERS, COUPLING, ADAPTERS, TIES, AND WOOD FORM MATERIALS.
- 5 - USE PLASTIC TIES AS REQUIRED.
- 6 - USE 5 DEGREE BENDS AS REQUIRED.
- 7 - CONTRACTOR SHALL ASSEMBLE, PRE FIT, LEVEL, CUT ARRANGE, CHOP, CHIP, SUPPORT AND SECURE DUCT FOR A COMPLETE JOB.
- 8 - ALL CONDUITS SHALL BE ENCASED IN CONCRETE AND FORMED IN FIELD BY THE CONTRACTOR. USING FORMS CUT TO FIT OF WOOD ALL MATERIALS FURNISHED BY THE CONTRACTOR.
- 9 - CONTRACTOR TO FORM BENDS IN FIELD USING A HOT BOX IF MANUFACTURED BENDS ARE NOT ACCEPTABLE. ALL DUCT TO REMAIN ROUND.
- 10 - ALL EQUIPMENT AND TOOLS FURNISHED BY CONTRACTOR.
- 11 - ALL SCHEDULE 40 PVC CONDUIT SHALL BE SUPPLIED BY THE CITY AND INSTALLED BY THE CONTRACTOR.
- 12 - ALL STEEL TO PLASTIC COUPLING AND HDPE TO STEEL AND HDPE TO PLASTIC SHALL BE FURNISHED AND INSTALLED BY THE CONTRACTOR.

TRANSPOSING OF CONDUIT

TRANSPOSING OF CONDUIT (SCHEDULE 40 PVC)
FROM 1 HIGH BY 6 WIDE
TO 2 HIGH BY 3 WIDE
(6 INCH DUCT)



- 1 - THE DUCTS IN TRANSITION/TRANSPOSING FROM SECTION A-A TO SECTION B-B SHALL FOLLOW UNIFORM RADIUS REVERSE CURVES, WHICH LIE IN THE PLANE OF CURVED SURFACES, INDICATED IN THE PLAN OF DUCT AXES.
- 2 - SEPARATION BETWEEN DUCTS AND SHEATHING THICKNESS SHALL BE THE SAME AS FOR THE STANDARD FORMATION IN THE REMAINDER OF THE RUN.
- 3 - ALL EQUIPMENT, TOOLS AND MATERIAL TO COMPLETE THE TRANSPOSITION WILL BE FURNISHED AND INSTALLED BY THE CONTRACTOR, EXCEPT FOR THE SCHEDULE 40 PVC CONDUIT.
- 4 - CONTRACTOR TO SUPPLY SPACERS, COUPLING, ADAPTERS, TIES, AND WOOD FORM MATERIALS.
- 5 - USE PLASTIC TIES AS REQUIRED.
- 6 - USE 5 DEGREE BENDS AS REQUIRED.
- 7 - CONTRACTOR SHALL ASSEMBLE, PRE FIT, LEVEL, CUT ARRANGE, CHOP, CHIP, SUPPORT AND SECURE DUCT FOR A COMPLETE JOB.
- 8 - ALL CONDUITS SHALL BE ENCASED IN CONCRETE AND FORMED IN FIELD BY THE CONTRACTOR. USING FORMS CUT TO FIT OF WOOD ALL MATERIALS FURNISHED BY THE CONTRACTOR.
- 9 - CONTRACTOR TO FORM BENDS IN FIELD USING A HOT BOX IF MANUFACTURED BENDS ARE NOT ACCEPTABLE. ALL DUCT TO REMAIN ROUND.
- 10 - ALL EQUIPMENT AND TOOLS FURNISHED BY CONTRACTOR.
- 11 - ALL SCHEDULE 40 PVC CONDUIT SHALL BE SUPPLIED BY THE CITY AND INSTALLED BY THE CONTRACTOR.
- 12 - ALL STEEL TO PLASTIC COUPLING AND HDPE TO STEEL AND HDPE TO PLASTIC SHALL BE FURNISHED AND INSTALLED BY THE CONTRACTOR.

CITY OF NAPERVILLE/DEPARTMENT OF PUBLIC UTILITIES - ELECTRIC			
CALL J.U.L.I.E. 48 HRS. PRIOR TO CONSTRUCTION			
PROJECT TITLE JEFFERSON AV. BRIDGE DUCTBANK INSTALLATION		MAP NO.:	CAD FILE: 0054679001D10.DWG
PROJECT DESCRIPTION		DRAWN BY: JK, PM	PROJECT NO.:
TRENCH SECTION DETAILS		WORK REQUEST NO.:	COMPLETED BY:
DATE	6-01 09	56270	
ISSUED			
ENGINEER	PSM	APRV:	SCALE: NTS
REVISION	1 2 3		SHEET 10 OF 30