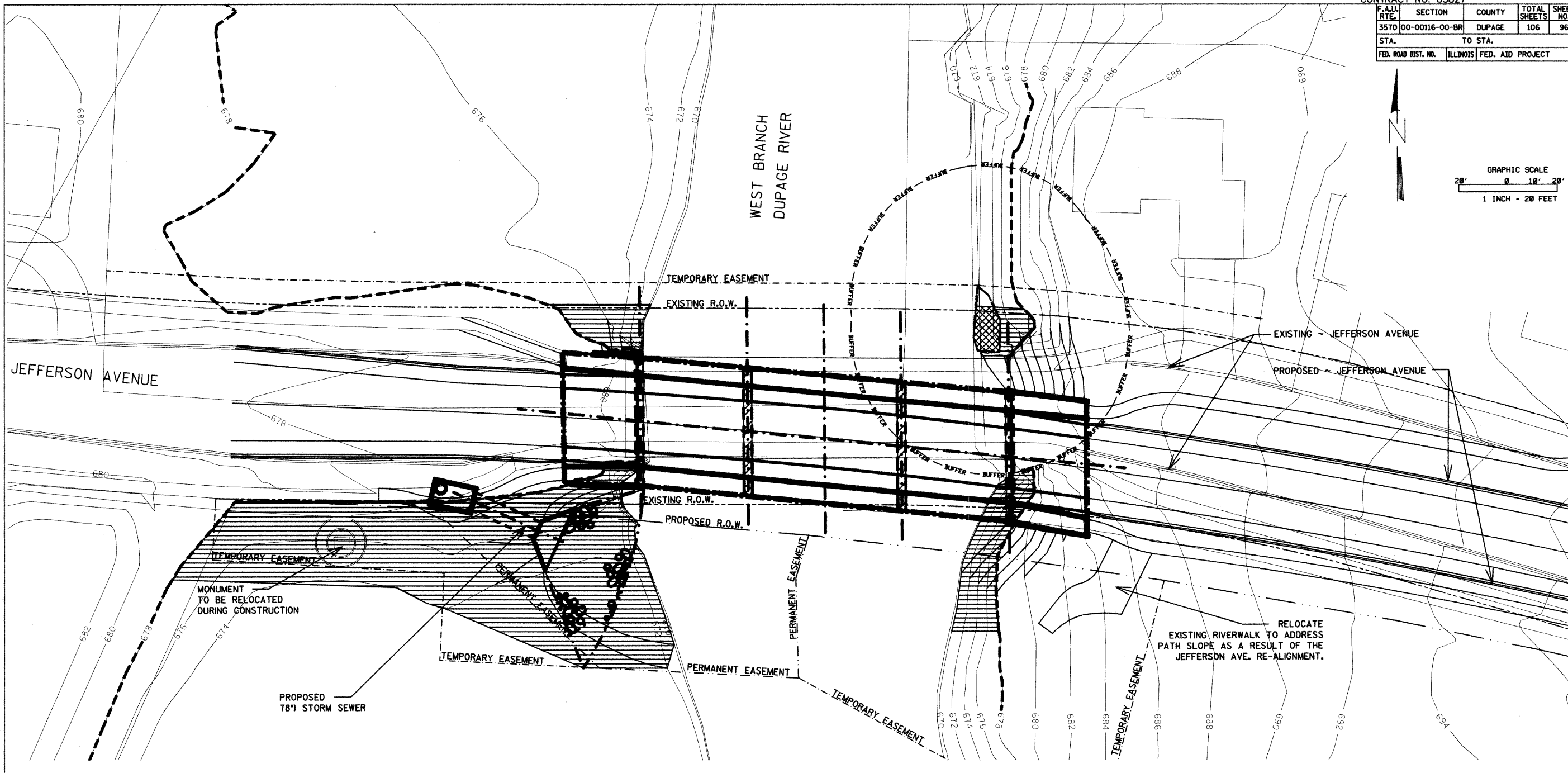
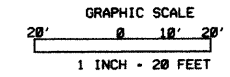


CONTRACT NO. 83827

F.A.J. RTE.	SECTION	COUNTY	TOTAL SHEETS	SHEET NO.
3570	00-00116-00-BR	DUPAGE	106	96
STA.		TO STA.		
FED. ROAD DIST. NO.		ILLINOIS FED. AID PROJECT		

IMPACT PLAN	REVISIONS	Date:
	SUBMITTAL	
	80% SUBMITTAL	



JEFFERSON AVENUE BRIDGE
Impact Plan
Naperville, Illinois

1 IMPACT PLAN
W1.0

- LEGEND**
- FLOODPLAIN/RIPARIAN ENVIRONMENT BOUNDARY
 - - - WETLAND BOUNDARY
 - - - WETLAND BUFFER
 - - - BRIDGE LIMITS
 - ▨ RIPARIAN ENVIRONMENT IMPACT
 - ▩ WETLAND IMPACT
 - ▧ WATERS OF THE U.S. IMPACT
 - - - TEMPORARY EASEMENT
 - - - PERMANENT EASEMENT
 - - - EXISTING R.O.W.
 - - - PROPOSED R.O.W.

IMPACT SUMMARY TABLE

IMPACT TYPE	SIZE (ACRES)
WETLAND	0.004
WATERS OF U.S.	0.008
RIPARIAN ENVIRONMENT	0.245

NOTE:
Wetland and Riparian Impacts illustrated by Planning Resources. All other information has been provided by Bollinger and Lach Associates and is assumed to be accurate.

WETLAND CONSULTANT: PLANNING RESOURCES INC.
DATE OF DELINEATION: 8/8/01

REVIEWED BY: K.M.J.	APPROVED BY: E.D.W.	DRAWN/DESIGNED BY: E.D.W.	PROJECT NO. P20164-00
			Date: 2.17.04
300 WEST LIBERTY DRIVE NAPERVILLE, ILLINOIS 60563 PH: 630.688.5278 FAX: 630.688.4152			Scale: 1"=20'-0"

Drawing
W1.0
Impact Plan