

F.A.U. RTE.	SECTION	COUNTY	TOTAL SHEETS	SHEET NO.
369	01-00056-15-BR	WILL	31	1

INDEX OF SHEETS

- 1 COVER SHEET
- 2 GENERAL NOTES, SPECIFICATIONS, & STATE STANDARDS
- 3 SUMMARY OF QUANTITIES
- 4 TYPICAL SECTIONS
- 5 ALIGNMENT, TIES, & BENCHMARKS
- 6 PLAN AND PROFILE
- 7 TEMPORARY DETOUR PLAN
- 8 EROSION CONTROL PLAN
- 9 PAVEMENT MARKING & RESTORATION PLAN
- 10-22 BRIDGE PLANS
- 23 DISTRICT ONE TYPICAL PAVEMENT MARKINGS
- 24 TRAFFIC CONTROL AND PROTECTION FOR SIDE ROADS, INTERSECTIONS, AND DRIVEWAYS AND BENCHING DETAIL FOR EMBANKMENT WIDENING
- 25-31 CROSS SECTIONS

ENGINEER:

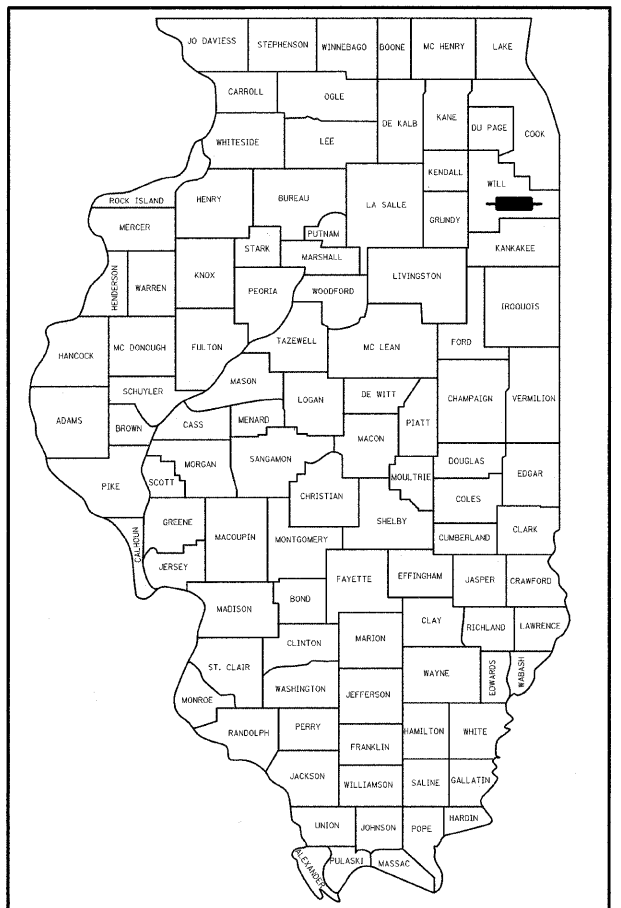
SEC GROUP, INC.
 420 N. FRONT STREET
 MCHENRY, ILLINOIS 60050
 (815) 385-1778
 CONTACT:
 ROBERT G. DAVIES, S.E., P.E. - STRUCTURAL ENGINEER
 T. SCOTT CREECH, P.E. - PROJECT ENGINEER

SURVEYOR:

SEC GROUP INC.
 651 PRAIRIE POINT DRIVE
 YORKVILLE, ILLINOIS 60560
 (630) 553-7560

WILL COUNTY DEPARTMENT OF HIGHWAYS PLANS FOR PROPOSED FEDERAL AID HIGHWAY

**FAU ROUTE 369
 CEDAR ROAD
 OVER JACKSON CREEK
 SECTION 01-00056-15-BR
 BRIDGE REPLACEMENT AND DITCH GRADING
 PROJECT NO. BHS-0295 (103)
 EXISTING S.N. 099-3026
 PROPOSED S.N. 099-3381
 WILL COUNTY, ILLINOIS
 C-91-149-01**

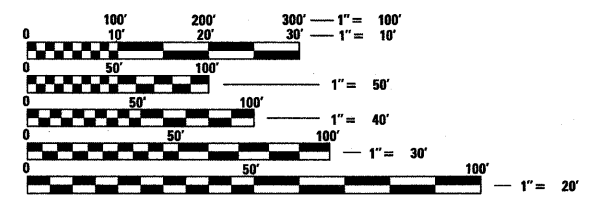
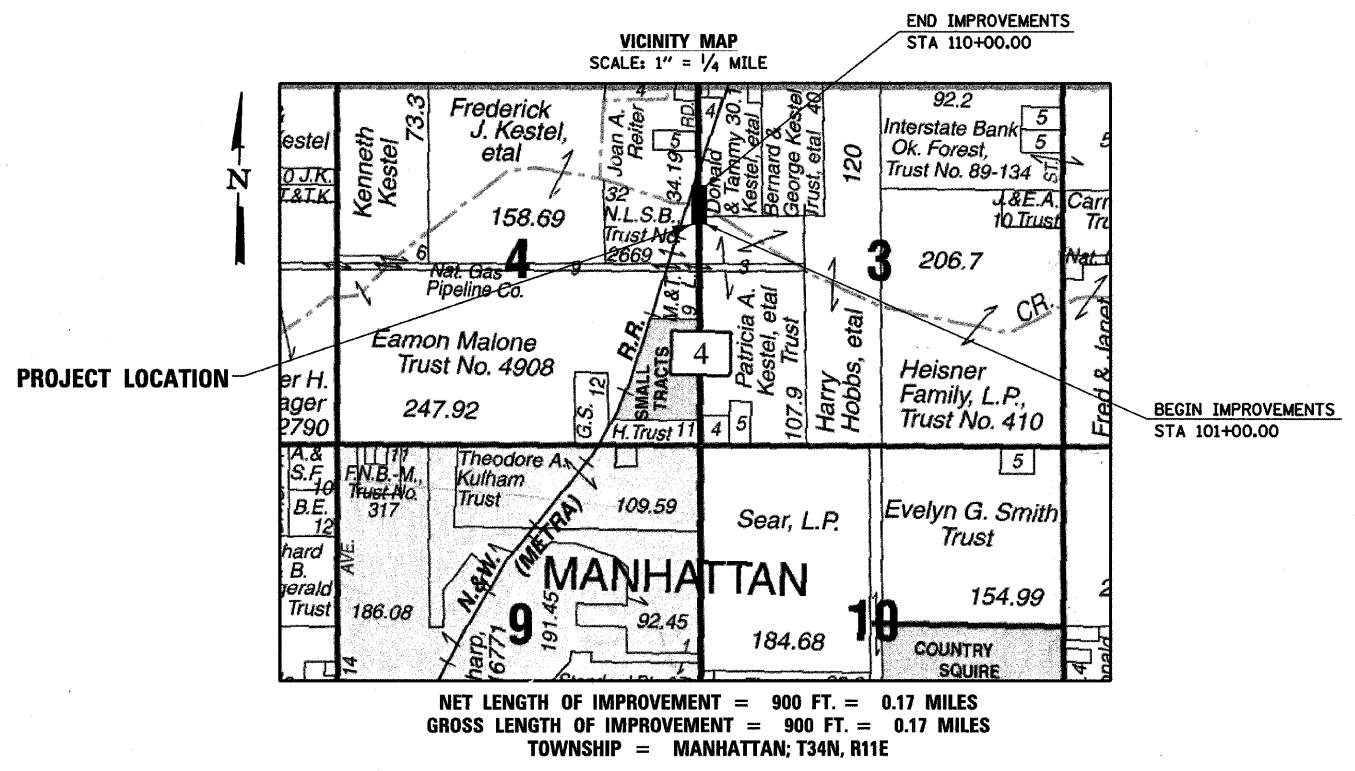


LOCATION OF SECTION INDICATED THIS: - [highlighted area]

STRUCTURE INFORMATION:

EXISTING SN 099-3026:
 EXISTING SINGLE SPAN STRUCTURE CONSISTS OF CONCRETE T-BEAMS WITH AN OUT-TO-OUT WIDTH OF 28'-4 1/2" AND A TOTAL LENGTH OF 69'-2" BK. TO BK. ABUTMENTS WITH A 35 DEGREE SKEW. THE SUBSTRUCTURE CONSISTS OF CLOSED CONCRETE ABUTMENTS SUPPORTED ON UNTREATED TIMBER PILES. STRUCTURE TO BE REMOVED AS SHOWN WITH NO SALVAGE.

PROPOSED SN 099-3381:
 PROPOSED SINGLE SPAN STRUCTURE CONSISTS OF A CAST IN PLACE CONCRETE DECK ON STEEL PLATE GIRDERS WITH AN OUT-TO-OUT WIDTH OF 43'-2" AND A TOTAL LENGTH OF 105'-4 1/2" BK. TO BK. OF ABUTMENTS WITH A 30 DEGREE SKEW. THE PROPOSED SUBSTRUCTURE CONSISTS OF INTEGRAL ABUTMENTS.



FULL SIZE PLANS HAVE BEEN PREPARED USING STANDARD ENGINEERING SCALES. REDUCED SIZED PLANS WILL NOT CONFORM TO STANDARD SCALES. IN MAKING MEASUREMENTS ON REDUCED PLANS, THE ABOVE SCALES MAY BE USED.

J.U.L.I.E.
 JOINT UTILITY LOCATION INFORMATION FOR EXCAVATION
 1-800-892-0123
 METRA
 1-312-322-6900

CONTRACT NO. 83894

STRUCTURAL ENGINEER'S SIGN & SEAL

ROBERT G. DAVIES, S.E., P.E.
 DATE: April 17, 2009
 EXPIRES: 11/30/2010

FUNCTIONAL CLASSIFICATION
 MINOR ARTERIAL (URBAN)

DESIGN SPEED
 CEDAR: 60 MPH

SPEED LIMIT
 CEDAR: 55 MPH

2004 TRAFFIC DATA:
 CEDAR: ADT = 4684

PROFESSIONAL ENGINEER'S SIGN & SEAL

GLENN TREDINNICK
 GLENN TREDINNICK, P.E.
 DATE: APRIL 16, 2009
 NOVEMBER 30, 2009
 EXPIRES

**PRINTED BY THE AUTHORITY
 OF THE STATE OF ILLINOIS**

WILL COUNTY DEPARTMENT OF HIGHWAYS

APPROVED: April 20, 2009 (DATE)
 WILL COUNTY DEPARTMENT OF HIGHWAYS, COUNTY ENGINEER

PASSED: May 11, 2009 (DATE)
 DISTRICT 1 ENGINEER OF LOCAL ROADS & STREETS

RELEASING FOR BID
 BASED ON LIMITED
 REVIEW: May 12, 2009 (DATE)
 DEPUTY DIRECTOR OF HIGHWAYS, REGION 1 ENGINEER

FEDERAL AID DESIGN ENGINEER: MELCHOR MANGORA (847) 705-4408
 COMPANY NAME: SEC GROUP, INC.
 PROJECT CONTACT: T. SCOTT CREECH
 CLIENT: METRA
 DATE: 4/15/2009
 FILE: W:\Jobs\2009\041509\Sec\Shawna\041509-611.dgn
 SEC PROJ. NO.: WILL 0-00596-14