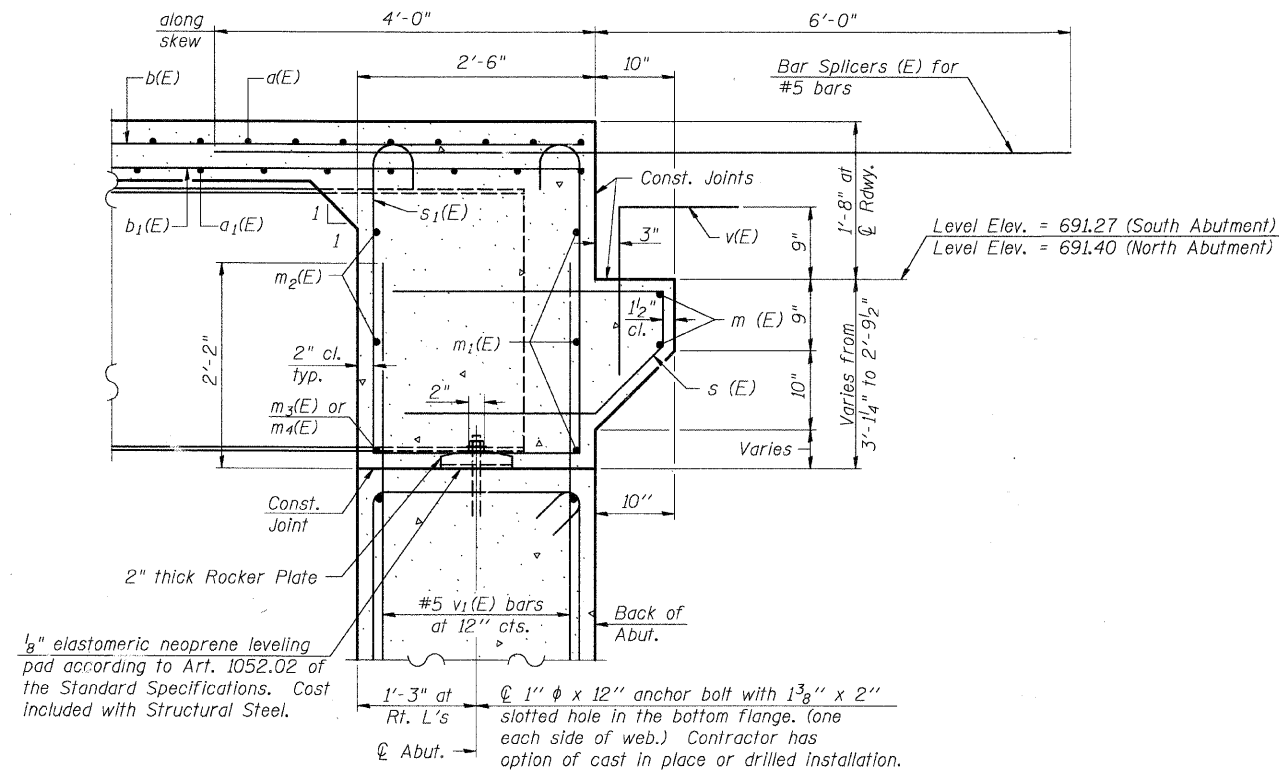


DIAPHRAGM ELEVATION AT ABUTMENT

Notes:

Reinforcement bars in diaphragm are billed with superstructure on sheet S-6.
Concrete in diaphragm is included with Concrete Superstructure on sheet S-6.
For details of bars s(E) and s1(E) see sheet S-6.
The s(E) and s1(E) bars shall be placed parallel to the beams.
Spacing for these bars shall be at right angles to the beams.

MIN. BAR LAP
#6 bar = 2'-9"



SECTION A-A

Dimensions at right angles to abutment, except as shown.

DESIGNED	KMA
CHECKED	AEU
DRAWN	WJH
CHECKED	RGD

COMPANY NAME: SEC GROUP, INC.
 CLIENT: COUNTY OF WILL
 PROJECT: CEDAR ROAD OVER JACKSON CREEK
 DATE: 09/28/09 PM 4:15

SEC GROUP, INC.
 Illinois Professional Design Firm # 184-000108
 Engineering • Surveying • Planning • Landscape Architecture
 420 N. Front Street, Mchenry, IL 60050
 1.815.385.1778 F. 815.385.1781
 www.secgroupinc.com

WILL COUNTY DEPARTMENT OF HIGHWAYS
 DIAPHRAGM DETAILS
 CEDAR ROAD OVER
 JACKSON CREEK
 WILL COUNTY
 SECTION NO. 01-00056-15-BR
 STRUCTURE NO. 099-3381
 DATE 4-10-2009