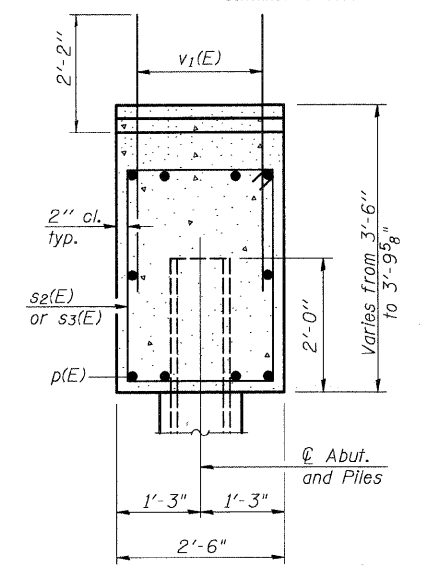
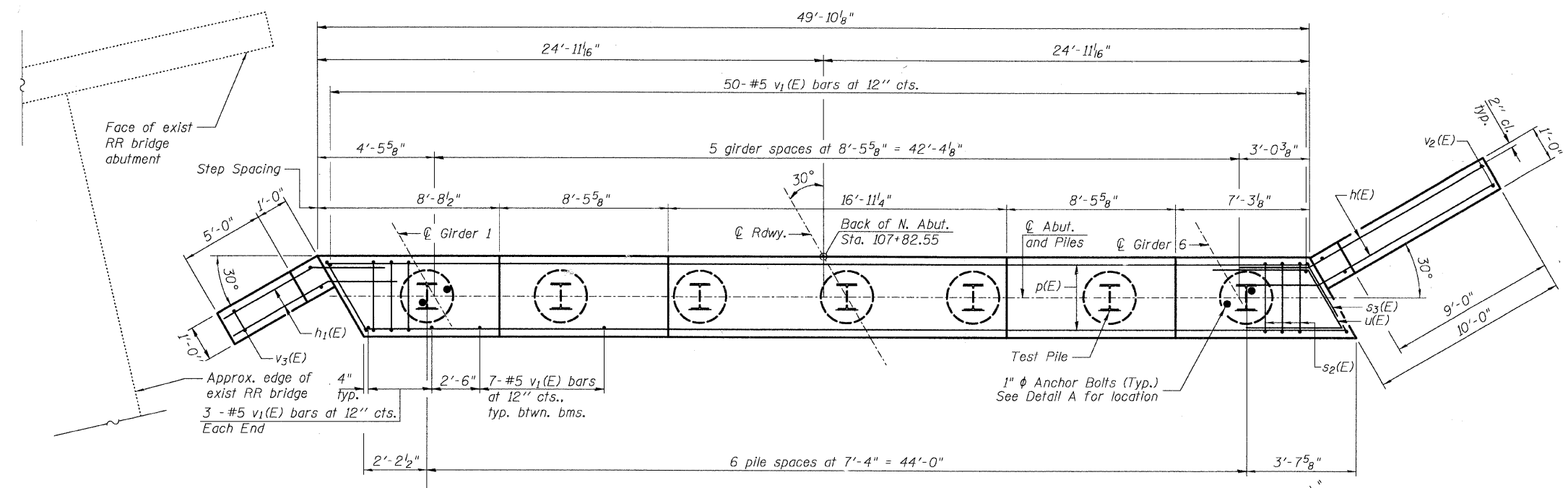


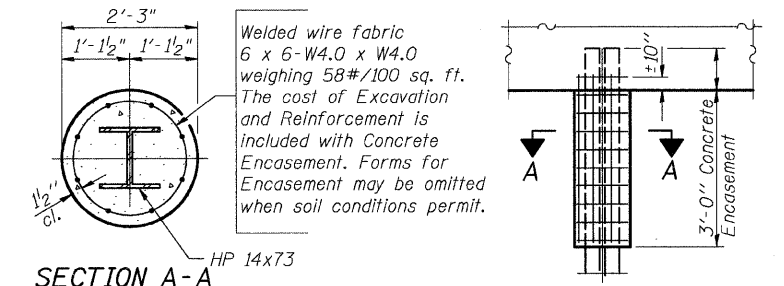
ELEVATION
(Looking North)



SEC. THRU ABUT.



PLAN



SECTION A-A

PILE ENCASEMENT DETAIL

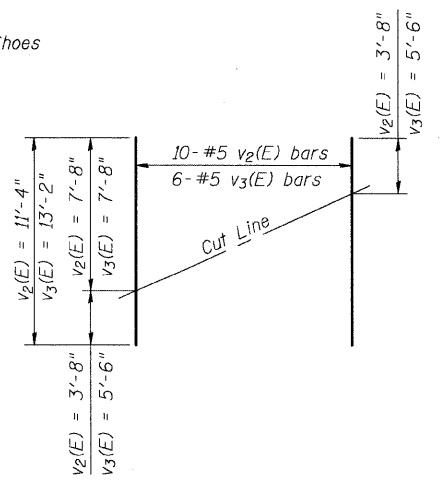
BILL OF MATERIAL

Bar	No.	Size	Length	Shape
h(E)	26	#5	12'-0"	
h1(E)	26	#5	8'-0"	
p(E)	10	#7	49'-6"	
s2(E)	48	#5	11'-7"	
s3(E)	2	#5	12'-3"	
u(E)	8	#6	9'-6"	
v1(E)	91	#5	4'-4"	
v2(E)	10	#5	11'-4"	
v3(E)	6	#5	13'-2"	
Concrete Structures		Cu. Yd.	20.7	
Reinforcement Bars, Epoxy Coated		Pound	2,890	
Structure Excavation		Cu. Yd.	172	
Furnishing Steel Piles HP 14x73		Foot	402	
Driving Piles		Foot	402	
Pile Shoes		Each	7	
Test Pile HP 14x73		Each	1	

PILE DATA

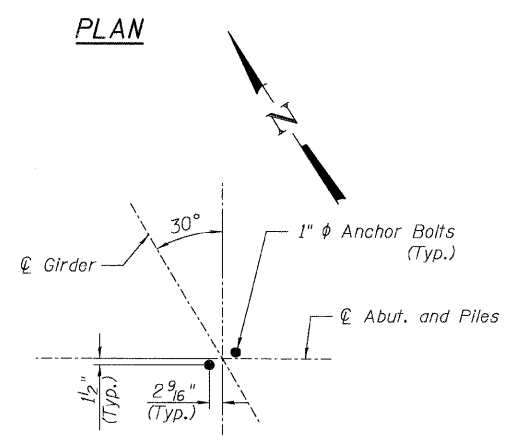
Type & Size: Refusal Steel HP 14x73 with Pile Shoes
Nominal Required Bearing: 577.8 kips
Allowable Resistance Available: 192.6 kips
Est. Length: 67 ft.
No. Required: 6 plus one (1) Test Pile

Notes: The Steel H-piles shall be according to AASHTO M270 Grade 50.

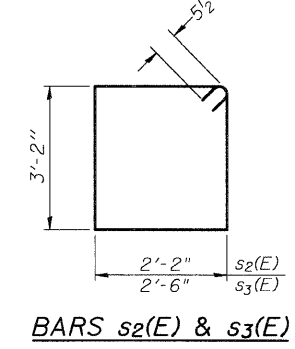


FIELD CUTTING DIAGRAM

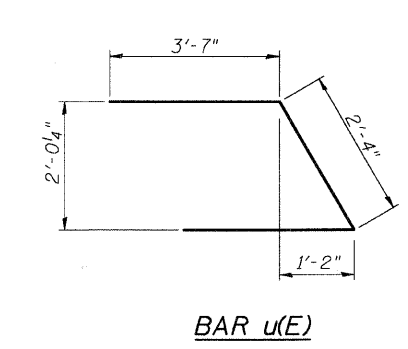
Order v2(E) and v3(E) full length. Cut as shown and use remainder of bars in opposite face.



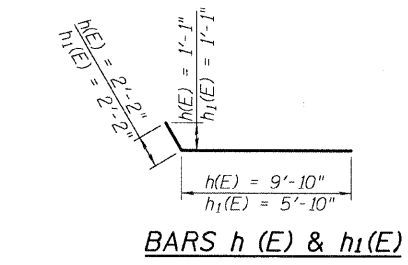
DETAIL A



BARS s2(E) & s3(E)



BAR u(E)



BARS h(E) & h1(E)

Notes: Pour steps monolithically with cap. Reinforcement bars designated (E) shall be epoxy coated.

DESIGNED	KMA
CHECKED	AEU
DRAWN	WJH
CHECKED	RGD

COMPANY NAME: SEC GROUP, INC.
 CLIENT: WILL COUNTY DEPARTMENT OF HIGHWAYS
 PROJECT: CEDAR ROAD OVER JACKSON CREEK
 SHEET NO: S-13
 DATE: 4-10-2009

SEC GROUP, INC.
 Illinois Professional Design Firm # 184-000108
 • Engineering • Surveying • Planning • Landscape Architecture
 420 N. Front Street, Mokena, IL 60450
 T 815.385.1778 F 815.385.1781
 www.secgroupinc.com

WILL COUNTY DEPARTMENT OF HIGHWAYS
 NORTH ABUTMENT DETAILS
 CEDAR ROAD OVER JACKSON CREEK
 WILL COUNTY
 SECTION NO. 01-00056-15-BR
 STRUCTURE NO. 099-3381
 DATE 4-10-2009