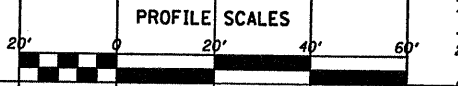
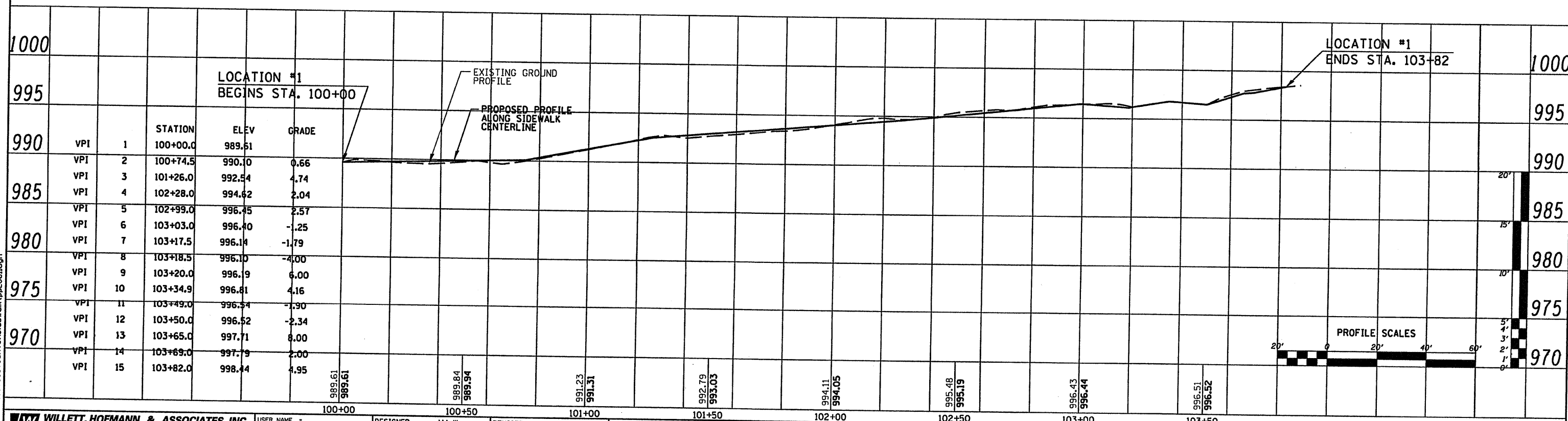
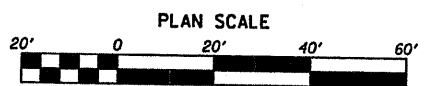
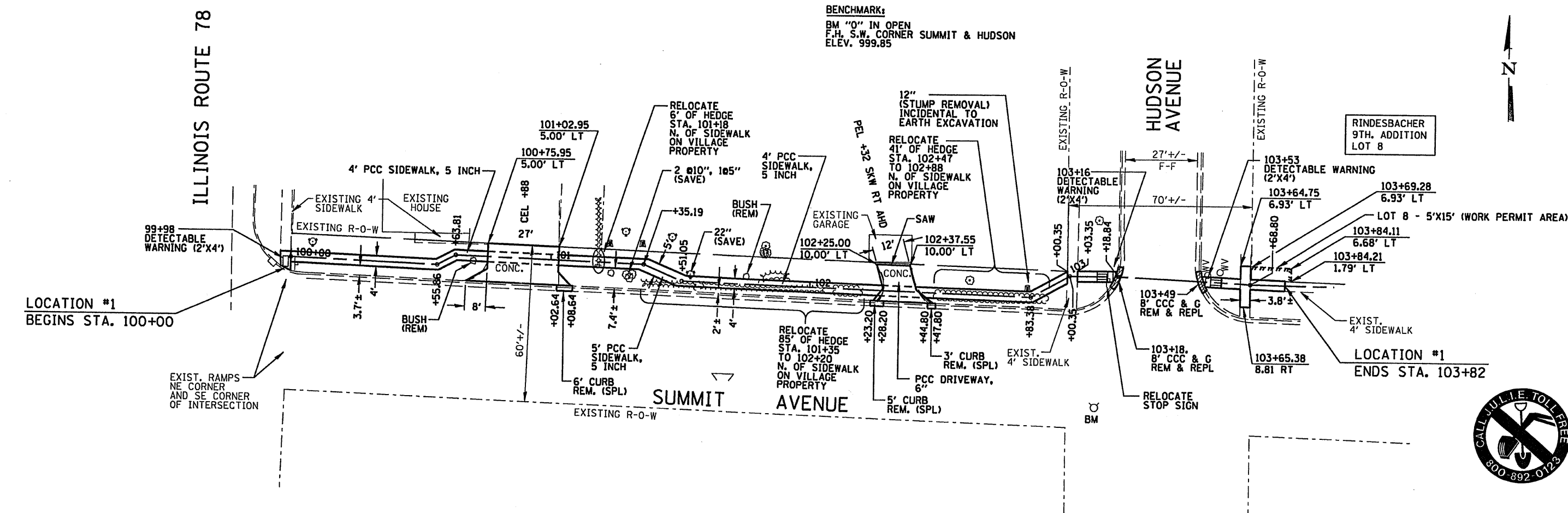


DATE	
BY	
PLAN	
NO.	
DATE	
BY	
DATE	
BY	
DATE	
BY	
DATE	

DATE	
BY	
PROFILE	
NO.	
DATE	
BY	
DATE	
BY	
DATE	
BY	
DATE	

BENCHMARK:  
 BM "O" IN OPEN  
 F.H. S.W. CORNER SUMMIT & HUDSON  
 ELEV. 999.85



S:\Freeport\1105d085\stockton\sidewalk\ppLoc1.dgn

**WILLET, HOFMANN & ASSOCIATES, INC.**  
 CONSULTING ENGINEERS  
 809 East Second Street Dixon, IL 61021  
 Phone 815.294.3361 Fax 815.294.3385  
 Design Firm # 184-00918  
 www.willett-hofmann.com

USER NAME =	DESIGNED - M.L.W.	REVISED - 6/3/09
PLOT SCALE =	DRAWN - D.L.B.	REVISED -
PLOT DATE =	CHECKED - J.L.H.	REVISED -
	DATE - 3/16/09	REVISED -

**STOCKTON, IL.**  
**SAFER ROUTES TO SCHOOL PROGRAM**

**LOCATION #1 - SUMMIT AVENUE (WEST)**  
**PLAN AND PROFILE**

F.A. RTE.	SECTION	COUNTY	TOTAL SHEETS	SHEET NO.
	08-00033-00-SW	JO DAVIEST	20	6
STA. 100+00 TO 103+82			CONTRACT 85459	
FED. ROAD DIST. NO. - ILLINOIS FED. AID PROJECT				

