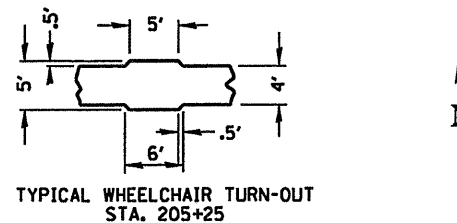


BENCHMARK:
 BM "M" IN MUELLER
 F.H. S.W. CORNER STOCKTON
 & SUMMIT
 ELEV. 1002.58

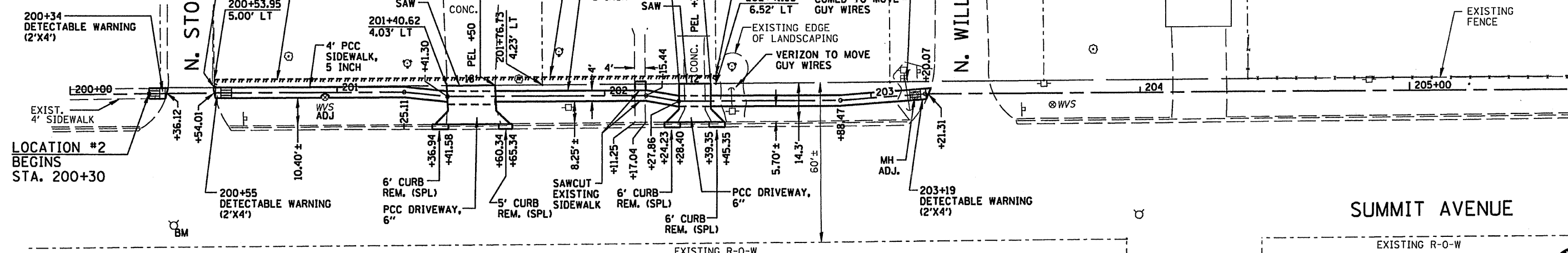
RINDESBACHER
 9TH. ADDITION
 LOT 15

RINDESBACHER
 9TH. ADDITION
 LOT 16

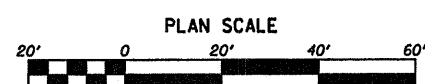
RINDESBACHER
 9TH. ADDITION
 LOT 22



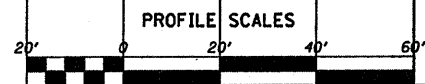
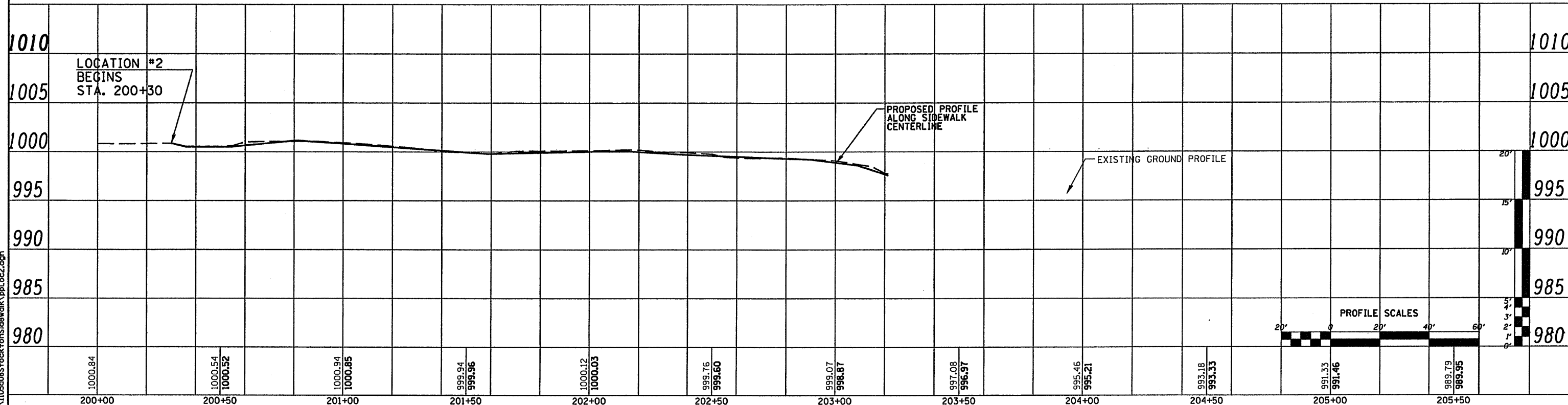
DATE	
BY	
PLAN	
SURVEYED	
PLOTTED	
GRADES CHECKED	
STRUCTURE NOTATIONS CHK'D	
NOTE BOOK NO.	
FILE NAME	



VPI	STATION	ELEV	GRADE	VPI	STATION	ELEV	GRADE
VPI 1	200+30.00	1,000.88		VPI 10	203+21.31	997.60	-7.98
VPI 2	200+36.12	1,000.52	-5.88				
VPI 3	200+54.01	1,000.52	0.00				
VPI 4	200+81.00	1,001.19	2.49				
VPI 5	201+59.00	999.80	-1.78				
VPI 6	202+13.00	1,000.10	0.56				
VPI 7	202+40.00	999.70	-1.48				
VPI 8	202+90.00	999.20	-1.00				
VPI 9	203+09.04	998.58	-3.26				



DATE	
BY	
PROFILE	
SURVEYED	
PLOTTED	
GRADES CHECKED	
STRUCTURE NOTATIONS CHK'D	
NOTE BOOK NO.	
FILE NAME	



SA:\Fr\epor\1105c085\stockton\sidewalk\ppLoc2.dgn

WILLET, HOFMANN & ASSOCIATES, INC. CONSULTING ENGINEERS 809 East Second Street Dixon, IL 61021 Phone 815.284.3381 Fax 815.284.3385 Design Firm # 184-00918 www.willett-hofmann.com	USER NAME =	DESIGNED - M.L.W.	REVISED - 6/3/09	STOCKTON, IL. SAFER ROUTES TO SCHOOL PROGRAM	LOCATION #2 - SUMMIT AVENUE (EAST) PLAN AND PROFILE	F.A. RTE.	SECTION	COUNTY	TOTAL SHEETS	SHEET NO.
	PLOT SCALE =	DRAWN - D.L.B.	REVISED -			08-00033-00-SW	JO DAVIESS	20	7	
	PLOT DATE =	CHECKED - J.L.H.	REVISED -			STA. 200+30 TO STA. 205+60	CONTRACT	85459		
		DATE - 3/18/09	REVISED -			FED. ROAD DIST. NO. -	ILLINOIS FED. AID PROJECT			