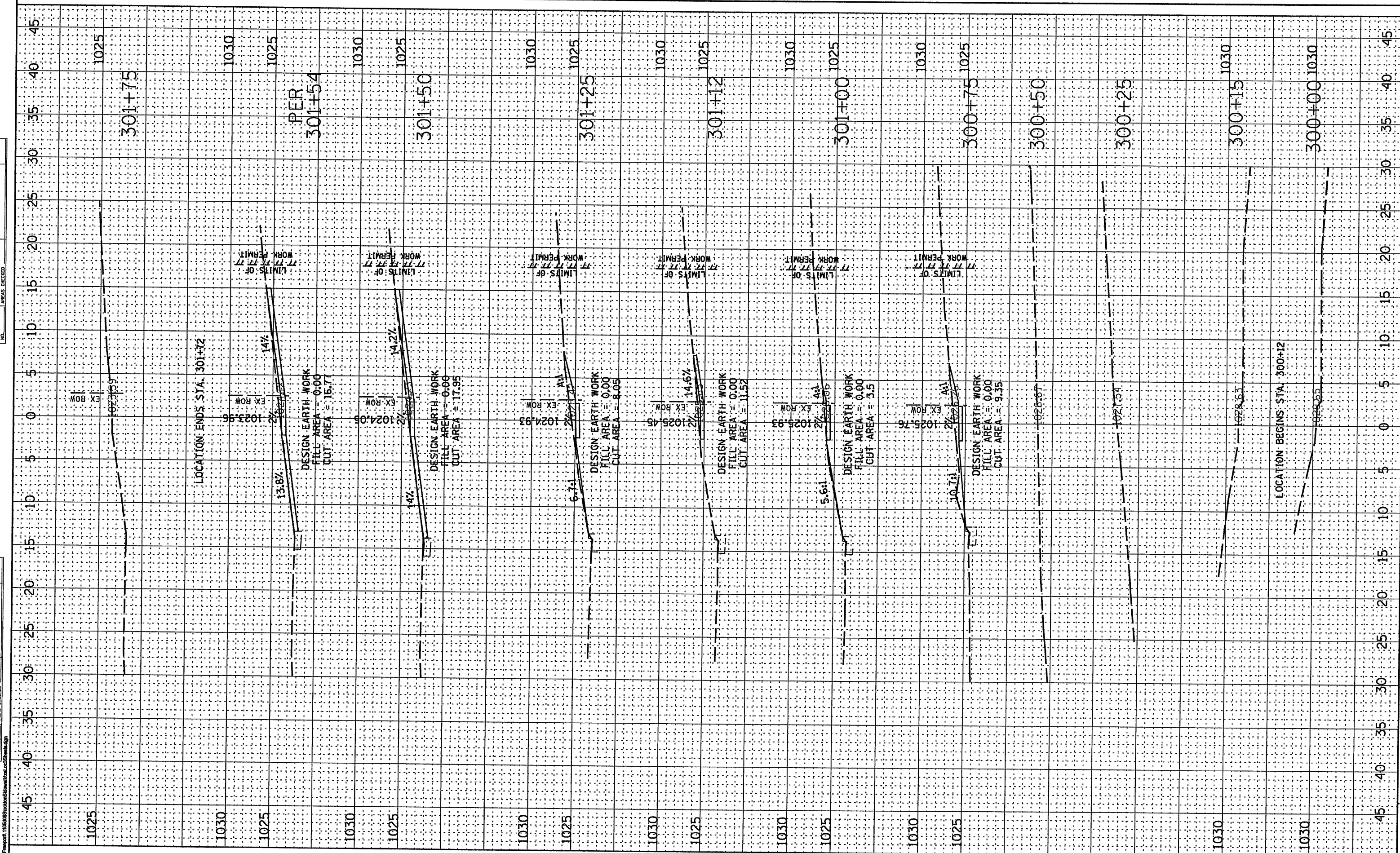


FINAL SURVEY	SURVEYED	BY	DATE
NOTE BOOK	PLOTTED		
NO.	TEMPLATE		
	AREAS		
	CHECKED		

ORIGINAL SURVEY	SURVEYED	BY	DATE
NOTE BOOK	PLOTTED		
NO.	TEMPLATE		
	AREAS		
	CHECKED		



WILLET, HOFMANN & ASSOCIATES, INC.
 CONSULTING ENGINEERS
 809 East Second Street Dixon, IL 61021
 Phone 815.294.3381 Fax 815.294.3385
 Design Firm 184-00918
 www.willett-hofmann.com

USER NAME =	DESIGNED - M.L.W.	REVISED - 6/3/09
PLOT SCALE =	DRAWN - D.L.B.	REVISED -
PLOT DATE =	CHECKED - J.L.H.	REVISED -
	DATE - 3/16/09	REVISED -

STOCKTON, IL.
SAFER ROUTES TO SCHOOL PROGRAM

LOCATION #3 - MAPLE AVENUE (SOUTH)
CROSS SECTIONS

F.A. RTE.	SECTION	COUNTY	TOTAL SHEETS	SHEET NO.
	08-00033-00-SW	Jo Daviess	20	15
STA. 300+00 TO STA. 301+75		CONTRACT NO. 85459		
FED. ROAD DIST. NO. - ILLINOIS FED. AID PROJECT				