

CONTRACT NO.			
F.A. DIST.	SECTION	COUNTY	TOTAL SHEETS
06	00233-00-B7	ROCK ISLAND	75
STA. 0+00/175+00 TO STA. 6+00/177+38.83			
FED. ROAD DIST. NO. 2 ILLINOIS FED. AID PROJECT			

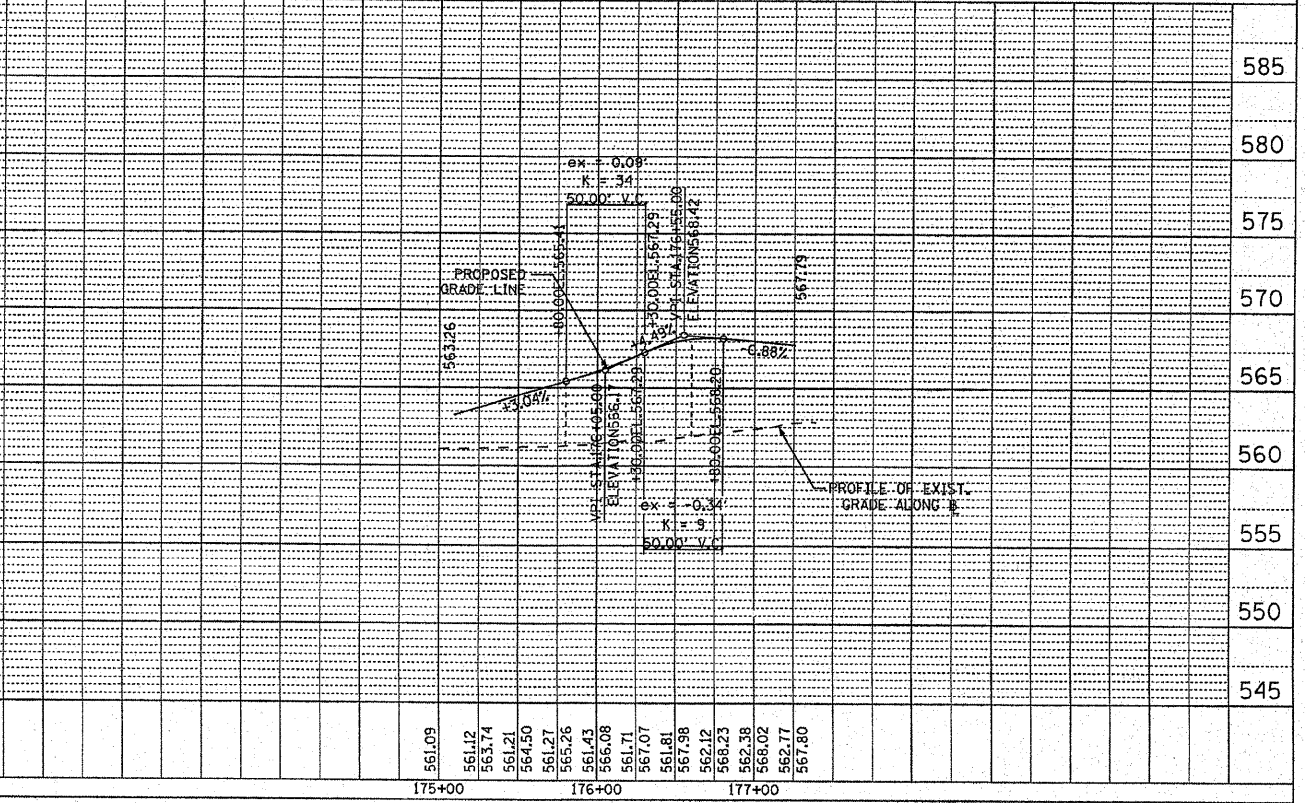
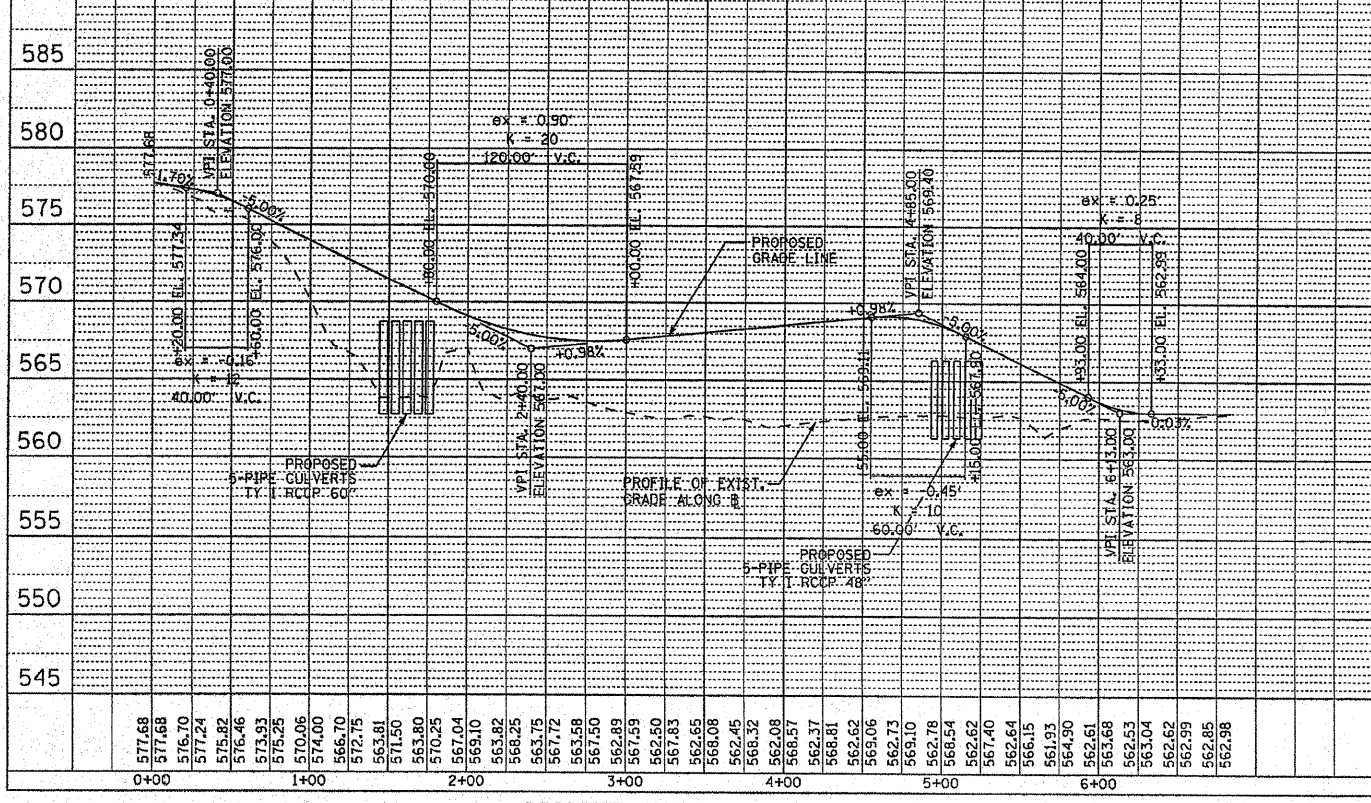
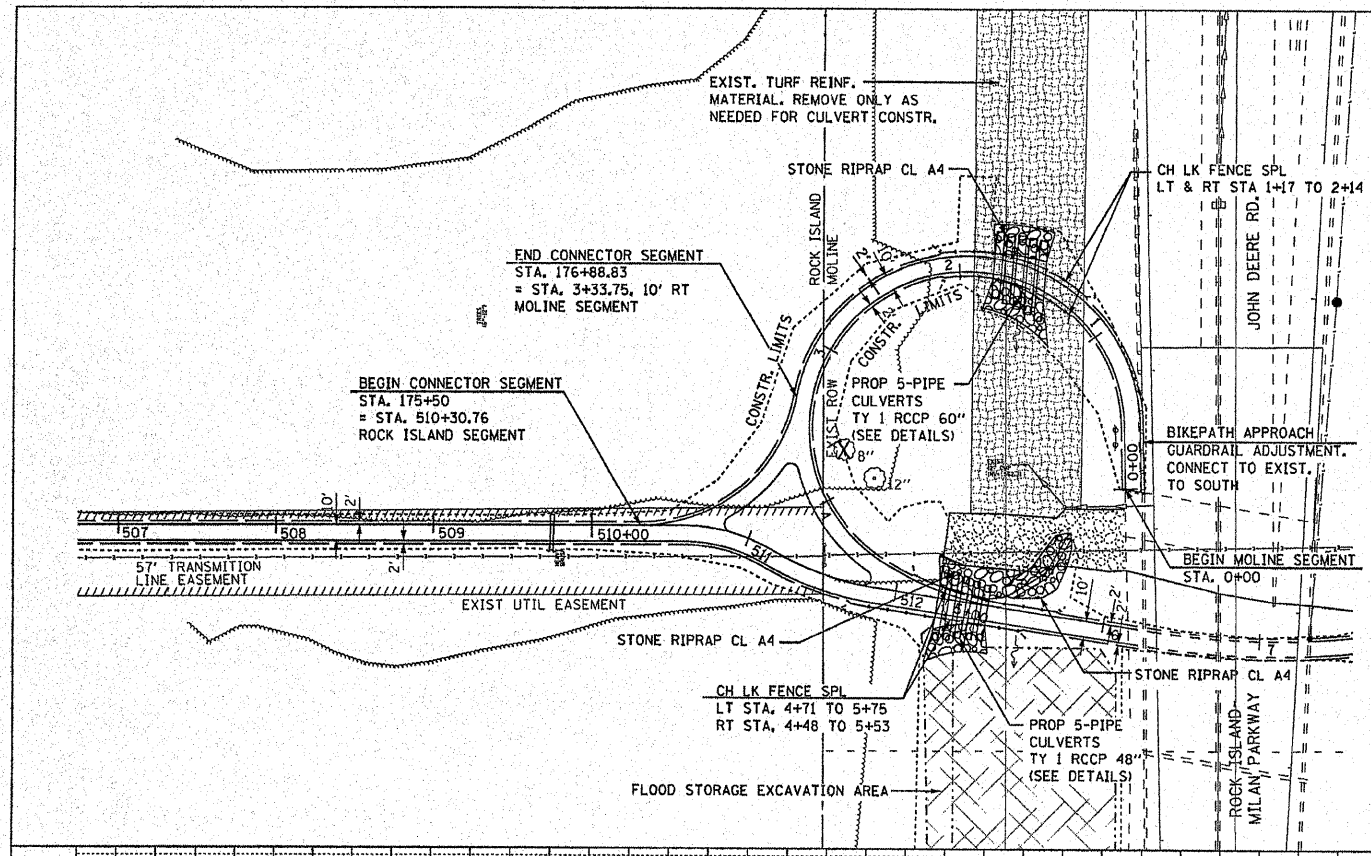
PROP. CURVE MOL-1
 PI STA. = 2+14.13
 $\Delta = 239^\circ 44' 14''$ (LT)
 $D = 57^\circ 17' 45''$
 $R = 100.00'$
 $T = 174.13'$
 $L = 418.42'$
 $E = 300.80'$
 P.C. STA. = 0+40.00
 P.T. STA. = 4+58.42

PROP. CURVE MOL-2
 PI STA. = 4+97.73
 $\Delta = 22^\circ 14' 22''$ (LT)
 $D = 28^\circ 38' 52''$
 $R = 200.00'$
 $T = 39.31'$
 $L = 77.63'$
 $E = 3.83'$
 P.C. STA. = 4+58.42
 P.T. STA. = 5+36.05

DATE	
BY	
REVISION	
NO.	
DATE	
BY	
REVISION	
NO.	
DATE	
BY	
REVISION	
NO.	
DATE	
BY	
REVISION	
NO.	
DATE	
BY	
REVISION	
NO.	
DATE	
BY	
REVISION	
NO.	

DATE	
BY	
REVISION	
NO.	
DATE	
BY	
REVISION	
NO.	
DATE	
BY	
REVISION	
NO.	
DATE	
BY	
REVISION	
NO.	
DATE	
BY	
REVISION	
NO.	

PLOT DATE: 04/25/14
 PLOT NAME: 06-00233-00-B7-13
 PLOT SCALE: 1"=40'
 USER NAME: J. BUSH



MOLINE SEGMENT MULTI-USE PATH STA 00 TO 6+00

CONNECTOR SEGMENT MULTI-USE PATH STA 175+00 TO 177+38.83