

E. 1/2, E. 1/2, SEC. 28, T. 29 N., R. 3 E., 4TH P.M.
WILLIAM S. MCFADDEN

F.A. RTE.	SECTION	COUNTY	TOTAL SHEETS	SHEET NO.
C.H. 393-00112-00-BR	JODAVIESS		42	5
STA. 22+00		TO STA. 27+50		
ILLINOIS FED. AID PROJECT				
CONTRACT NO. 85462				

ENTRANCES TO BE BUILT

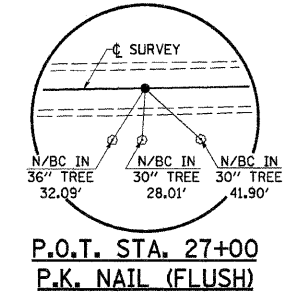
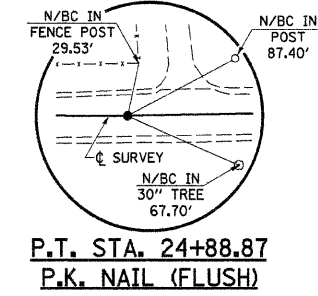
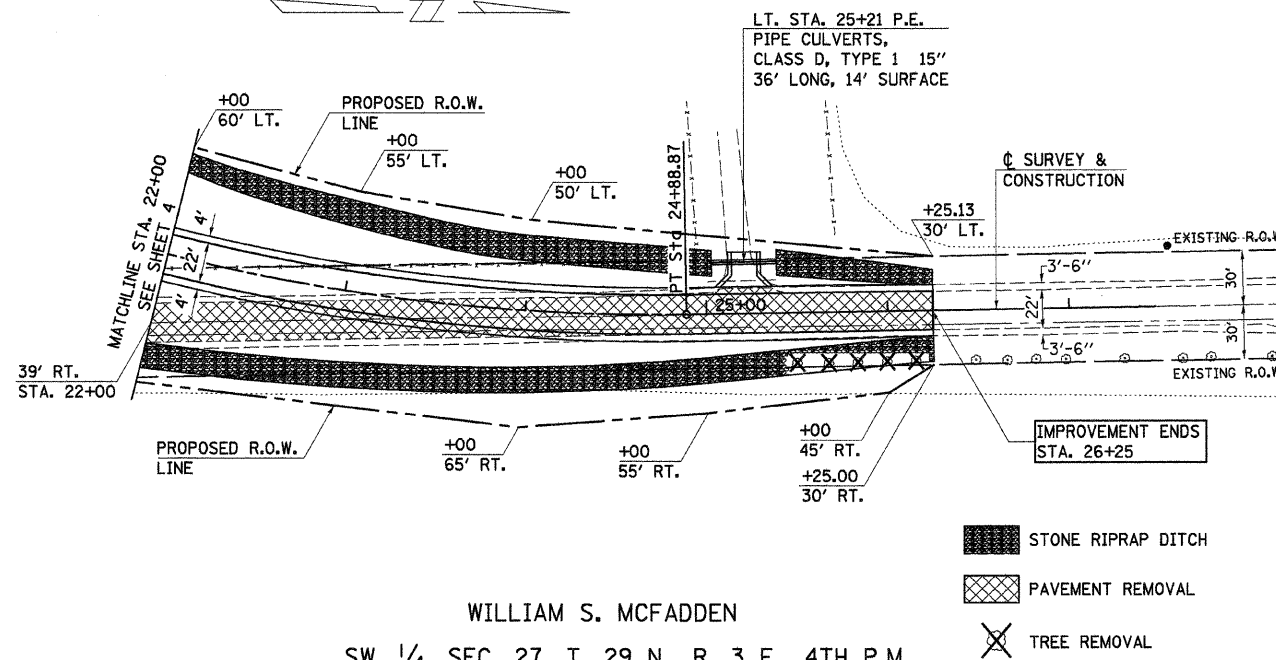
LT. STA. 25+21, P.E. -13.0%, 18' ROADBED
QUANTITIES INCLUDED IN THOSE LISTED

PIPES TO BE REMOVED

LT. STA. 25+21, 38' LONG
QUANTITIES INCLUDED IN "EARTH EXCAVATION".

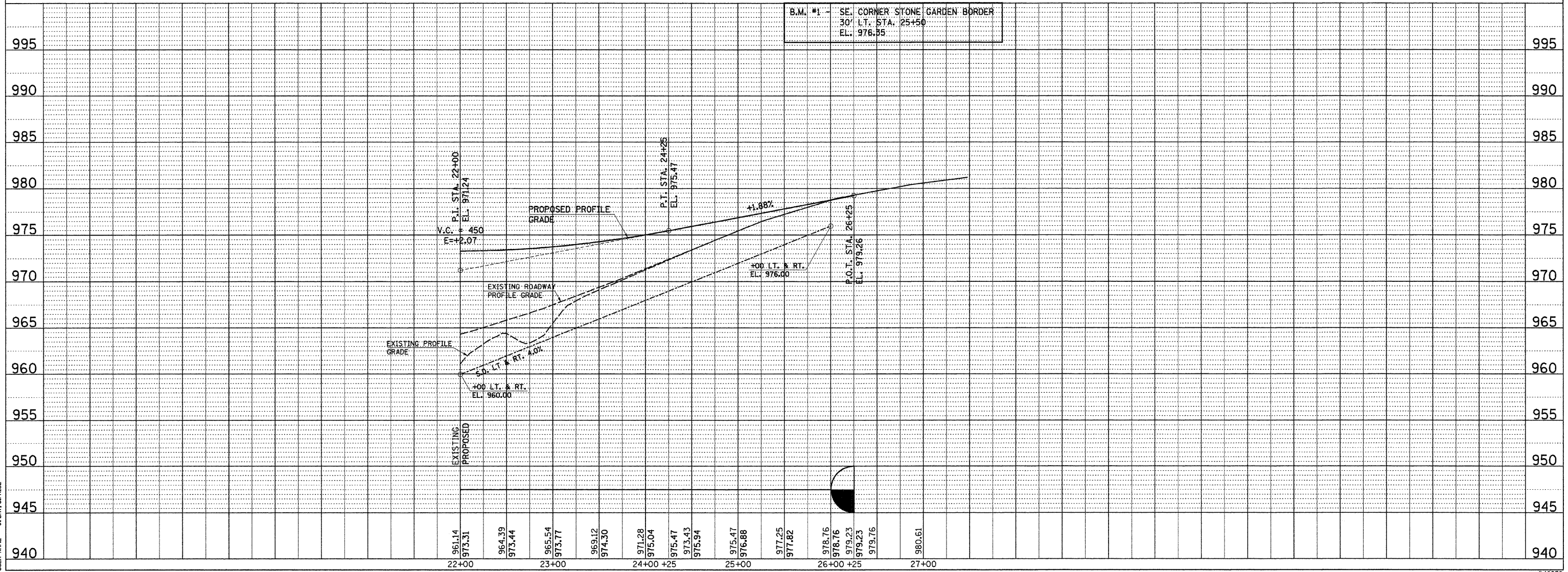
FOR FENCING SCHEDULES SEE SHEET 7.

PI STA. = 18+61.48
Δ = 91° 40' 46" (LT)
D = 5° 12' 31"
R = 1,100.00'
T = 1,132.73'
L = 1,760.12'
E = 478.95'
P.C. STA. = 7+28.75
P.T. STA. = 24+88.87
S.E. = 0.06 FT./FT.
TRANSITION
STA. 5+96.75 TO STA. 7+72.75
STA. 24+44.87 TO STA. 26+20.87



WILLIAM S. MCFADDEN
SW. 1/4, SEC. 27, T. 29 N., R. 3 E., 4TH P.M.

B.M. #1 - SE CORNER STONE GARDEN BORDER
30' LT. STA. 25+50
EL. 976.85



PLAN	DATE
BY	
NO.	

PROFILE	DATE
BY	
NO.	

DATE = 1/12/87
FILE NAME = 46859A.P3JDN
PLOT SCALE = VARIES
USER NAME = J. DRY, S.PRICE