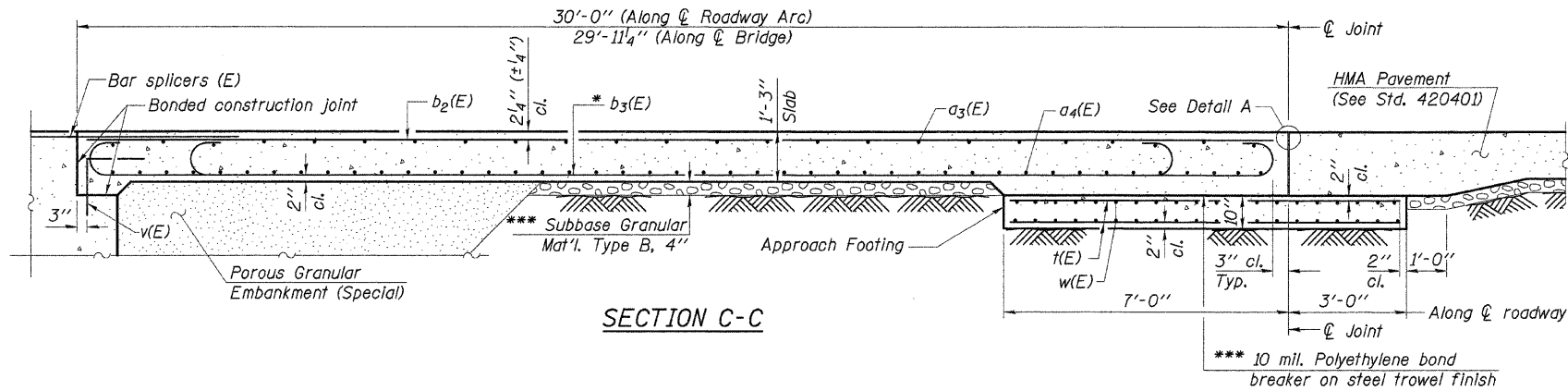
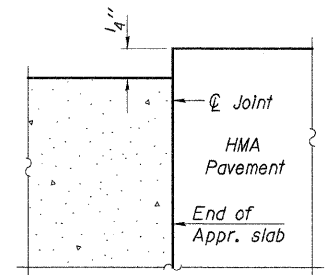
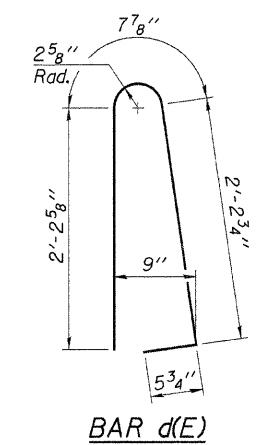


Notes:
 See sheet 8 of 19 for Detail A and View B-B.
 Approach slab and parapet concrete shall be paid for as Concrete Superstructure.
 Approach footing concrete shall be paid for as Concrete Structures.
 Reinforcement shall be paid for as Reinforcement Bars, Epoxy Coated.
 For v(E) bar details, see sheet 12 of 19.
 The approach footing maximum applied service bearing pressure (Qmax) = 2.0 ksf.
 For bar splicer details, see sheet 19 of 19.
 Cost of excavation for approach footing included with Concrete Structures.
 For Porous Granular Embankment (Special) and drainage treatment details, see sheet 2 of 19.
 See Sheet 12 of 19 for Parapet Joint Details.
 Slipforming of Parapet is not allowed.



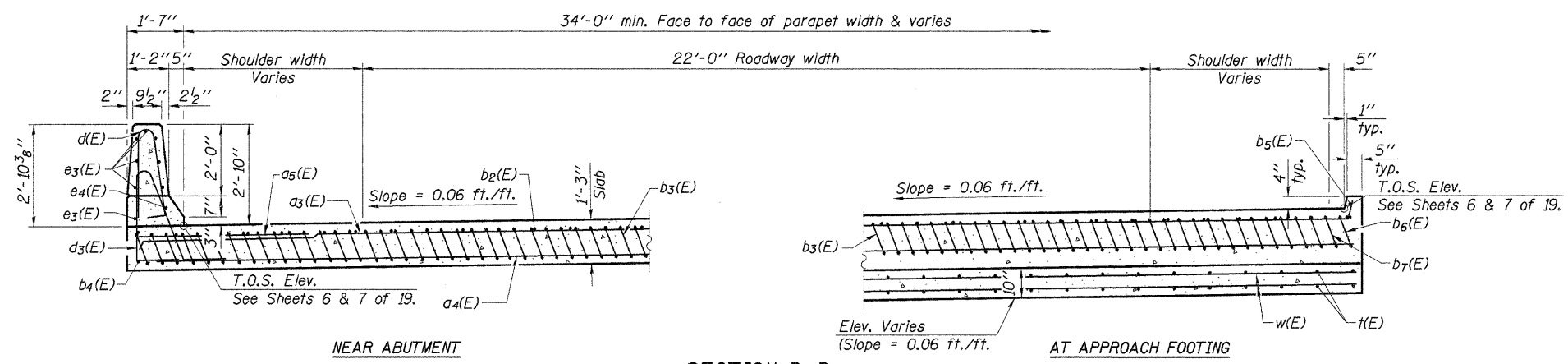
SECTION C-C



DETAIL A

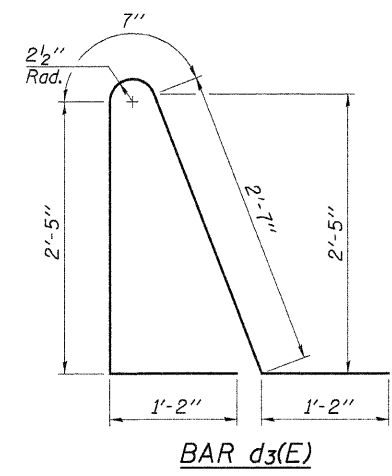
TWO APPROACHES
 BILL OF MATERIAL

Bar	No.	Size	Length	Shape
a3(E)	100	#4	19'-1"	—
a4(E)	92	#5	36'-6"	—
a5(E)	48	#6	6'-0"	—
b2(E)	56	#4	29'-8"	—
b3(E)	162	#9	29'-9"	—
b4(E)	4	#4	14'-8"	—
b5(E)	4	#4	15'-8"	—
b6(E)	2	#11	26'-9"	—
b7(E)	2	#11	26'-9"	—
b8(E)	8	#11	11'-3"	—
d(E)	68	#5	5'-7"	—
d3(E)	68	#5	7'-11"	—
e3(E)	32	#4	14'-8"	—
e4(E)	4	#8	14'-8"	—
t(E)	144	#4	9'-8"	—
w(E)	80	#5	35'-10"	—
Concrete Superstructure			Cu. Yd.	115.8
Concrete Structures			Cu. Yd.	22.0
Reinforcement Bars, Epoxy Coated			Pound	29,180
Bridge Deck Grooving			Sq. Yd.	218
Protective Coat			Sq. Yd.	263

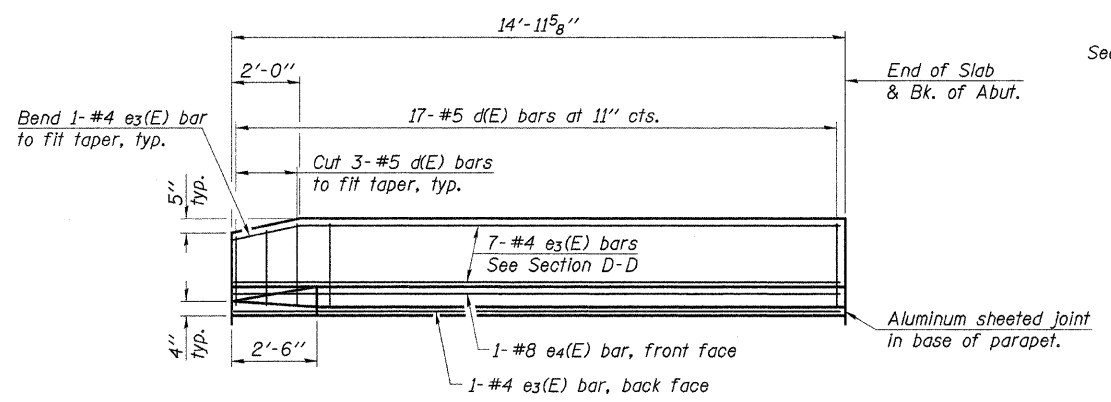


SECTION D-D

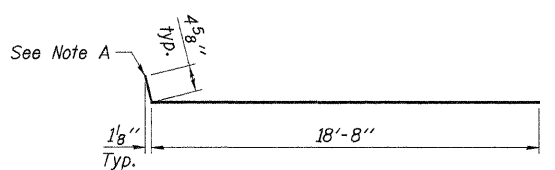
* Tilt #9 b3(E) & #11 b8(E) bars as required to maintain clearance. (See Plan for dimensions not shown)
 *** Cost Included with Concrete Superstructure.



BAR d3(E)

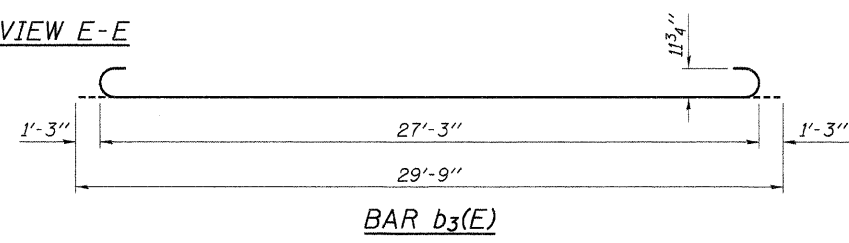


VIEW E-E

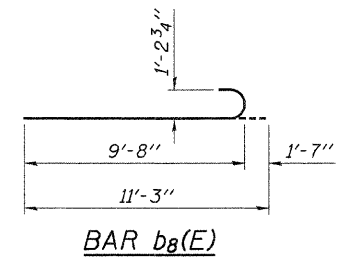


BAR a3(E)

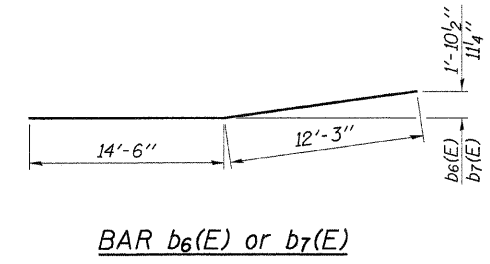
Note A: Turn Vertical Leg of a3(E) bars down into slab when placing within limits of parapet



BAR b3(E)



BAR b8(E)



BAR b6(E) or b7(E)

DESIGNED	A.R.K.
CHECKED	J.A.M.
DRAWN	S.A.P.
CHECKED	A.R.K. & J.A.M.

BA-0 10-31-08

BRIDGE APPROACH SLAB DETAILS

SECTION 93-00112-00-BR
 JO DAVIESS COUNTY
 COUNTY HIGHWAY 3
 STATION 18+74.60