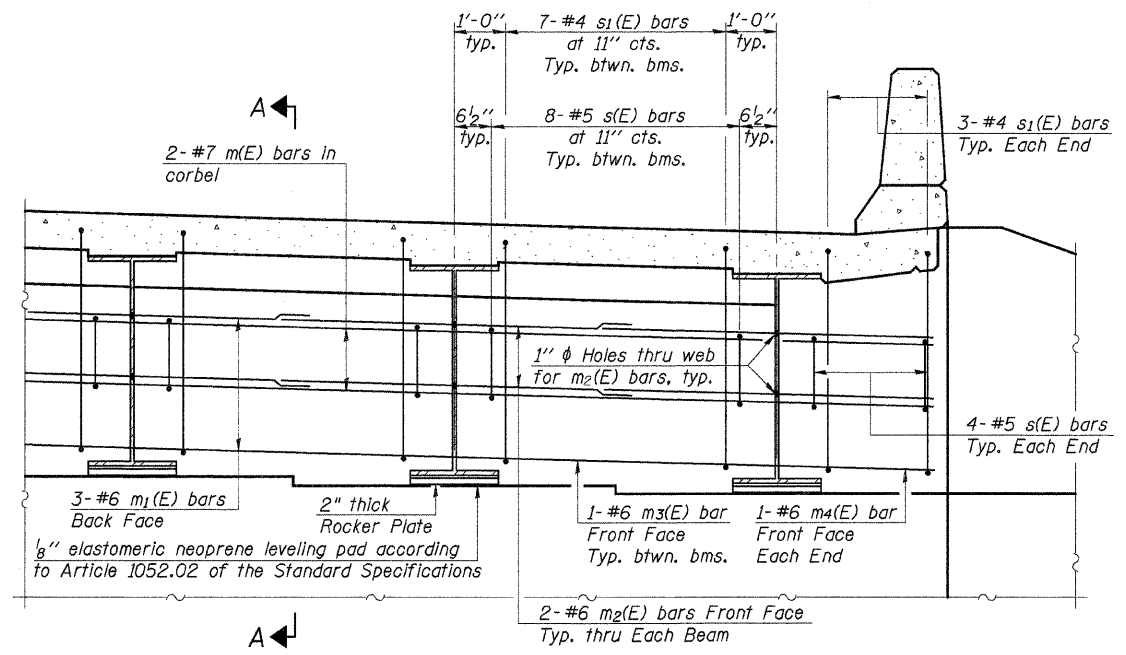


ROUTE NO.	SECTION	COUNTY	TOTAL SHEETS	SHEET NO.
C.H. 3	93-00112-00-BR	JO DAVIESS	42	20

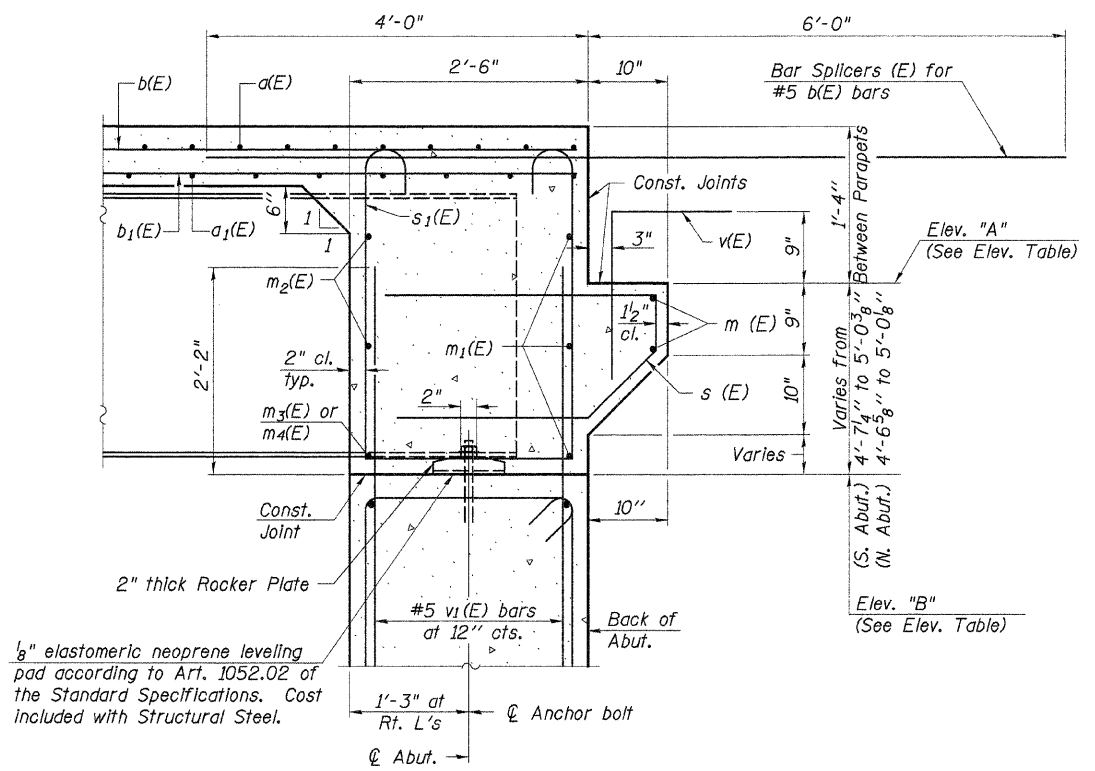
Sheet 11 of 19 CONTRACT NO. 85462



DIAPHRAGM ELEVATION AT ABUTMENT
(Looking South)

Notes:
 Reinforcement bars in diaphragm are billed with superstructure on sheet 12 of 19.
 Concrete in diaphragm is included with Concrete Superstructure on sheet 12 of 19.
 For details of bars s(E) & s1(E) see sheet 12 of 19.
 The s(E) and s1(E) bars shall be placed parallel to the beams. Spacing for these bars shall be at right angles to the beams.
 For details of Bar Splicers see sheet 19 of 19.

MIN. BAR LAP
 #6 bar = 2'-9"



SECTION A-A
 Dimensions at right angles to abutment.

ELEVATION TABLE

Location	Elev. "A"	Elev. "B"
W. End - S. Abut.	975.88	971.28
E. End - S. Abut.	978.07	973.04
W. End - N. Abut.	973.54	968.99
E. End - N. Abut.	975.80	970.79

DESIGNED	J.A.M.
CHECKED	A.R.K.
DRAWN	S.A.P.
CHECKED	A.R.K. & J.A.M.

SI-DS1 11-1-06

SUPERSTRUCTURE DETAILS

SECTION 93-00112-00-BR
 JO DAVIESS COUNTY
 COUNTY HIGHWAY 3
 STATION 18+74.60

4440 ASH GROVE SPRINGFIELD, IL 62711 (217) 793-8600 www.fehr-graham.com	FEHR-GRAHAM & ASSOCIATES, LLC ENGINEERING AND SCIENCE CONSULTANTS FAIRBURY, IL ROCKFORD, IL ROCKFORD, IL MORRIS, IL SPRINGFIELD, IL	JOB NO.: 46859 FILE: SUPER2.dgn DATE: 03/24/09
--	--	--