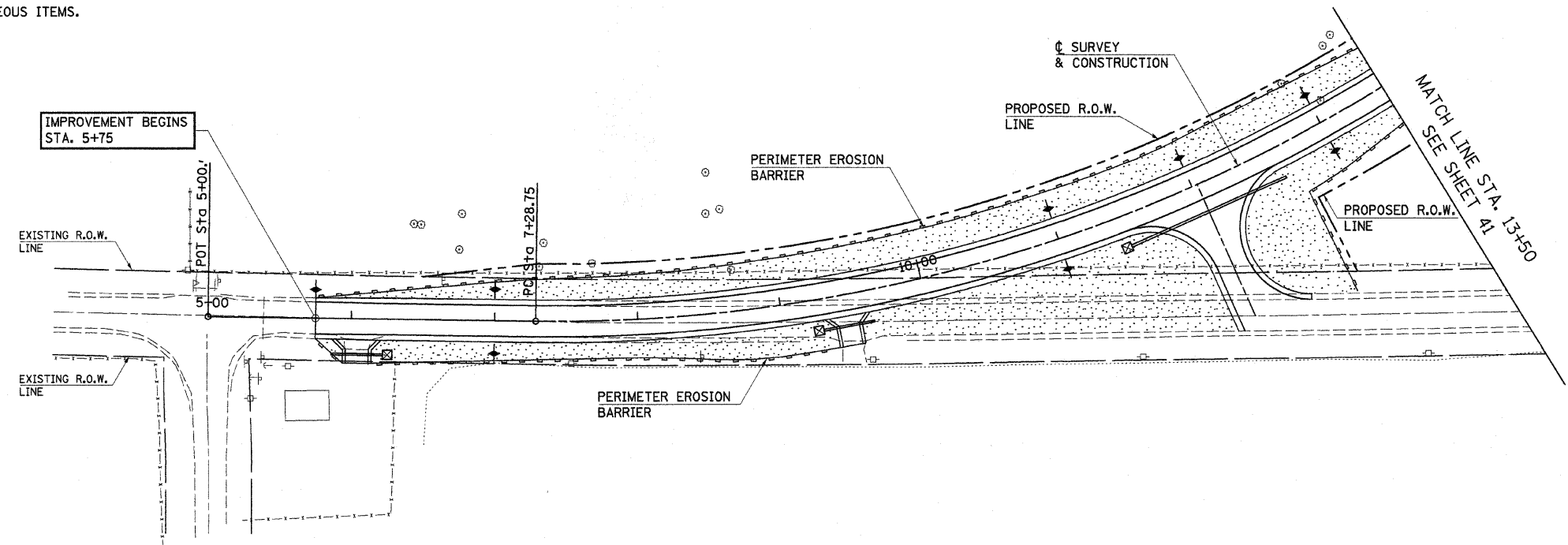


ROUTE NO.	SECTION	COUNTY	TOTAL SHEETS	SHEET NO.
C.H. 3	93-00112-00-BR	JoDAVIESS	42	40
ILLINOIS				

CONTRACT NO. 85462

**DESCRIPTION OF INTENDED SEQUENCE OF MAJOR CONSTRUCTION ACTIVITIES WHICH WILL DISTURB EARTH AND LEAD TO POSSIBLE EROSION FOR MAJOR PORTIONS OF THE CONSTRUCTION SITE:**

1. PLACEMENT OF PERIMETER EROSION CONTROL FENCE PRIOR TO THE COMMENCEMENT OF ANY ROAD OR BRIDGE WORK. SEE STD. 280001.
2. CONSTRUCTION OF THE REPLACEMENT STRUCTURE.
3. PLACEMENT OF ROADWAY EMBANKMENT TO RAISE THE ROADWAY TO THE PROPOSED GRADE.
4. REMOVAL OF EXISTING STRUCTURE
5. REGRADING OF EXISTING ROADWAY
6. DRAINAGE STRUCTURES, INCLUDING DITCHES, WILL BE INSTALLED BEFORE AND/OR DURING THE COMPLETION OF THE EMBANKMENT.
7. PLACEMENT AND MAINTENANCE OF TEMPORARY EROSION CONTROL.
8. PLACEMENT OF PERMANENT EROSION CONTROL.
9. REMOVAL AND PROPER CLEAN UP OF TEMPORARY EROSION CONTROL.
10. FINAL GRADING, PLACING AGGREGATE AND OTHER MISCELLANEOUS ITEMS.



TEMPORARY EROSION CONTROL:	
	PERIMETER EROSION BARRIER
	TEMPORARY DITCH CHECK
	INLET AND PIPE PROTECTION
PERMANENT EROSION CONTROL:	
	SEEDING CLASS 2, FERTILIZERS, & MULCH, METHOD 2
	STONE RIPRAP DITCH

**TEMPORARY DITCH CHECKS**

LT. STA. 5+75	= 1 EACH
LT. & RT. STA. 7+25	= 2 EACH
LT. & RT. STA. 11+00	= 2 EACH
LT. STA. 12+00	= 1 EACH
LT. & RT. STA. 13+00	= 2 EACH
LT. & RT. STA. 14+00	= 2 EACH
RT. STA. 14+25	= 1 EACH
RT. STA. 14+50	= 1 EACH
RT. STA. 14+75	= 1 EACH
RT. STA. 15+00	= 1 EACH
RT. STA. 20+00	= 1 EACH
LT. & RT. STA. 21+00	= 2 EACH
LT. STA. 21+50	= 1 EACH
LT. & RT. STA. 22+00	= 2 EACH
LT. & RT. STA. 22+50	= 2 EACH
LT. & RT. STA. 23+00	= 2 EACH
LT. & RT. STA. 23+50	= 2 EACH
LT. & RT. STA. 24+00	= 2 EACH
LT. & RT. STA. 24+50	= 2 EACH
LT. & RT. STA. 25+00	= 2 EACH
LT. & RT. STA. 25+50	= 2 EACH
LT. & RT. STA. 26+00	= 2 EACH
<b>TOTAL</b>	<b>= 36 EACH</b>

**INLET AND PIPE PROTECTION**

RT. STA. 6+22	= 1 EACH
RT. STA. 9+27	= 1 EACH
RT. STA. 11+46	= 1 EACH
RT. STA. 15+36	= 1 EACH
RT. STA. 15+73	= 1 EACH
LT. STA. 25+39	= 1 EACH
<b>TOTAL</b>	<b>= 6 EACH</b>

**BILL OF MATERIAL**

ITEM	UNIT	QUANTITY
TEMPORARY EROSION CONTROL SEEDING	POUND	700
TEMPORARY DITCH CHECKS	EACH	36
PERIMETER EROSION BARRIER	FOOT	4980
INLET AND PIPE PROTECTION	EACH	6

THE ABOVE QUANTITIES ARE ESTIMATES ONLY. ACTUAL QUANTITIES FOR EROSION CONTROL WILL BE DETERMINED BY THE ENGINEER IN THE FIELD AND THERE WILL BE NO ADJUSTMENT IN ANY PRICE DUE TO A CHANGE IN PLAN QUANTITY.

**EROSION CONTROL PLAN**

SECTION 93-00112-00-BR  
JoDAVIESS COUNTY  
COUNTY HIGHWAY 3  
STATION 18+74.60

4440 ASH GROVE  
SPRINGFIELD, IL 62711  
(217) 793-8600  
www.fehr-graham.com

**FEHR-GRAHAM & ASSOCIATES, LLC**  
ENGINEERING AND SCIENCE CONSULTANTS  
PROFESSIONAL ENGINEERS AND ARCHITECTS  
REGISTERED IN ILLINOIS

DRAWN: S.A.P.  
DATE: 07/16/08

CHECKED: G.J.C.  
DATE: 01/12/09

JOB NO.: 46859  
FILE: EROSION.DGN  
DATE: 03/24/09