
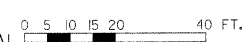
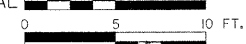


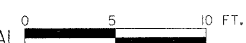
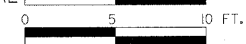
STATE OF ILLINOIS DEPARTMENT OF TRANSPORTATION PLANS FOR PROPOSED LOCAL AGENCY IMPROVEMENT

FEDERAL-AID HBP PROJECT HIGHWAY BRIDGE PROGRAM TR 257 SECTION 07-17137-00-BR/ BUREAU COUNTY PROJECT BROS-0011(071) JOB NO. C-93-033-09 CONTRACT NO. 87381 2009

NET LENGTH 797.5 FT. = 0.15 MILES
TOTAL LENGTH 1200 FT. = 0.23 MILES

LOCATION MAP SCALE 

PLAN & PROFILE
HORIZONTAL 
VERTICAL 

CROSS SECTIONS
HORIZONTAL 
VERTICAL 
RANGE 6 EAST OF 4th P.M.



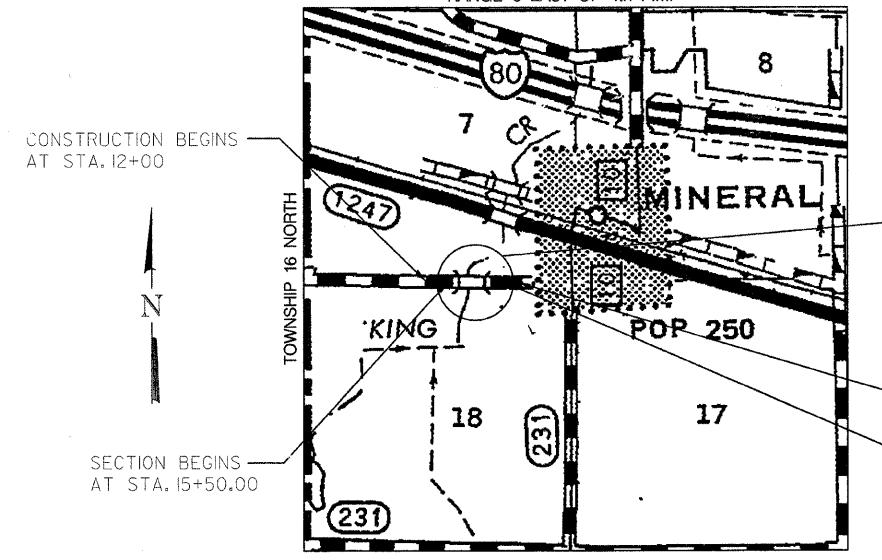
LOCATION OF SECTION INDICATED THUS: 

INDEX OF SHEETS

- 1 = COVER SHEET
- 2 = SUMMARY OF QUANTITIES
- 3 = GENERAL NOTES AND SCHEDULES
- 4 = TYPICAL SECTIONS
- 5-7 = PLAN & PROFILE
- 8 = ALIGNMENT & CONTROL POINT DETAILS
- 9-II = EROSION CONTROL PLAN
- 12 = GENERAL PLAN AND ELEVATION
- 13 = RIPRAP AND PILE LAYOUT
- 14 = 27"x48" PPC DECK BEAM
- 15 = 27"x48" PPC DECK BEAM DETAILS
- 16 = WEST ABUTMENT DETAILS
- 17 = EAST ABUTMENT DETAILS
- 18 = STEEL RAILING, TYPE SM DETAILS
- 19 = METAL SHELL PILE DETAILS
- 20 = SOIL BORINGS
- 21-27 = CROSS SECTIONS

STANDARDS

- 000001-05 STANDARD SYMBOLS, ABBREVIATIONS, AND PATTERNS
- 280001-04 TEMPORARY EROSION CONTROL SYSTEMS
- 515001-03 NAME PLATE FOR BRIDGES
- 542401-01 METAL END SECTION FOR PIPE CULVERTS
- 601001-03 SUB-SURFACE DRAINS
- 60101-01 CONCRETE HEADWALL FOR PIPE DRAIN
- 701901-01 TRAFFIC CONTROL DEVICES
- 720011-01 METAL POSTS FOR SIGNS, MARKERS & DELINEATORS
- B.L.R. 21-8 TYPICAL APPLICATION OF TRAFFIC CONTROL DEVICES FOR CONSTRUCTION ON RURAL LOCAL HIGHWAYS
- B.L.R. 22-6 TYPICAL APPLICATION OF TRAFFIC CONTROL DEVICES FOR CONSTRUCTION ON RURAL LOCAL HIGHWAYS (TWO-LANE TWO WAY RURAL TRAFFIC) (ROAD CLOSED TO THRU TRAFFIC)



LOCATION MAP

PROPOSED STRUCTURE (S.N. 006-4247)
A SINGLE SPAN (1 @ 66'-8") PRECAST PRESTRESSED CONCRETE DECK BEAM STRUCTURE ON SPILL THRU PILE BENT ABUTMENTS @ STA. 20+10, SKEWED 0°.

CONSTRUCTION ENDS AT STA. 24+00
SECTION ENDS AT STA. 23+47.5

NAME AND ADDRESS OF UTILITIES	TYPE
Ameren IP Attn: Ms. Kathy Cromwell 1450 Red Adams Road Kewanee, IL 61443 (309) 852-2963	ELECTRIC
AT&T Attn: Mr. Keith Heimlick (815) 774-6762	TELEPHONE
Henry County Telephone Attn: Mr. Matt Storm 111 East 1st St. Geneseo, IL 61254 (309) 944-2103	TELEPHONE
Mediacom Attn: Mr. John Smith 3900 26th Ave. Moline, IL 61265 (309) 314-0902	CABLE
Verizon North, Inc. Attn: Mr. Terry Spurgeon 111 S. Main St. Kewanee, IL 61443 (309) 853-6293	TELEPHONE

ATTENTION CONTRACTORS
THE ILLINOIS DEPARTMENT OF TRANSPORTATION
BUREAU OF MATERIALS AND PHYSICAL RESEARCH,
"PROJECT PROCEDURES GUIDE" IS APPLICABLE
TO THIS PROJECT.

STATE OF ILLINOIS DEPARTMENT OF TRANSPORTATION DIVISION OF HIGHWAYS	
APPROVED	July 2, 2009 <i>John A. [Signature]</i> BUREAU COUNTY ENGINEER
PASSED	07-07-09 2009 <i>Harold C. [Signature]</i> DISTRICT 3 ENGINEER OF LOCAL ROADS & STREETS
RELEASING FOR BID BASED ON LIMITED REVIEW	07-07-09 2009 <i>George E. [Signature]</i> DEPUTY DIRECTOR OF HIGHWAYS, REGION 2 ENGINEER



Brian K. Converse
DATE: 7/1/09
EXPIRES 11/30/09

PLANS PREPARED BY:
WILLET, HOFMANN & ASSOCIATES, INC.
CONSULTING ENGINEERS
Land Surveying - Transportation - Structural
Environmental - Architecture
800 East Second Street, Dixon, Illinois 61021
Phone 815.284.3381 Fax 815.284.3385
Design Firm #184-000919
www.willett-hofmann.com
WHA # 1115D08

HIGHWAY CLASSIFICATION: LOCAL ROAD (NON-URBAN)
DESIGN SPEED: 30
ADT = 80

CONTRACT NO. 87381