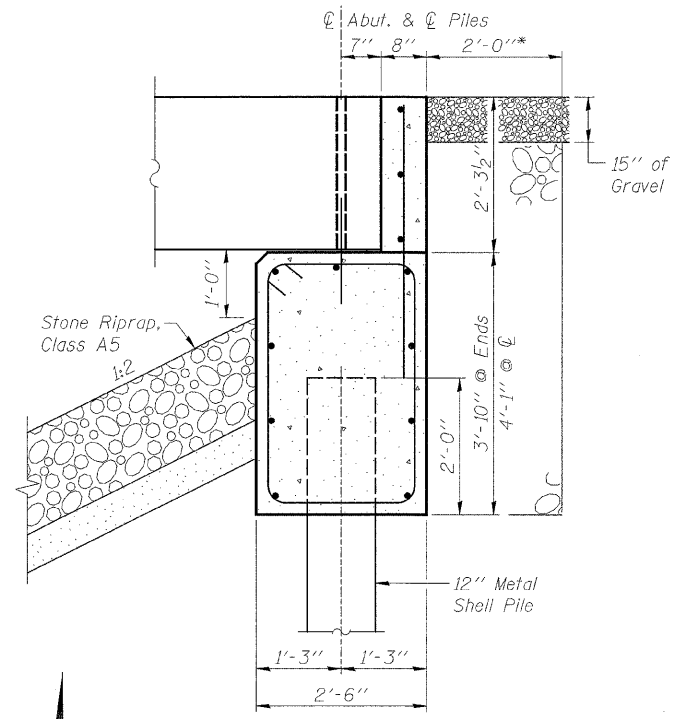


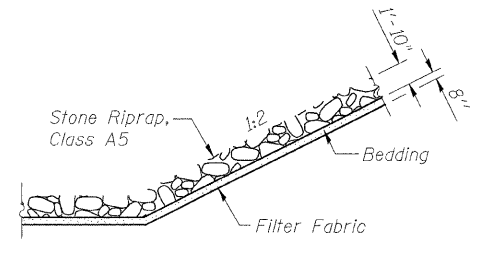
PLAN VIEW

BILL OF MATERIAL

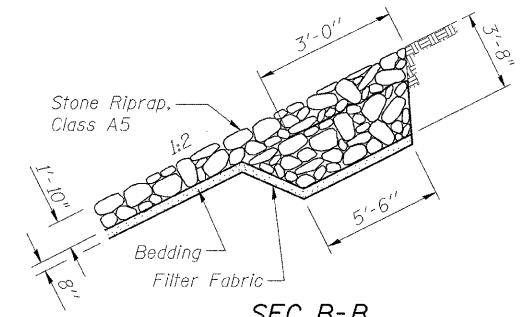
Item	Unit	Quantity
Stone Riprap, Class A5	Ton	1,490



SECTION THRU ABUTMENT



SEC A-A



SEC B-B

STONE RIPRAP ANCHOR DETAILS

RIPRAP AND PILE LAYOUT
 TR 257 (N. 1600 AVE.) OVER KING CREEK
 STA. 20+10 (S.N. 006-4247)
 SECTION 07-17137-00-BR
 MINERAL ROAD DISTRICT
 BUREAU COUNTY
 WHA # 1115D08

T.R. RTE.	SECTION	COUNTY	TOTAL SHEETS	SHEET NO.
257	07-17137-00-BR	BUREAU	27	13
CONTRACT NO. 87381				
FED. ROAD DIST. NO. 1 ILLINOIS FED. AID PROJECT BROS-0011071				

FILE NAME = s:\Struct\1115D08\Drawings\1115Riprap.dgn