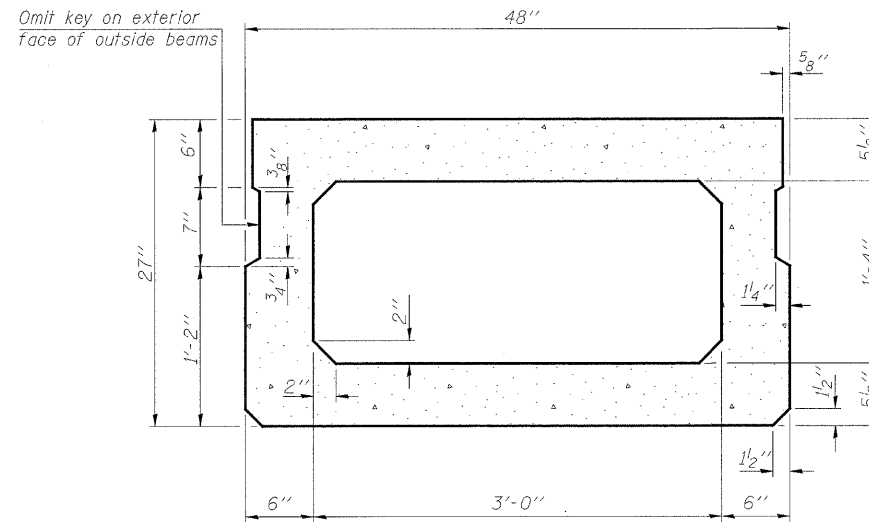
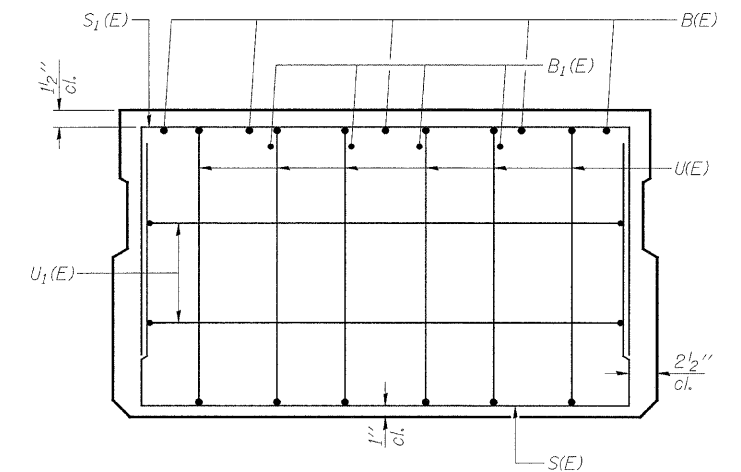


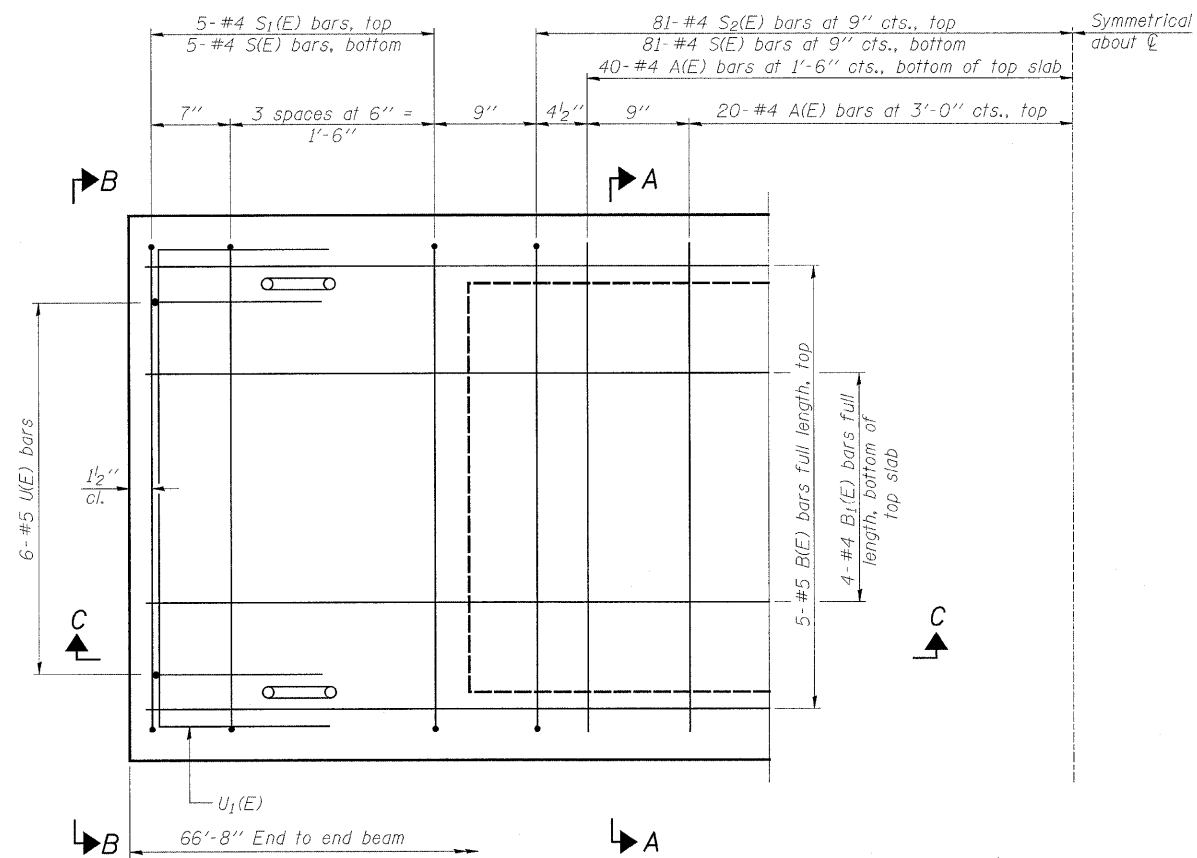
SECTION C-C



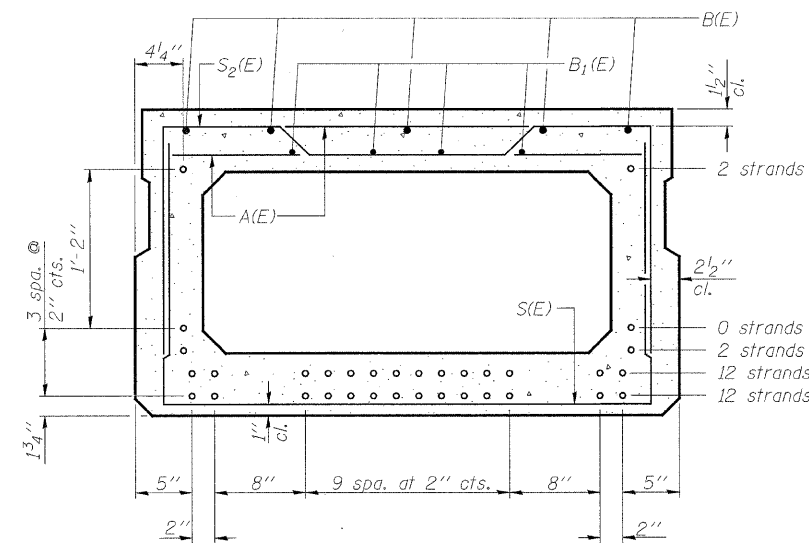
SECTION A-A
(Showing dimensions)



VIEW B-B



PLAN VIEW



SECTION A-A

(Showing reinforcement and permissible strand locations)

Note: Place the number of strands specified in each row symmetrically about the centerline of beam in the permissible strand locations shown.

BAR LIST
ONE BEAM ONLY
(For information only)

Bar	No.	Size	Length	Shape
A(E)	60	#4	3'-7"	—
B(E)	5	#5	66'-5"	—
B1(E)	4	#4	66'-5"	—
S(E)	86	#4	7'-5"	┌┐
S1(E)	10	#4	6'-11"	┌┐
S2(E)	81	#4	7'-2"	┌┐
U(E)	12	#5	4'-6"	┌┐
U1(E)	4	#4	6'-0"	┌┐

Note: See sheet 4 of 9 for additional details and Bill of Material.

Note: Spacing of S(E) and S2(E) bars may be adjusted up to 4" in the immediate area of the transverse tie diaphragms to miss the block outs for the transverse ties.

27" X 48" PPC DECK BEAM
TR 257 (N. 1600 AVE.) OVER KING CREEK
STA. 20+10 (S.N. 006-4247)
SECTION 07-17137-00-BR
MINERAL ROAD DISTRICT
BUREAU COUNTY
WHA # 1115D08

STRUCTURAL SHEET NO. 3 OF 9 SHEETS	T.R. RTE.	SECTION	COUNTY	TOTAL SHEETS	SHEET NO.
	257	07-17137-00-BR	BUREAU	27	14
	CONTRACT NO. 87381				
FED. ROAD DIST. NO. 7 ILLINOIS FED. AID PROJECT BROS-0011071)					