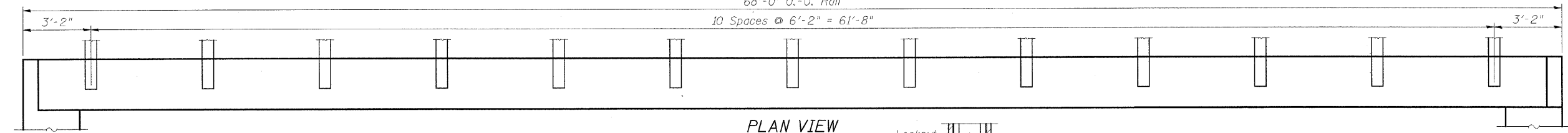
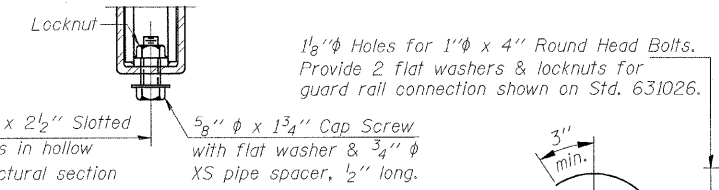


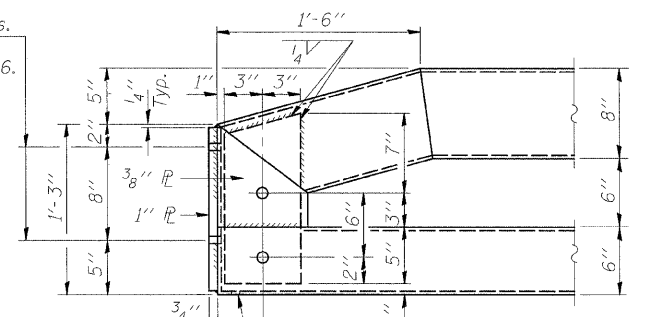
68'-0" O.-O. Rail
10 Spaces @ 6'-2" = 61'-8"



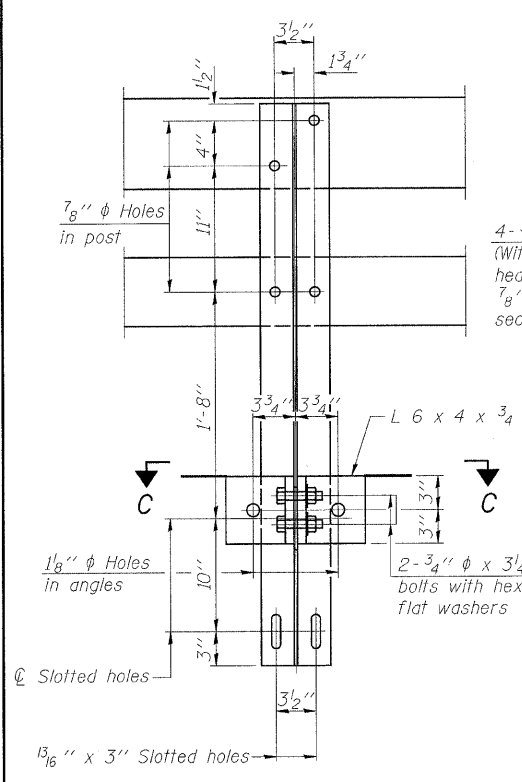
PLAN VIEW



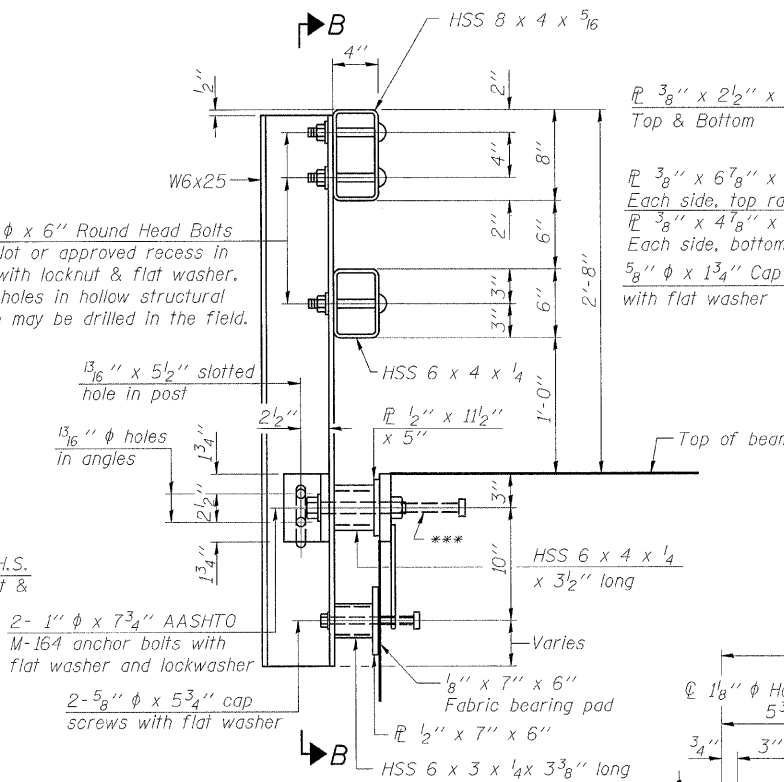
RAIL SPLICE CONNECTION AT EXPANSION JT.



END OF RAIL DETAILS

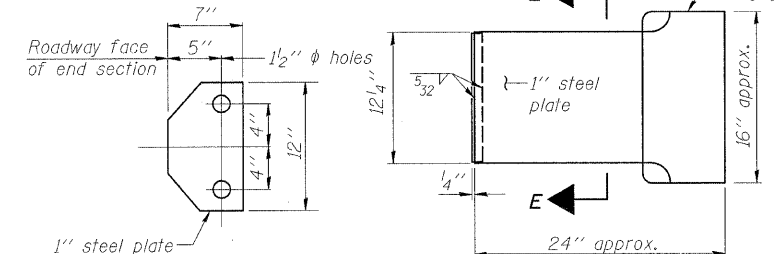


SECTION B-B



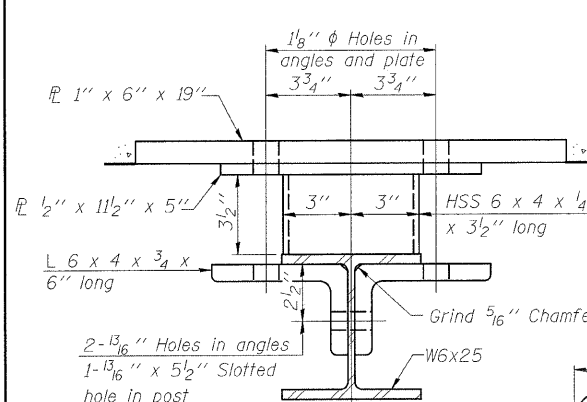
SECTION AT RAIL POST

SECTION AT RAIL SPLICE

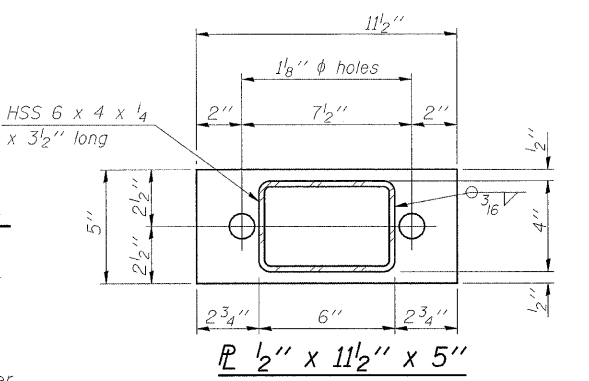


SECTION E-E

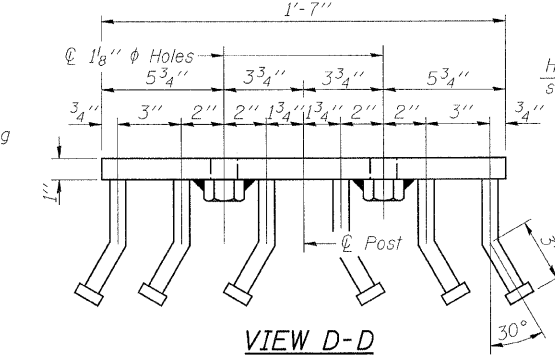
****CURLED END SECTION DETAILS (4 Required)



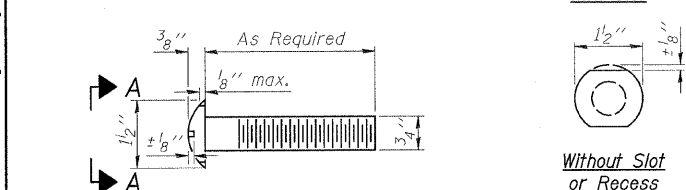
SECTION C-C



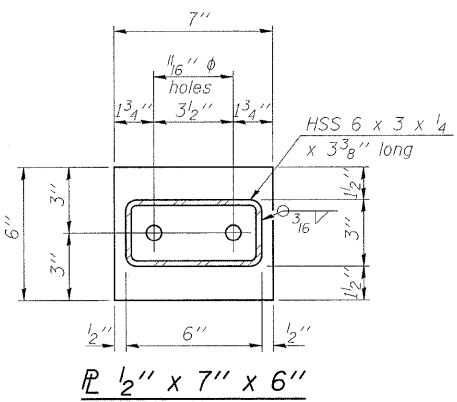
VIEW D-D



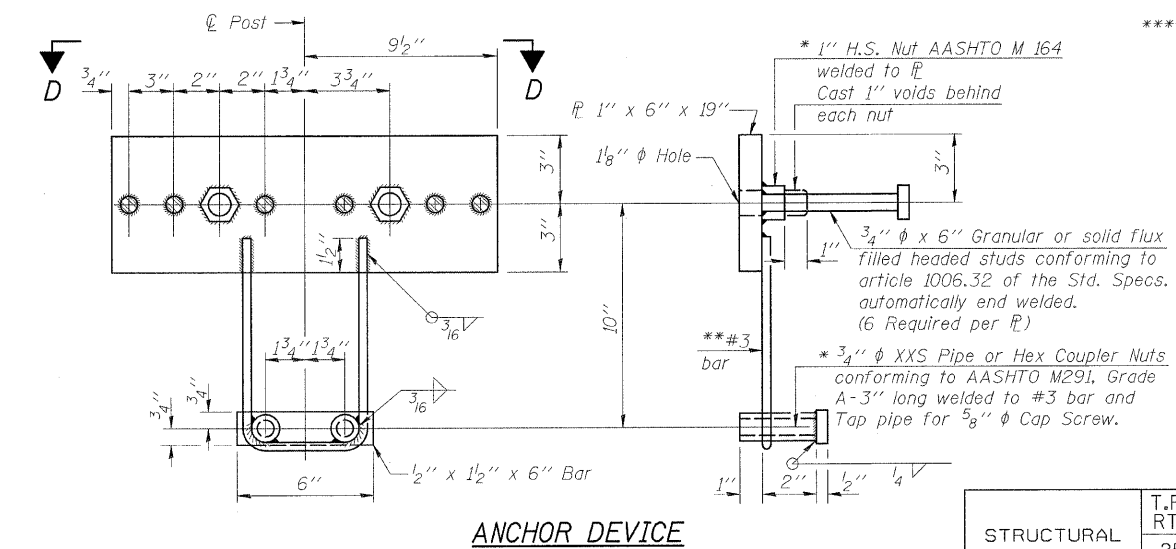
PLAN-BOTT. SPLICE P TYPICAL



DETAIL OF 3/4" ϕ ROUND HEAD BOLT VIEW A-A



SECTION AT RAIL SPLICE



ANCHOR DEVICE

NOTES:
All field drilled holes shall be coated with an approved zinc rich paint before erection.
All steel rail members shall be galvanized according to Article 509.05 of the Standard Specifications.

*** Whenever the lower insert assemblies interfere with strand locations, the #3 bars shall be cut and adjusted in order to allow raising or lowering of the lower inserts. Maximum adjustment not to exceed 1/2".

**** The studs of the anchor devices shall be placed below the top reinforcement bars and the outermost longitudinal reinforcement bar shall be placed directly above the studs of the rail post anchor device.

**** Cost of curled end sections shall be considered incidental to Steel Railing, Type SM.

BILL OF MATERIAL

Item	Unit	Quantity
Steel Railing, Type SM	Foot	136

STEEL RAILING, TYPE SM DETAILS
TR 257 (N. 1600 AVE.) OVER KING CREEK
STA. 20+10 (S.N. 006-4247)
SECTION 07-17137-00-BR
MINERAL ROAD DISTRICT
BUREAU COUNTY
WHA # 1115D08

STRUCTURAL SHEET NO. 7 OF 9 SHEETS	T.R. RTE.	SECTION	COUNTY	TOTAL SHEETS	SHEET NO.
	257	07-17137-00-BR	BUREAU	27	18
CONTRACT NO. 87381					
FED. ROAD DIST. NO. 7 ILLINOIS FED. AID PROJECT BROS-0011(071)					

*Threaded areas shall be plugged or blocked off during casting of beam. Galvanized after fabrication.

FILE NAME = s:\Struct\1115D08\Drawings\1115D08.dgn