

STAGE 4

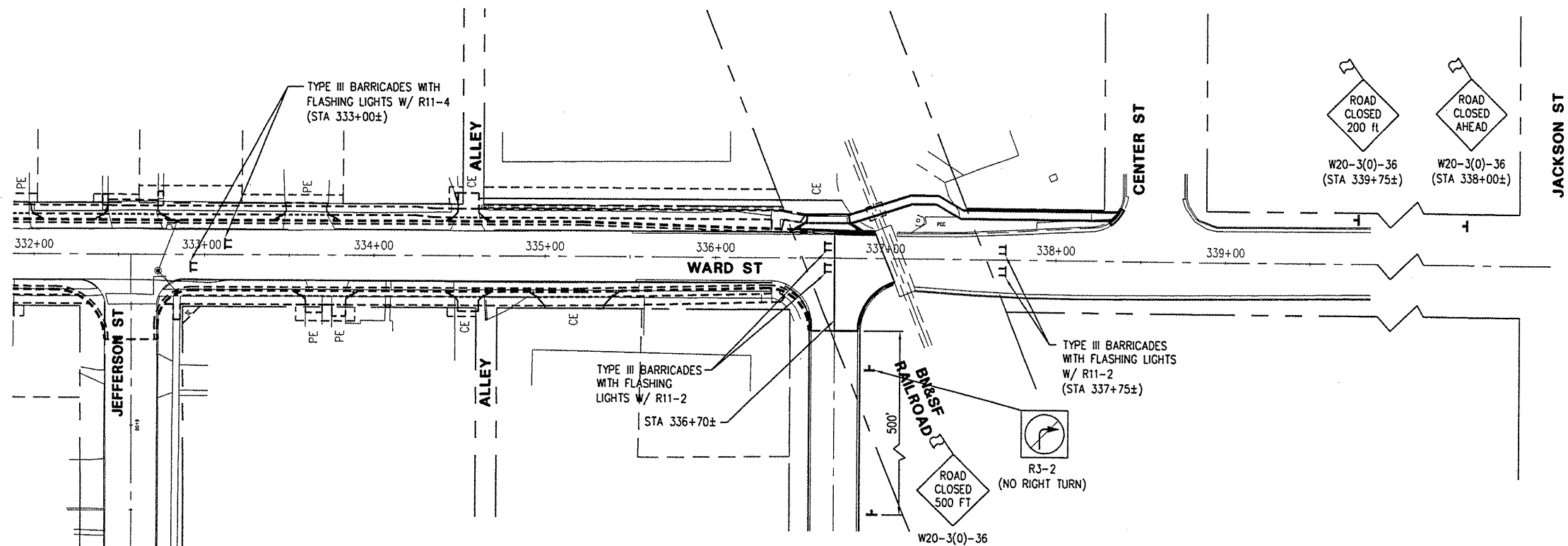
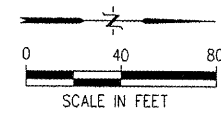
CONSTRUCTION

1. REMOVE EXISTING PAVEMENT AND OTHER ITEMS INDICATED.
2. COORDINATE WORK WITHIN THE RAILROAD RIGHT-OF-WAY WITH THE BURLINGTON NORTHERN-SANTA FE RAILWAY COMPANY AS NECESSARY.
3. CONSTRUCT CURB AND GUTTER AND PAVEMENT.
4. SIDEWALK IMPROVEMENTS CAN BE COMPLETED NOW OR AFTER THE ROAD HAS BEEN OPENED TO TRAFFIC.

TRAFFIC

- A. CONSTRUCT IMPROVEMENTS FROM STA. 336+70 TO CENTER STREET WHILE CLOSING WARD STREET FROM STA. 336+70 TO STA. 337+75 TO ALL TRAFFIC. WARD STREET SHALL BE CLOSED TO THRU TRAFFIC FROM STA. 333+00 TO STA. 336+70. TWO-LANE, 2-WAY TRAFFIC SHALL BE MAINTAINED OUTSIDE THESE LIMITS.
- B. WESTBOUND TRAFFIC ON WASHINGTON STREET SHALL BE ALLOWED TO TURN SOUTH ONLY ONTO WARD STREET.

STAGE 4
 STA 336+70 TO NORTH END



WARD STREET IMPROVEMENTS - STAGE 4
CONSTRUCTION STAGING PLAN
 CITY OF MACOMB

SOUTH WARD ST.
 FILE NAME: \\MACOMB\WARDST\WARD-ST-2007-STAGING FIELD BOOK No: 2257 JOB NUMBER: 03-28-09-089
 MACOMB, ILLINOIS

NO.	REVISIONS	DATE

PLOTTING SCALE:	1" = 40'
DRAWN BY:	JAH
CHECKED BY:	JAH
DATE:	MARCH 2009