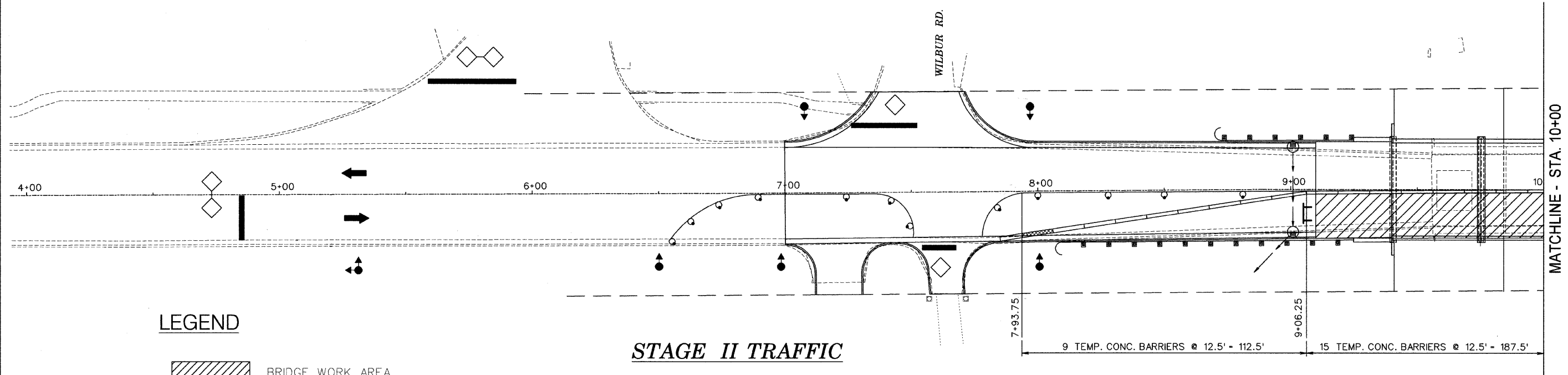
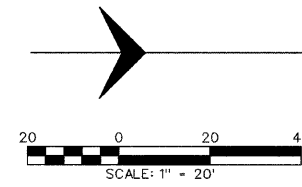
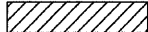

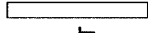






ROUTE NO.	SECTION	COUNTY	TOTAL SHEETS	SHEET NO.
N. LINCOLN AVE.	07-25932-00-BR	CHAMPAIGN	50	10
STA. TO STA.		F.H.W.A. REG. ILLINOIS PROJECT		



STAGE II TRAFFIC

LEGEND

-  BRIDGE WORK AREA
-  IMPACT ATTENUATOR
-  TEMP. CONCRETE BARRIER
-  TYPE III BARRICADE
-  DRUM WITH STEADY BURNING LIGHT
-  INDUCTION LOOP DETECTOR
-  TRAFFIC SIGNAL

SUGGESTED STAGE CONSTRUCTION SEQUENCE

STAGE II

1. ERECT TRAFFIC CONTROL FOR STAGE II.
2. REMOVE EXISTING BRIDGE AND PAVEMENT RT.
3. CONSTRUCT PROPOSED BRIDGE, BASE COURSE STA. 7+00 RT TO STA. 9+10.09 RT AND STA. 10+86.35 TO STA. 12+62. CONSTRUCT FIELD ENTRANCE AND TEMPORARY RAMPS.
4. CONSTRUCT PROPOSED GUARDRAIL & TERMINALS RT.

FINAL

1. REMOVE ALL STAGE TRAFFIC CONTROL AND RE-ESTABLISH NORMAL TRAFFIC PATTERNS
2. COMPLETE HOT-MIX ASPHALT SURFACE REMOVAL-BUTT JOINT, HMA SHOULDERS AND SURFACE COURSE UNDER TRAFFIC WITH FLAGGERS
3. FINAL STRIPING, SEEDING, AND MISC. CLEANUP

GENERAL NOTES

1. THIS TRAFFIC CONTROL DETAIL SHALL BE USED IN CONJUNCTION WITH STANDARD 701321.
2. EXISTING PAVEMENT MARKING THAT CONFLICT WITH THE REVISED STAGE TRAFFIC PATTERNS DURING ALL PHASES OF STAGE CONSTRUCTION SHALL BE REMOVED AS SPECIFIED IN SECTION 783 OF THE STANDARD SPECIFICATIONS AND PAID FOR AS "PAVEMENT MARKING REMOVAL".
3. THE CONTRACTOR SHALL MAINTAIN ACCESS TO ALL PRIVATE AND COMMERCIAL PROPERTIES DURING ALL PHASES OF CONSTRUCTION.
4. EACH DETECTOR LOOP SHALL BE CONNECTED TO A SEPARATE DETECTOR AMPLIFIER.

STAGE II TRAFFIC CONTROL PLAN
SECTION: 07-25932-00-BR
CHAMPAIGN COUNTY
Q STATION 10+00