

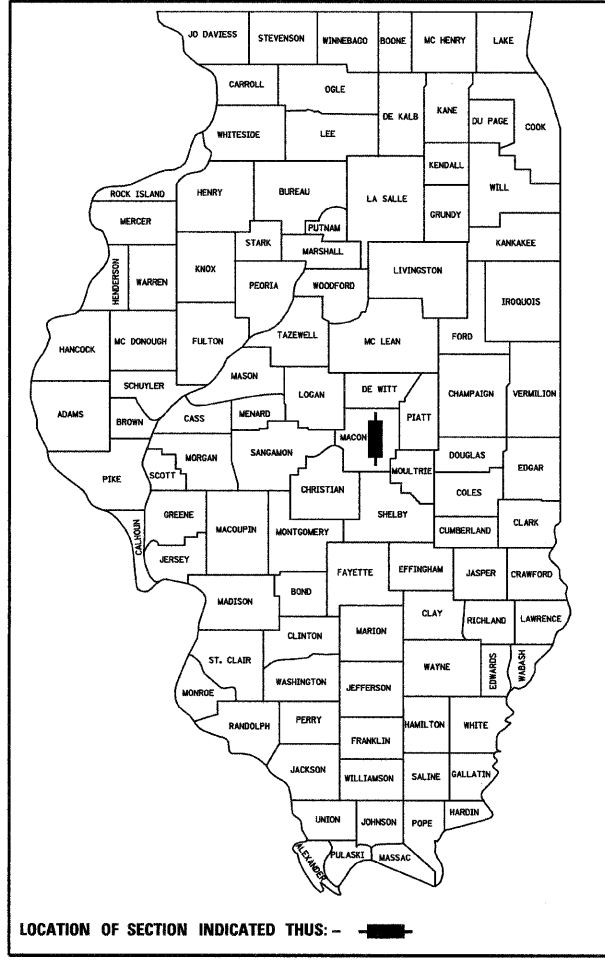
F.A. RTE.	SECTION	COUNTY	TOTAL SHEETS	SHEET NO.
	06-00189-00-LS	MACON	7	1

CONTRACT NO. 95590

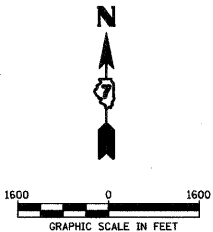
STATE OF ILLINOIS
DEPARTMENT OF TRANSPORTATION

PROPOSED PLANS FOR PROGRESS CITY LANDSCAPING

JOB. NO. C-97-103-09
PROJECT NO. ARA-00D7(036)
SEC. 06-00189-03-LS
MACON COUNTY



PROJECT LOCATION
SECTION 29 AND SECTION 32
T 17N, R 3 E, 3RD PM



Patrick P. Wilson
6/04/09
expires 11/30/09

HOMER L. CHASTAIN & ASSOCIATES, LLP
CONSULTING ENGINEERS
DECATUR (317) 422-8544
CHICAGO (773) 714-0050
ROCKFORD (815) 489-0050
184-001597

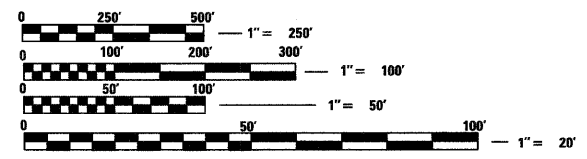
STATE OF ILLINOIS DEPARTMENT OF TRANSPORTATION	
Approved	<i>June 4, 2009</i> <i>[Signature]</i> County Engineer
Passed	<i>June 9, 2009</i> <i>[Signature]</i> District 7 Engineer of Local Roads and Streets
Releasing for Bid Based on Limited Review	<i>June 9, 2009</i> <i>[Signature]</i> Deputy Director of Highways, Region 4 Engineer

STANDARDS

- 000001-05 STANDARD SYMBOLS, ABBREVIATIONS, AND PATTERNS
- 280001-04 TEMPORARY EROSION CONTROL SYSTEMS
- 701101-02 OFF-RD OPERATIONS, MULTILANE, 15' TO 24' FROM EDGE OF PAVEMENT
- 701602-04 URBAN LANE CLOSURE, MULTILANE, 2W WITH BIDIRECTIONAL LEFT TURN LANE
- 701901-01 TRAFFIC CONTROL DEVICES

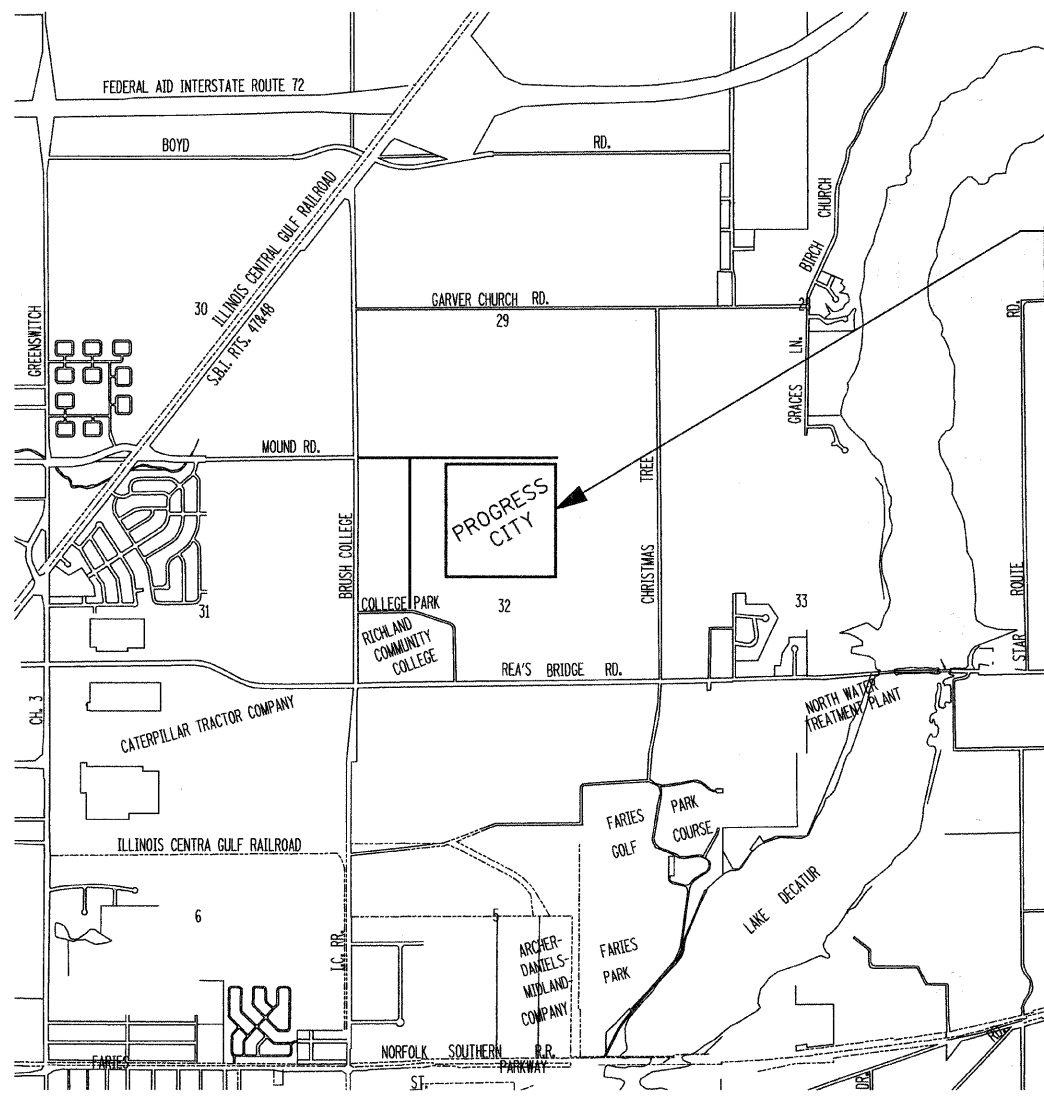
INDEX OF SHEETS

- 1 COVER SHEET, INDEX, AND STANDARDS
- 2 GENERAL NOTES AND SUMMARY OF QUANTITIES
- 3 LANDSCAPE PLAN
- 4-5 LANDSCAPE DETAILS
- 6 DITCH CLEANING PLAN
- 7 BRUSH COLLEGE DITCH PROFILE



FULL SIZE PLANS HAVE BEEN PREPARED USING STANDARD ENGINEERING SCALES. REDUCED SIZED PLANS WILL NOT CONFORM TO STANDARD SCALES. IN MAKING MEASUREMENTS ON REDUCED PLANS, THE ABOVE SCALES MAY BE USED.

J.U.L.I.E.
JOINT UTILITY LOCATION INFORMATION FOR EXCAVATION
1-800-892-0123



HLC PROJ 5248

HOMER L. CHASTAIN & ASSOCIATES, LLP CONSULTING ENGINEERS - DECATUR, ILLINOIS (HLC PROJ) 5248

GENERAL NOTES

1. THE ENGINEER SHALL NOT GUARANTEE THE WORK OF ANY CONTRACTOR OR SUBCONTRACTOR, SHALL HAVE NO AUTHORITY TO STOP WORK, SHALL HAVE NO SUPERVISION OR CONTROL AS TO THE WORK OR PERSONS DOING THE WORK, SHALL NOT BE RESPONSIBLE FOR SAFETY IN, ON, OR ABOUT THE JOB SITE OR HAVE ANY CONTROL OF THE SAFETY OR ADEQUACY OF ANY EQUIPMENT, BUILDING COMPONENT, SCAFFOLDING, SUPPORTS, FORMS OR OTHER WORK AIDS, AND SHALL HAVE NO DUTIES OR RESPONSIBILITIES IMPOSED BY ACTS GOVERNING THE WORKPLACE. IN ADDITION, THE STANDARD SPECIFICATIONS FOR ROAD AND BRIDGE CONSTRUCTION SHALL BE MODIFIED AS FOLLOWS:

 UNDER ARTICLE 105.01, ADD THE FOLLOWING SENTENCE: NOTHING CONTAINED HEREIN SHALL RELIEVE THE CONTRACTOR OF HIS/HER DUTY TO OBSERVE AND COMPLY WITH ALL APPLICABLE LAWS, NOR SHALL THE ENGINEER BE RESPONSIBLE FOR THE CONTRACTOR'S COMPLIANCE OR NON-COMPLIANCE WITH SUCH LAWS.
 UNDER ARTICLE 107.1, ADD THE FOLLOWING SENTENCE: THE ENGINEER SHALL NOT BE RESPONSIBLE FOR THE CONTRACTOR'S DUTY TO OBSERVE AND COMPLY WITH THE PROVISIONS OF THIS SECTION, OR FOR THE CONTRACTOR'S FAILURE TO DO SO.
2. THE CONTRACTOR AGREES THAT HE/SHE SHALL ASSUME SOLE AND COMPLETE RESPONSIBILITY FOR JOB SITE CONDITIONS, DURING THE COURSE OF CONSTRUCTION OF THIS PROJECT. THIS INCLUDES SAFETY OF ALL PROPERTY; THAT THIS REQUIREMENT SHALL APPLY CONTINUOUSLY AND NOT BE LIMITED TO NORMAL WORKING HOURS; AND THAT THE CONTRACTOR SHALL DEFEND, INDEMNIFY AND HOLD THE COUNTY AND THE ENGINEER HARMLESS FROM ANY AND ALL LIABILITY REAL OR ALLEGED, IN CONNECTION WITH THE PERFORMANCE OF WORK ON THIS PROJECT.
3. ALL ELEVATIONS ARE BASED ON U.S.G.S. MEAN SEA-LEVEL DATUM. THE PROPOSED GRADE ELEVATIONS SHOWN ON THE DRAWINGS ARE FINISH ELEVATIONS, AT LOCATIONS AS INDICATED.
4. THE LOCATIONS OF EXISTING UNDERGROUND UTILITIES WERE OBTAINED FROM RECORDS AND FIELD SURVEYS. IT SHALL BE THE CONTRACTOR'S RESPONSIBILITY TO VERIFY ALL UNDERGROUND UTILITY LOCATIONS PRIOR TO EXCAVATION FOR THE NEW WORK.
5. BEFORE STARTING ANY EXCAVATION, THE CONTRACTOR SHALL CALL "J.U.L.I.E." AT 1-800-892-0123 FOR FIELD LOCATIONS FOR BURIED ELECTRIC, TELEPHONE AND GAS FACILITIES (48 HOURS NOTIFICATION IS REQUIRED). THE CITY OF DECATUR SHALL BE CONTACTED FOR FIELD LOCATIONS OF WATER MAIN AND SANITARY SEWER.
6. THE CONTRACTOR SHALL COORDINATE HIS/HER CONSTRUCTION ACTIVITIES WITH AFFECTED UTILITY COMPANIES.
7. THE ABBREVIATION SSRB SHALL REFER TO THE STANDARD SPECIFICATIONS FOR ROAD AND BRIDGE CONSTRUCTION ADOPTED JANUARY 1, 2007.

SUMMARY OF QUANTITIES

ITEM NUMBER	ITEM	UNIT	TOTAL QUANTITY	ITEP	COUNTY HIGHWAY FUNDS
25001000	SEEDING, CLASS 2 (SPECIAL)	ACRE	0.5		0.5
25101504	WOOD CHIP MULCH 4"	SQ YD	100	100	
28000500	INLET AND PIPE PROTECTION	EACH	30		30
67100100	MOBILIZATION	L SUM	1	1	
70101700	TRAFFIC CONTROL AND PROTECTION	L SUM	1	1	
Z0010555	DITCH CLEANING	FOOT	2750		2750
Z0010605	CLEANING DRAINAGE SYSTEM	L SUM	1		1
XX008094	TREES, GROUP 1	L SUM	1	1	
XX008095	TREES, GROUP 2	L SUM	1	1	
XX008096	SHRUBS, GROUP 1	L SUM	1	1	
XX008097	SHRUBS, GROUP 2	L SUM	1	1	
XX008098	GRASSES, GROUP 1	L SUM	1	1	
XX008099	FORBS, GROUP 1		1	1	
XX008100	FERTILIZER TABLETS	EACH	1128	1128	

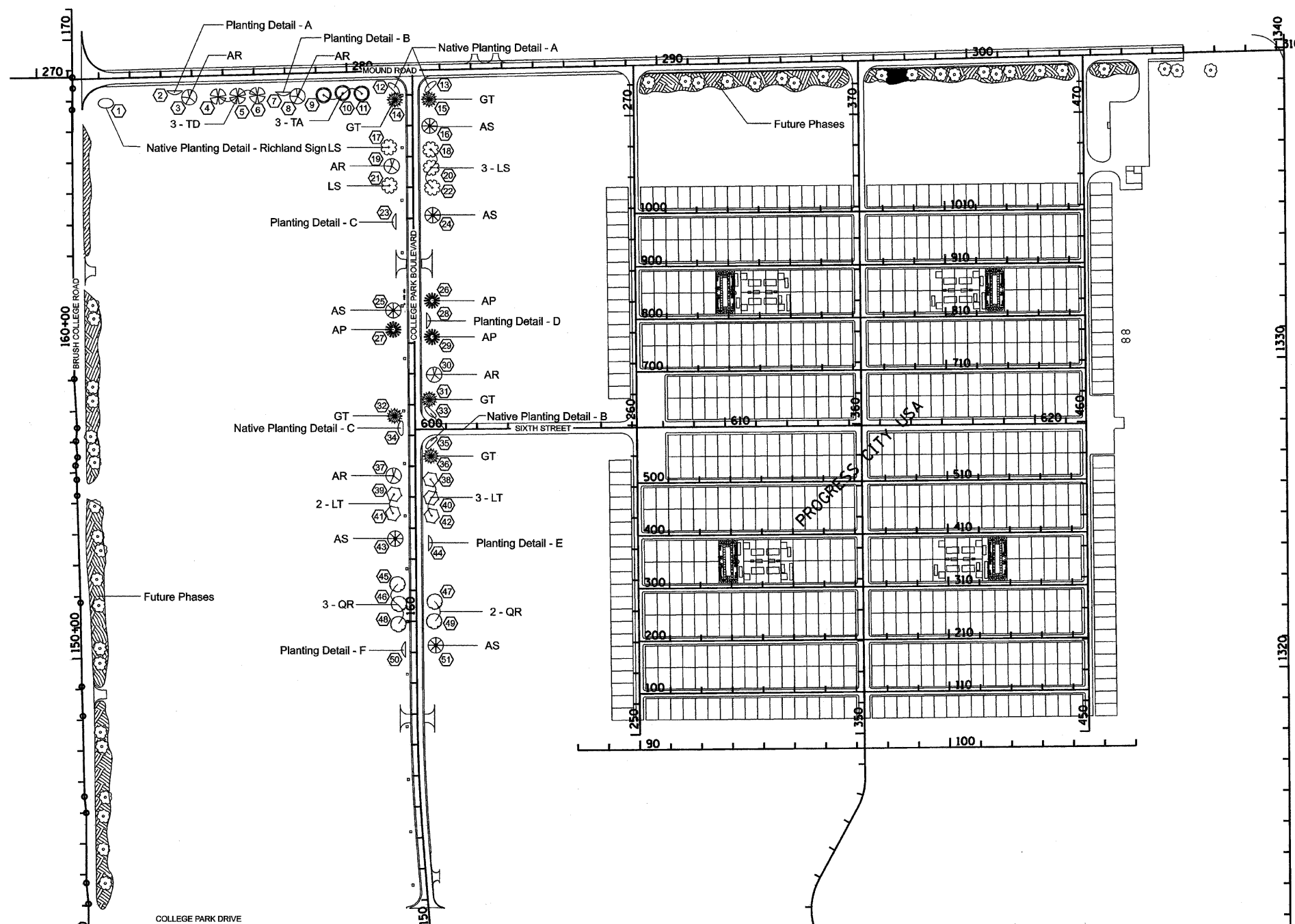
BENCHMARK

BM 5002-2
 CHISELED SQUARE ON EAST SIDE ON TOP OF LIGHT POLE FOUNDATION ON SE CORNER OF USDA PARKING LOT.
 ELEVATION 687.07

BM 4604-17
 CHISELED SQUARE ON NW CORNER MAST ARM FOUNDATION AT SW QUADRANT OF THE INTERSECTION OF MOUND ROAD AND BRUSH COLLEGE ROAD.
 ELEVATION 682.31

REVISIONS			DRAWN BY DATE	
No.	DATE	INITIALS	DLB	2/09
1				
2				
3				
4				
5				
6				
7				
8				
9				
10				

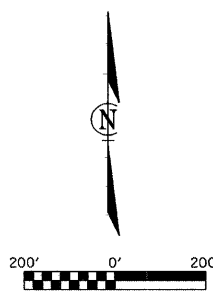
PROGRESS CITY MACON COUNTY, ILLINOIS		DECATUR CHICAGO (317) 423-8544 (773) 714-0650
HOMER L. CHASTAIN & ASSOCIATES, LLP CONSULTING ENGINEERS <small>184-001377</small>		ROCKFORD (815) 489-0050
CHECKED BY DATE PPW 2/09		BOOK NUMBER 478
PROJECT No. 5248		SHEET No. 2



PLANT LOCATION SCHEDULE

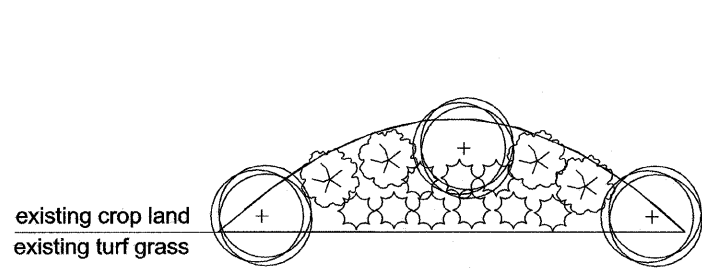
	ALIGNMENT	STATION	OFFSET	
1	MOUND ROAD	272+21	80	RT
2	MOUND ROAD	274+44	54	RT
3	MOUND ROAD	274+90	68	RT
4	MOUND ROAD	275+83	68	RT
5	MOUND ROAD	276+47	68	RT
6	MOUND ROAD	277+10	68	RT
7	MOUND ROAD	277+94	67	RT
8	MOUND ROAD	278+40	74	RT
9	MOUND ROAD	279+24	72	RT
10	MOUND ROAD	279+85	67	RT
11	MOUND ROAD	280+47	71	RT
12	MOUND ROAD	281+52	55	RT
13	MOUND ROAD	282+68	55	RT
14	COLLEGE PARK BLVD	176+85	60	LT
15	COLLEGE PARK BLVD	176+85	60	RT
16	COLLEGE PARK BLVD	175+98	60	RT
17	COLLEGE PARK BLVD	175+30	60	LT
18	COLLEGE PARK BLVD	175+22	60	RT
19	COLLEGE PARK BLVD	174+69	60	LT
20	COLLEGE PARK BLVD	174+63	60	RT
21	COLLEGE PARK BLVD	174+06	60	LT
22	COLLEGE PARK BLVD	173+98	60	RT
23	COLLEGE PARK BLVD	172+91	50	LT
24	COLLEGE PARK BLVD	173+09	60	RT
25	COLLEGE PARK BLVD	170+05	60	LT
26	COLLEGE PARK BLVD	170+35	60	RT
27	COLLEGE PARK BLVD	169+43	60	LT
28	COLLEGE PARK BLVD	169+70	46	RT
29	COLLEGE PARK BLVD	169+19	60	RT
30	COLLEGE PARK BLVD	167+96	60	RT
31	COLLEGE PARK BLVD	167+17	60	RT
32	COLLEGE PARK BLVD	166+63	60	LT
33	COLLEGE PARK BLVD	166+75	62	RT
34	COLLEGE PARK BLVD	166+23	52	LT
35	COLLEGE PARK BLVD	165+75	62	RT
36	COLLEGE PARK BLVD	165+32	60	RT
37	COLLEGE PARK BLVD	164+69	60	LT
38	COLLEGE PARK BLVD	164+57	60	RT
39	COLLEGE PARK BLVD	164+09	60	LT
40	COLLEGE PARK BLVD	163+97	60	RT
41	COLLEGE PARK BLVD	163+47	60	LT
42	COLLEGE PARK BLVD	163+39	60	RT
43	COLLEGE PARK BLVD	162+67	60	LT
44	COLLEGE PARK BLVD	162+52	46	RT
45	COLLEGE PARK BLVD	161+20	60	LT
46	COLLEGE PARK BLVD	160+56	60	LT
47	COLLEGE PARK BLVD	160+63	60	RT
48	COLLEGE PARK BLVD	159+91	60	LT
49	COLLEGE PARK BLVD	160+00	60	RT
50	COLLEGE PARK BLVD	159+10	50	LT
51	COLLEGE PARK BLVD	159+22	60	RT

NOTE:
OFFSETS ARE APPROXIMATE. PLANTINGS SHALL BE PLACED AT THE EDGE OF THE EXISTING TURF GRASS AS SHOWN IN THE LANDSCAPING DETAILS.



Landscape Plan Prepared by:
MGC Home & Garden Services
 610 E. Livingston St.
 Monticello, IL 61856
 Ph: 217-762-2297 Fax 217-762-3285

REVISIONS			LANDSCAPE PLAN	
No.	DATE	INITIALS	PROGRESS CITY MACON COUNTY, ILLINOIS	
1			DRAWN BY DATE DLB 2/09	
2			CHECKED BY DATE PPW 2/09	
3			BOOK NUMBER 478	
4			PROJECT No. 5248	
5			SHEET No. 3	
6			HOMER L. CHASTAIN & ASSOCIATES, LLP CONSULTING ENGINEERS 184-00197	
7			DECATUR CHICAGO (817) 432-8544 (773) 714-0650 ROCKFORD (815) 489-0050	



- Planting Detail A**
- (3) ⊙ Amelanchier x. grandiflora, 'Autumn Brilliance' 6' clump
 - (4) ⊗ Weigela florida, 'Wine and Roses' 5 Gal.
 - (9) ⊙ Itea 'Little Henry' 3 Gal.

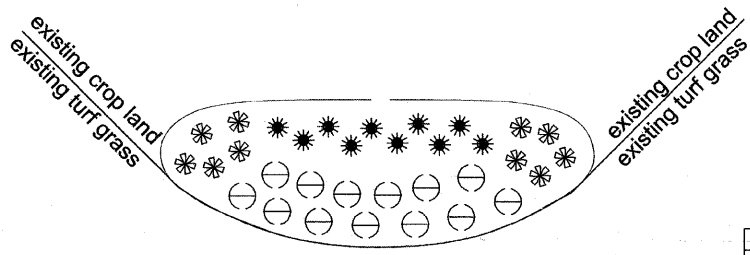
- Planting Detail B**
- (3) ⊙ Cercis canadensis, 6' clump
 - (3) ⊗ Ilex verticillata 'Berry Heavy' 5 Gal.
 - (1) ⊗ Ilex verticillata 'Jim Dandy' 5 Gal.
 - (9) ⊙ Clethra alnifolia 'Sixteen Candles' 3 Gal.

- Planting Detail C**
- (3) ⊙ Hibiscus syriacus, 6' clump
 - (4) ⊗ Chaenomeles 5 Gal.
 - (9) ⊙ Forsythia 'Golden Peep' 3 Gal.

- Planting Detail D**
- (3) ⊙ Crataegus phaenopyrum, 6' clump
 - (4) ⊗ Viburnum dentatum 'Blue Muffin' 5 Gal.
 - (9) ⊙ Berberis thunbergii 'Concorde' 3 Gal.

- Planting Detail E**
- (3) ⊙ Prunus x cistena, 6' clump
 - (4) ⊗ Cornus stolonifera, 'Arctic Fire' 5 Gal.
 - (9) ⊙ Spirea 'Tor' 3 Gal.

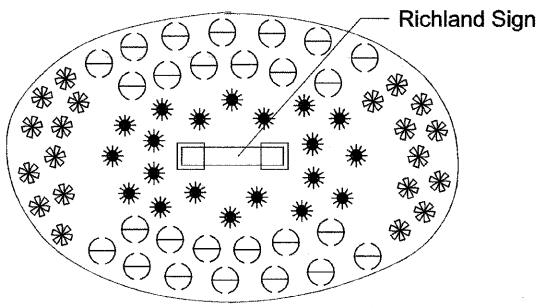
- Planting Detail F**
- (3) ⊙ Malus 'Sugar Tyme'
 - (4) ⊗ Fothergilla 'Mount Airy' 5 Gal.
 - (9) ⊙ Hypericum 'Gemo' 3 Gal.



- Native Planting Detail A**
- (20) * Panicum virgatum
 - (26) ⊖ Liatris spicata
 - (20) * Helenium autumnale

- Native Planting Detail B**
- (20) * Andropogon gerardii
 - (26) ⊖ Coreopsis palmata
 - (20) * Echinacea pallida

- Native Planting Detail C**
- (20) * Andropogon scoparius
 - (26) ⊖ Eupatorium maculatum
 - (20) * Solidago rigida



- Native Planting Detail - Richland Sign**
- (20) * Spartina pectinata
 - (26) ⊖ Rudbeckia hirta
 - (20) * Monarda fistulosa

BILL OF MATERIAL

DESIGNATION	BOTANICAL NAME	COMMON NAME	QUANTITY	UNIT
TREES, GROUP 1				
SHADE TREES				
AP	Acer platanoides	Norway Maple	3	2" B&B
AR	Acer rubrum 'Red Sunset'	Red Sunset Red Maple	5	2" B&B
AS	Acer saccharum	Sugar Maple	5	2" B&B
GT	Gleditsia triacanthos 'Shademaster'	Shademaster Common Honeylocust	5	2" B&B
LS	Liquidambar styraciflua 'Rotundiloba'	Fruitless American Sweetgum	5	2" B&B
LT	Liriodendron tulipifera	Tuliptree	5	2" B&B
QR	Quercus borealis rubra	Northern Red Oak	5	2" B&B
TD	Taxodium distichum	Common Baldcypress	3	2" B&B
TA	Tilia americana 'American Sentry'	American Sentry Linden	3	2" B&B
TREES, GROUP 2				
ORNAMENTAL TREES				
	Amelanchier x. grandiflora 'Autumn Brilliance'	Autumn Brilliance Serviceberry	3	6 FT CLUMP
	Cercis canadensis	Red Bud	3	6 FT CLUMP
	Hibiscus syriacus	Rose-of-Sharon	3	6 FT CLUMP
	Crataegus phaenopyrum	Washington Hawthorne	3	6 FT CLUMP
	Prunus x cistena	Purple Leaf Sand Cherry	3	6 FT CLUMP
	Malus x. 'Sutyzam'	Sugar Tyme Flowering Crabapple	3	1.5" B&B
SHRUBS, GROUP 1				
LARGE SHRUBS				
	Chaenomeles speciosa	Common Flowering Quince	4	5 GAL
	Cornus stolonifera 'Arctic Fire'	Arctic Fire Redosier Dogwood	4	5 GAL
	Fothergilla gardenii x. major 'Mount Airy'	Mount Airy Fothergilla	4	5 GAL
	Ilex verticillata 'Berry Heavy'	Berry Heavy Winterberry	3	5 GAL
	Ilex verticillata 'Jim Dandy'	Jim Dandy Winterberry	1	5 GAL
	Viburnum dentatum 'Blue Muffin'	Blue Muffin Viburnum	4	5 GAL
	Weigela florida 'Wine and Roses'	Wine and Roses Weigela	4	5 GAL
SHRUBS, GROUP 2				
SMALL SHRUBS				
	Berberis thunbergii 'Concorde'	Concorde Barberry	9	3 GAL
	Clethra alnifolia 'Sixteen Candles'	Sixteen Candles Summersweet Clethra	9	3 GAL
	Forsythia x Intermedia 'Coudreau' Golden Peep	Golden Peep Forsythia	9	3 GAL
	Hypericum kalmianum 'Gemo'	Gemo St. John's Wort	9	3 GAL
	Itea virginica 'Little Henry'	Little Henry Itea	9	3 GAL
	Spiraea betulifolia 'Tor'	Tor Spirea	9	3 GAL
GRASSES, GROUP 1				
GRASSES				
	Andropogon gerardii	Big Bluestem	20	1 GAL
	Andropogon scoparius	Little Bluestem	20	1 GAL
	Panicum virgatum	Prairie Switchgrass	20	1 GAL
	Spartina pectinata	Prairie cord grass	20	1 GAL
FORBS, GROUP 1				
FORBS				
	Coreopsis palmata	Prairie Coreopsis	26	1 GAL
	Echinacea pallida	Pale Purple Coneflower	20	1 GAL
	Eupatorium maculatum	Joe Pye Weed	26	1 GAL
	Helenium autumnale	Common Sneezeweed	20	1 GAL
	Liatris pycnostachya or spicata	Prairie Blazing Star	26	1 GAL
	Monarda fistulosa	Wild Bergamot	20	1 GAL
	Rudbeckia hirta	Black-eyed Susan	26	1 GAL
	Solidago rigida	Stiff Goldenrod	20	1 GAL

Landscape Plan Prepared by:
MGC Home & Garden Services
 610 E. Livingston St.
 Monticello, IL 61856
 Ph: 217-762-2297 Fax 217-762-3285



LANDSCAPE DETAILS

PROGRESS CITY
 MACON COUNTY, ILLINOIS

REVISIONS

No.	DATE	INITIALS
1		
2		
3		
4		
5		
6		
7		
8		
9		
10		

DRAWN BY DATE
 DLB 2/09

CHECKED BY DATE
 PPW 2/09

BOOK NUMBER
 478

PROJECT No.
 5248

SHEET No.
 4

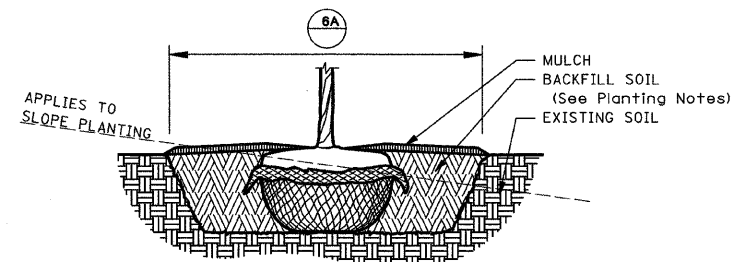
HOMER L. CHASTAIN & ASSOCIATES, LLP
 CONSULTING ENGINEERS
 184-001997

DECATUR CHICAGO
 (217) 432-8544 (773) 714-0050

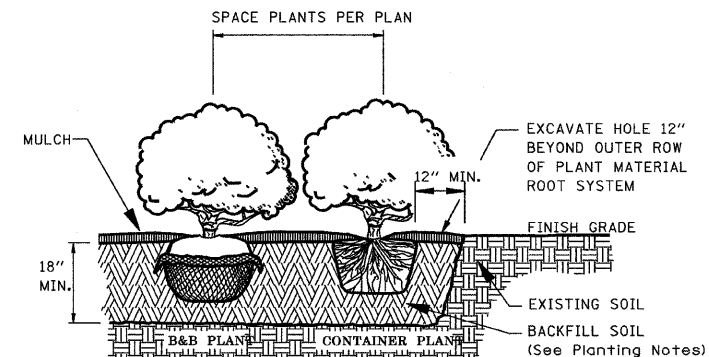
ROCKFORD
 (815) 489-0050

1) PLANTING NOTES

- BACKFILL: EXISTING SOIL
- WATER: THE CONTRACTOR SHALL MAKE, AT THEIR EXPENSE, WHATEVER ARRANGEMENTS NECESSARY TO PROVIDE ADEQUATE WATERING OF THE PLANTED AREAS THROUGHOUT THE CONTRACT DURATION. THE CONTRACTOR SHALL FURNISH ALL NECESSARY EQUIPMENT AND LABOR. THE CONTRACTOR SHALL FURNISH AND INSTALL 20 GALLON TREE GATOR BAGS AROUND SHADE TREES TO LEAVE ON SITE AFTER CONTRACT COMPLETION.
- MULCH: SHREDDED HARDWOOD 4 INCHES THICK, INSTALLED PER DETAILS
- TREE STAKING: TREE STAKING (ALL SIZES) IS NECESSARY TO MAINTAIN TREES IN A PLUMB CONDITION DUE TO PROBLEMATIC WIND CONDITIONS. REFER TO STAKING DETAILS
- FERTILIZER: AGRIFORM TABLETS, 21 GRAM SIZE AS MANUFACTURED BY THE SCOTTS COMPANY. APPLY AT THE FOLLOWING RATES:
 CONTAINER SHRUBS, 21 GRAM TABLET
 1 GALLON POT - 1 TABLET
 3 GALLON POT - 2 TABLETS
 5 GALLON POT - 3 TABLETS
 B & B TREES, 21 GRAM TABLET
 4 TABLETS FOR EVERY FOOT OF ROOT BALL DIAMETER
- PLANTING LAYOUT AND INSTALLATION: ALL TREES AND PLANTING BEDS SHALL BE WITHIN THE EXISTING CROP LAND. THE TREE RINGS AND PLANTING BEDS SHALL LINE UP TO THE EDGE OF THE EXISTING TURF. NO TURF SHALL BE DISTURBED. (EXCLUDING THE PLANTING BED AT THE RICHLAND SIGN)
 LAYOUT OF ALL TREES AND PLANTING BEDS SHALL BE APPROVED BY THE ENGINEER (HOMER L. CHASTAIN AND ASSOCIATES) BEFORE PLANTING BEGINS.
 ALL PLANT SUBSTITUTIONS SHALL BE APPROVED BY THE LANDSCAPE ARCHITECT THROUGH REQUEST TO THE ENGINEER.
 EDGING OF PLANTING BEDS: REFER TO TRENCHED EDGE DETAIL.



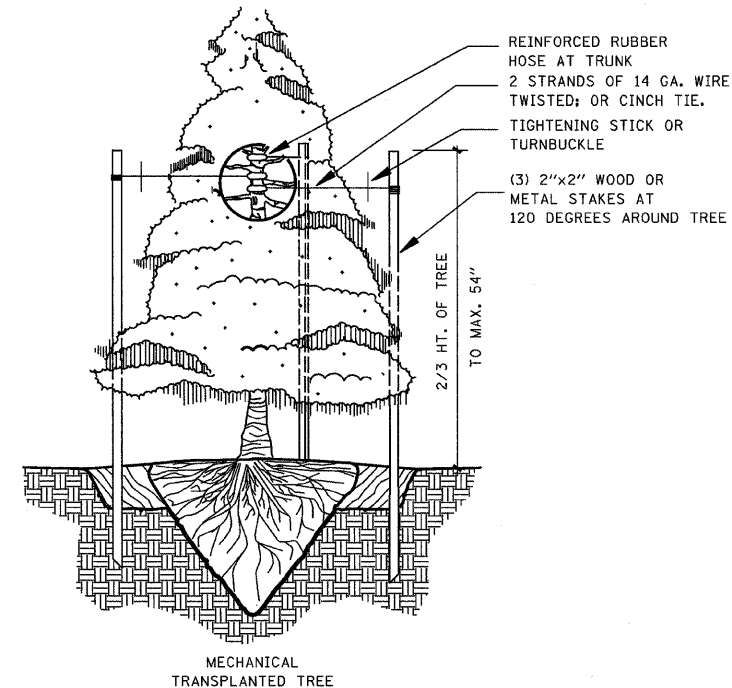
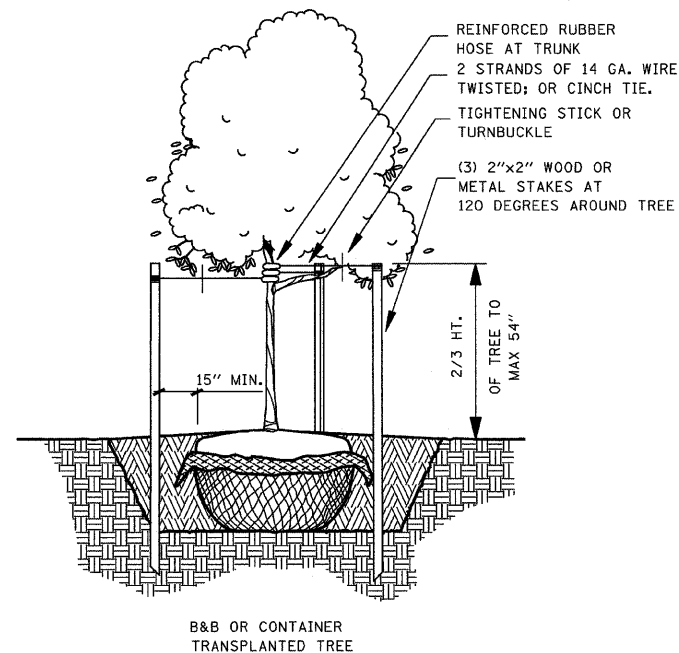
1. EXCAVATE PITS PER DETAIL. SCARIFY THE SIDES AND BOTTOM OF THE PIT BY SHOVEL CUTTING. PLANTING PIT WIDTH SHOULD BE 1 FOOT WIDER THAN THE WIDTH OF THE BALL.
2. SET PLANT ON UNDISTURBED NATIVE SOIL, OR THOROUGHLY COMPACTED BACKFILL, 3" ABOVE FINISH GRADE.
3. PLACE TREE IN UPRIGHT POSITION IN CENTER OF PIT. REMOVE BURLAP & WIRE BASKET FROM TOP OF BALL & HALF WAY DOWN SIDES.
4. BACKFILL HALFWAY UP THE ROOT BALL. THOROUGHLY PACK AND SETTLE BACKFILL TO FILL ALL VOIDS.
5. INSTALL FERTILIZE PER PLANTING NOTES. CONTINUE TO BACKFILL AND FILL ALL VOIDS UNTIL LEVEL WITH FINISH GRADE.
6. WATER WITHIN 2 HOURS OF INSTALLATION.
7. PLACE MULCH WITHIN 48 HOURS OF INSTALLATION. KEEP MULCH 4" FROM TRUNK.
8. USE OF NONBIODEGRADABLE TWINE SHALL NOT BE PERMITTED.



1. EXCAVATE PITS PER DETAIL. SCARIFY THE SIDES & BOTTOM OF THE PIT BY SHOVEL CUTTING. DIG ONE HOLE FOR EACH SHRUB, GRASS OR FORB.
2. REMOVE BURLAP FROM TOP OF BALL & HALF WAY DOWN SIDES AND/OR CONTAINER.
3. SET PLANT ON UNDISTURBED NATIVE SOIL, OR THOROUGHLY COMPACTED BACKFILL, 2" ABOVE FINISH GRADE.
4. PLACE SHRUB IN UPRIGHT POSITION IN CENTER OF PIT.
5. BACKFILL HALFWAY UP THE ROOT BALL. THOROUGHLY PACK AND SETTLE BACKFILL TO FILL ALL VOIDS.
6. INSTALL FERTILIZE PER PLANTING NOTES. CONTINUE TO BACKFILL AND FILL ALL VOIDS UNTIL LEVEL WITH FINISH GRADE.
7. WATER WITHIN 2 HOURS OF INSTALLATION.
8. PLACE MULCH WITHIN 48 HOURS OF INSTALLATION. KEEP MULCH 4" FROM TRUNK.
9. USE OF NONBIODEGRADABLE TWINE SHALL NOT BE PERMITTED.
10. SPACING OF PLANTS SHALL BE AS FOLLOWS:
 5 GAL SHRUBS - 6 FT ON CENTER
 3 GAL SHRUBS - 4.5 FT ON CENTER
 GRASSES - 5 FT ON CENTER
 FORBS - 4 FT ON CENTER

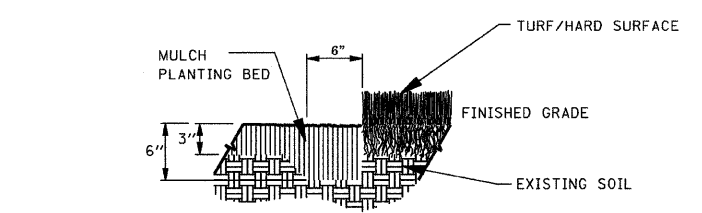
1 PLANTING NOTES NO SCALE

2 BALLED & BURLAPPED DETAIL DECIDUOUS & EVERGREEN TREE NO SCALE



4 STAKING DETAILS NO SCALE

5 SHRUB, GRASS AND FORB DETAILS NO SCALE



3 TRENCHED EDGE DETAIL NO SCALE



Landscape Plan Prepared by:
MGC Home & Garden Services
 810 E. Livingston St.
 Monticello, IL 61856
 Ph: 217-782-2297 Fax 217-782-3285

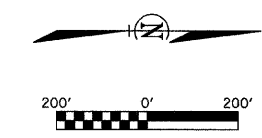
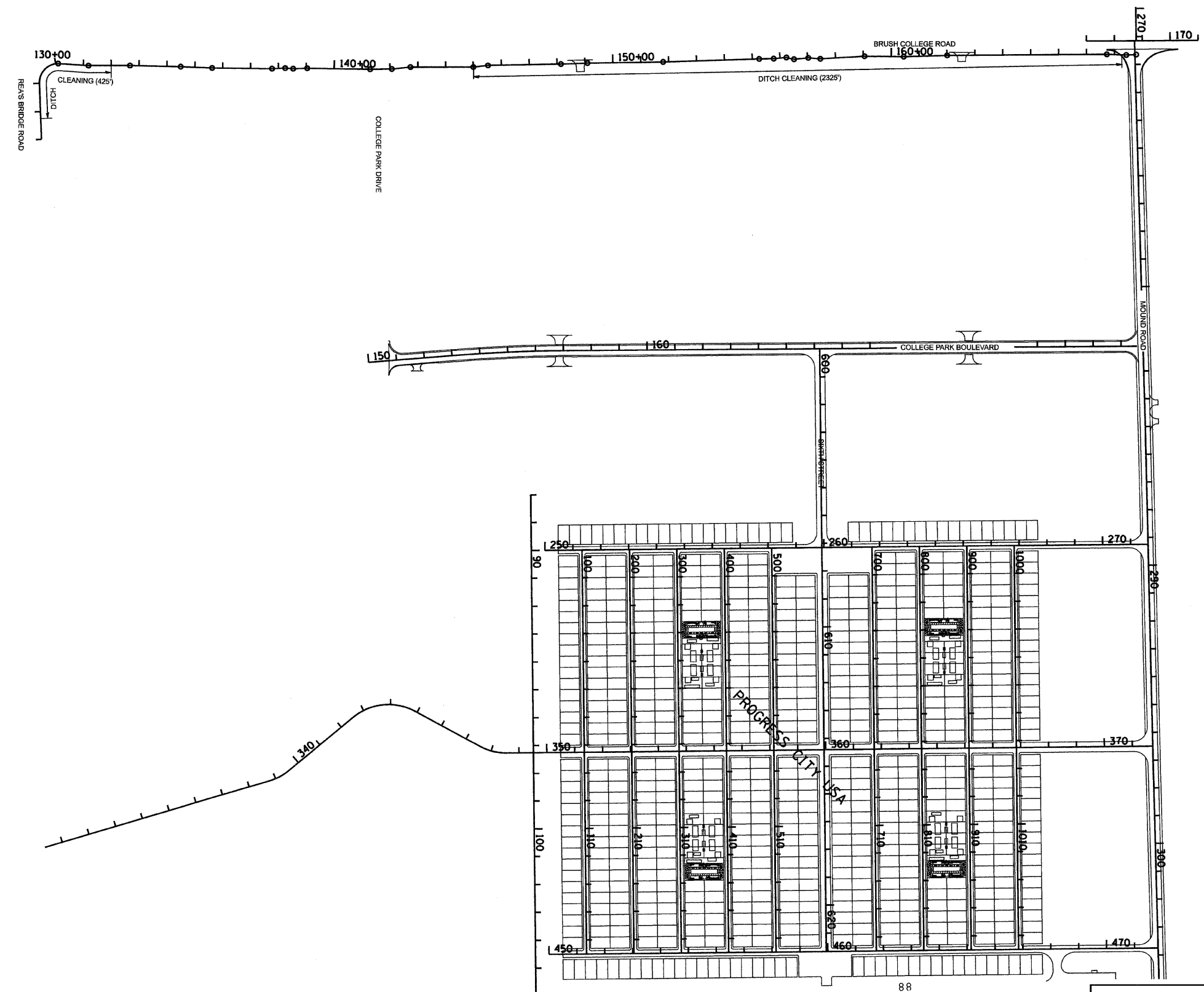
REVISIONS			LANDSCAPE DETAILS	
No.	DATE	INITIALS	PROGRESS CITY MACON COUNTY, ILLINOIS	
1			DRAWN BY DATE DLB 2/09	
2			CHECKED BY DATE PPW 2/09	
3			BOOK NUMBER 478	
4			PROJECT No. 5248	
5			SHEET No. 5	
6				
7				
8				
9				
10				

HOMER L. CHASTAIN & ASSOCIATES, LLP
 CONSULTING ENGINEERS
 184-001877

DECATUR CHICAGO
 (217) 422-8544 (773) 714-0050

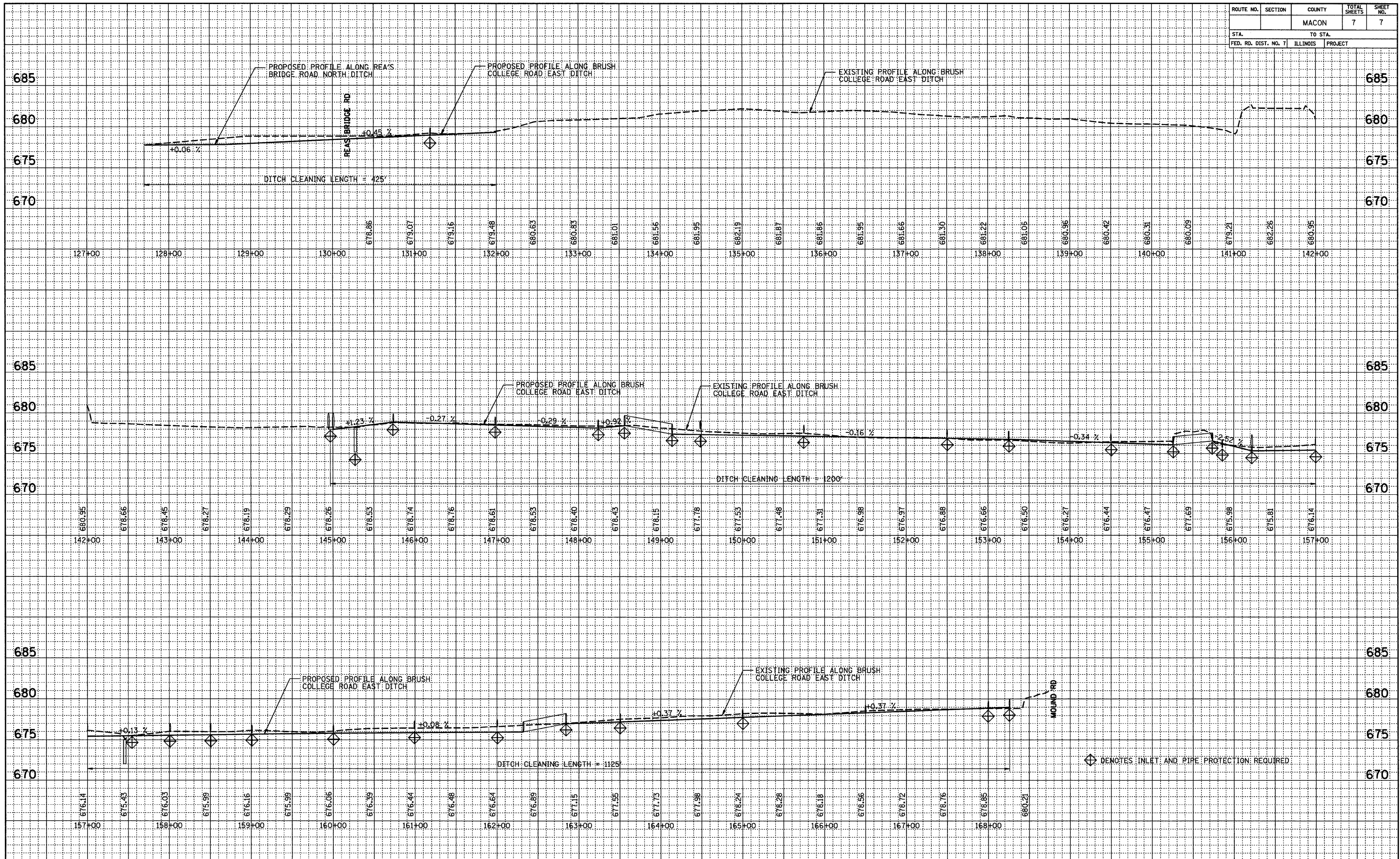
ROCKFORD
 (815) 489-0050

Contract #9559D



DITCH CLEANING PLAN			DRAWN BY DLD	DATE 2/09																																	
PROGRESS CITY MACON COUNTY, ILLINOIS			CHECKED BY PPW	DATE 2/09																																	
 HOMER L. CHASTAIN & ASSOCIATES, LLP CONSULTING ENGINEERS 184-001897			DECATUR CHICAGO (817) 432-8644 (773) 714-0060																																		
			ROCKFORD (815) 489-0050																																		
<table border="1"> <thead> <tr> <th>No.</th> <th>DATE</th> <th>INITIALS</th> </tr> </thead> <tbody> <tr><td>1</td><td></td><td></td></tr> <tr><td>2</td><td></td><td></td></tr> <tr><td>3</td><td></td><td></td></tr> <tr><td>4</td><td></td><td></td></tr> <tr><td>5</td><td></td><td></td></tr> <tr><td>6</td><td></td><td></td></tr> <tr><td>7</td><td></td><td></td></tr> <tr><td>8</td><td></td><td></td></tr> <tr><td>9</td><td></td><td></td></tr> <tr><td>10</td><td></td><td></td></tr> </tbody> </table>			No.	DATE	INITIALS	1			2			3			4			5			6			7			8			9			10			BOOK NUMBER 478	PROJECT No. 5248
No.	DATE	INITIALS																																			
1																																					
2																																					
3																																					
4																																					
5																																					
6																																					
7																																					
8																																					
9																																					
10																																					
			SHEET No.	6																																	

ROUTE NO.	SECTION	COUNTY	TOTAL SHEETS	SHEET NO.
		MACON	7	7
STA. TO STA.		PROJECT		
FED. RD. DIST. NO. 7		ILLINOIS		



EAST DITCH PROFILE ALONG BRUSH COLLEGE ROAD

FINAL SURVEYED, PLOTTED, AND CHECKED BY: [Blank] DATE: [Blank]
 NOTEBOOK NO. [Blank] PROJECT NO. [Blank]

ORIGINAL SURVEYED, PLOTTED, AND CHECKED BY: [Blank] DATE: [Blank]
 NOTEBOOK NO. [Blank] PROJECT NO. [Blank]