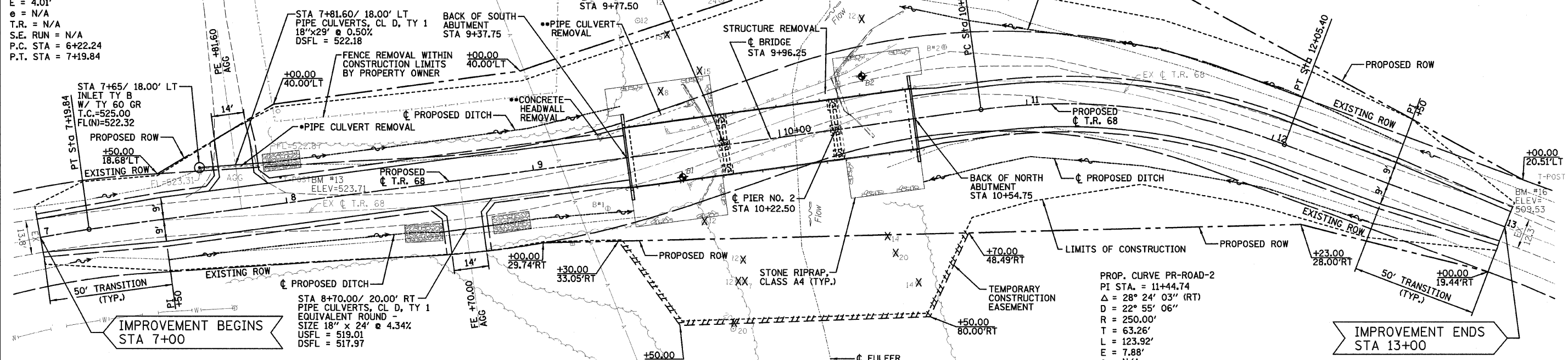


PROP. CURVE PR-ROAD-1
 PI STA. = 6+71.48
 $\Delta = 18^\circ 38' 25''$ (RT)
 $D = 19^\circ 05' 55''$
 $R = 300.00'$
 $T = 49.24'$
 $L = 97.60'$
 $E = 4.01'$
 $\theta = N/A$
 $T.R. = N/A$
 $S.E. RUN = N/A$
 $P.C. STA = 6+22.24$
 $P.T. STA = 7+19.84$

NOTES:

- 1.) *COST INCLUDED WITH PIPE CULVERTS, CL D, TY 1 18".
- 2.) **COST INCLUDED WITH REMOVAL OF EXISTING STRUCTURES.



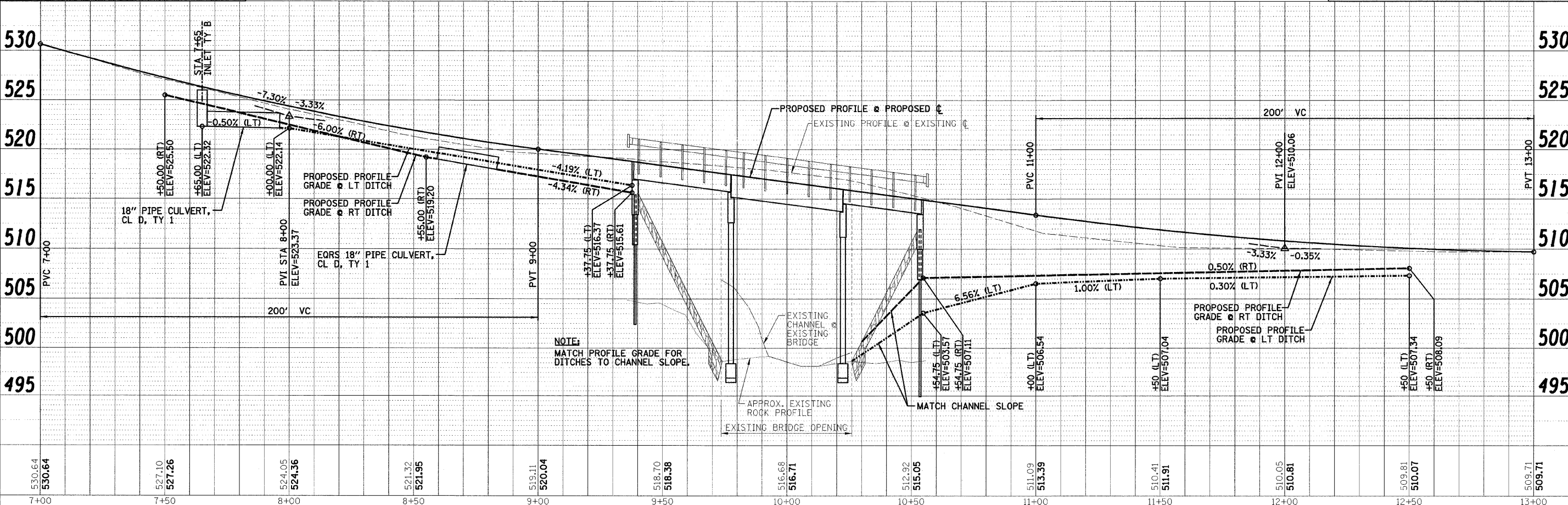
BENCHMARK #13
 T-POST #175' SOUTH OF BRIDGE ALONG
 ROADWAY, STA. 7+99/11' LT., ELEV. = 523.71.

12 TONS OF STONE RIPRAP,
 CLASS A3 TO BE INSTALLED
 BY THE TOWNSHIP.

SECTION 8 T6N, R5E, 3rd P.M. EVA E. ALBERTERNST

PROP. CURVE PR-ROAD-2
 PI STA. = 11+44.74
 $\Delta = 28^\circ 24' 03''$ (RT)
 $D = 22^\circ 55' 06''$
 $R = 250.00'$
 $T = 63.26'$
 $L = 123.92'$
 $E = 7.88'$
 $\theta = N/A$
 $T.R. = N/A$
 $S.E. RUN = N/A$
 $P.C. STA = 10+81.48$

BENCHMARK #16
 T-POST #250' NORTH OF BRIDGE ALONG
 ROADWAY, STA. 13+07/20' LT., ELEV. = 509.53.



DESIGNED - JML	REVISED -	EFFINGHAM COUNTY DEPARTMENT OF HIGHWAYS	PLAN & PROFILE	T.R. 68 OVER FULFER CREEK SECTION 05-07106-00-BR EFFINGHAM, COUNTY	T.R.	SECTION	COUNTY	TOTAL SHEETS	SHEET NO.
DRAWN - JJO	REVISED -				68	05-07106-00-BR	EFFINGHAM	25	4
CHECKED - MSW	REVISED -				CONTRACT NO. 95593				
DATE - 06/22/09	REVISED -				FED. ROAD DIST. NO. 7 ILLINOIS FED. AID PROJECT				

FARNSWORTH GROUP, INC.

CONSULTING ENGINEERS - 2709 MCGRAW DRIVE BLOOMINGTON, ILLINOIS 61704 (309) 663-8435 / (309) 663-1571 FAX