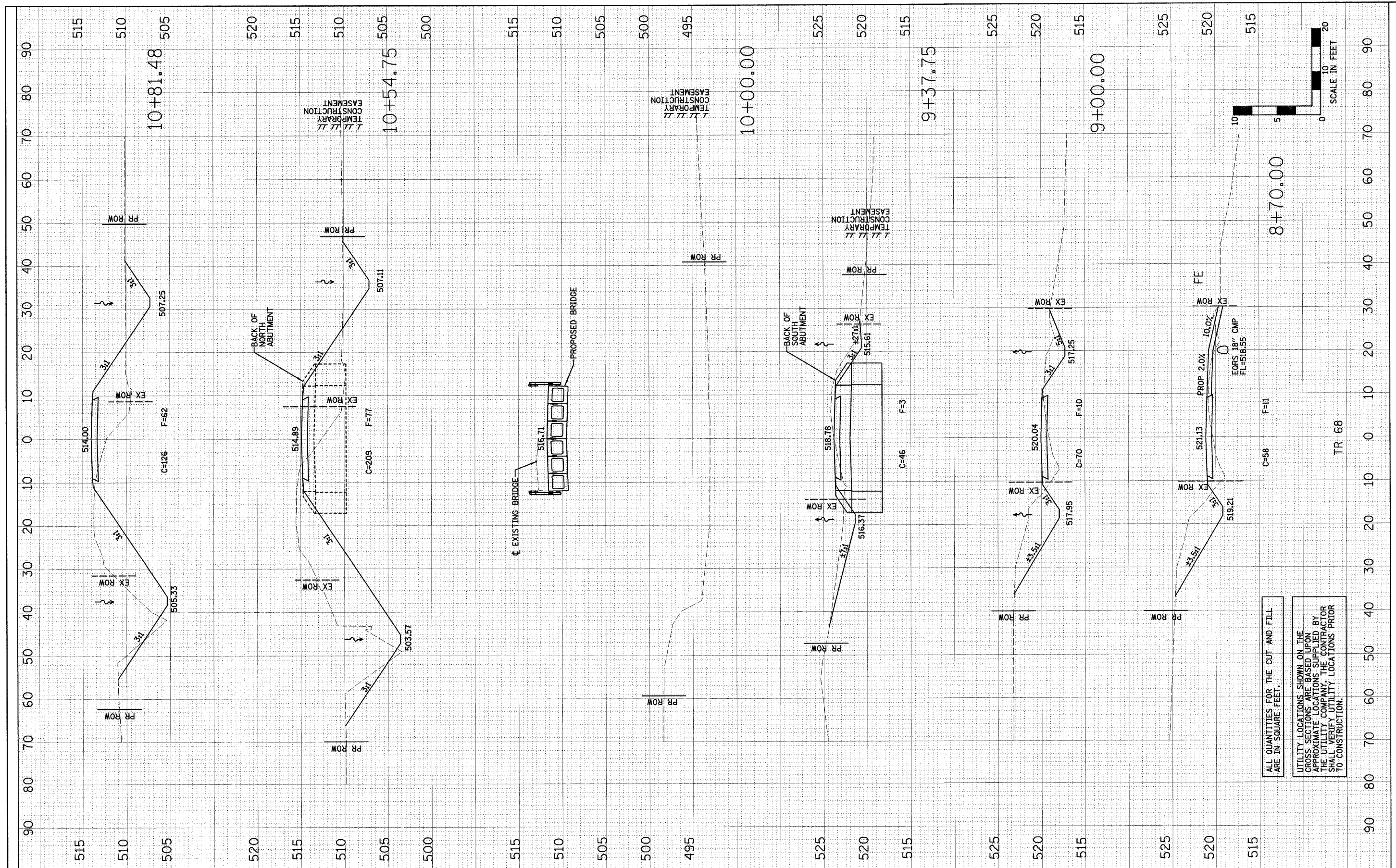


FILED	FORWARDED	BY	DATE
DATE	DATE		
NO.	NO.		

ORIGINAL	FORWARDED	BY	DATE
SURVEY	PLOTTED		
NOTE BOOK	TEMPLATE		
NO.	NO.		



ALL QUANTITIES FOR THE CUT AND FILL ARE IN SQUARE FEET.

UTILITY LOCATIONS SHOWN ON THE CROSS SECTIONS ARE BASED UPON APPROXIMATE LOCATIONS SUPPLIED BY THE UTILITY COMPANY. THE CONTRACTOR SHALL VERIFY UTILITY LOCATIONS PRIOR TO CONSTRUCTION.

TR 68

DESIGNED	JML	REVISED	
DRAWN	JJO	REVISED	
CHECKED	MSW	REVISED	
DATE	06/22/09	REVISED	

EFFINGHAM COUNTY DEPARTMENT OF HIGHWAYS

CROSS SECTIONS			
SCALE:	SHEET NO. 24 OF 25 SHEETS	STA. 9+00.00	TO STA. 11+00.00

**T.R. 68 OVER FULFER CREEK
SECTION 05-07106-00-BR
EFFINGHAM, COUNTY**

T.R.	SECTION	COUNTY	TOTAL SHEETS	SHEET NO.
68	05-07106-00-BR	EFFINGHAM	25	24
FED. ROAD DIST. NO. 7 ILLINOIS FED. AID PROJECT				CONTRACT NO. 95393