

RT. STA. 36+64 TO STA. 36+75
COMBINATION CONCRETE CURB AND GUTTER
REMOVAL
11 FT.
COMBINATION CONCRETE CURB AND GUTTER,
TYPE B-6.18
11 FT.

RT. STA. 36+70 TO STA.36+74
SIDEWALK REMOVAL
16 SQ. FT.
P.C.C. SIDEWALK, 4"
16 SQ. FT.

RT. STA. 37+06
VALVE VAULT TO BE ADJUSTED
1 EACH

LT. STA. 36+50 TO STA. 36+71
COMBINATION CONCRETE CURB AND GUTTER
REMOVAL
21 FT.
COMBINATION CONCRETE CURB AND GUTTER,
TYPE B-6.18
21 FT.

LT. STA. 37+03 TO STA. 37+43
COMBINATION CONCRETE CURB AND GUTTER
REMOVAL
40 FT.
COMBINATION CONCRETE CURB AND GUTTER,
TYPE B-6.18
40 FT.

RT. STA. 37+45
VALVE VAULT TO BE ADJUSTED
1 EACH

LT. STA. 37+83 TO STA. 38+46
COMBINATION CONCRETE CURB AND GUTTER
REMOVAL
63 FT.
COMBINATION CONCRETE CURB AND GUTTER,
TYPE B-6.18
63 FT.

LT. STA. 38+09 TO STA.38+56
SIDEWALK REMOVAL
64 SQ. FT.
P.C.C. SIDEWALK, 4"
64 SQ. FT.

LT. STA. 38+86 TO STA.38+92
SIDEWALK REMOVAL
23 SQ. FT.
P.C.C. SIDEWALK, 4"
23 SQ. FT.
DETECTABLE WARNINGS
8 SQ. FT.

PROJECT ENDS
STA. 38+86
HOT-MIX ASPHALT SURFACE REMOVAL - BUTT JOINT
120 SQ. YDS.
TEMPORARY RAMP
15 SQ. YDS.
END HOT-MIX ASPHALT RESURFACING
MATCH EXIST. SURFACE ELEV.

LT. STA. 39+17 TO STA. 39+22
SIDEWALK REMOVAL
20 SQ. FT.
P.C.C. SIDEWALK, 4"
20 SQ. FT.
DETECTABLE WARNINGS
8 SQ. FT.

LT. STA. 39+96 TO STA.40+31
SIDEWALK REMOVAL
140 SQ. FT.
P.C.C. SIDEWALK, 4"
140 SQ. FT.

IMPROVEMENT ENDS
STA. 40+31

RT. STA. 37+59 TO STA.37+73
SIDEWALK REMOVAL
71 SQ. FT.
P.C.C. SIDEWALK, 4"
71 SQ. FT.
DETECTABLE WARNINGS
8 SQ. FT.

RT. STA. 37+08 TO STA. 37+60
COMBINATION CONCRETE CURB AND GUTTER
REMOVAL
52 FT.
COMBINATION CONCRETE CURB AND GUTTER,
TYPE B-6.18
52 FT.

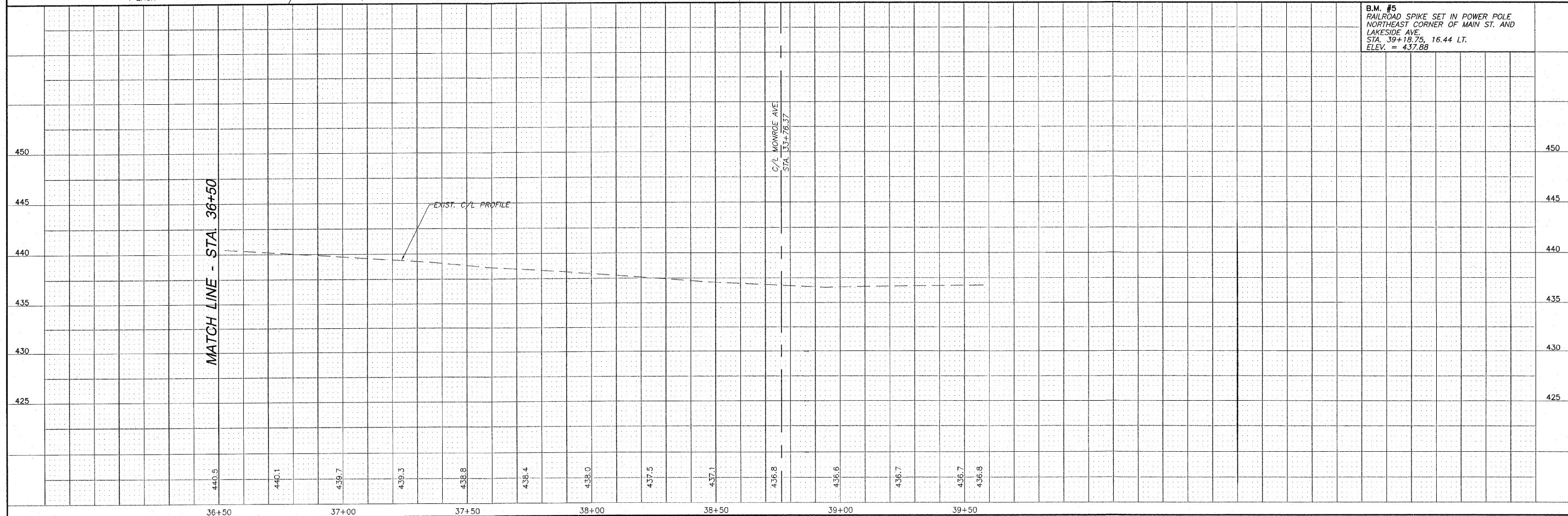
RT. STA. 37+08 TO STA. 37+60
COMBINATION CONCRETE CURB AND GUTTER
REMOVAL
52 FT.
COMBINATION CONCRETE CURB AND GUTTER,
TYPE B-6.18
52 FT.

HOT-MIX ASPHALT SURFACE REMOVAL - BUTT JOINT
11 SQ. YDS.

END HOT-MIX ASPHALT RESURFACING
MATCH EXIST. SURFACE ELEV.
TEMPORARY RAMP
18.3 SQ. YDS.

RT. STA. 28+57
MANHOLES TO BE ADJUSTED
1 EACH

B.M. #5
RAILROAD SPIKE SET IN POWER POLE
NORTHEAST CORNER OF MAIN ST. AND
LAKESIDE AVE.
STA. 39+18.75, 16.44 LT.
ELEV. = 437.88



REVISIONS

SMS ENGINEERS
Sheppard, Morgan & Schwaab, Inc.
CONSULTING ENGINEERS AND LAND SURVEYORS
215 Market Street, P.O. Box E, Alton, IL 62002 618/462-3755 E-mail: mail@smsengineers.com
10 Central Industrial Drive, Suite 3, Granite City, IL 62040 618/977-5700 E-mail: mail@granitecity.com
DESIGN FIRM # 184-000992

EAST ALTON, ILLINOIS - MAIN STREET IMPROVEMENTS
SECTION 09-00045-01-RS
FAU ROUTE 8967
PLAN AND PROFILE

E ALTON MAIN ST PP5.DWG	
REF. BK.	PG.
JOB NO.	227624.1
DSN. BY:	LDA
DWN. BY:	CDP
CHK. BY:	DEG
DATE:	MAY, 2009
SCALE: HORIZ: 1"=20'	
VERT: 1"=5'	
SHEET	8 OF 9