

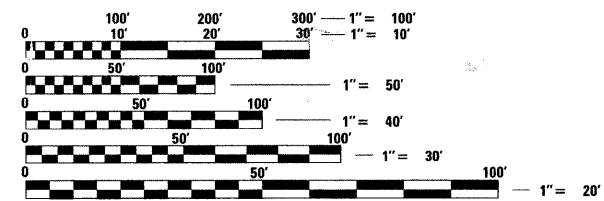
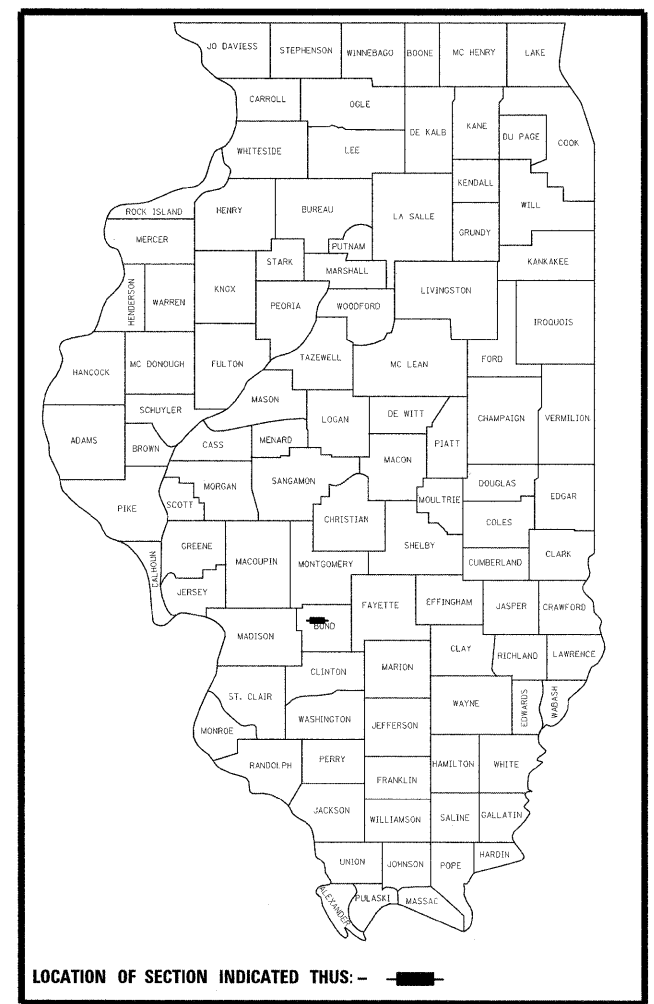
F.A.S. RTE.	SECTION	COUNTY	TOTAL SHEETS	SHEET NO.
777	09-00080-01-RS	BOND	22	1
FEDERAL AID PROJECT		ILLINOIS CONTRACT NO. 97394		

STATE OF ILLINOIS  
DEPARTMENT OF TRANSPORTATION  
DIVISION OF HIGHWAYS

**PROPOSED  
HIGHWAY PLANS**

FAS ROUTE 777 (CR 18)  
SECTION: 09-00080-01-RS  
PROJECT: SORENTO ROAD (PHASE II)  
BOND COUNTY  
PROJECT NO. ARA-0777(114)  
JOB NO. C-98-381-09

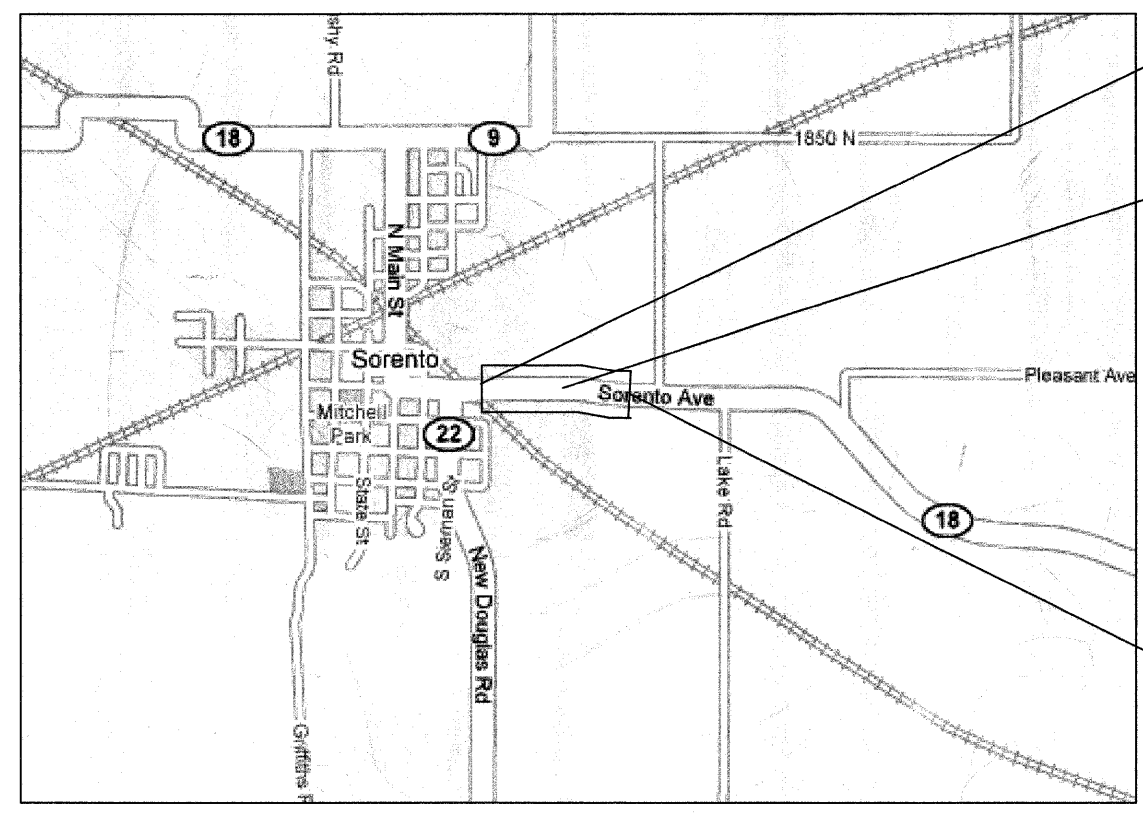
FOR INDEX OF SHEETS AND HIGHWAY STANDARDS,  
SEE SHEET NO. 2



FULL SIZE PLANS HAVE BEEN PREPARED USING STANDARD  
ENGINEERING SCALES. REDUCED SIZED PLANS WILL NOT  
CONFORM TO STANDARD SCALES. IN MAKING MEASUREMENTS  
ON REDUCED PLANS, THE ABOVE SCALES MAY BE USED.

J.U.L.I.E.  
JOINT UTILITY LOCATION INFORMATION FOR EXCAVATION  
1-800-892-0123 (DESIGN LOCATE # A1381323)

**PRINTED BY THE AUTHORITY  
OF THE STATE OF ILLINOIS**



BEGIN WORK  
STA 14+50

SORENTO ROAD  
(CH 18, FAS 777)

END WORK  
STA 30+00

LOCATION MAP

LENGTH OF IMPROVEMENTS  
SORENTO ROAD (FAS ROUTE 777)  
NET LENGTH = 1,550 FEET = 0.294 MILES

ROADWAY CLASSIFICATION: COLLECTOR  
CURRENT ADT = 700  
DESIGN YEAR (2029) ADT = 1288

PROJECT ENGINEER: DEVON DeJOURNETT  
PROJECT MANAGER: MICHAEL McCORMICK

STATE OF ILLINOIS  
DEPARTMENT OF TRANSPORTATION  
DIVISION OF HIGHWAYS

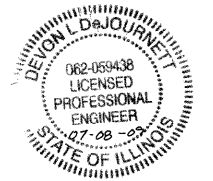
SUBMITTED *[Signature]* 20 09  
BOND COUNTY ENGINEER

PASSED *[Signature]* July 16 20 09  
DISTRICT 8 ENGINEER OF LOCAL ROADS AND STREETS

RELEASING FOR  
BID BASED ON  
LIMITED REVIEW *[Signature]* July 16 20 09  
DEPUTY DIRECTOR OF HIGHWAYS, REGION 5 ENGINEER - MARY C. LAMIE



*[Signature]*  
DEVON L. DEJOURNETT, P.E.  
ILLINOIS REGISTERED ENGINEER NO. 062-059438  
REGISTRATION EXPIRES NOV. 30, 2009



FILE: H:\5592\COVER\_5592.DGN  
PLOTTED: 8/4/16

**INDEX OF SHEETS**

- 1 COVER
- 2 INDEX OF SHEETS, LIST OF STANDARDS AND GENERAL NOTES
- 3 SUMMARY OF QUANTITIES AND PAVEMENT DESIGN INFORMATION
- 4-5 TYPICAL SECTIONS
- 6-8 SCHEDULES
- 9 PAVEMENT REMOVAL & EXISTING TOPOGRAPHY - SORENTO ROAD
- 10-11 PLAN & PROFILE - SORENTO ROAD
- 12-13 PLAN & PROFILE - SORENTO DRAINAGE
- 14 EROSION CONTROL - SORENTO ROAD
- 15 SIGNING PLAN
- 16 PAVEMENT MARKING
- 17 DETAILS
- 18-22 CROSS SECTIONS - SORENTO ROAD

**LIST OF STANDARDS**

- 000001-05 STANDARD SYMBOLS, ABBREVIATIONS, AND PATTERNS
- 001006 DECIMAL OF AN INCH AND OF A FOOT
- 280001-04 TEMPORARY EROSION CONTROL SYSTEMS
- 442201-03 CLASS C AND D PATCHES
- 542306-02 PRECAST REINFORCED CONCRETE ELLIPTICAL FLARED END SECTION
- 666001-01 RIGHT-OF-WAY MARKERS
- 701006-03 OFF-ROAD OPERATIONS, 2L, 2W, 4.5 M (15') TO 600 MM (24<sup>3</sup>/<sub>32</sub>) FROM PAVEMENT EDGE
- 701011-02 OFF-ROAD MOVING OPERATIONS, 2L, 2W, DAY ONLY
- 701201-03 LANE CLOSURE, 2L, 2W, DAY ONLY, FOR SPEEDS > 45 MPH
- 701301-03 LANE CLOSURE, 2L, 2W, SHORT TIME OPERATIONS
- 701306-02 LANE CLOSURE, 2L, 2W, SLOW MOVING OPERATIONS DAY ONLY, FOR SPEEDS > 45 MPH
- 701326-03 LANE CLOSURE, 2L, 2W, PAVEMENT WIDENING, FOR SPEEDS > 45 MPH
- 701336-05 LANE CLOSURE, 2L, 2W, WORK AREAS IN SERIES, FOR SPEEDS > 45 MPH
- 701901-01 TRAFFIC CONTROL DEVICES
- 720001-01 SIGN PANEL MOUNTING DETAILS
- 720006-02 SIGN PANEL ERECTION DETAILS
- 720011-01 METAL POSTS FOR SIGNS, MARKERS AND DELINEATORS
- 729001-01 APPLICATIONS OF TYPES A AND B METAL POSTS (FOR SIGNS & MARKERS)
- 780001-02 TYPICAL PAVEMENT MARKINGS
- B.L.R. 21-8 TYPICAL APPLICATION OF TRAFFIC CONTROL DEVICES FOR CONSTRUCTION ON RURAL LOCAL HIGHWAYS
- B.L.R. 24-2 MAILBOX TURNOUT FOR LOCAL ROADS

**GENERAL NOTES**

1. ALL ELEVATIONS REFER TO U.S.G.S. MEAN SEA LEVEL DATUM.
2. THE CONTRACTOR SHALL EXERCISE CARE IN PERFORMING REMOVALS SO AS NOT TO DISRUPT ADJOINING FEATURES THAT ARE TO REMAIN IN PLACE. ANY DAMAGE CAUSED TO ADJOINING FEATURES AS A RESULT OF THE CONTRACTOR'S NEGLIGENCE SHALL BE REPAIRED AT THE CONTRACTOR'S EXPENSE TO THE SATISFACTION OF THE ENGINEER.
3. THE PRIME CONTRACTOR SHALL BE RESPONSIBLE FOR ALL SUB-CONTRACTED WORK, REGARDLESS OF FUNDING SOURCE. THE SPECIAL PROVISIONS, SPECIFICATIONS, AND STANDARD SPECIFICATIONS SHALL GOVERN CONTRACTUAL REQUIREMENTS FOR SAID ARRANGEMENTS.
4. THE PRIME CONTRACTOR SHALL BE RESPONSIBLE FOR TRAFFIC CONTROL AND PROTECTION.
5. ALL SAW CUTTING REQUIRED FOR REMOVALS SHALL BE INCLUDED IN THE CONTRACT UNIT PRICE PER UNIT OF REMOVAL QUANTITIES.
6. THE CONTRACTOR SHALL EXERCISE CARE IN EXCAVATING AROUND EXISTING UTILITIES TO REMAIN IN PLACE, SUCH AS WATER AND SEWER MAINS, AND SHALL BE RESPONSIBLE FOR REPAIR OF THESE AND MAINTENANCE OF SERVICE, IF DAMAGED BY THE CONTRACTOR'S ACTIVITIES, AS DEEMED SUCH BY THE ENGINEER.
7. THE CONTRACTOR SHALL BE RESPONSIBLE FOR ESTABLISHING POSITIVE DRAINAGE IN THE DISTURBED AREAS, TO THE SATISFACTION OF THE ENGINEER.
8. ALL AREAS THAT ARE DISTURBED BEYOND THE SEEDING LIMITS SHALL BE GRADED BY THE CONTRACTOR AT HIS/HER EXPENSE, IN THE SAME MANNER AS FINAL GRADING WORK PER THE SPECIFICATIONS, TO THE SATISFACTION OF THE ENGINEER.
9. IN ADDITION TO WARNING SIGNS SHOWN ON THE STANDARDS FOR TRAFFIC CONTROL, ROAD CONSTRUCTION AHEAD SIGNS SHALL BE PLACED ON INTERSECTING SIDE ROADS THROUGHOUT THE WORK ZONE.
10. REMOVAL OF EXISTING OIL AND CHIP SURFACE AND AGGREGATE HAS BEEN INCLUDED IN THE EARTHWORK QUANTITIES AND WILL BE PAID FOR AT THE CONTRACT UNIT PRICE PER CU. YD. FOR EARTH EXCAVATION OF THE TYPE SPECIFIED.
11. ALL ADVANCED WARNING SIGNS SHALL BE 48" FLUORESCENT ORANGE.
12. THE FOLLOWING RATES OF APPLICATION HAVE BEEN USED IN CALCULATING PLAN QUANTITIES.

**APPLICATION RATES**

AGGREGATE MATERIALS	2.05 TONS/CU YD
GRANULAR MATERIALS	2.05 TONS/CU YD
AGGREGATE PRIME COAT	5 LBS/SQ YD (AGGREGATE SURFACE) OR 3 LBS/SQ YD (CONCRETE OR BITUMINOUS SURFACE)
BITUMINOUS CONCRETE SURFACE & BINDER COURSE	112 LBS/SQ YD/INCH OR 2.016 TONS/CU YD
BITUMINOUS PRIME COAT	0.375 GAL/SQ YD (AGGREGATE SURFACE) OR 0.075 GAL/SQ YD (CONCRETE OR BITUMINOUS SURFACE)
FOR SEEDED AREAS	
NITROGEN FERTILIZER NUTRIENT	90 LBS/ACRE
PHOSPHORUS FERTILIZER NUTRIENT	90 LBS/ACRE
POTASSIUM FERTILIZER NUTRIENT	90 LBS/ACRE
LIME	2 TONS/ACRE
TEMPORARY EROSION CONTROL SEEDING	100 LB/ACRE
MULCH - METHOD 2	2 TONS/ACRE

**KNOWN UTILITY COMPANIES**

VILLAGE OF SORENTO  
ATTN: JULIE LENEAVE  
103 SOUTH MAIN  
SORENTO, IL 62086  
TELEPHONE: (217) 851-5080

MADISON TELEPHONE CO  
ATTN: STEPHEN SCHWARTZ  
21668 DOUBLE ARCH RD  
STAUNTON, IL 62088  
TELEPHONE: (618) 635-5000

AMEREN IP  
CONSTRUCTION: (800)-892-7715  
GAS EMERGENCY: (800)-755-6000  
ELEC EMERGENCY: (800)-755-7000

FRONTIER COMMUNICATIONS  
ATTN: BILL DANIEL  
145 SOUTH HALL  
ROSEVILLE, IL 61473  
TELEPHONE: (402) 250-1095

FILE NAME = H:\5592\5592.10\GN.5592.dgn	USER NAME = .USERDESCR.	DESIGNED - DLD	REVISED -	<b>STATE OF ILLINOIS DEPARTMENT OF TRANSPORTATION</b>	<b>INDEX OF SHEETS, LIST OF STANDARDS AND GENERAL NOTES</b>				F.A.S RTE.	SECTION	COUNTY	TOTAL SHEETS	SHEET NO.		
	PLOT SCALE = 5.0000 "/ IN.	DRAWN - EDW	REVISED -		SCALE: NONE	SHEET NO.	OF	SHEETS	STA.	TO STA.	777	09-00080-01-RS	BOND	22	2
	PLOT DATE = 7/9/2009	CHECKED -	REVISED -						<b>CONTRACT NO. 97394</b>		FED. ROAD DIST. NO. 8 ILLINOIS FED. AID PROJECT				

HENRY, MEISENHEIMER & GENDE, INC., 1075 LAKE ROAD, PO BOX 70, CARLYLE, IL 62231, PHONE (618) 594-3711 WWW.HMGENGINEERS.COM

**SUMMARY OF QUANTITIES**

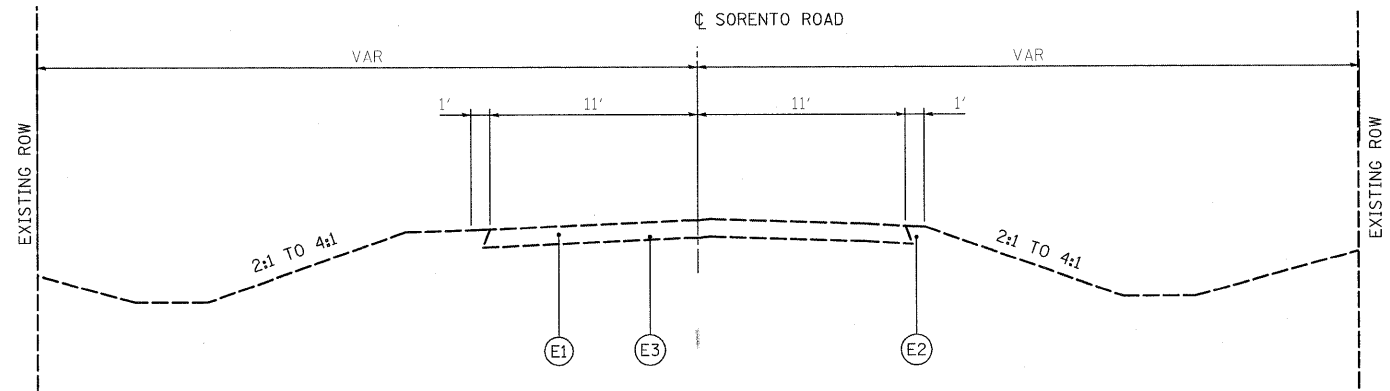
CODE NO.	ITEM	UNIT	PHASE II QUANTITY
20200100	EARTH EXCAVATION	CU YD	458
20200500	EARTH EXCAVATION (WIDENING)	CU YD	236
20201200	REMOVAL AND DISPOSAL OF UNSUITABLE MATERIAL	CU YD	236
20800150	TRENCH BACKFILL	CU YD	11
25000110	SEEDING, CLASS 1A	ACRE	0.8
25000400	NITROGEN FERTILIZER NUTRIENT	POUND	72
25000500	PHOSPHORUS FERTILIZER NUTRIENT	POUND	72
25000600	POTASSIUM FERTILIZER NUTRIENT	POUND	72
25000700	AGRICULTURAL GROUND LIMESTONE	TON	1.6
25100115	MULCH, METHOD 2	ACRE	0.8
28000250	TEMPORARY EROSION CONTROL SEEDING	POUND	80
28000300	TEMPORARY DITCH CHECKS	EACH	5
28000500	INLET AND PIPE PROTECTION	EACH	6
35100100	AGGREGATE BASE COURSE, TYPE A	TON	49
35101100	AGGREGATE BASE COURSE, TYPE A 12"	SQ YD	706
40600100	BITUMINOUS MATERIALS (PRIME COAT)	GALLON	1,110
40600300	AGGREGATE (PRIME COAT)	TON	24
40600982	HOT-MIX ASPHALT SURFACE REMOVAL - BUTT JOINT	SQ YD	147
40600990	TEMPORARY RAMP	SQ YD	123
40603080	HOT-MIX ASPHALT BINDER COURSE, IL-19.0, N50	TON	1,173
40603310	HOT-MIX ASPHALT SURFACE COURSE, MIX "C", N50	TON	353
44201717	CLASS D PATCHES, TYPE II, 6 INCH	SQ YD	19
44201721	CLASS D PATCHES, TYPE III, 6 INCH	SQ YD	52
48100400	AGGREGATE SHOULDERS, TYPE A 5"	SQ YD	916
50105220	PIPE CULVERT REMOVAL	FOOT	72
54214521	PRECAST REINFORCED CONCRETE FLARED END SECTIONS, EQUIVALENT ROUND-SIZE 36"	EACH	2
54248515	CONCRETE COLLAR	EACH	2
542A0217	PIPE CULVERTS, CLASS A, TYPE 1 12"	FOOT	80
67100100	MOBILIZATION	L SUM	1
70103700	TRAFFIC CONTROL COMPLETE	L SUM	1
72000100	SIGN PANEL - TYPE 1	SQ FT	29
72000200	SIGN PANEL - TYPE 2	SQ FT	21
72000300	SIGN PANEL - TYPE 3	SQ FT	70
72400500	RELOCATE SIGN PANEL ASSEMBLY - TYPE A	EACH	2
72900100	METAL POST - TYPE A	FOOT	166
* 78001110	PAINT PAVEMENT MARKING - LINE 4"	FOOT	4,000

\*DENOTES SPECIALTY ITEMS

NOTE: FUNDING IS 100% FEDERAL

STRUCTURAL DESIGN TRAFFIC: MID-LIFE YEAR: 2019  
 PV = 752 SU = 60 MU = 43  
 ROAD / STREET CLASSIFICATION: CLASS = III  
 PERCENT OF STRUCTURAL DESIGN TRAFFIC IN DESIGN LANE:  
 P = 88.00% S = 7.00% M = 5.00%  
 TRAFFIC FACTOR: ACTUAL TF = 0.235 AC TYPESEE BELOW  
 MINIMUM TF = 0.5  
 SUBGRADE SUPPORT RATING:  
 SSR = POOR (STA. 14+50 TO 30+00 )  
 NOTE: FALLING WEIGHT DEFLECTOMETER (FWD) TESTING WAS PERFORMED AND USED TO DETERMINE THE PERFORMANCE OF THE EXISTING STRUCTURE

MIXTURE COMPOSITION TABLE:  
 MIXTURE USE: SURFACE  
 APPLICATION: HOT-MIX ASPHALT SURFACE COURSE, MIX "C", N50  
 AIR VOIDS / Ndes: 4.0% @ Ndes 50  
 PG BINDER GRADE: 64-22  
 MIXTURE COMPOSITION: IL 12.5  
 FRICTION AGGREGATE: MIXTURE C  
 RAP % (MAX): 15%  
 MIXTURE WEIGHT: 112 LB/SY/INCH  
 MIXTURE USE: BINDER  
 APPLICATION: HOT-MIX ASPHALT BINDER COURSE, IL-19.0, N50  
 AIR VOIDS / Ndes: 4.0% @ Ndes 50  
 PG BINDER GRADE: PG 64-22  
 MIXTURE COMPOSITION: IL 19.0  
 RAP % (MAX): 25%  
 MIXTURE WEIGHT: 112 LB/SY/INCH



**SORENTO ROAD (CR-18/FAS777)**  
STA 14+50 TO STA 30+00

- LEGEND**
- (E1) EXISTING OIL & CHIP, 3 3/4"
  - (E2) EXISTING EARTH SHOULDER
  - (E3) EXISTING CRUSHED STONE BASE, 5"

FILE NAME =  
H:\5592\5592.10\TypoSectionsEX.5592.dgn

USER NAME = \_USERDESCR\_

PLOT SCALE = 5.0000' / IN.

PLOT DATE = 7/9/2009

DESIGNED - DLD

DRAWN - EDW

CHECKED -

DATE - 6-9-09

REVISED -

REVISED -

REVISED -

REVISED -

**STATE OF ILLINOIS**  
**DEPARTMENT OF TRANSPORTATION**

**EXISTING TYPICAL SECTION**

SCALE: NONE SHEET NO. OF SHEETS STA. TO STA.

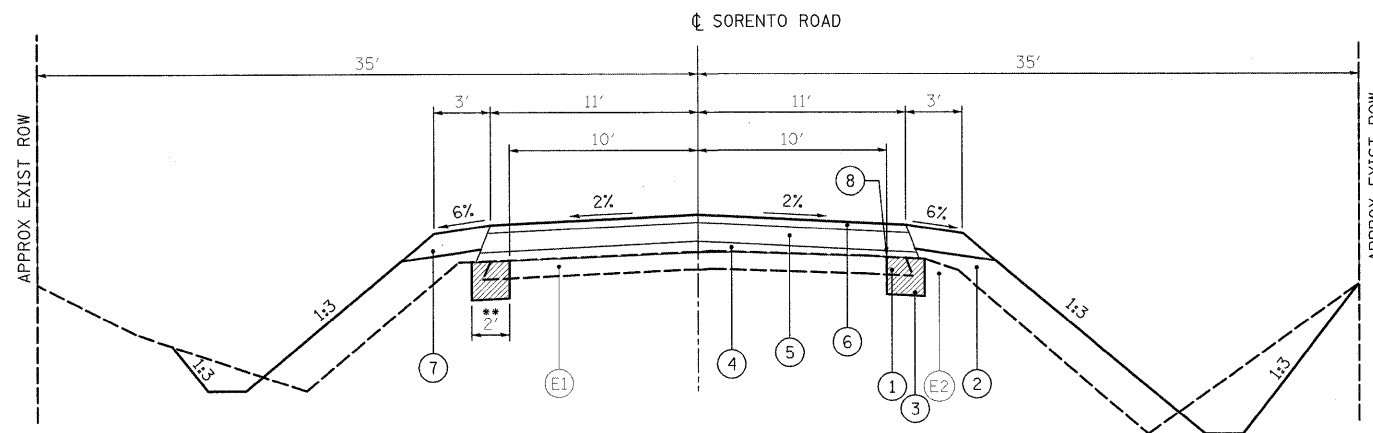
F.A.S. RTE.	SECTION	COUNTY	TOTAL SHEETS	SHEET NO.
777	09-00080-01-RS	BOND	22	4
<b>CONTRACT NO. 97394</b>				
<small>FED. ROAD DIST. NO. 8 ILLINOIS FED. AID PROJECT</small>				

**LEGEND**

- ⓔ1 EXISTING OIL & CHIP
- ⓔ2 EXISTING EARTH SHOULDER
  
- ① EARTH EXCAVATION (WIDENING & SHOULDER)
- ② FURNISHED EXCAVATION
- ③ AGGREGATE BASE COURSE, 12"
- ④ HOT-MIX ASPHALT BINDER COURSE, IL-19.0, N50 (VAR DEPTH)\*
- ⑤ HOT-MIX ASPHALT BINDER COURSE, IL-19.0, N50 (3 1/2")
- ⑥ HOT-MIX ASPHALT SURFACE COURSE, MIX "C", N50 (1 1/2")\*
- ⑦ AGGREGATE SHOULDERS, TYPE A 4"
- ⑧ SAW CUT / MILLING LINE

• SOME AREAS MAY NOT PROVIDE ENOUGH CLEARANCE FOR MINIMUM LIFTS OF BINDER COURSE TO BE PLACED. AREAS WHERE THE MINIMAL THICKNESS CAN NOT BE OBTAINED SHALL BE FILLED WITH SURFACE COURSE. THE RESULTING SURFACE COURSE THICKNESS MAY BE IN EXCESS OF THE PROPOSED 1 1/2 INCHES. SURFACE COURSE AND BINDER COURSE QUANTITIES HAVE BEEN MODIFIED TO ACCOMMODATE FOR CHANGES. WORK WILL BE PAID FOR BY THE ACTUAL MATERIALS PLACED IN THE FIELD AND MAXIMUM OVERRUNS ALLOWED BY THE STANDARD SPECIFICATIONS.

•• 2.5 FT FROM STA 26+00 TO 27+50 ON LEFT AND RIGHT SIDES



**SORENTO ROAD (CR-18/FAS777)**  
STA 14+50 TO STA 30+00

FILE NAME = H:\5592\5592.10\TypSections\_5592.dgn

USER NAME = \_USERDESCR\_

DESIGNED - DLD

REVISED -

DRAWN - EDW

REVISED -

PLOT SCALE = 5.0000 "/ IN.

CHECKED -

REVISED -

PLOT DATE = 7/9/2009

DATE - 6-9-09

REVISED -

**STATE OF ILLINOIS  
DEPARTMENT OF TRANSPORTATION**

**PROPOSED TYPICAL SECTION**

SCALE: NONE SHEET NO. OF SHEETS STA. TO STA.

F.A.S. RTE.	SECTION	COUNTY	TOTAL SHEETS	SHEET NO.
777	09-00080-01-RS	BOND	22	5
<b>CONTRACT NO. 97394</b>				
<small>FED. ROAD DIST. NO. 8 ILLINOIS FED. AID PROJECT</small>				

EARTHWORK SCHEDULE

LOCATION	A	B	C	D	E	F
	EARTH EXCAVATION (WIDENING)	REMOVAL OF UNSUITABLE MATERIAL	EARTH EXCAVATION	SHRINKAGE FACTOR (0.75)	REQUIRED FILL	EXCESS MATERIAL
STATION	CU YD	CU YD	CU YD	CU YD	CU YD	CU YD
STA 14+50.00 TO 30+00.00	236.0	236.0	457.3	343.0	311.3	31.7
TOTALS	236.0	236.0	457.3	343.0	311.3	31.7
USE	236	236	458	343	312	32

- NOTES:
- COLUMN "A" HAS BEEN ESTIMATED FROM CROSS SECTION AREAS.
  - COLUMN "B" IS THE REMOVAL OF ANY UNSUITABLE EARTH EXCAVATION. FOR ESTIMATING PURPOSES, ALL EARTH EXCAVATION (WIDENING) SHOULD BE CONSIDERED UNSUITABLE. ONLY FIELD MEASURED VOLUMES REMOVED FROM THE SITE WILL BE PAID FOR.
  - COLUMN "C" IS EARTH EXCAVATION OTHER THAN THAT REQUIRED FOR WIDENING.
  - COLUMN "D" IS THE REMAINING SUITABLE MATERIAL THAT MAY BE USED FOR FILL. COLUMN "D" IS NOT A PAY ITEM.
  - COLUMN "E" REPRESENTS THE TOTAL REQUIRED FILL FOR THE PROJECT. COLUMN "E" IS NOT A PAY ITEM.
  - COLUMN "F" REPRESENTS THE ESTIMATED EXCESS MATERIAL (COLUMN "D" - COLUMN "E"). COLUMN "F" IS NOT A PAY ITEM

CULVERT SCHEDULE

LOCATION	TYPE	PIPE	PIPE	CONCRETE	PRECAST REINFORCED	TRENCH
		CULVERT REMOVAL	CULVERTS, CLASS A, TYPE 1 12"	CONCRETE COLLARS	CONCRETE FLARED END SECTIONS, EQUIVALENT ROUND-SIZE 36"	BACKFILL
STATION		FOOT	FOOT	EACH	EACH	CU YD
LT STA. 17+32	ENTRANCE	10" STEEL	15.2			1.3
RT STA. 17+43	ENTRANCE	10" STEEL	20.1			1.7
RT STA. 18+14	ENTRANCE	10" STEEL	15.8			1.4
RT STA. 24+78	ENTRANCE	UNKNOWN	20			1.7
STA. 15+64	MAINLINE	ELYP. CMP		2	2	4.6
TOTALS			71.1	2.0	2.0	10.7
USE			72	2	2	11

ALL REMOVALS SHALL INCLUDE REMOVAL OF ANY EXISTING END SECTIONS OR HEADWALLS. WORK SHALL NOT BE PAID FOR SEPARATELY, BUT SHALL BE INCLUDED IN THE UNIT PRICE PER FOOT OF THE REQUIRED REMOVAL PAYITEM.

PATCHING SCHEDULE

LOCATION	A		B
	CLASS D PATCHES, TYPE II, 6 INCH		CLASS D PATCHES, TYPE III, 6 INCH
STATION	LENGTH	WIDTH	SQ YD
	FT	FT	SQ YD
LEFT 15+50.00	15	6	10
CENTER 18+50.00	12	12	16
RIGHT 24+50.00	12	12	16
LEFT 26+50.00	10	8	8.9
RIGHT 27+25.00	15	12	20
TOTALS			18.9
USE			19

APPROXIMATE AREAS AND LOCATIONS SHOWN ABOVE. ACTUAL DIMENSIONS TO BE DETERMINED IN FIELD. QUANTITIES MAY BE SUBSTANTIALLY REDUCED AFTER FIELD INSPECTION BY ENGINEER.

PAVING SCHEDULE

LOCATION	A	B	C	D	E	F	G	H
	AGGREGATE BASE COURSE, TYPE A, 12"	HOT-MIX ASPHALT SURFACE REMOVAL - BUTT JOINT	TEMPORARY RAMPS	BITUMINOUS MATERIALS (PRIME COAT)	AGGREGATE (PRIME COAT)	HOT-MIX ASPHALT BINDER COURSE, IL-19.0, N50 (VAR)	HOT-MIX ASPHALT BINDER COURSE, IL-19.0, N50 (3 1/2")	HOT-MIX ASPHALT SURFACE COURSE, MIX "C", N50
STATION	SQ YD	SQ YD	SQ YD	GALLON	TON	TON	TON	TON
LT 14+50.00 TO 30+00.00	352.8							
RT 14+50.00 TO 30+00.00	352.8							
FULL WIDTH 14+50.00 TO 30+00.00				1109.1	23.8	506.7	665.9	352.1
FULL WIDTH 14+50.00 TO 14+70.00		73.3						
FULL WIDTH 29+70.00 TO 30+00.00		73.3						
MILLING 14+50.00 TO 14+55.00			12.22					
1ST LIFT 14+90.00 TO 15+00.00			24.44					
2ND LIFT 14+90.00 TO 15+00.00			24.44					
2ND LIFT 29+50.00 TO 29+60.00			24.44					
1ST LIFT 29+50.00 TO 29+60.00			24.44					
MILLING 29+95.00 TO 30+00.00			12.22					
TOTALS	705.6	146.6	122.2	1,109.1	23.8	506.7	665.9	352.1
USE	706	147	123	1,110	24	1,173		353

SHOULDER SCHEDULE

LOCATION	AGGREGATE SHOULDERS, TYPE A 5"
STATION	SQ YD
RT 14+50.00 TO 17+35.14	94.31
LT 14+50.00 TO 14+90.59	12.79
LT 15+07.88 TO 17+23.64	70.44
LT 17+40.36 TO 26+77.04	311.22
RT 17+50.86 TO 18+03.61	15.56
RT 18+23.86 TO 24+69.14	213.56
RT 24+86.86 TO 30+00.00	114.32
LT 26+99.01 TO 27+41.02	11.89
LT 27+79.80 TO 30+00.00	71.68
TOTALS	915.8
USE	916

ENTRANCE SCHEDULE

LOCATION	TYPE	EXISTING DRIVEWAY MATERIAL	L	L2	L3	L2 %	L3 %	W	W2	R	AGGREGATE BASE COURSE, TYPE A
STATION			FOOT	FOOT	FOOT			FOOT	FOOT	FOOT	TON
LT14+99	PE	ROCK	11	3	15	-6.00	-2.91	13.29	31.57	10	5.4
LT17+32	PE	ROCK	11	3	15	-6.00	-5.59	11.00	31.00	10	8.6
RT17+43	PE	ROCK	11	3	15	-6.00	-4.35	10.00	30.00	10	5.0
RT18+14	PE	ROCK	11	3	15	-6.00	-2.35	14.00	34.25	10	9.0
RT24+78	FE	ROCK	11	3	15	-6.00	-3.55	12.00	32.00	10	3.7
LT26+92	PE	ROCK	11	3	20	-5.92	-2.70	10.00	40.03	15	3.4
LT27+60	PE	ROCK	11	3	17	-6.00	-3.36	13.25	62.49	25	13.0
TOTALS											48.1
USE											49

(SEE ALSO ENTRANCE DETAILS & CROSS SECTIONS)

HENRY, MEISENHEIMER & GENDE, INC., 1075 LAKE ROAD, PO BOX 70, CARLYLE, IL 62231 PHONE (618) 594-3711 WWW.HMENGINEERS.COM

SEEDING SCHEDULE

LOCATION	A	B	C	D	E	F	G
	TEMPORARY EROSION CONTROL SEEDING	SEEDING CLASS 1A	NITROGEN FERTILIZER NUTRIENT	PHOSPHORUS FERTILIZER NUTRIENT	POTASSIUM FERTILIZER NUTRIENT	AGRICULTURAL GROUND LIMESTONE	MULCH, METHOD 2
STATION	POUND	ACRES	POUND	POUND	POUND	POUND	ACRE
RT STA. 14+50.00 TO STA. 17+35.14	8.0	0.08	7.2	7.2	7.2	320	0.08
LT STA. 14+50.00 TO STA. 14+90.59	1.0	0.01	0.9	0.9	0.9	40	0.01
LT STA. 15+07.88 TO STA. 17+23.64	7.0	0.07	6.3	6.3	6.3	280	0.07
LT STA. 17+40.36 TO STA. 26+77.04	24.0	0.24	21.6	21.6	21.6	960	0.24
RT STA. 17+50.86 TO STA. 18+03.61	2.0	0.02	1.8	1.8	1.8	80	0.02
RT STA. 18+23.86 TO STA. 24+69.14	18.0	0.18	16.2	16.2	16.2	720	0.18
RT STA. 24+86.86 TO STA. 30+00.00	14.0	0.14	12.6	12.6	12.6	560	0.14
LT STA. 26+99.01 TO STA. 27+41.02	1.0	0.01	0.9	0.9	0.9	40	0.01
LT STA. 27+79.80 TO STA. 30+00.00	2.0	0.02	1.8	1.8	1.8	80	0.02
TOTALS	77.0	0.77	69.3	69.3	69.3	3,080	0.8
USE	80	0.8	72	72	72	(1.6 Ton)	0.8

SIGN SCHEDULE

LOCATION	PLAN ID	SIGN PANEL	SIGN PANEL	SIGN PANEL	RELOCATE	METAL POST
		TYPE 1	TYPE 2	TYPE 3	SIGN PANEL ASSEMBLY - TYPE A	TYPE A
STATION		SF	SF	SF	EACH	FOOT
SORENTO ROAD						
STA. 12+00.00 24 FT LEFT	4,5,6	2.25	10.5	35		60
STA. 14+50.00 24 FT LEFT	1B				1	
STA. 14+50.00 24 FT RIGHT	1A				1	
STA. 15+00.00 24 FT RIGHT	2A	5				11
STA. 19+50.00 24 FT LEFT	2B	5				11
STA. 30+00.00 24 FT LEFT	3	5				11
STA. 32+00.00 24 FT LEFT	7	9				13
STA. 34+75.00 24 FT LEFT	4,5,6	2.25	10.5	35		60
TOTALS		28.5	21	70	2	166
USE		29	21	70	2	166

EROSION CONTROL SCHEDULE

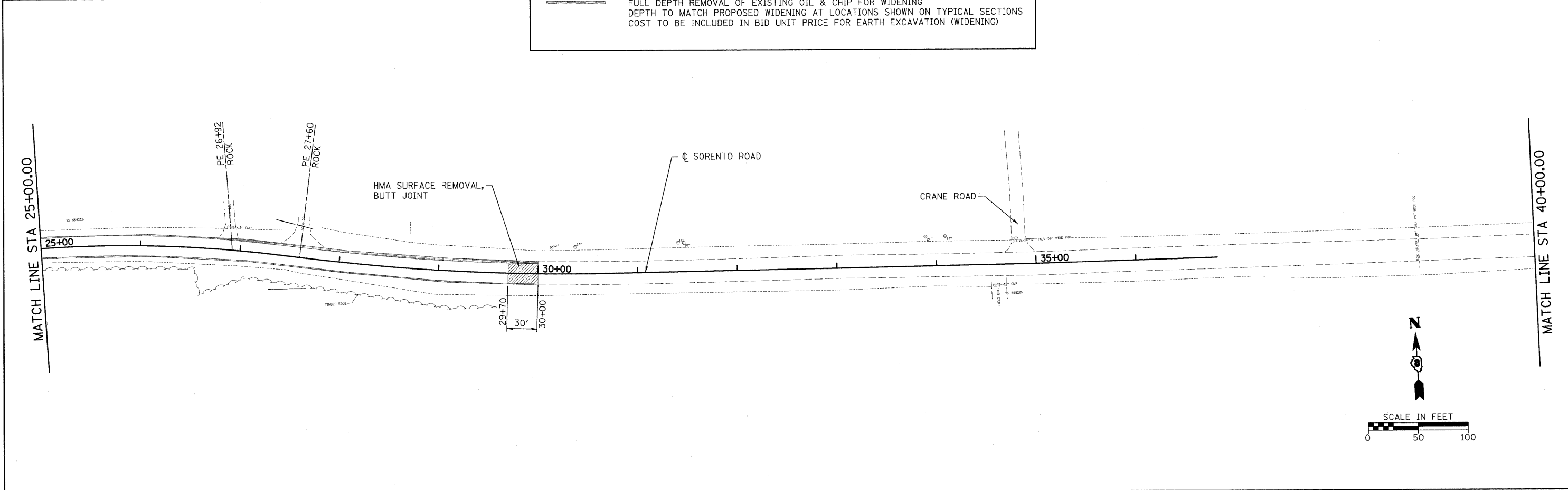
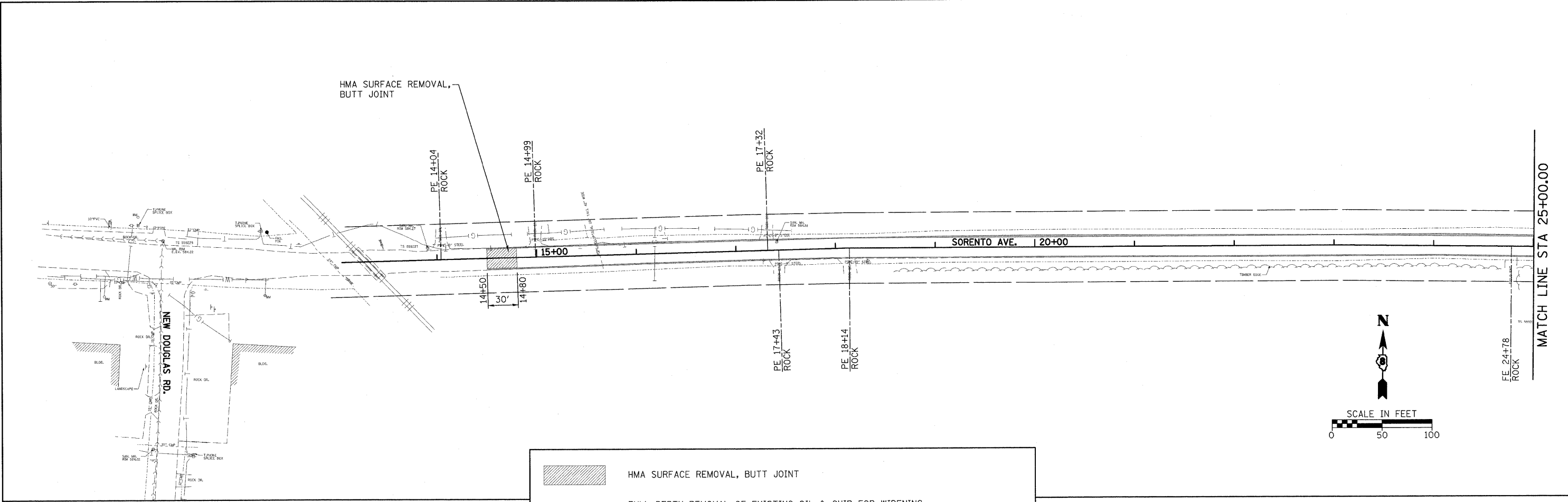
LOCATION	A	B
	INLET AND PIPE PROTECTION	TEMPORARY DITCH CHECK
STATION	EACH	EACH
LT. STA. 15+50.00		1
RT. STA. 15+68.00	1	
LT. STA. 17+45.00	1	
RT. STA. 17+55.00	1	
RT. STA. 18+26.00	1	
RT. STA. 21+50.00		1
LT. STA. 22+00.00		1
RT. STA. 24+90.00	1	
LT. STA. 27+00.00	1	
LT. STA. 28+70.00		1
RT. STA. 29+00.00		1
TOTAL	6	5

PAVEMENT MARKING SCHEDULE

LOCATION	TYPE	PAINT PAVEMENT MARKING - LINE	
		4" WHITE	4" YELLOW
STATION		FOOT	FOOT
LEFT STA. 14+50.00 TO STA. 30+00.00	SOLID	1550.0	
C (LEFT) STA. 14+50.00 TO STA. 19+50.00	SOLID		500.0
C (RIGHT) STA. 14+50.00 TO STA. 19+50.00	SKIP		130.0
CENTER STA. 19+50.00 TO STA. 30+00.00	SKIP		270.0
RIGHT STA. 14+50.00 TO STA. 30+00.00	SOLID	1550.0	
TOTALS		3100.0	900.0
USE		4000	

HENRY, MEISENHEIMER & GENDE, INC., 1075 LAKE ROAD, PO BOX 70, CARLYLE, IL 62231 PHONE (618) 594-3711 WWW.HMGENGINEERS.COM



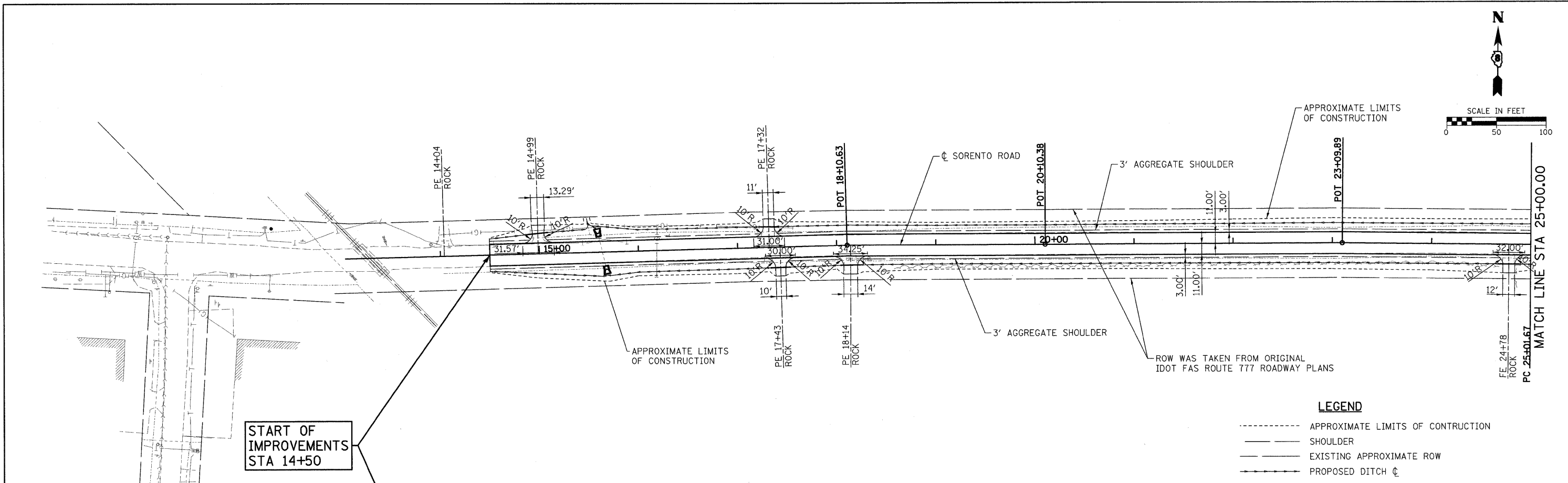


FILE NAME = H:\5592\5592.10\REMOVAL_SR_5592.1.dgn	USER NAME = _USERDESCR_	DESIGNED - DLD	REVISED -	<b>STATE OF ILLINOIS DEPARTMENT OF TRANSPORTATION</b>	<b>PAVEMENT REMOVAL &amp; EXISTING TOPOGRAPHY - SORENTO ROAD</b>			F.A.S. RTE. 777	SECTION 09-00080-01-RS	COUNTY BOND	TOTAL SHEETS 22	SHEET NO. 9
PLOT SCALE = 50.0000' / IN.		DRAWN - EDW	REVISED -					SCALE: 50			CONTRACT NO. 97394	
PLOT DATE = 7/9/2009		CHECKED -	REVISED -		SHEET NO. OF SHEETS STA. TO STA.			FED. ROAD DIST. NO. 8 (ILLINOIS) FED. AID PROJECT				
DATE = 6-9-09		DATE = 6-9-09	REVISED -									

HENRY, MEISENHEIMER & GENDE, INC., 1075 LAKE ROAD, PO BOX 70, CARLYLE, IL 62231, PHONE (618) 594-3711 WWW.HMENGINEERS.COM

PLAN	SURVEYED	BY	DATE
	ALIGNED		
	NOTE BOOK		
	NO. _____		
	FILE NAME		

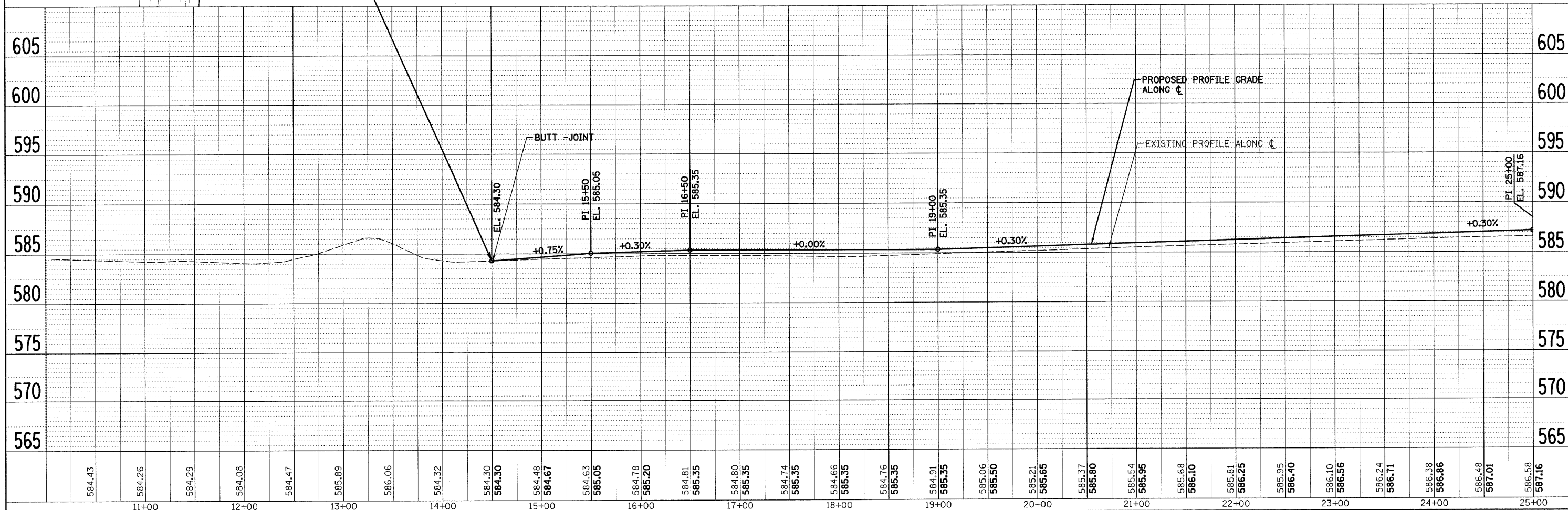
PROFILE	SURVEYED	BY	DATE
	PLOTTED		
	NOTE BOOK		
	NO. _____		
	STRUCTURE NOTATION		



START OF IMPROVEMENTS STA 14+50

**LEGEND**

- APPROXIMATE LIMITS OF CONSTRUCTION
- - - SHOULDER
- - - EXISTING APPROXIMATE ROW
- - - PROPOSED DITCH C



FILE NAME = H:\5592\5592\0\VP_SR_5592_01.dgn	USER NAME = .USERDESCR.	DESIGNED - DLD	REVISED -	<b>STATE OF ILLINOIS DEPARTMENT OF TRANSPORTATION</b>	<b>PLAN &amp; PROFILE - SORENTO ROAD</b>				F.A.S. RTE. 777	SECTION 09-00080-01-RS	COUNTY BOND	TOTAL SHEETS 22	SHEET NO. 10
	PLOT SCALE = 50.0000' / IN.	DRAWN - EDW	REVISED -		SCALE:	SHEET NO.	OF SHEETS	STA. 10+00	TO STA. 25+00	<b>CONTRACT NO. 97394</b>			
	PLOT DATE = 7/9/2009	CHECKED -	REVISED -							FED. ROAD DIST. NO. 8 ILLINOIS FED. AID PROJECT			
		DATE - 6-9-09	REVISED -										

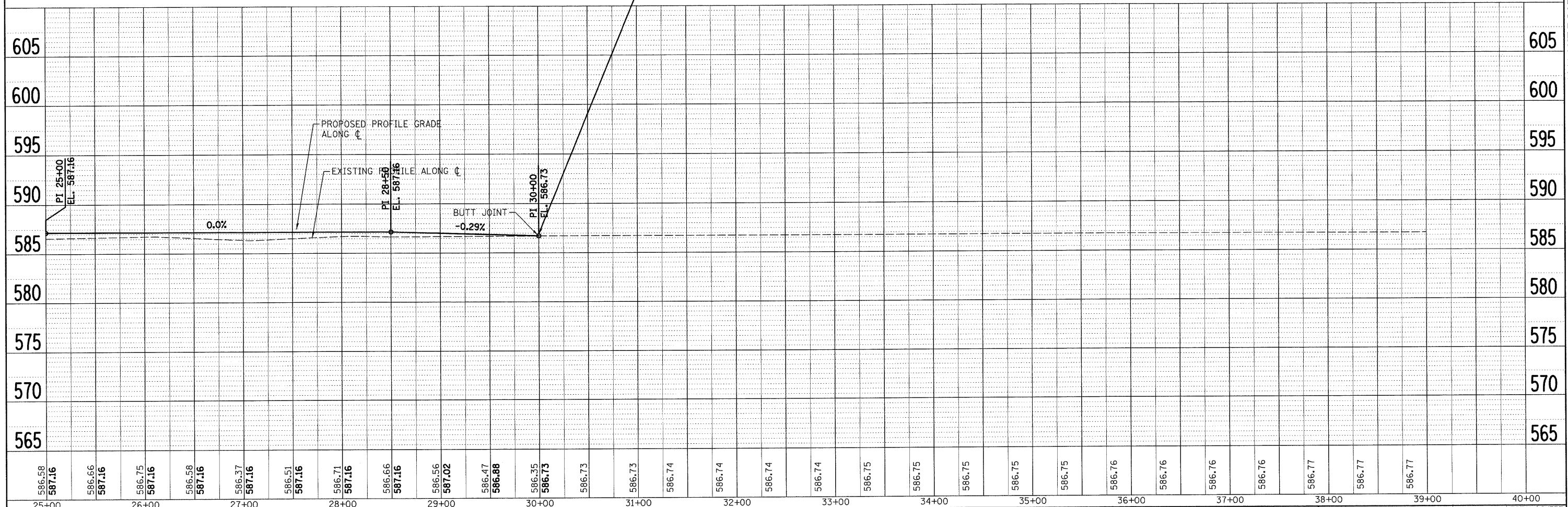
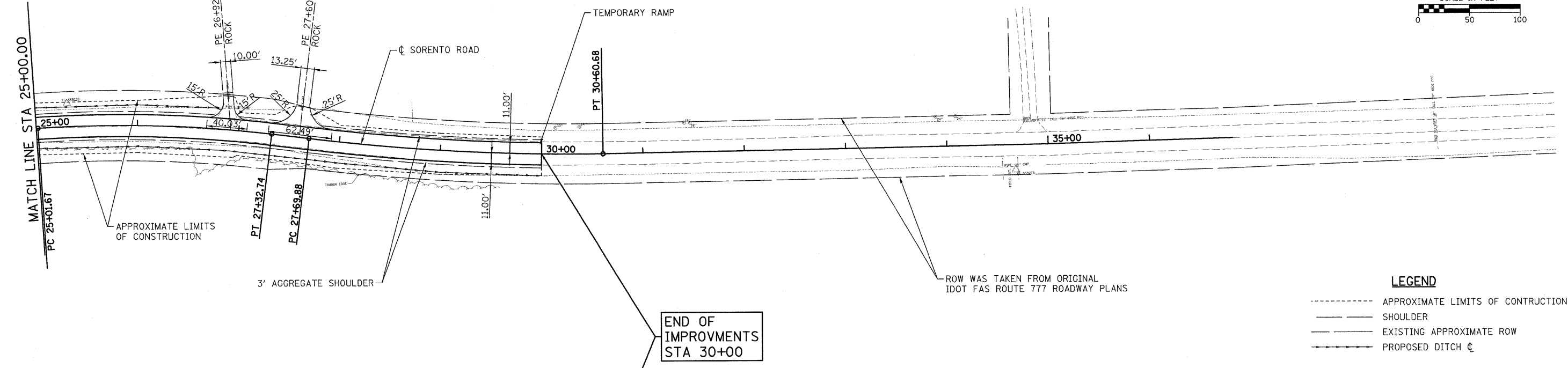
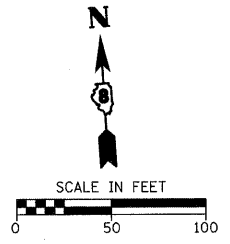
HENRY, MEISENHEIMER & GENDE, INC., 1075 LAKE ROAD, PO BOX 70, CARLYLE, IL 62231 PHONE (618) 594-3711 WWW.HMENGINEERS.COM

PLAN	SURVEYED	DATE
	NOTED	
	ALIGNED	
	CHECKED	
	BY	
	FILE NAME	
	NO.	

PROFILE	SURVEYED	DATE
	NOTED	
	ALIGNED	
	CHECKED	
	BY	
	FILE NAME	
	NO.	

EXIST. CURVE EXSOR-2  
 PI STA. = 26+17.54  
 $\Delta = 10^{\circ} 35' 30''$  (RT)  
 $D = 4^{\circ} 35' 01''$   
 $R = 1,250.00'$   
 $T = 115.87'$   
 $L = 231.07'$   
 $E = 5.36'$   
 P.C. STA. = 25+01.67  
 P.T. STA. = 27+32.74

EXIST. CURVE EXSOR-3  
 PI STA. = 29+15.50  
 $\Delta = 7^{\circ} 44' 59''$  (LT)  
 $D = 2^{\circ} 39' 54''$   
 $R = 2,150.00'$   
 $T = 145.62'$   
 $L = 290.80'$   
 $E = 4.93'$   
 P.C. STA. = 27+69.88  
 P.T. STA. = 30+60.68



FILE NAME = H:\5592\5592.10\PP_SR_5592_02.dgn	USER NAME = .USERDESCR.	DESIGNED - DLD	REVISED -	<b>STATE OF ILLINOIS</b> <b>DEPARTMENT OF TRANSPORTATION</b>	<b>PLAN &amp; PROFILE - SORENTO ROAD</b> SCALE: SHEET NO. OF SHEETS STA. 25+00 TO STA. 40+00				F.A.S. RTE. 777	SECTION 09-00080-01-RS	COUNTY	TOTAL SHEETS 22	SHEET NO. 11
PLOT SCALE = 50.0000' / IN.	CHECKED -	REVISOR -	CONTRACT NO. 97394										
PLOT DATE = 7/9/2009	DATE = 6-9-09	REVISOR -	FED. ROAD DIST. NO. 8 (ILLINOIS) FED. AID PROJECT										

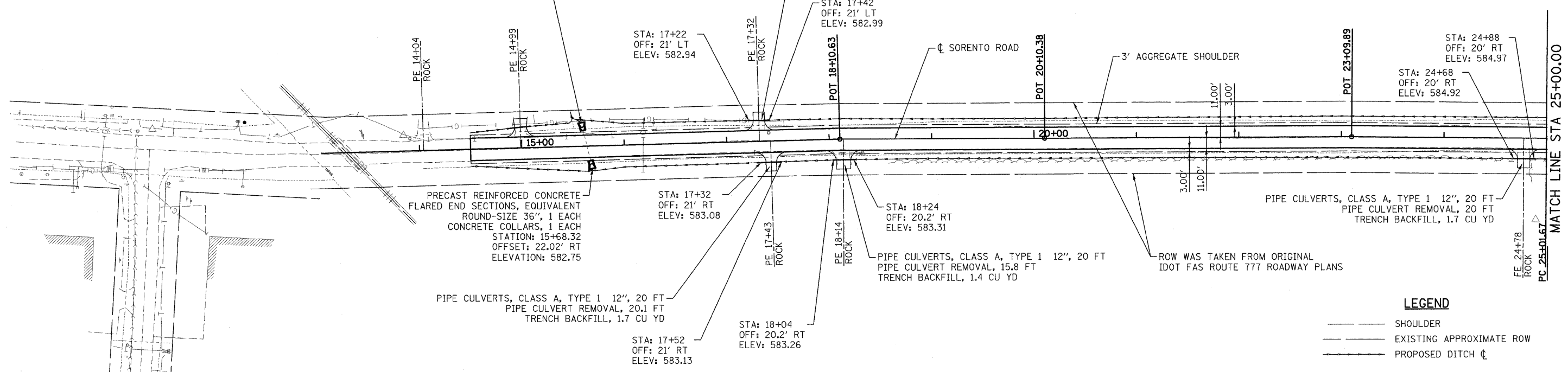
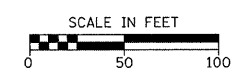
HENRY, MEISENHEIMER & GENDE, INC., 1075 LAKE ROAD, PO BOX 70, CARLYLE, IL 62231 PHONE (618) 594-3711 WWW.HMENGINEERS.COM

DATE	
BY	
SURVEYED	
DESIGNED	
CHECKED	
PLANNED	
NO. OF WAY CHECKED	
NO. OF FILE NAME	

DATE	
BY	
SURVEYED	
DESIGNED	
CHECKED	
PLANNED	
NO. OF WAY CHECKED	
NO. OF FILE NAME	

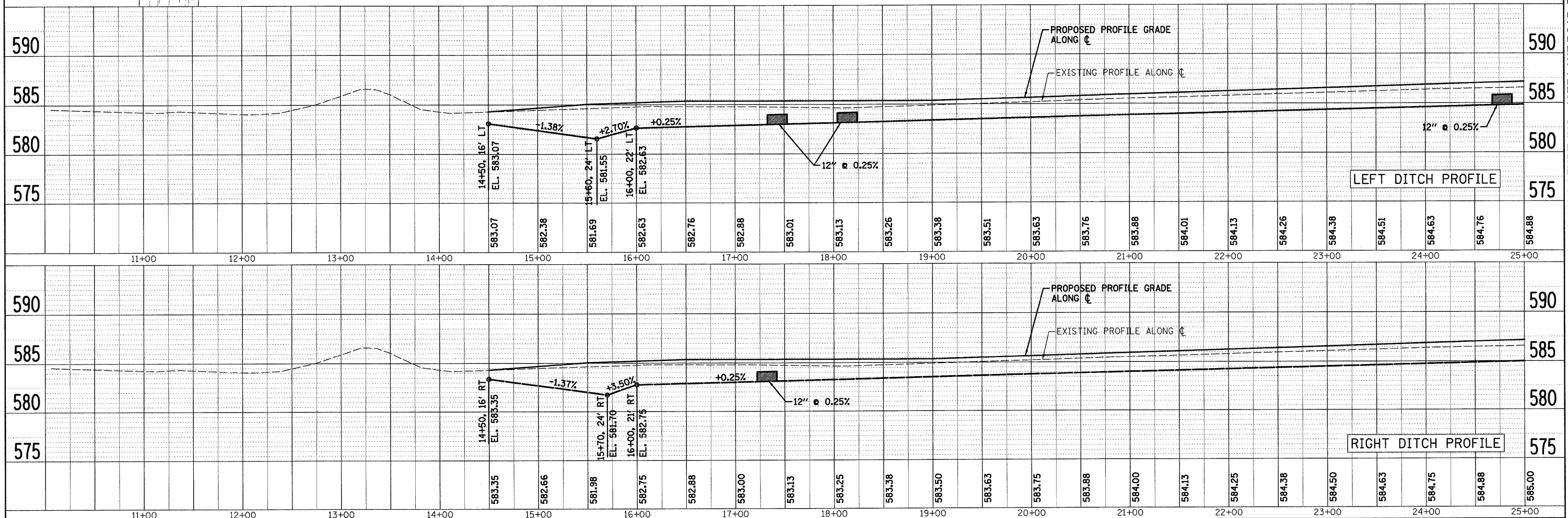
PRECAST REINFORCED CONCRETE  
FLARED END SECTIONS, EQUIVALENT  
ROUND-SIZE 36", 1 EACH  
CONCRETE COLLARS, 1 EACH  
STATION: 15+58.70  
OFFSET: 23.6' LT  
ELEVATION: 582.63

PIPE CULVERTS, CLASS A, TYPE 1 12", 20 FT  
PIPE CULVERT REMOVAL, 15.2 FT  
TRENCH BACKFILL, 1.3 CU YD



**LEGEND**

---	SHOULDER
---	EXISTING APPROXIMATE ROW
---	PROPOSED DITCH

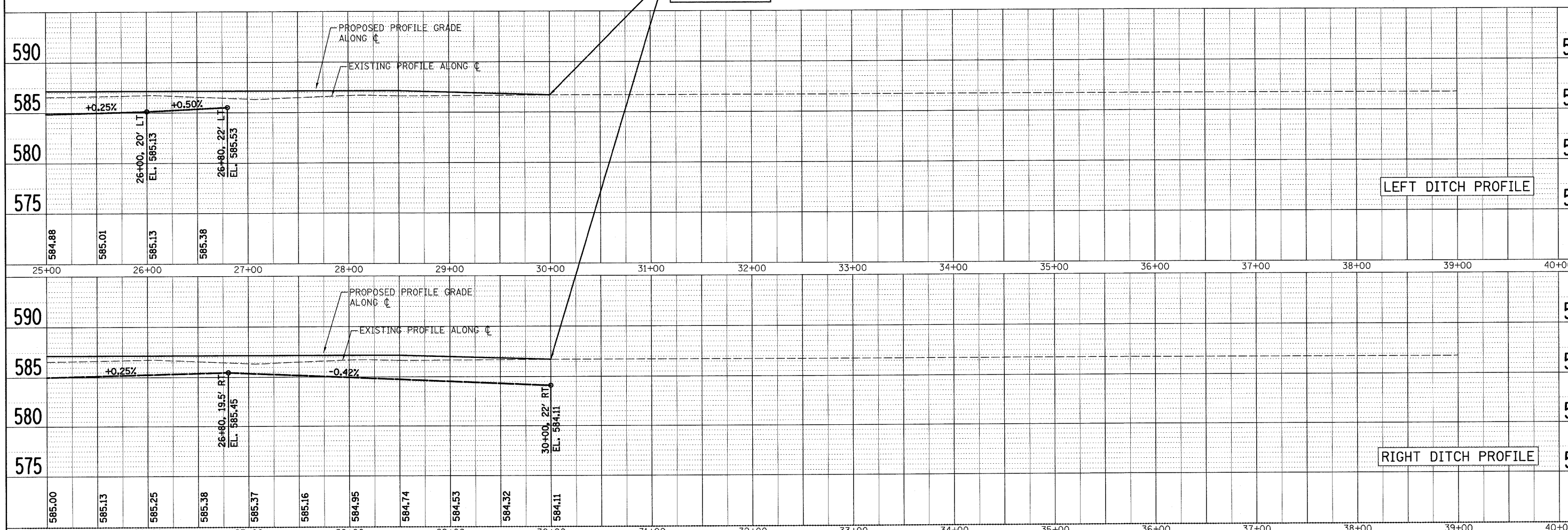
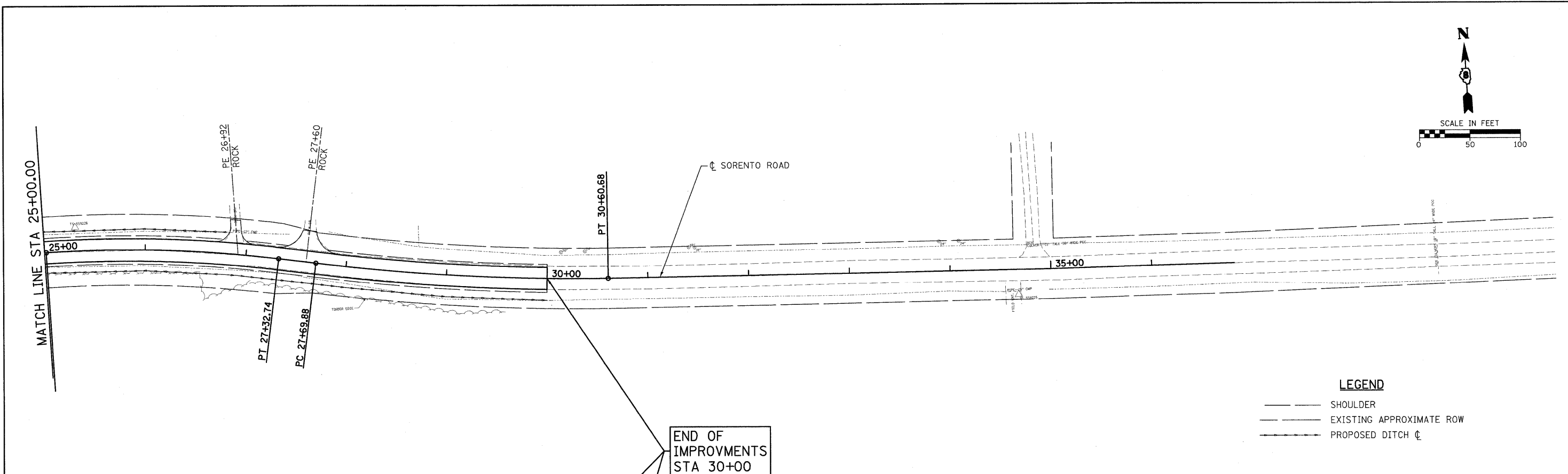


FILE NAME = H:\5592\5592\10\PP-DITCHS.5592_01.dgn	USER NAME = USERDESCR	DESIGNED - DLD	REVISOR -	F.A.S. RTE. 777	SECTION 09-00080-01-RS	COUNTY BOND	TOTAL SHEETS 22	SHEET NO. 12
PLLOT SCALE = 50.0000' / IN.	PLLOT DATE = 7/9/2009	DRAWN -	REVISOR -	CONTRACT NO. 97394			FED. ROAD DIST. NO. 8 ILLINOIS FED. AID PROJECT	
<p align="center"><b>STATE OF ILLINOIS</b> <b>DEPARTMENT OF TRANSPORTATION</b></p>				<p align="center"><b>PLAN &amp; PROFILE - SORENTO DRAINAGE</b></p>			<p>SCALE: SHEET NO. OF SHEETS STA. 10+00 TO STA. 25+00</p>	

HENRY, MEISENHEIMER & GENDE, INC., 1075 LAKE ROAD, PO BOX 70, CARLYLE, IL 62231 PHONE (618) 594-3711 WWW.HMENGINEERS.COM

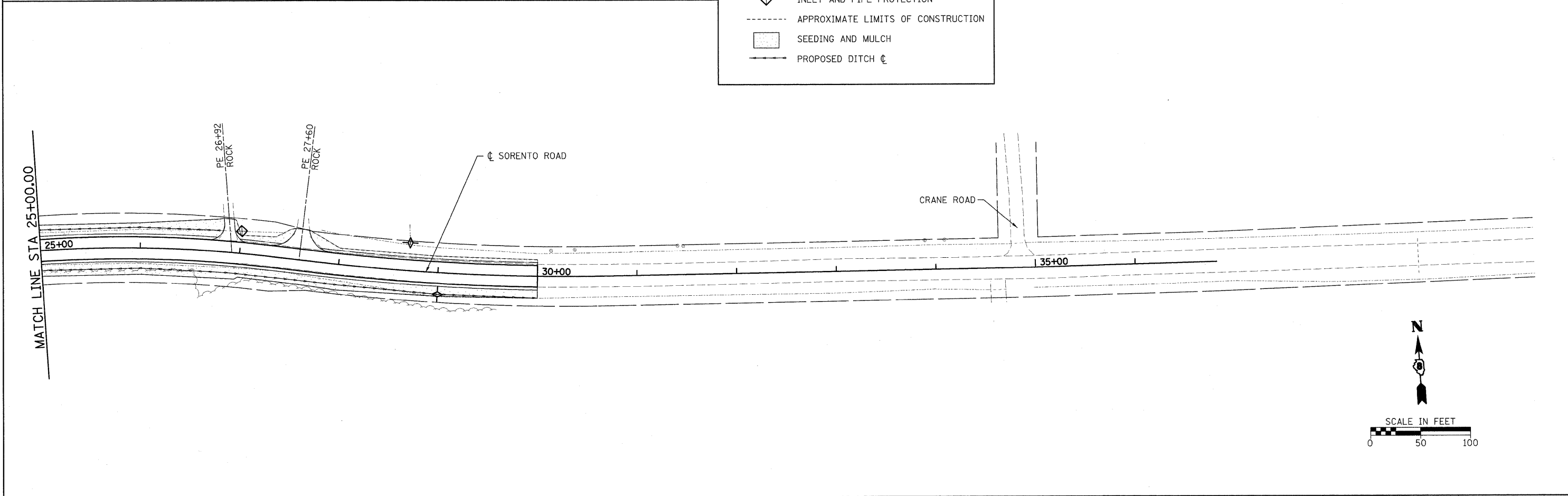
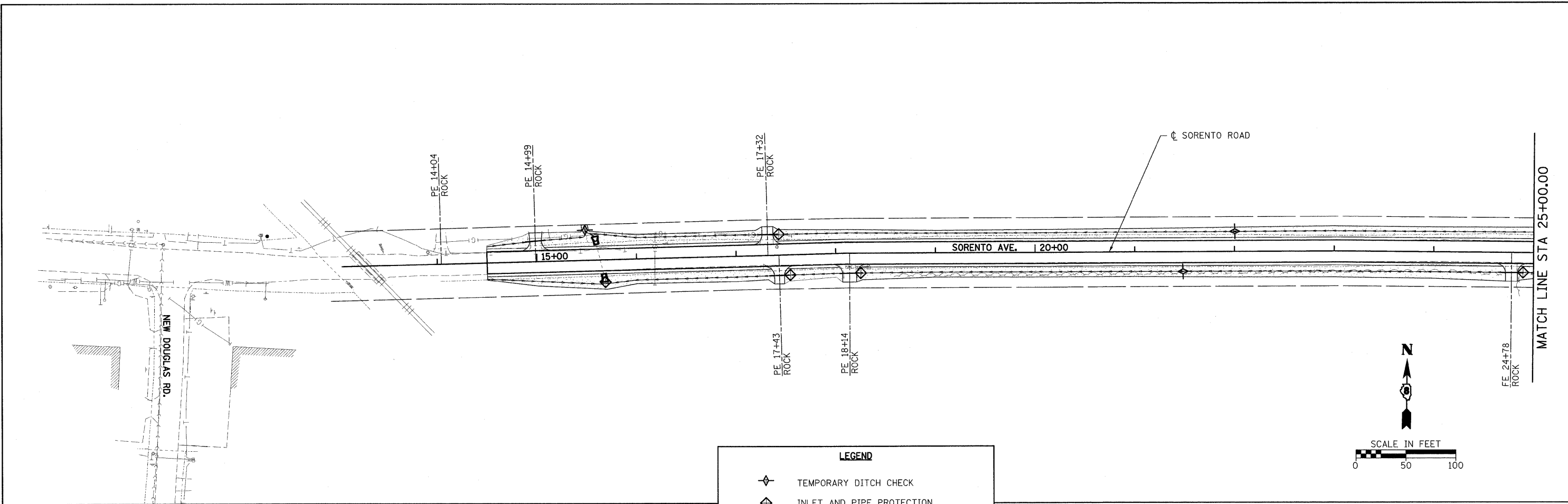
PLAN	SURVEYED	BY	DATE
	NOTED		
	ALIGNED		
	CHECKED		
	PT. OF WAY		
	CHECKED		
	NO.		
	FILE NAME		

PROFILE	SURVEYED	BY	DATE
	NOTED		
	CHECKED		
	PT. OF WAY		
	CHECKED		
	NO.		
	FILE NAME		



FILE NAME = H:\5592\5592.10\PP_DITCHS.5592.02.dgn	USER NAME = .USERDESCR.	DESIGNED - DLD	REVISOR -	SCALE: 50	SHEET NO. OF SHEETS	STA. 25+00 TO STA. 40+00	F.A.S. RTE. 777	SECTION 09-00080-01-RS	COUNTY BOND	TOTAL SHEETS 22	SHEET NO. 13
PLOT SCALE = 50.0000' / IN.	PLOT DATE = 7/9/2009	CHECKED - EDW	REVISOR -	STATE OF ILLINOIS DEPARTMENT OF TRANSPORTATION			PLAN & PROFILE - SORENTO DRAINAGE			CONTRACT NO. 97394	
		DRAWN -	REVISOR -				FED. ROAD DIST. NO. 8 [ILLINOIS] FED. AID PROJECT				
		CHECKED - 6-17-08	REVISOR -								

H.M.A.G. NO. 5592.B.G. NO. 5592 HENRY, MEISENHEIMER & GENDE, INC., 1075 LAKE ROAD, PO BOX 70, CARLYLE, IL 62231 PHONE (618) 594-3711 WWW.HMENGINEERS.COM



**LEGEND**

- TEMPORARY DITCH CHECK
- INLET AND PIPE PROTECTION
- APPROXIMATE LIMITS OF CONSTRUCTION
- SEEDING AND MULCH
- PROPOSED DITCH  $\phi$

FILE NAME =  
H:\5592\5592\10\EC\_SR\_5592\_1.dgn

USER NAME = .USERDESCR.  
PLOT SCALE = 50.0000' / IN.  
PLOT DATE = 7/9/2009

DESIGNED - DLD  
DRAWN - EDW  
CHECKED -  
DATE - 6-9-09

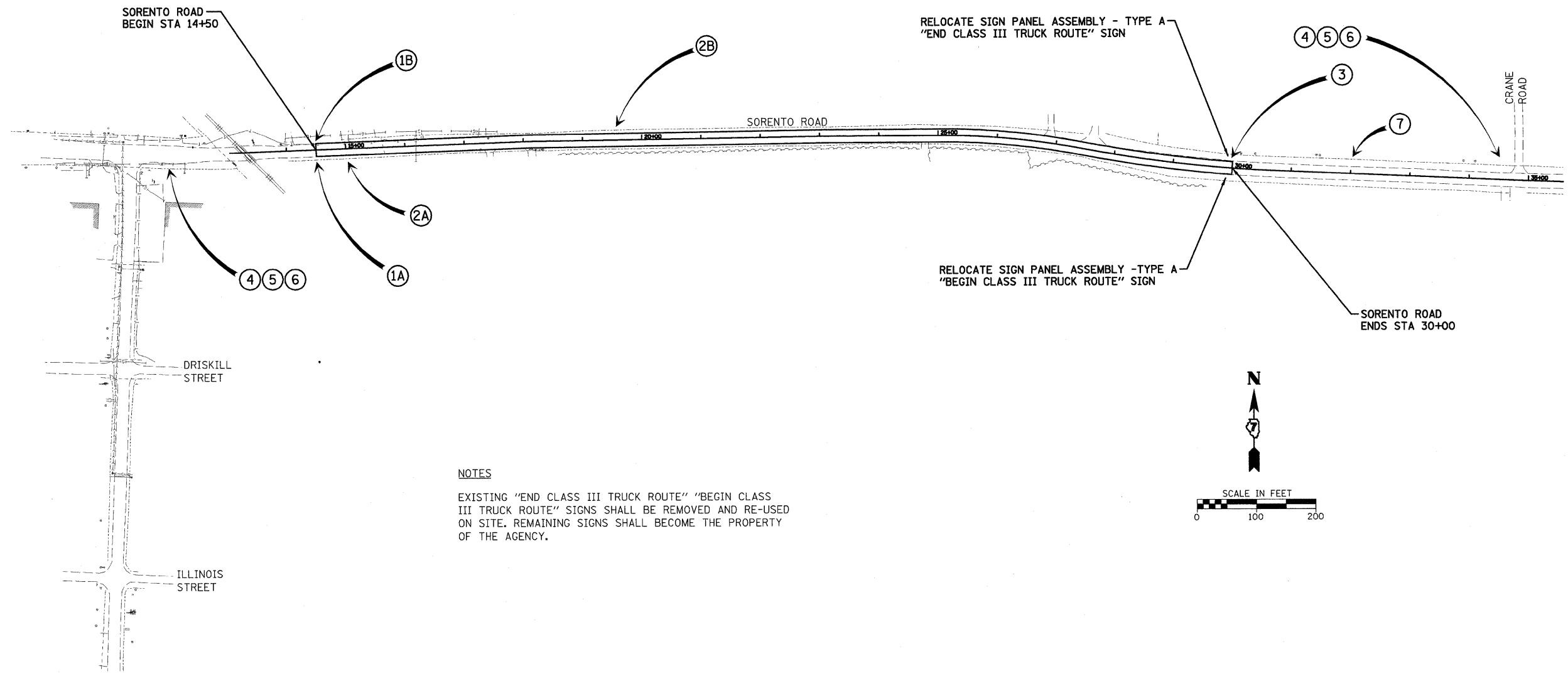
REVISED -  
REVISED -  
REVISED -  
REVISED -

**STATE OF ILLINOIS  
DEPARTMENT OF TRANSPORTATION**

**EROSION CONTROL - SORENTO ROAD**

SCALE: 50      SHEET NO.    OF    SHEETS    STA. 25+00    TO STA. 40+00

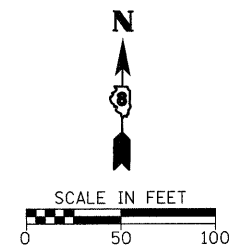
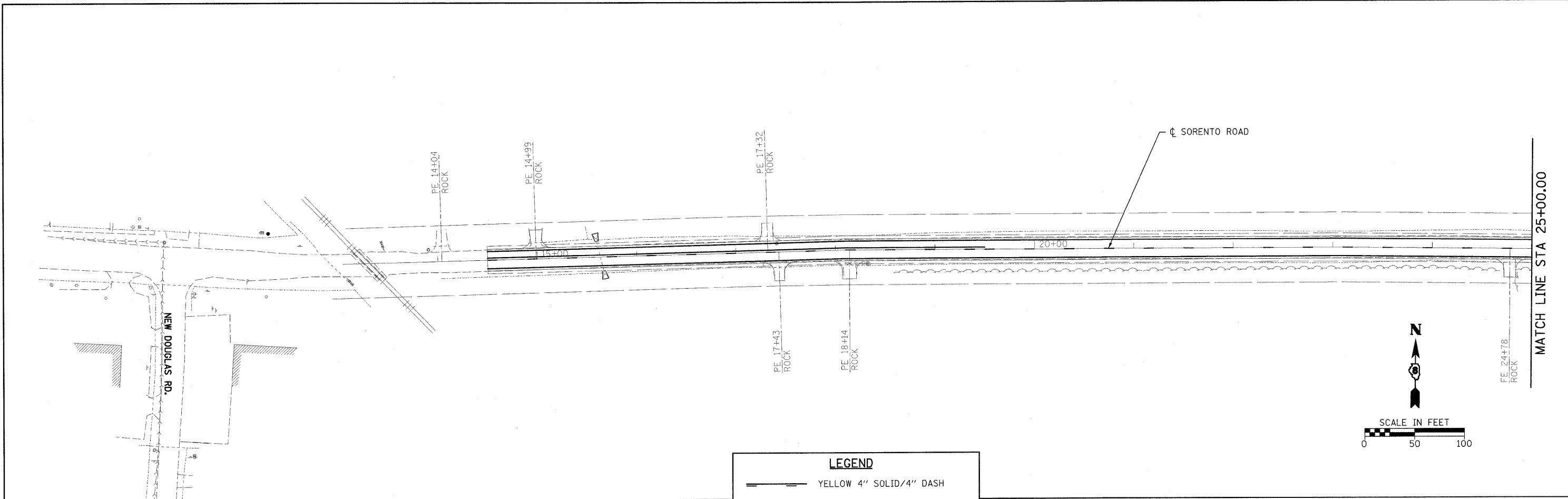
F.A.S RTE.	SECTION	COUNTY	TOTAL SHEETS	SHEET NO.
777	09-00080-01-RS	BOND	22	14
<b>CONTRACT NO. 97394</b>				
FED. ROAD DIST. NO. 8 ILLINOIS FED. AID PROJECT				



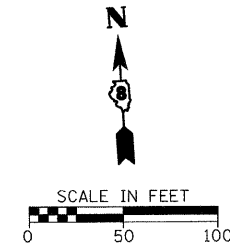
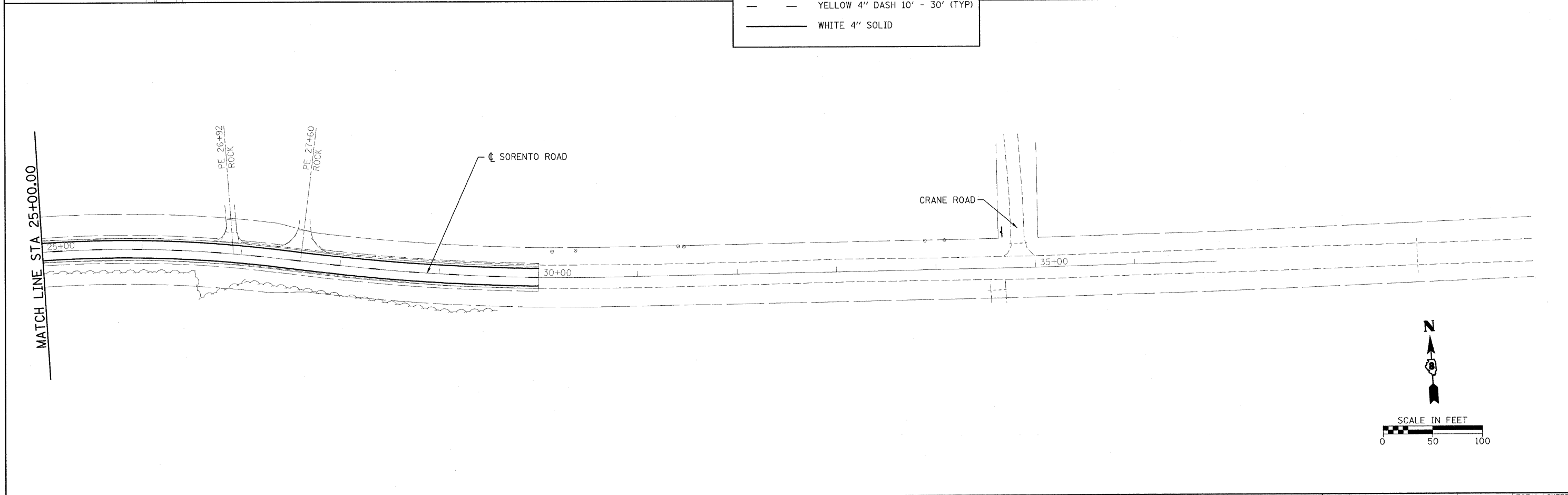
**NOTES**  
 EXISTING "END CLASS III TRUCK ROUTE" "BEGIN CLASS III TRUCK ROUTE" SIGNS SHALL BE REMOVED AND RE-USED ON SITE. REMAINING SIGNS SHALL BECOME THE PROPERTY OF THE AGENCY.

SIGNS TO BE RELOCATED					SEE AMERICAN RECOVERY AND REINVESTMENT ACT SIGNING BDE SPECIAL PROVISIONS			
1A	1B	2A	2B	3	4	5	6	7

H.M.&G. NO. 5592.10 HENRY, MEISENHEIMER & GENDE, INC., 1075 LAKE ROAD, PO BOX 70, CARLYLE, IL 62231 PHONE (618) 594-3711 WWW.HMENGINEERS.COM



LEGEND	
	YELLOW 4" SOLID/4" DASH
	YELLOW 4" DASH 10' - 30' (TYP)
	WHITE 4" SOLID



FILE NAME = HA\5592\5592.10\PM\_SR\_5592.1.dgn  
 USER NAME = .USERDESCR.  
 PLOT SCALE = 50.0000' / IN.  
 PLOT DATE = 7/9/2009

DESIGNED - DLD  
 DRAWN - EDW  
 CHECKED -  
 DATE - 6-9-09

REVISED -  
 REVISED -  
 REVISED -  
 REVISED -

**STATE OF ILLINOIS  
 DEPARTMENT OF TRANSPORTATION**

**PAVEMENT MARKING**

SCALE: 50 SHEET NO. OF SHEETS STA. 25+00 TO STA. 40+00

F.A.S. RTE.	SECTION	COUNTY	TOTAL SHEETS	SHEET NO.
777	09-00080-01-RS	BOND	22	16
CONTRACT NO. 97394				
FED. ROAD DIST. NO. 8 ILLINOIS FED. AID PROJECT				



**NOTES:**

-CONCRETE COLLARS ARE REQUIRED WHEN CONNECTING TWO DIFFERENT PIPE MATERIALS, JOINING EXISTING STORM SEWER TO PROPOSED STORM SEWER, OR WHEN PERMITTED PULL AT PIPE JOINTS IS EXCEEDED. PULLING OF JOINTS SHALL BE LIMITED TO 3/4" FROM NORMAL CLOSURE FOR PIPE SIZE 36" OR SMALLER AND TO 1" FOR PIPE SIZE 39" OR LARGER.

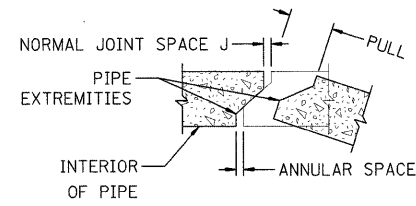
-VALUE OF ANGLE "A" SHALL BE SHOWN ON PLANS IF GREATER THAN 0°.

-CONCRETE COLLARS SHALL NOT BE USED FOR A SIZE CHANGE.

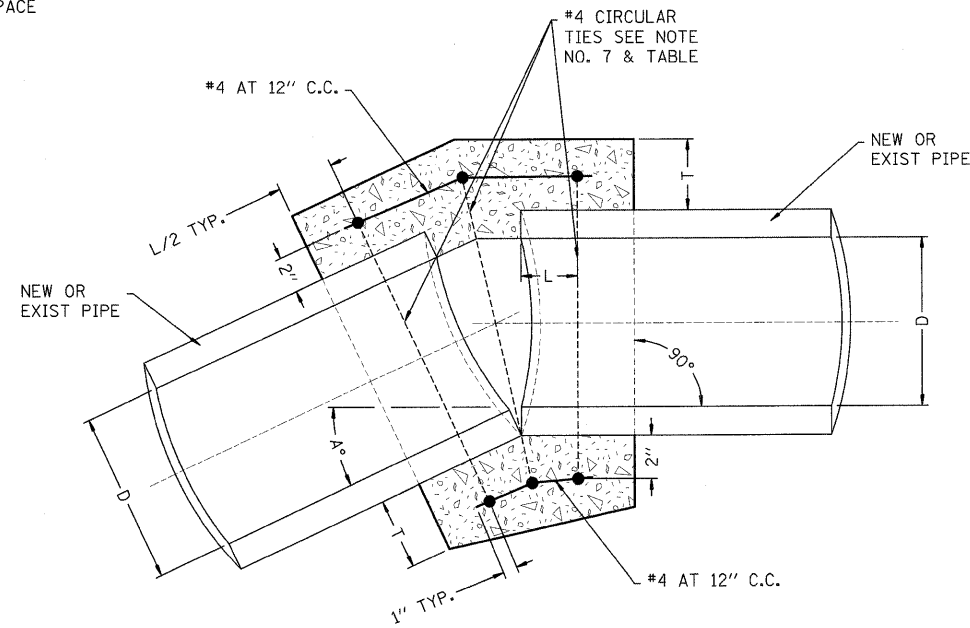
-A REMOVABLE INTERIOR FORM SHALL BE USED FOR POURS.

-REINFORCING SHALL BE USED FOR PIPES LARGER THAN 24" AND ON ALL PIPES WHERE THE SPACE BETWEEN PIPE EXTREMITIES IS 2 1/2" OR LARGER.

-ALL CONCRETE SHALL BE CLASS SI CONCRETE.



**JOINT PULL DETAIL**

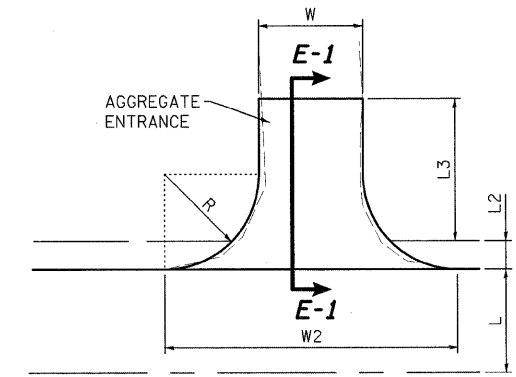


**TYPICAL PLAN**

D	12"	15"	18"	21"	24"	27"	30"	33"	36"	39"	42"	45"	48"	51"	54"	57"	60"	66"
L	12"	12"	12"	12"	12"	12"	12"	18"	18"	18"	18"	18"	18"	18"	18"	18"	21"	21"
T	4"	4"	5"	5"	6"	7"	7"	8"	9"	9"	9"	10"	10"	10"	10"	10"	11"	11"
J	1/16"	1/16"	1/16"	1/4"	1/4"	1/4"	5/16"	5/16"	5/16"	5/16"	5/16"	5/16"	3/8"	3/8"	3/8"	3/8"	3/8"	3/8"
NO. OF TIES	3	3	3	3	3	3	3	4	4	4	4	4	4	4	4	4	5	5

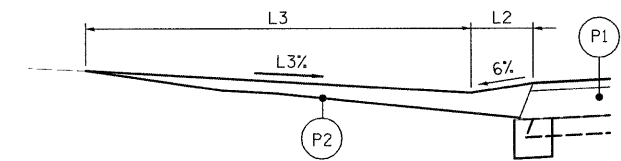
**CONCRETE COLLAR DETAIL**

(NOT TO SCALE)



**PLAN**

SHOWING AGGREGATE ENTRANCE



**SECTION E-1 & E-2**

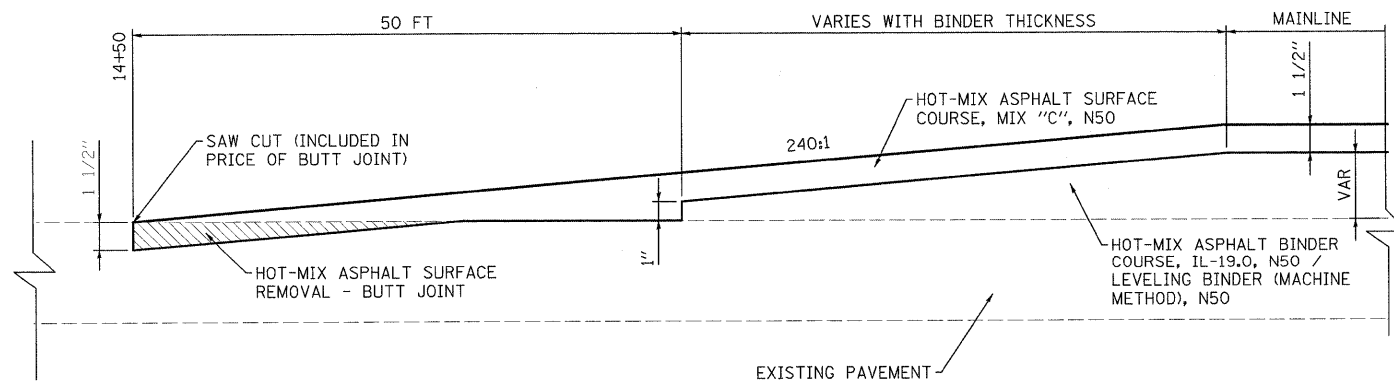
(NOT TO SCALE)

(P1) PROPOSED ROADWAY PAVEMENT

(P2) AGGREGATE BASE COURSE, TYPE A

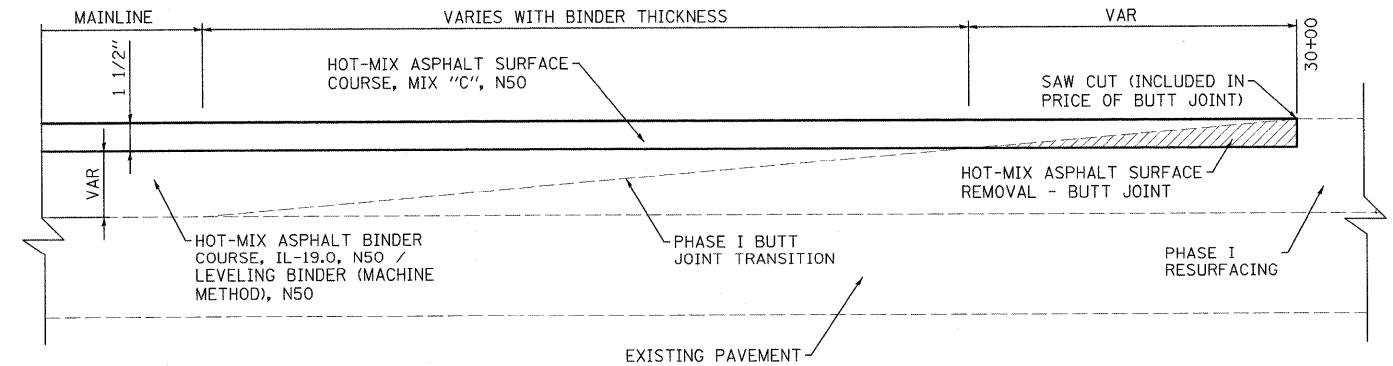
**ENTRANCE DETAILS**

(NOT TO SCALE)



**BUTT JOINT DETAILS - WEST END (14+50)**

(NOT TO SCALE)



**BUTT JOINT DETAILS - EAST END (30+00)**

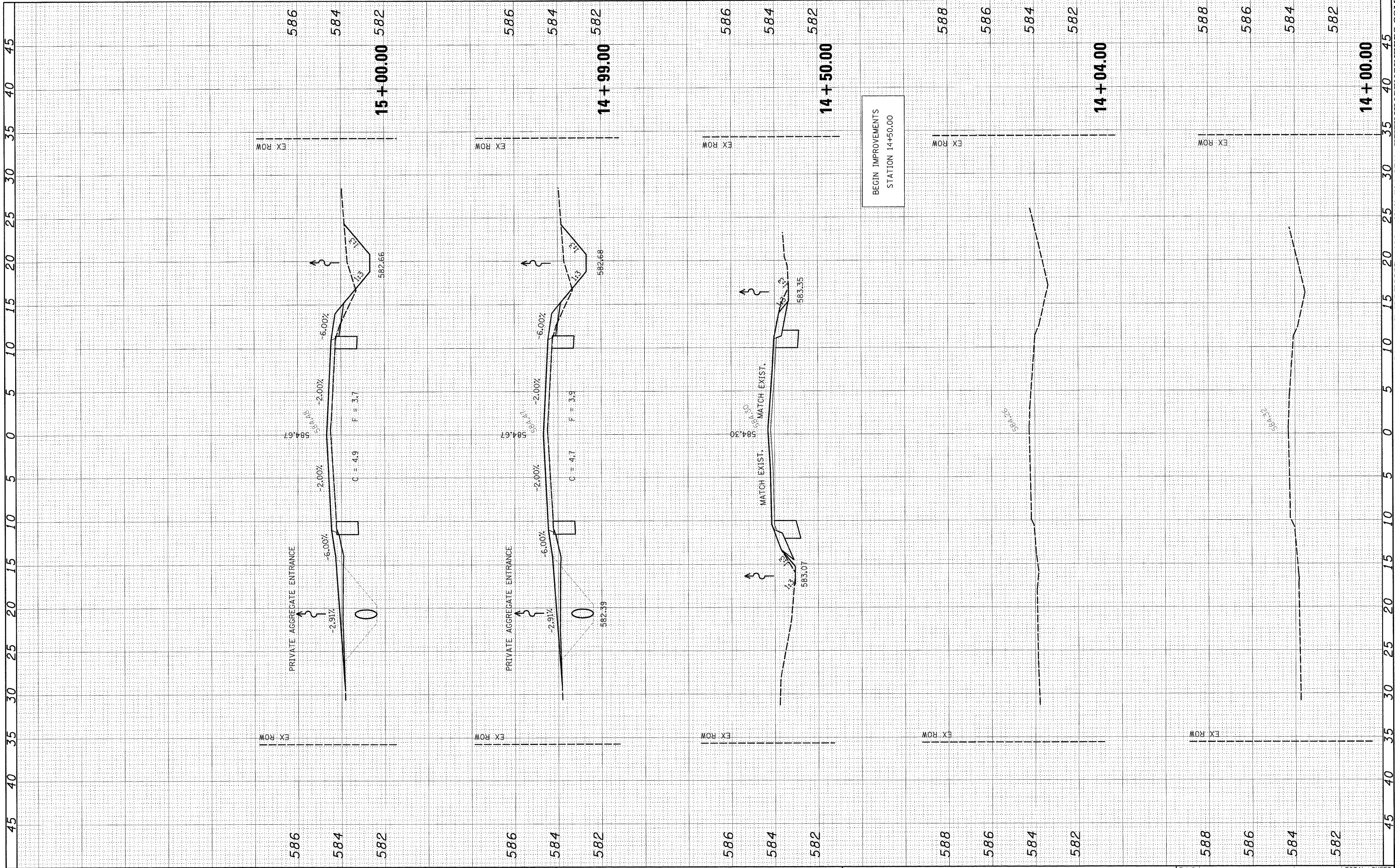
(NOT TO SCALE)

FILE NAME = F:\5592\5592.18\Details.5592.dgn	USER NAME = .USERDESCR.	DESIGNED - DLD	REVISED -	<b>STATE OF ILLINOIS DEPARTMENT OF TRANSPORTATION</b>	<b>DETAILS</b>				F.A.S RTE. 777	SECTION 09-00080-01-RS	COUNTY BOND	TOTAL SHEETS 22	SHEET NO. 17
PLOT SCALE = 5,0000 ' / IN.	CHECKED -	DRAWN - EDW	REVISED -		SCALE:	SHEET NO.	OF	SHEETS	STA.	TO STA.	<b>CONTRACT NO. 97394</b>		
PLOT DATE = 7/9/2009	DATE - 6-9-09	CHECKED -	REVISED -		FED. ROAD DIST. NO. 8 [ILLINOIS] FED. AID PROJECT								
		DATE - 6-9-09	REVISED -										

HENRY, MEISENHEIMER & GENDE, INC., 1075 LAKE ROAD, PO BOX 70, CARLYLE, IL 62231 PHONE (618) 594-3711 WWW.HMENGINEERS.COM

FINAL SURVEY NO.	SURVEYED BY	DATE
NO.	PLOTTED BY	
	REMARKS	
	AREAS CHECKED	

ORIGINAL SURVEY NO.	SURVEYED BY	DATE
NO.	PLOTTED BY	
	REMARKS	
	AREAS CHECKED	



FILE NAME = H:\5592\5592.10\sa\_SorentoRd\_3to1\_5592\_F.dgn

USER NAME = .USERDESCR.  
 PLOT SCALE = 5.00000 ' / IN.  
 PLOT DATE = 7/9/2004

DESIGNED - DLD  
 DRAWN - KOJ  
 CHECKED -  
 DATE - 1-17-08

REVISED -  
 REVISED -  
 REVISED -  
 REVISED -

**STATE OF ILLINOIS  
 DEPARTMENT OF TRANSPORTATION**

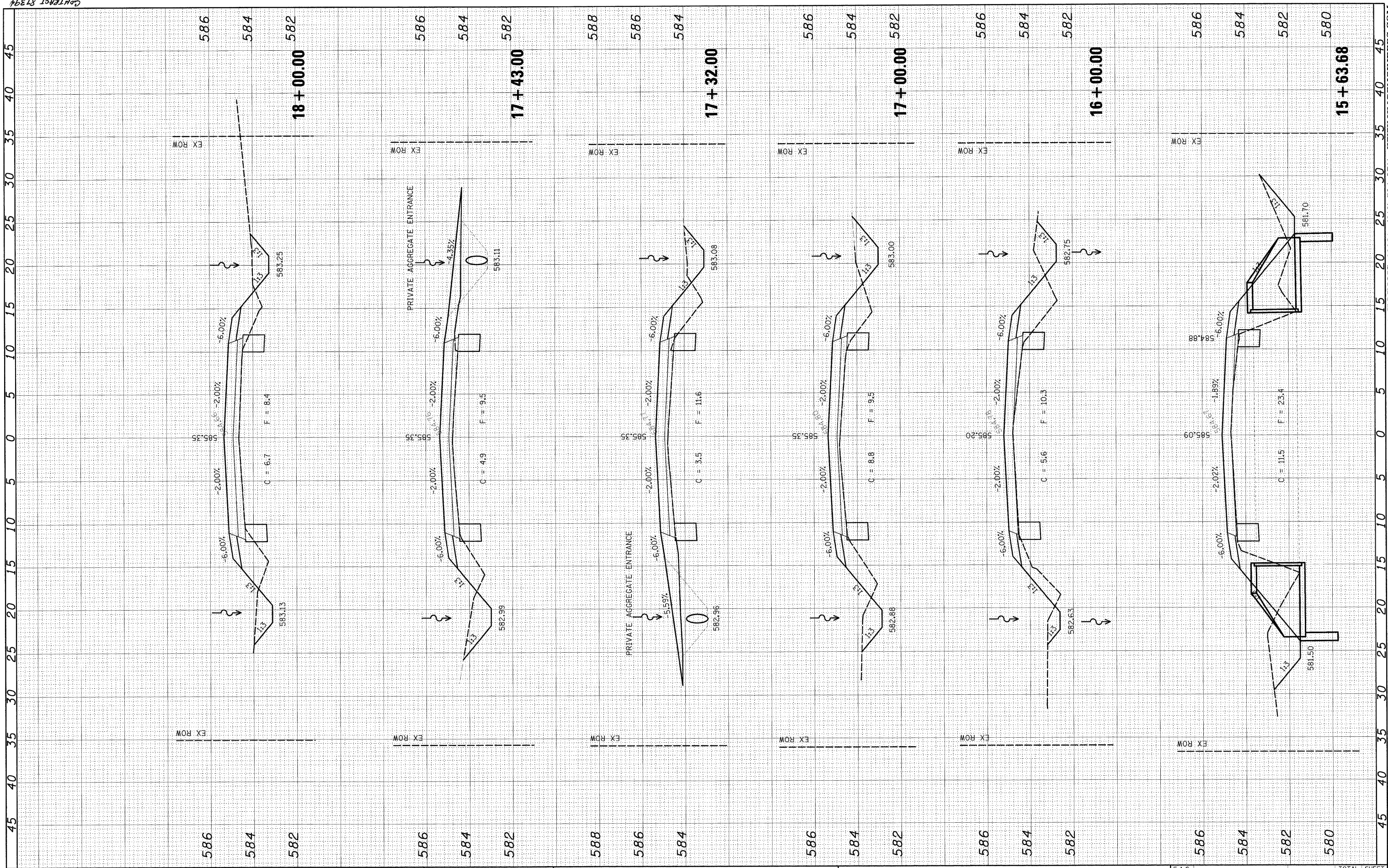
**CROSS SECTIONS - SORENTO ROAD**

SCALE: SHEET NO. OF SHEETS STA. 14+00.00 TO STA. 15+00.00

F.A.S. RTE.	SECTION	COUNTY	TOTAL SHEETS	SHEET NO.
777	09-00080-01-RS	BOND	22	18
CONTRACT NO.				
FED. ROAD DIST. NO. ILLINOIS FED. AID PROJECT				

FINAL SURVEY	SURVEYED	BY	DATE
NOTE BOOK	PLOTTED		
NO.	IS LATE		
	AREAS CHECKED		

ORIGINAL SURVEY	SURVEYED	BY	DATE
NOTE BOOK	PLOTTED		
NO.	IS LATE		
	AREAS CHECKED		



FILE NAME = H:\592\592\10\sa\_SorentoRd\_3to1\_592\_F.dgn  
 USER NAME = .USERDESCR.  
 DESIGNED - DLD  
 DRAWN - KOJ  
 CHECKED -  
 DATE - 1-17-08

PLLOT SCALE = 5.0000' / IN.  
 PLOT DATE = 7/9/2009

REVISD -  
 REVISD -  
 REVISD -  
 REVISD -

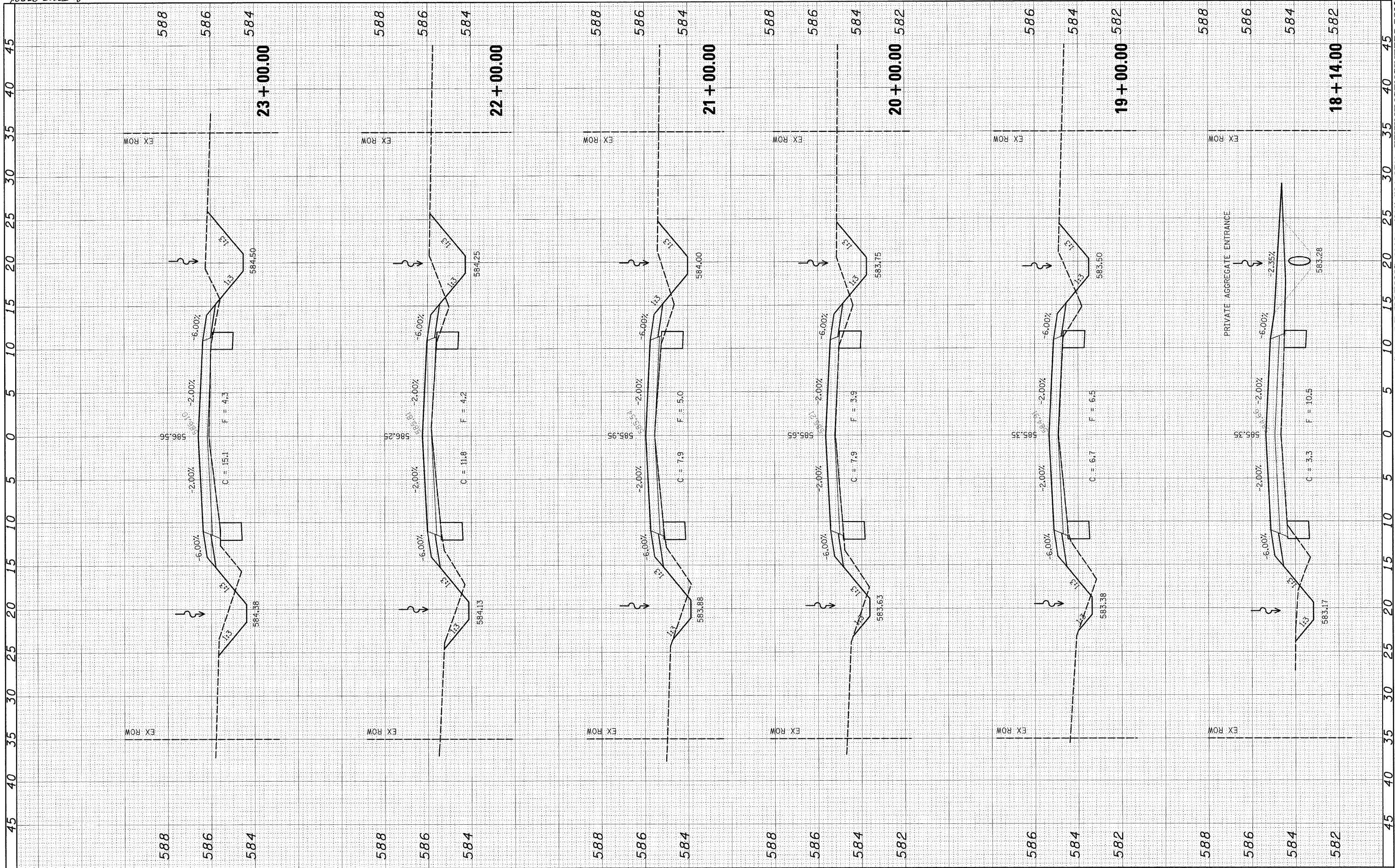
STATE OF ILLINOIS  
 DEPARTMENT OF TRANSPORTATION

CROSS SECTIONS - SORENTO ROAD  
 SCALE: SHEET NO. OF SHEETS STA. 15+63.68 TO STA. 18+00.00

F.A.S. RTE.	SECTION	COUNTY	TOTAL SHEETS	SHEET NO.
777	09-00080-01-RS	BOND	22	19
CONTRACT NO.				
FED. ROAD DIST. NO. ILLINOIS FED. AID PROJECT				

FINAL SURVEY	SURVEYED	DATE
NOTE BOOK	PLOTTED	
NO.	AREAS	
	CHECKED	

ORIGINAL SURVEY	SURVEYED	DATE
NOTE BOOK	PLOTTED	
NO.	AREAS	
	CHECKED	



FILE NAME =	USER NAME =	DESIGNED -	REVISED -
H:\5592\5592.10\ss_SorentoRd_3tol_5592.F.dgn	_USERDESCR_	DLD	
		DRAWN -	REVISED -
		KOJ	
		CHECKED -	REVISED -
		DATE -	REVISED -
		1-17-08	

PLOT SCALE =	5.0000' / IN.
PLOT DATE =	7/9/2009

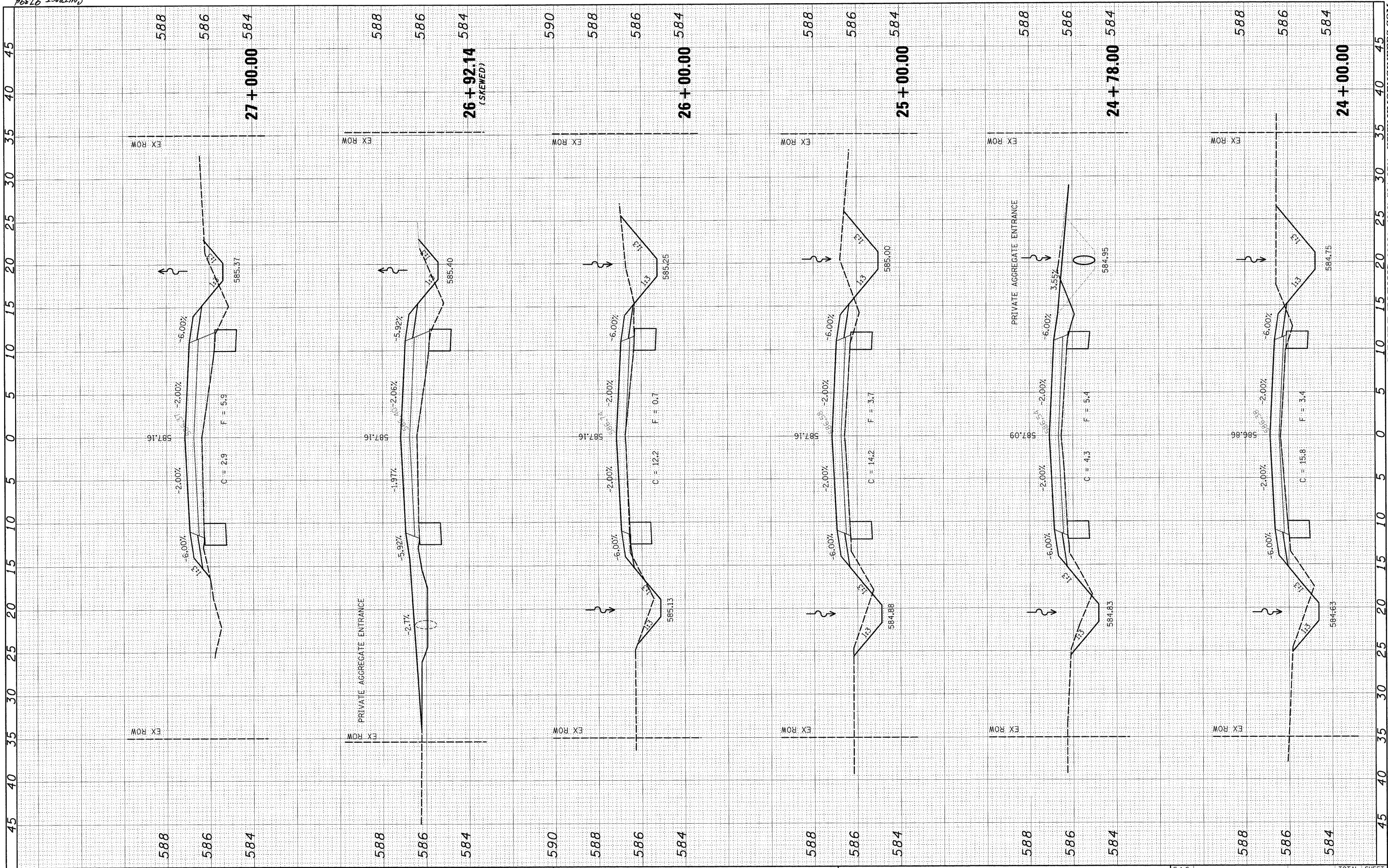
**STATE OF ILLINOIS  
DEPARTMENT OF TRANSPORTATION**

<b>CROSS SECTIONS - SORENTO ROAD</b>			
SCALE:	SHEET NO.	OF SHEETS	STA. 18+14.00 TO STA. 23+00.00

F.A.S. RTE.	SECTION	COUNTY	TOTAL SHEETS	SHEET NO.
777	09-00080-01-RS	BOND	22	20
CONTRACT NO.				
FED. ROAD DIST. NO. ILLINOIS FED. AID PROJECT				

FINAL SURVEY	SURVEYED	BY	DATE
NOTE BOOK NO.	PLOTTED		
	TEMPLATE		
	AREAS CHECKED		

ORIGINAL SURVEY	SURVEYED	BY	DATE
NOTE BOOK NO.	PLOTTED		
	TEMPLATE		
	AREAS CHECKED		



FILE NAME = H:\5592\5592.10\ss\_SorentoRd\_3to1\_5592\_F.dgn  
 USER NAME = .USERDESCR.

DESIGNED - DLD  
 DRAWN - KOJ  
 CHECKED -  
 DATE - 1-17-08

REVISIONS:  
 REVISION -  
 REVISION -  
 REVISION -

**STATE OF ILLINOIS  
 DEPARTMENT OF TRANSPORTATION**

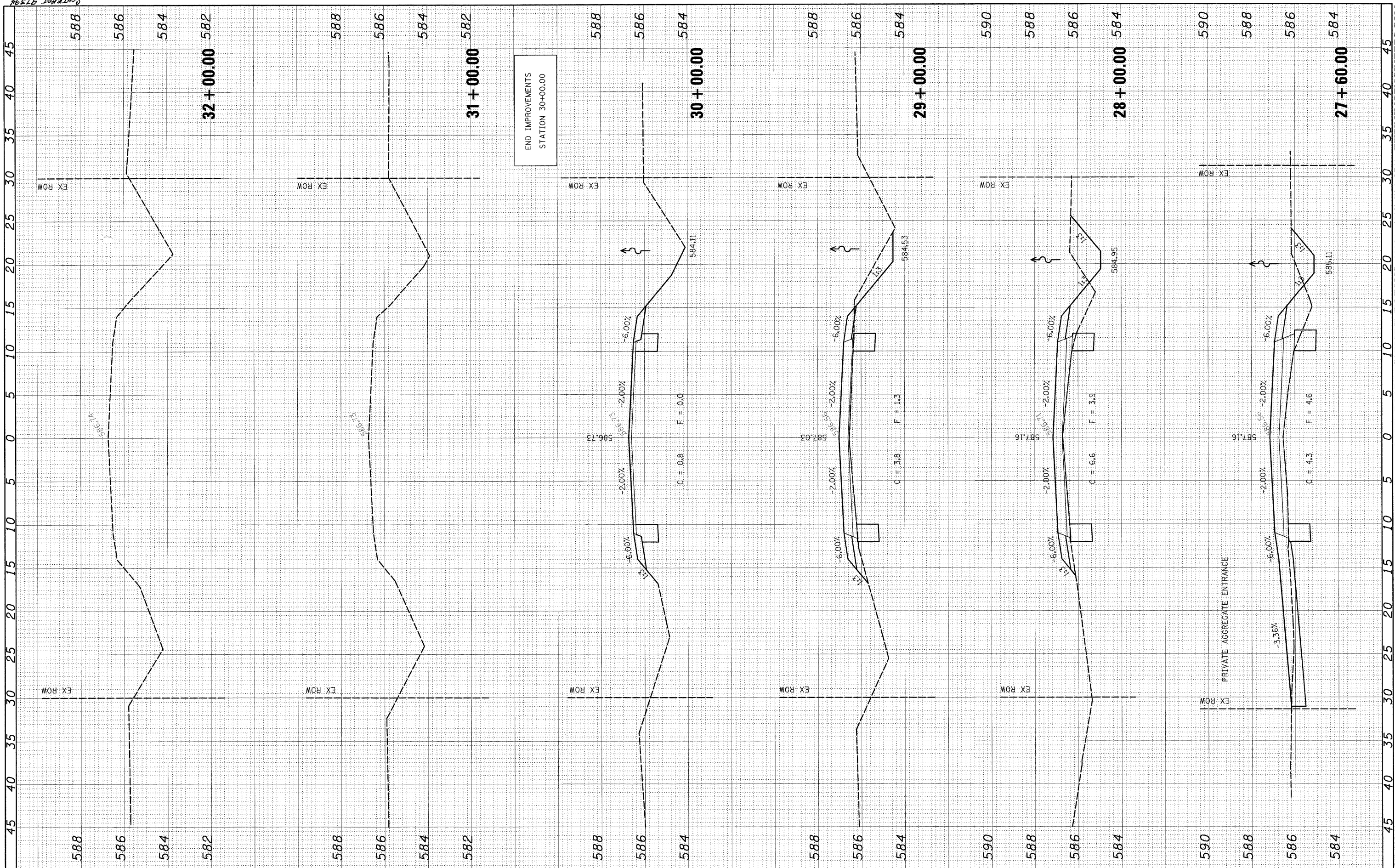
**CROSS SECTIONS - SORENTO ROAD**  
 SCALE: SHEET NO. OF SHEETS STA. 24+00.00 TO STA. 27+00.00

F.A.S. RTE. 777	SECTION 09-00080-01-RS	COUNTY BOND	TOTAL SHEETS 22	SHEET NO. 21
CONTRACT NO.				
FED. ROAD DIST. NO. ILLINOIS FED. AID PROJECT				

Sheet 22  
 COUNTY 97594

FINAL SURVEY NO.	BY	DATE
SURVEYED		
PLOTTED		
NOTE BOOK		
AREAS CHECKED		

ORIGINAL SURVEY NO.	BY	DATE
SURVEYED		
PLOTTED		
NOTE BOOK		
AREAS CHECKED		



FILE NAME = H:\5592\5592.10\ss_SorentoRd_3tol_5592_F.dgn	USER NAME = USERDESCR.	DESIGNED - DLD	REVISED -	<b>STATE OF ILLINOIS DEPARTMENT OF TRANSPORTATION</b>	<b>CROSS SECTIONS - SORENTO ROAD</b>			F.A.S. RTE. 777	SECTION 09-00080-01-RS	COUNTY BOND	TOTAL SHEETS 22	SHEET NO. 22
PLOT SCALE = 5.00000' / IN.	PLOT DATE = 7/9/2009	DRAWN - KOJ	REVISED -		SCALE:	SHEET NO. OF SHEETS	STA. 27+60.00 TO STA. 32+00.00	CONTRACT NO.				
		CHECKED -	REVISED -					FED. ROAD DIST. NO. [ILLINOIS] FED. AID PROJECT				
		DATE - 1-17-08	REVISED -					CONTRACT NO.				