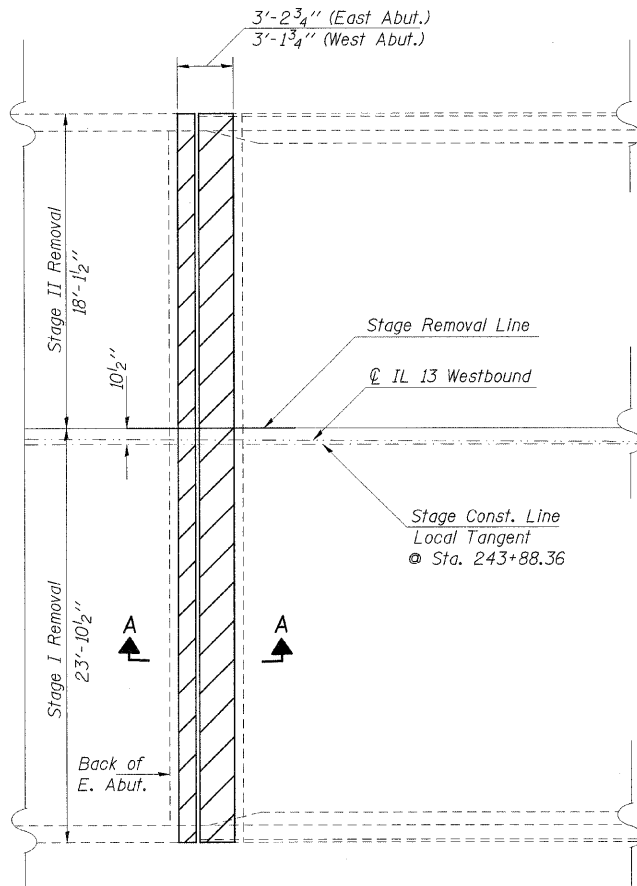
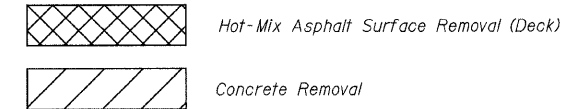
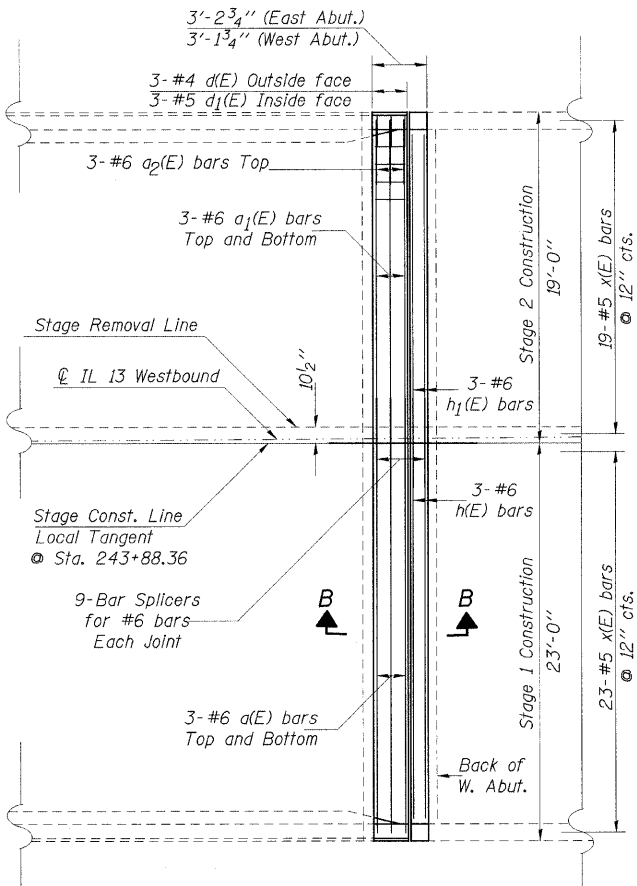


F.A.P. RTE.	SECTION	COUNTY	TOTAL SHEETS	SHEET NO.
331	*	JACKSON	67	47
STA. _____ TO STA. _____		FED. ROAD DIST. NO. _____ ILLINOIS FED. AID PROJECT		
• D9 BSMART FY10-1				

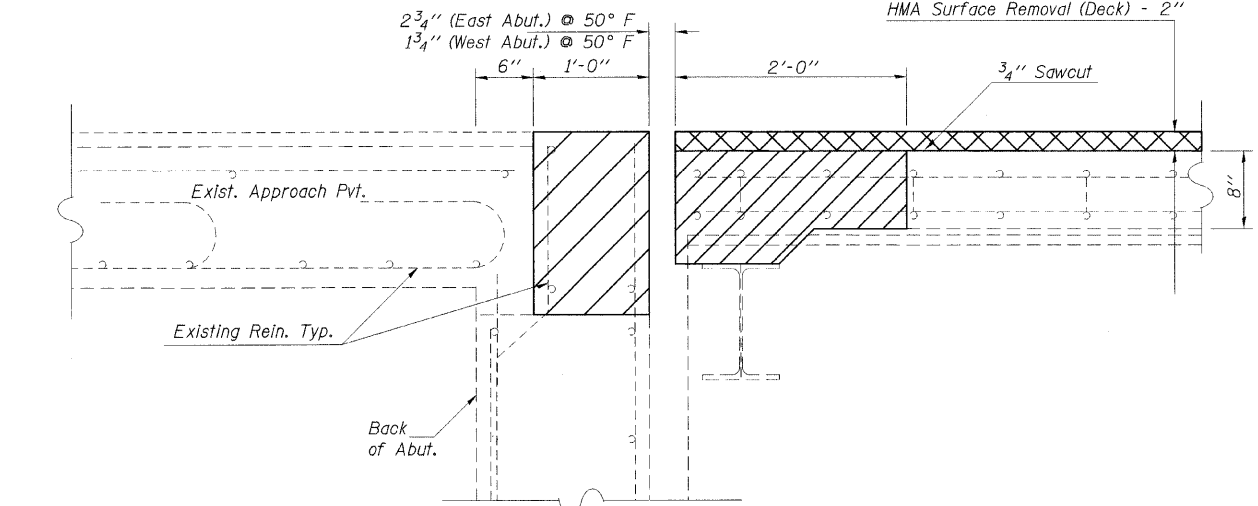
STATE OF ILLINOIS  
DEPARTMENT OF TRANSPORTATION



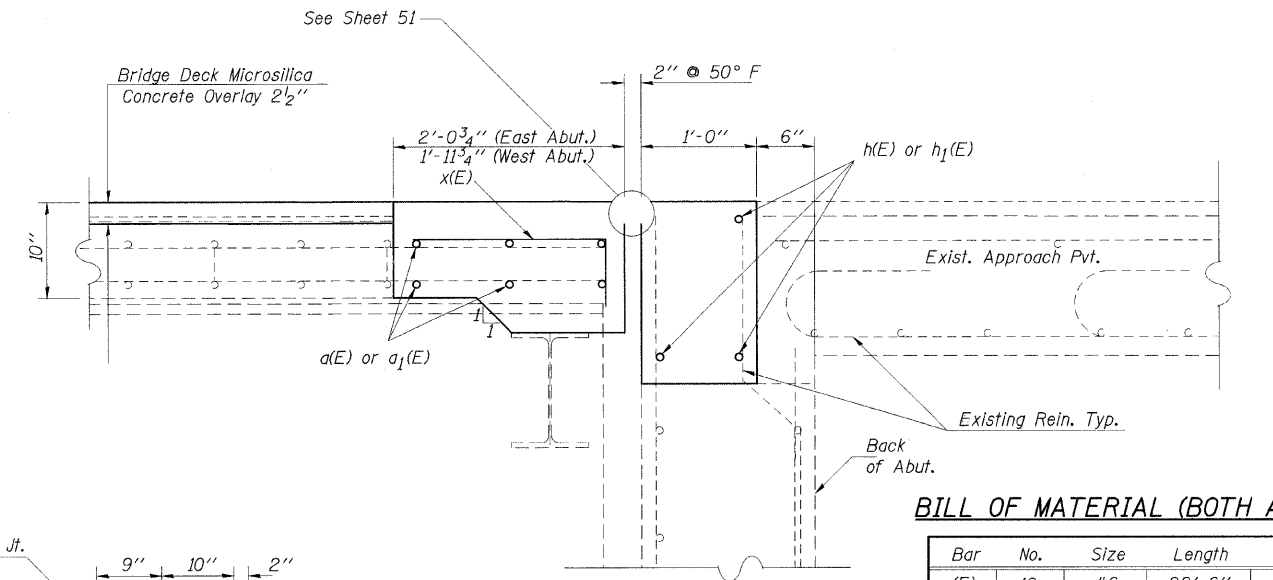
**EAST ABUT. PLAN**  
SHOWING CONCRETE REMOVAL  
West Abut. similar by 180° rotation



**WEST ABUT. PLAN**  
SHOWING NEW CONCRETE  
East Abut. similar by 180° rotation



**SECTION A-A**

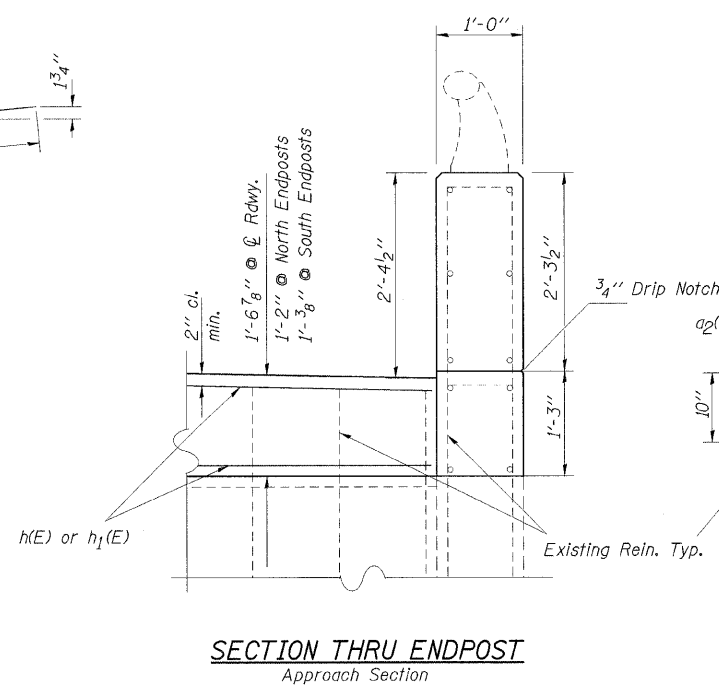
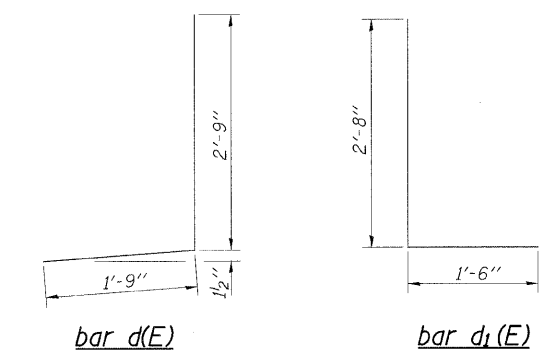
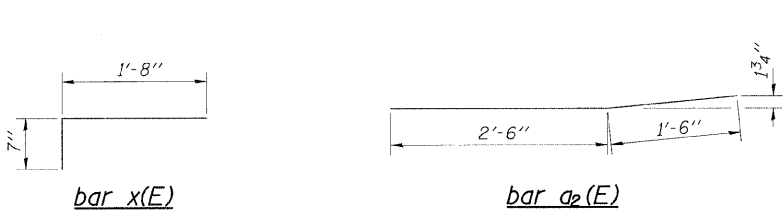


**SECTION B-B**

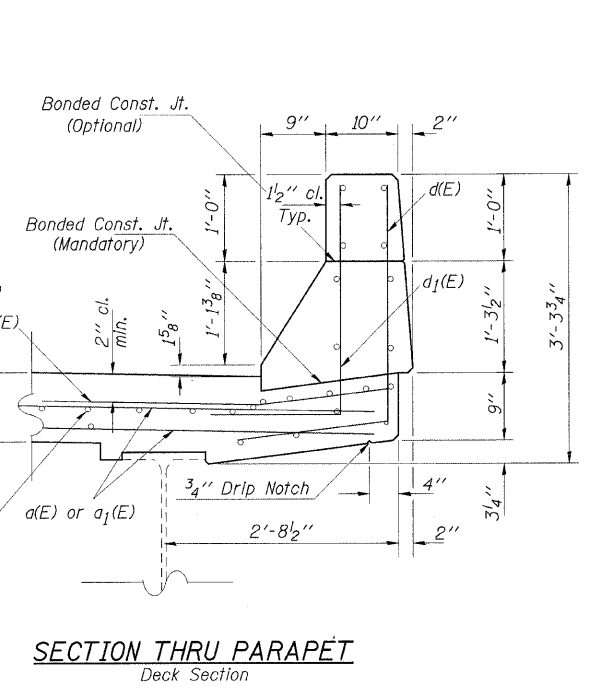
**BILL OF MATERIAL (BOTH ABUTS)**

Bar	No.	Size	Length	Shape
a(E)	12	#6	22'-6"	—
a1(E)	12	#6	18'-6"	—
a2(E)	12	#6	4'-0"	—
d(E)	12	#4	4'-6"	┘
d1(E)	12	#5	4'-2"	┘
h(E)	6	#6	21'-8"	—
h1(E)	6	#6	17'-8"	—
x(E)	84	#5	2'-3"	┘
Concrete Superstructure			Cu. Yd.	10.7
Concrete Removal			Cu. Yd.	9.6
Reinforcement Bars, Epoxy Coated			Pound	1450

Reinforcement bars designated (E) shall be epoxy coated.



**SECTION THRU ENDPOST**  
Approach Section



**SECTION THRU PARAPET**  
Deck Section

**JOINT REPLACEMENT DETAILS**  
ILL 13 W.B. OVER MUD CREEK  
JACKSON COUNTY  
SN 039-0050

PLT DATE = 3/25/2009  
FILE NAME = c:\pva\work\mudcreek\sn039-0050\039-0050.dgn  
USER NAME = pva