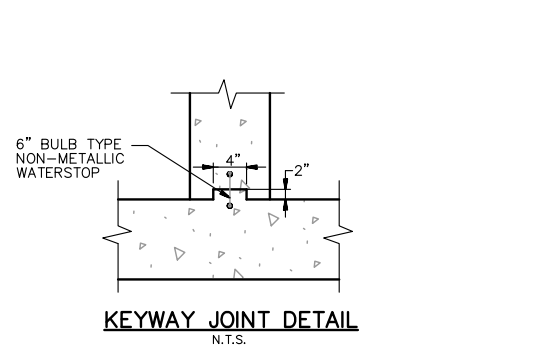
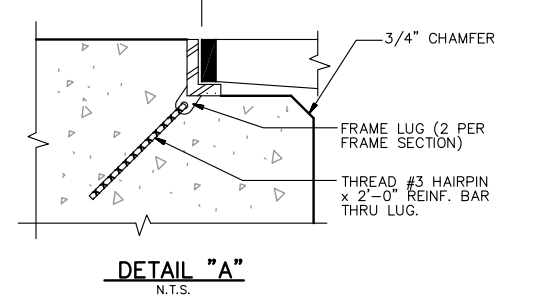
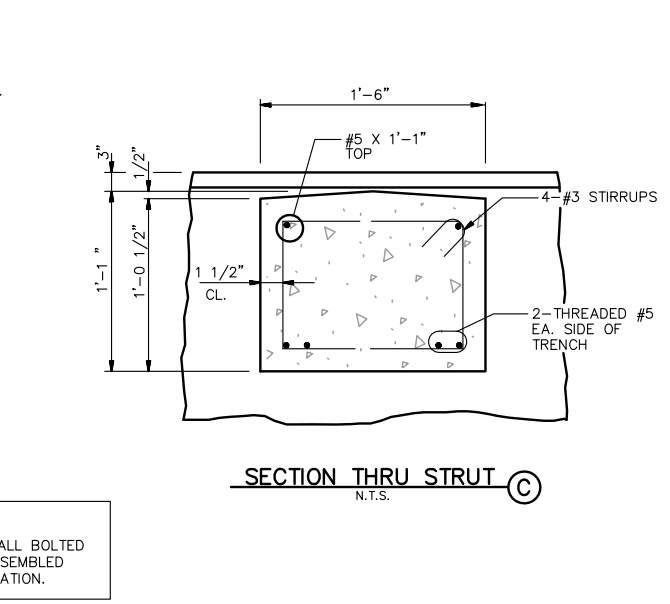
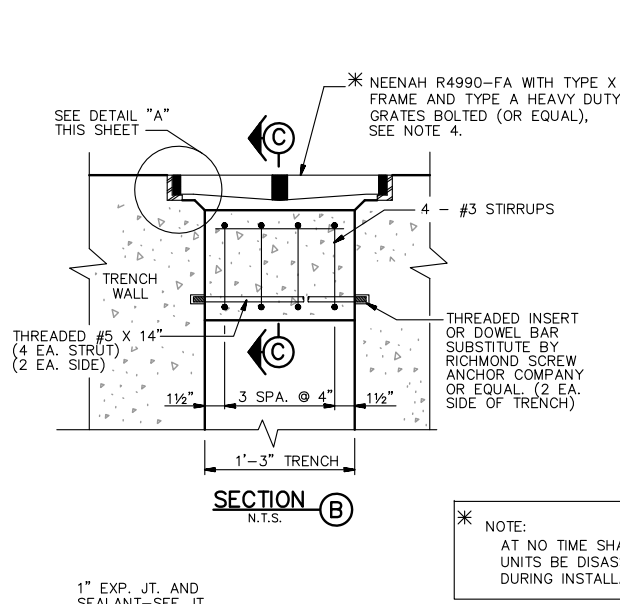
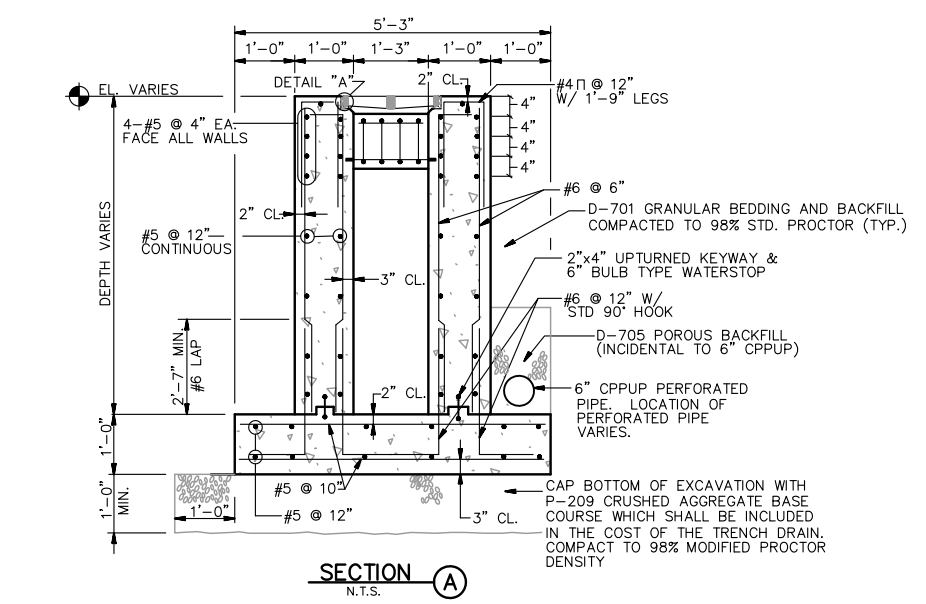
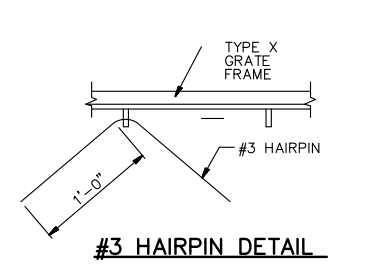
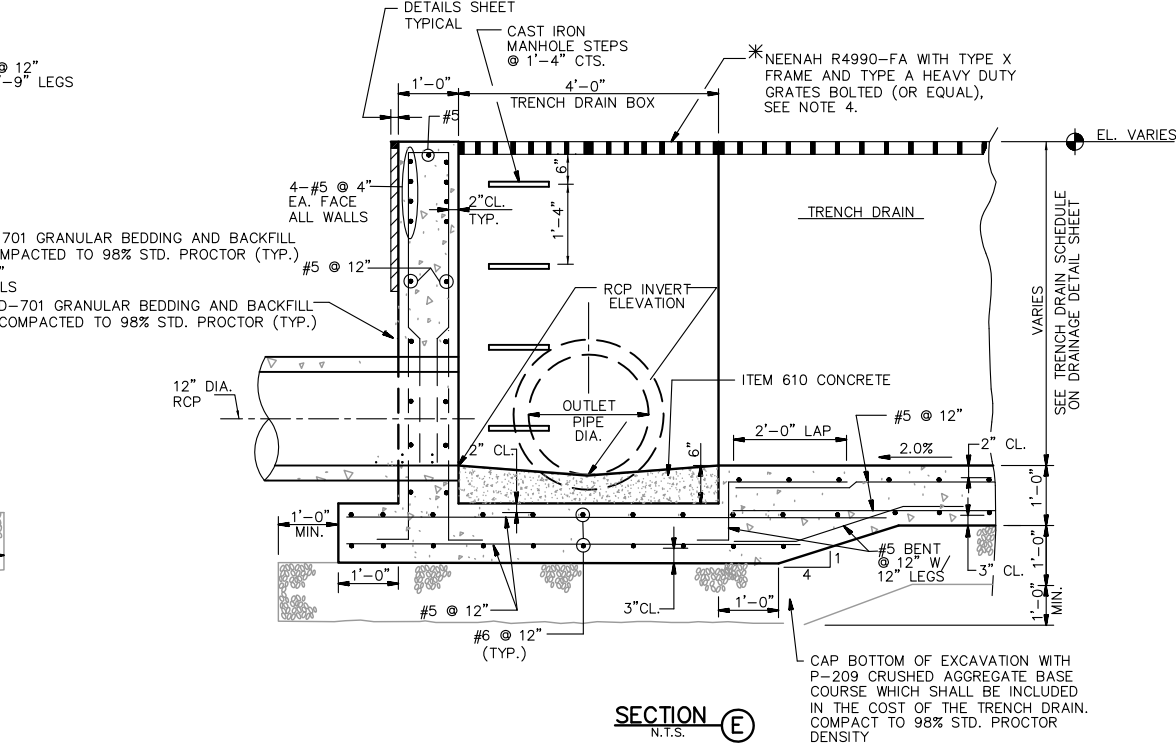
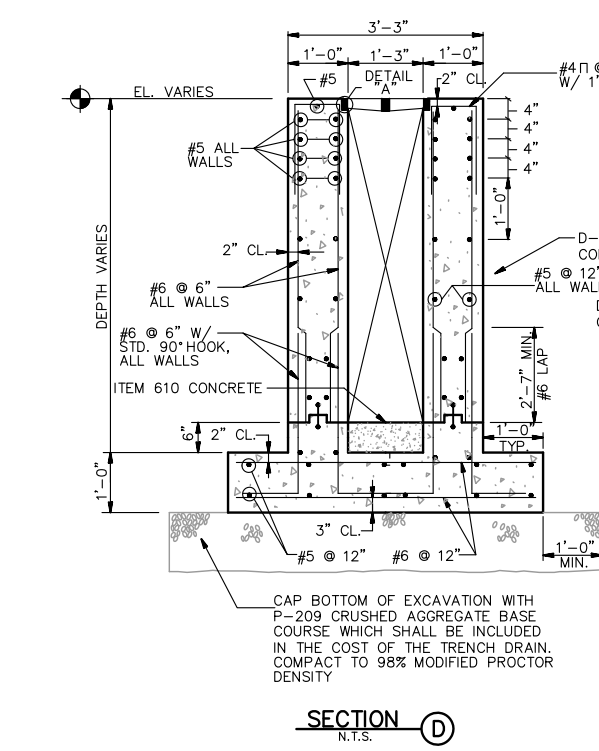


REVISIONS		
NUMBER	BY	DATE

0 1 2
 THIS BAR IS EQUAL TO 2" AT FULL SCALE (34X22).



* NOTE:
 AT NO TIME SHALL BOLTED UNITS BE DISASSEMBLED DURING INSTALLATION.



- NOTES:**
- COST OF EXCAVATION AND BACKFILL BELOW PAVEMENT SUBGRADE SHALL BE INCLUDED IN UNIT PRICE FOR TRENCH DRAINS.
 - TRENCH DRAINS SHALL BE CONSTRUCTED WITH CAST-IN-PLACE CONCRETE TO THE LINES DIMENSIONS AND DETAILS SHOWN HEREIN.
 - SEE DRAINAGE SCHEDULE SHEET FOR TRENCH DRAIN SCHEDULE.
 - SUBMIT MANUFACTURE'S MATERIAL CERTIFICATION AND PROOF LOAD TEST DATA FOR GRATES & FRAMES.
 - FRAME & GRATES WILL UTILIZE STANDARD 2'-0" LENGTH SECTIONS.
 - FORMING SYSTEMS MAY BE UTILIZED IF APPROPRIATE SHOP DRAWINGS ARE APPROVED BY THE ENGINEER.
 - THE CONTRACTOR SHALL PROVIDE THE AIRPORT WITH FIVE (5) SPARE GRATES. (COST INCIDENTAL TO TRENCH DRAINS)

**CHICAGO EXECUTIVE AIRPORT
 WHEELING/PROSPECT HEIGHTS, ILLINOIS
 CONSTRUCT SOUTHEAST QUADRANT APRON**

TRENCH DRAIN STRUCTURAL DETAILS

© Copyright GMT, Inc.

GMT
 CRAWFORD, MURPHY & TILLY, INC.
 CONSULTING ENGINEERS
 License No. 184-000613

CHICAGO EXECUTIVE AIRPORT

DESIGN BY:	ATI
DRAWN BY:	MJW
CHECKED BY:	
APPROVED BY:	
DATE:	07/24/09
JOB No:	09290-04
ILLINOIS PROJECT:	PWK-3581
A.I.P. PROJECT:	3-17-0018-B37

SHEET 21 OF 35 SHEETS