

09-18-2015 LETTING ITEM 018

STATE OF ILLINOIS  
DEPARTMENT OF TRANSPORTATION  
DIVISION OF HIGHWAYS

F.A.P. RTE.	SECTION	COUNTY	TOTAL SHEETS	SHEET NO.
348	(0708.3A)BP	COOK	7	1
		ILLINOIS	CONTRACT NO. 62B18	

D-91-396-15



LOCATION OF SECTION INDICATED THUS: -

FOR INDEX OF SHEETS, SEE SHEET NO. 2

PROJECT IS LOCATED IN THE  
VILLAGES OF LYONS AND FOREST VIEW.

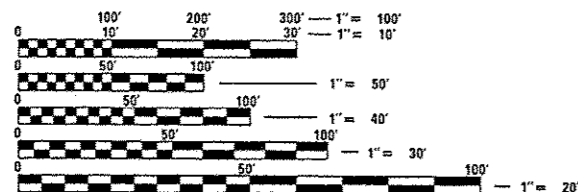
# PROPOSED HIGHWAY PLANS

F.A.P. ROUTE 348 : IL 43 (SB) – HARLEM AVE.  
OVER RR-MWRD SLUDGE & ACCESS RD.  
SECTION: (0708.3A)BP  
BRIDGE PAINTING  
COOK COUNTY

C-91-396-15

### TRAFFIC DATA

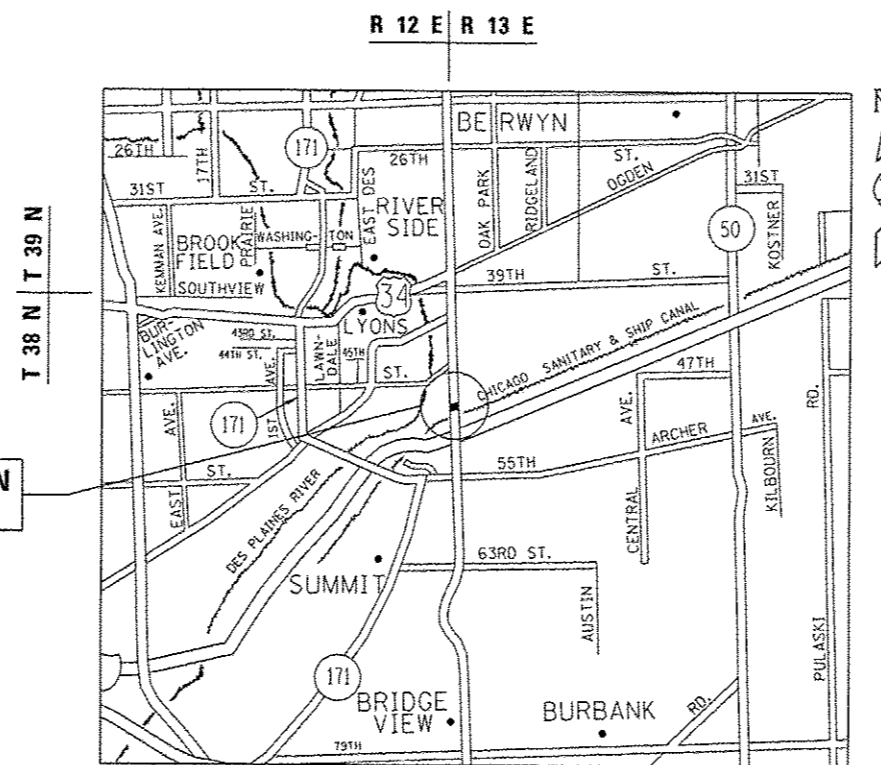
2013 ADT = 37,800  
POSTED SPEED LIMIT = 40 MPH



FULL SIZE PLANS HAVE BEEN PREPARED USING STANDARD  
ENGINEERING SCALES. REDUCED SIZED PLANS WILL NOT  
CONFORM TO STANDARD SCALES. IN MAKING MEASUREMENTS  
ON REDUCED PLANS, THE ABOVE SCALES MAY BE USED.

J.U.L.I.E.  
JOINT UTILITY LOCATION INFORMATION FOR EXCAVATION  
1-800-892-0123  
OR 811

IMPROVEMENT LOCATION  
SN 016-2412



LYONS & STICKNEY TOWNSHIPS

GROSS & NET LENGTH = 439.25 FT. = 0.083 MILE

PROJECT ENGINEER J. ALAIN MIDY (847) 221-3056  
PROJECT MANAGER ISSAM RAYYAN (847) 705-4178

CONTRACT NO. 62B18

STATE OF ILLINOIS  
DEPARTMENT OF TRANSPORTATION  
DIVISION OF HIGHWAYS

SUBMITTED July 1 20 15  
John F. Adams  
DEPUTY DIRECTOR OF HIGHWAYS, REGION ENGINEER

Aug 14 20 15  
John D. Baranzelli P.E.  
ENGINEER OF DESIGN AND ENVIRONMENT

Aug 14 20 15  
Emmett Osman P.E.  
DIRECTOR OF HIGHWAYS, CHIEF ENGINEER

PRINTED BY THE AUTHORITY  
OF THE STATE OF ILLINOIS

**INDEX OF SHEETS**

1. TITLE SHEET
2. INDEX OF SHEETS, STATE STANDARDS, GENERAL NOTES AND GENERAL PAINT NOTES
3. SUMMARY OF QUANTITIES
- 4-6. EXISTING BRIDGE PLANS
7. ARTERIAL ROAD INFORMATION SIGN (TC-22)

**STATE STANDARDS**

STANDARD NO.	DESCRIPTION
701601-09	URBAN LANE CLOSURE, MULTILANE, 1W OR 2W WITH NONTRAVERSABLE MEDIAN
701801-05	SIDEWALK, CORNER OR CROSSWALK CLOSURE
701901-04	TRAFFIC CONTROL DEVICES

**GENERAL NOTES**

BEFORE STARTING ANY EXCAVATION, THE CONTRACTOR SHALL CALL "J.U.L.I.E." AT (800) 892-0123 OR 811 FOR FIELD LOCATIONS OF BURIED ELECTRIC, TELEPHONE AND GAS UTILITIES. 48 HOUR NOTIFICATION IS REQUIRED.

THE CONTRACTOR SHALL COORDINATE CONSTRUCTION ACTIVITIES WITH UTILITY COMPANIES, AND THE VILLAGES OF LYONS AND FOREST VIEW.

PLAN DIMENSIONS AND DETAILS RELATIVE TO EXISTING PLANS ARE SUBJECT TO NOMINAL CONSTRUCTION VARIATIONS. THE CONTRACTOR SHALL FIELD VERIFY EXISTING DIMENSIONS AND DETAILS AFFECTING NEW CONSTRUCTION AND MAKE NECESSARY APPROVED ADJUSTMENTS PRIOR TO CONSTRUCTION OR ORDERING OF MATERIALS. SUCH VARIATIONS SHALL NOT BE CAUSE FOR ADDITIONAL COMPENSATION FOR A CHANGE IN SCOPE OF THE WORK, HOWEVER, THE CONTRACTOR WILL BE PAID FOR THE QUANTITY ACTUALLY FURNISHED BASED AT THE UNIT PRICE BID FOR THE WORK.

THE CONTRACTOR WILL NOT BE ALLOWED TO SET UP A YARD OR FIELD OFFICE ON STATE PROPERTY WITHOUT WRITTEN PERMISSION FROM THE DEPARTMENT.

THE CONTRACTOR SHALL CONTACT THE DISTRICT ONE TRAFFIC CONTROL SUPERVISOR AT (847) 705-4470 A MINIMUM OF 72 HOURS IN ADVANCE OF BEGINNING WORK.

IT SHALL BE THE CONTRACTOR'S RESPONSIBILITY TO PROTECT AND MAINTAIN THE EXISTING BRIDGE LIGHTING AT ANY LOCATIONS THAT LIGHTING IS ENCOUNTERED ADJACENT TO AN AREA TO BE CLEANED AND PAINTED.

THE CONTRACTOR SHALL BE REQUIRED TO PROVIDE ACCESS TO ABUTTING PROPERTY AT ALL TIMES DURING THE CONSTRUCTION OF THIS PROJECT.

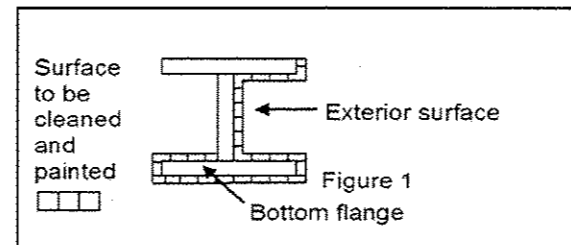
DO NOT SCALE PLANS FOR CONSTRUCTION DIMENSIONS.

THE CONTRACTOR IS NOT ALLOWED TO HAVE A LANE CLOSURE OVERNIGHT FOR THE PURPOSE OF STAGING EQUIPMENT.

THE CONTRACTOR SHALL OBTAIN COAST GUARD APPROVAL TO OCCUPY NAVIGABLE WATERS, IF REQUIRED, FOR THE PROPOSED WORK. A WORK PLAN SHALL BE PREPARED BY THE CONTRACTOR, REVIEWED AND APPROVED BY THE ENGINEER AND BE SUBMITTED BY THE ENGINEER TO THE COAST GUARD AT THE ADDRESS LISTED BELOW FOR APPROVAL.

BRIDGE ADMINISTRATOR  
 US COAST GUARD  
 NINTH COAST GUARD DISTRICT  
 1240 E. NINTH ST.  
 CLEVELAND, OH 44199-2060

**GENERAL PAINT NOTES**



**FASCIA BEAM PAINTING DETAIL**

**FIGURE 1**

CLEANING AND PAINTING OF THE EXISTING STRUCTURAL STEEL SHALL BE AS SPECIFIED IN THE SPECIAL PROVISION FOR "CLEANING AND PAINTING EXISTING STEEL STRUCTURES".

THE AREAS DESIGNATED SHALL BE CLEANED PER NEAR WHITE BLAST CLEANING - SSPC-SP10. THE AREAS DESIGNATED SHALL BE PAINTED ACORDING TO THE REQUIREMENTS OF PAINT SYSTEM 1 -OZ/E/U. THE COLOR OF THE FINAL FINISH COAT FOR ALL INTERIOR STEEL SURFACES SHALL BE GRAY, MUNSELL NO 5B 7/1. THE COLOR OF THE FINAL FINISH COAT FOR THE EXTERIOR AND BOTTOM FLANGE OF THE FASCIA BEAMS SHALL BE REDDISH BROWN, MUNSELL NO 2.5YR 3/4.

ALL ITEMS (SUCH AS, BUT NOT LIMITED TO: CONDUITS, BRACKETS AND DECK DRAINS) ATTACHED TO OUTSIDE OF THE FASCIA BEAMS SHOULD BE CLEANED AND PAINTED

A MINIMUM OF ONE (1) AIR MONITOR WILL BE REQUIRED TO MONITOR ABRASIVE BLASTING OPERATIONS. SEE SPECIAL PROVISIONS FOR "CONTAINMENT AND DISPOSAL OF LEAD PAINT CLEANING RESIDUES."

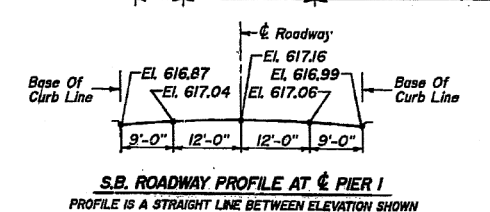
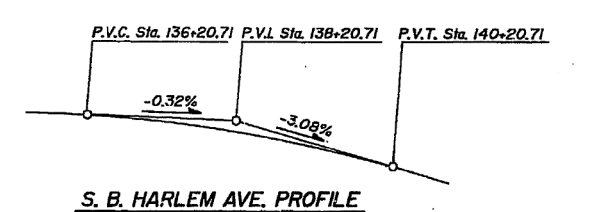
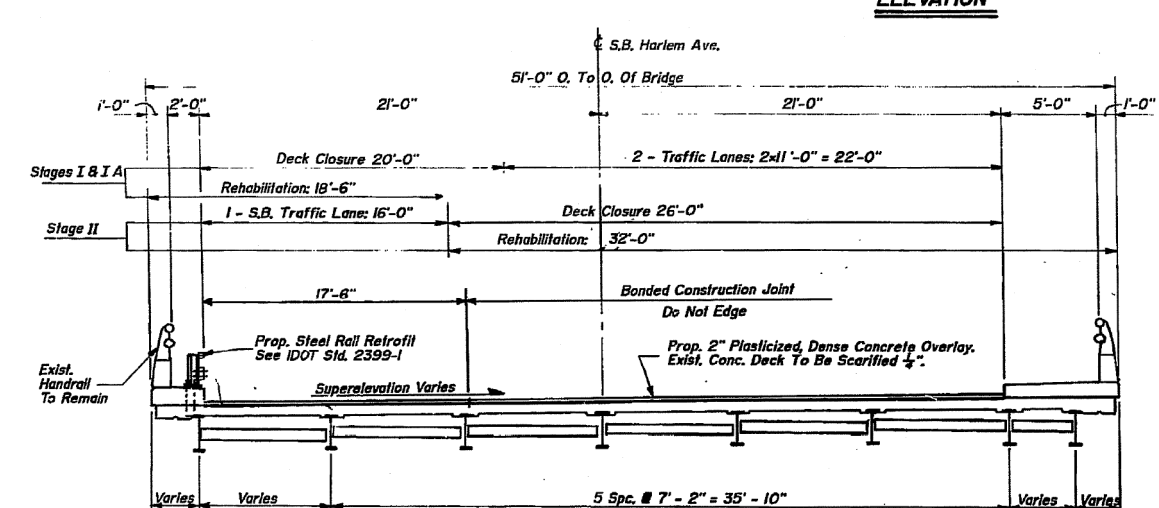
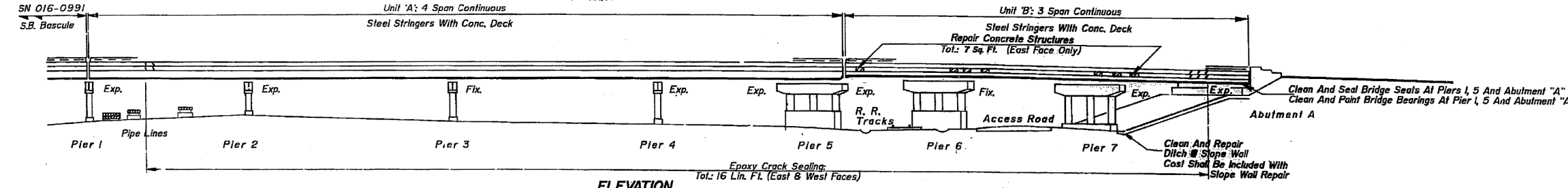
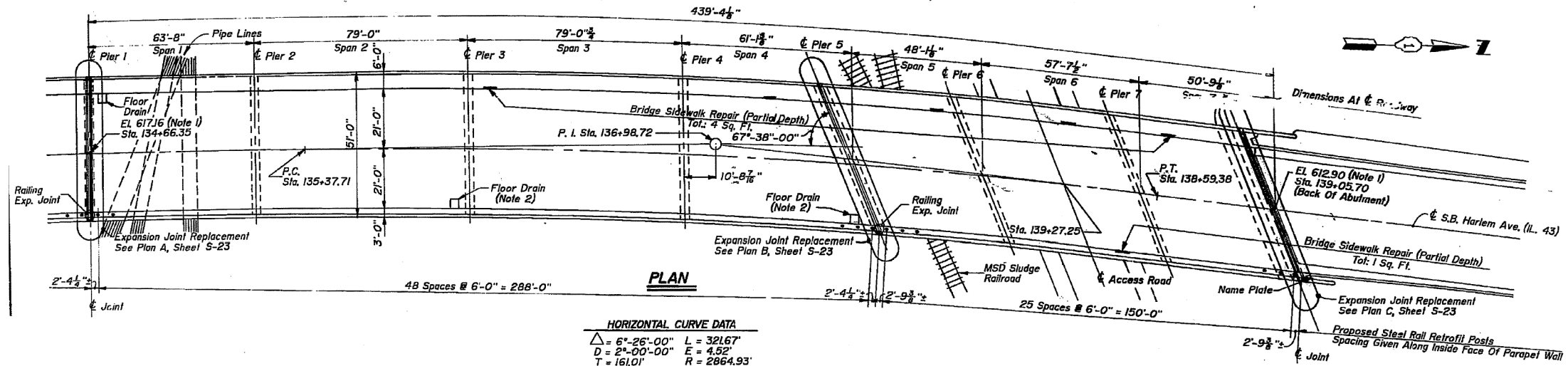
ALL BEAMS, BEARINGS AND OTHER STRUCTURAL STEEL WITHIN FIVE (5) FT., (MEASURED ALONG THE BEAM) OF EITHER SIDE OF ALL DECK JOINTS, SHALL BE CLEANED PER NEAR WHITE BLAST CLEANING SSPC-SP10. THE EXTERIOR SURFACES AND TOP AND BOTTOM OF THE BOTTOM FLANGE OF THE FASCIA BEAMS (SEE FIGURE 1) SHALL BE CLEANED PER NEAR WHITE BLAST CLEANING SSPC-SP10.

FILE NAME :	USER NAME : pyronovskrb	DESIGNED -	REVISED -	<b>STATE OF ILLINOIS DEPARTMENT OF TRANSPORTATION</b>	<b>INDEX OF SHEETS, STATE STANDARDS, GENERAL NOTES AND GENERAL PAINT NOTES</b>	F.A.P. RTE.	SECTION	COUNTY	TOTAL SHEETS	SHEET NO.
pu:\11084EBID\INTEG\illinois.gov\PI\DOT\Documents\1007 Office\District 1\Projects\0136\BRW\02\Design\013615-shr-plan.dgn	CHECKED -	REVISED -	348			(0708.3A)BP	CODK	7	2	
PLOT SCALE * 100.0000 1/ in.	CHECKED -	REVISED -	CONTRACT NO. 62B18							
Default	PLOT DATE * 7/9/2015	DATE -	SCALE:			SHEET	OF	SHEETS	STA.	TO

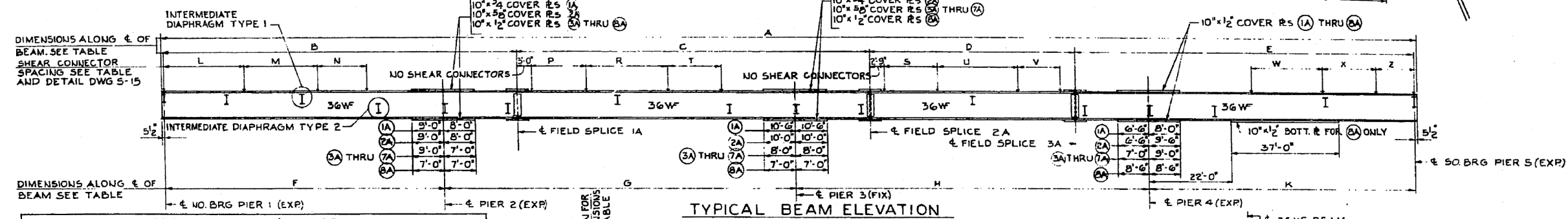
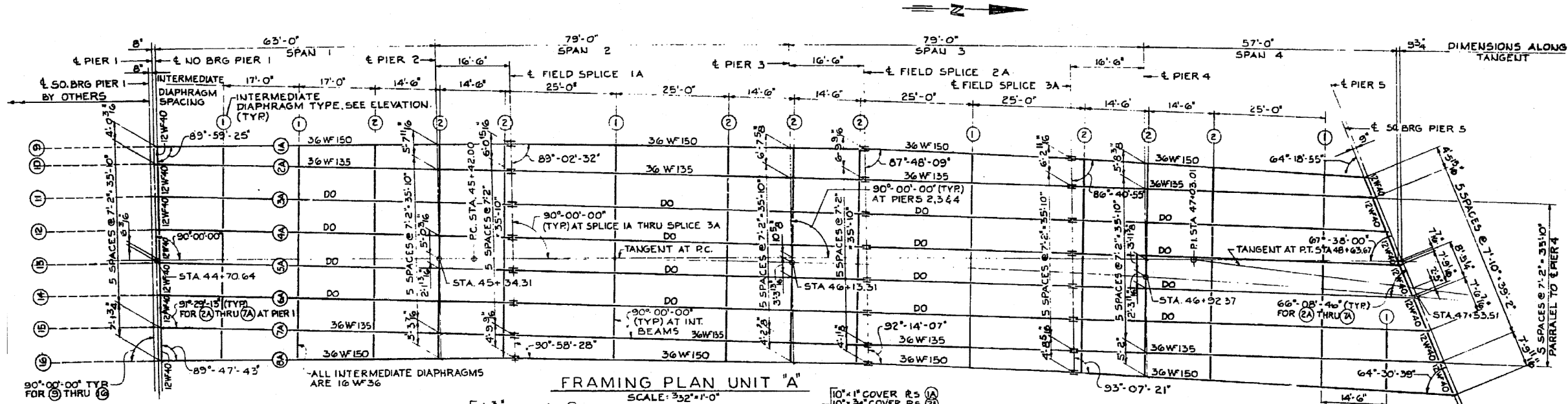
URBAN

SUMMARY OF QUANTITIES			100% STATE TOTAL QUANTITIES	CONSTRUCTION TYPE CODE 0014					SUMMARY OF QUANTITIES				TOTAL QUANTITIES	CONSTRUCTION TYPE CODE				
CODE NO	ITEM	UNIT		0014					CODE NO	ITEM	UNIT							
67000400	ENGINEER'S FIELD OFFICE, TYPE A	CAL MO	6	6														
67100100	MOBILIZATION	L SUM	1	1														
70102630	TRAFFIC CONTROL AND PROTECTION, STANDARD 701601	L SUM	1	1														
70102640	TRAFFIC CONTROL AND PROTECTION, STANDARD 701801	L SUM	1	1														
Z0007112	CONTAINMENT AND DISPOSAL OF LEAD PAINT CLEANING RESIDUES	L SUM	1	1														
Z0010501	CLEANING AND PAINTING STEEL BRIDGE NO. 1	L SUM	1	1														
Z0030850	TEMPORARY INFORMATION SIGNING	SO FT	51.4	51.4														
Z0048665	RAILROAD PROECTIVE LIABILITY INSURANCE	L SUM	1	1														

# FOR INFORMATION ONLY

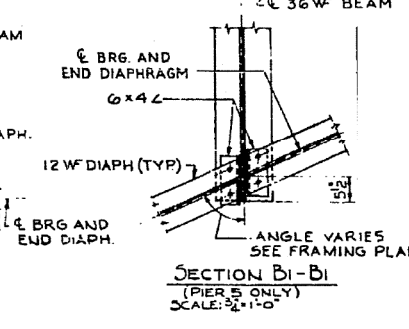
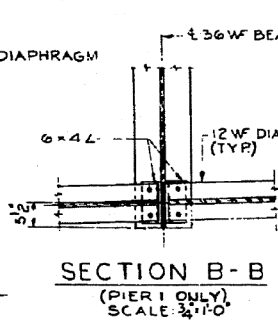
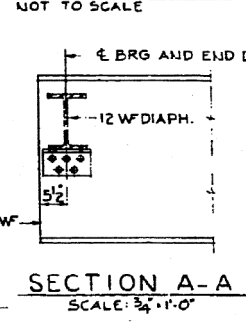
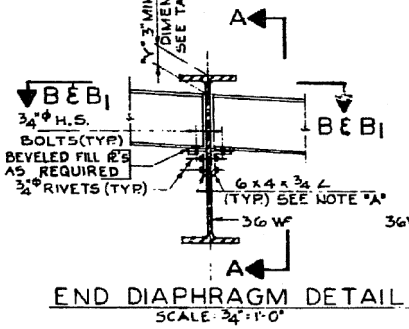


FILE NAME =	USER NAME = pyrzenowski	DESIGNED -	REVISED -	<b>STATE OF ILLINOIS DEPARTMENT OF TRANSPORTATION</b>	<b>GENERAL PLAN &amp; ELEVATION SN 016-2412</b>			F.A.P. RTE.	SECTION	COUNTY	TOTAL SHEETS	SHEET NO.
pw\11084EBIDINTEG.111nois.gov\PIWIDOT\Documents\IDOT Offices\District 1\Projects\DI396\Design\DI39615-sh1-plan.dgn	PLLOT SCALE = 100.0000' / in.	CHECKED -	REVISED -					348	(0708.3A)BP	COOK	7	4
Default	PLLOT DATE = 7/9/2015	DATE -	REVISED -		SCALE: SHEET OF SHEETS STA. TO STA.			CONTRACT NO. 62B18				
ILLINOIS FED. AID PROJECT												



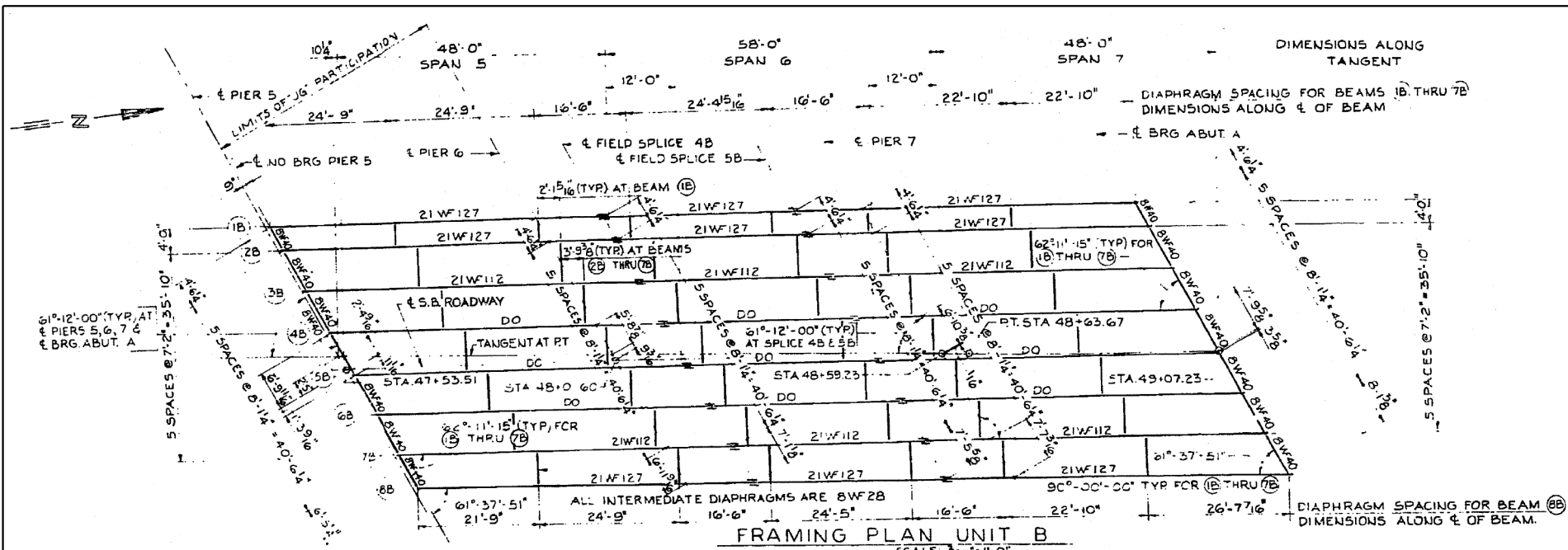
DIMENSIONS ALONG E OF BEAM

BEAM	A	B	C	D	E	F	G	H	K
(1A)	271'-7 <sup>3</sup> / <sub>16</sub> "	79'-6"	79'-0 <sup>1</sup> / <sub>8</sub> "	46'-0 <sup>3</sup> / <sub>8</sub> "	66'-2 <sup>1</sup> / <sub>16</sub> "	63'-0"	79'-0 <sup>1</sup> / <sub>8</sub> "	79'-0 <sup>1</sup> / <sub>16</sub> "	49'-7 <sup>3</sup> / <sub>16</sub> "
(2A)	273'-3 <sup>3</sup> / <sub>8</sub> "	79'-6 <sup>5</sup> / <sub>16</sub> "	79'-0 <sup>5</sup> / <sub>16</sub> "	46'-0 <sup>3</sup> / <sub>16</sub> "	67'-9 <sup>9</sup> / <sub>16</sub> "	63'-0 <sup>1</sup> / <sub>4</sub> "	79'-0 <sup>5</sup> / <sub>16</sub> "	79'-0 <sup>5</sup> / <sub>16</sub> "	51'-3 <sup>1</sup> / <sub>2</sub> "
(3A)	276'-3 <sup>1</sup> / <sub>8</sub> "	79'-6 <sup>5</sup> / <sub>16</sub> "	79'-0 <sup>5</sup> / <sub>16</sub> "	46'-0 <sup>3</sup> / <sub>16</sub> "	70'-9 <sup>5</sup> / <sub>16</sub> "	63'-0 <sup>1</sup> / <sub>4</sub> "	79'-0 <sup>5</sup> / <sub>16</sub> "	79'-0 <sup>5</sup> / <sub>16</sub> "	54'-3 <sup>1</sup> / <sub>4</sub> "
(4A)	279'-2 <sup>15</sup> / <sub>16</sub> "	79'-6 <sup>5</sup> / <sub>16</sub> "	79'-0 <sup>5</sup> / <sub>16</sub> "	46'-0 <sup>3</sup> / <sub>16</sub> "	73'-9 <sup>1</sup> / <sub>8</sub> "	63'-0 <sup>1</sup> / <sub>4</sub> "	79'-0 <sup>5</sup> / <sub>16</sub> "	79'-0 <sup>5</sup> / <sub>16</sub> "	57'-3 <sup>1</sup> / <sub>16</sub> "
(5A)	282'-2 <sup>3</sup> / <sub>4</sub> "	79'-6 <sup>5</sup> / <sub>16</sub> "	79'-0 <sup>5</sup> / <sub>16</sub> "	46'-0 <sup>3</sup> / <sub>16</sub> "	76'-8 <sup>1</sup> / <sub>2</sub> "	63'-0 <sup>1</sup> / <sub>4</sub> "	79'-0 <sup>5</sup> / <sub>16</sub> "	79'-0 <sup>5</sup> / <sub>16</sub> "	60'-2 <sup>7</sup> / <sub>8</sub> "
(6A)	285'-2 <sup>1</sup> / <sub>2</sub> "	79'-6 <sup>5</sup> / <sub>16</sub> "	79'-0 <sup>5</sup> / <sub>16</sub> "	46'-0 <sup>3</sup> / <sub>16</sub> "	79'-8 <sup>1</sup> / <sub>16</sub> "	63'-0 <sup>1</sup> / <sub>4</sub> "	79'-0 <sup>5</sup> / <sub>16</sub> "	79'-0 <sup>5</sup> / <sub>16</sub> "	63'-2 <sup>5</sup> / <sub>8</sub> "
(7A)	288'-2 <sup>5</sup> / <sub>16</sub> "	79'-6 <sup>5</sup> / <sub>16</sub> "	79'-0 <sup>5</sup> / <sub>16</sub> "	46'-0 <sup>3</sup> / <sub>16</sub> "	82'-8 <sup>1</sup> / <sub>2</sub> "	63'-0 <sup>1</sup> / <sub>4</sub> "	79'-0 <sup>5</sup> / <sub>16</sub> "	79'-0 <sup>5</sup> / <sub>16</sub> "	66'-2 <sup>7</sup> / <sub>16</sub> "
(8A)	291'-2 <sup>1</sup> / <sub>8</sub> "	79'-6"	79'-0 <sup>1</sup> / <sub>8</sub> "	46'-0 <sup>1</sup> / <sub>16</sub> "	85'-5 <sup>5</sup> / <sub>16</sub> "	63'-0"	79'-0 <sup>1</sup> / <sub>8</sub> "	79'-0 <sup>3</sup> / <sub>4</sub> "	69'-3"

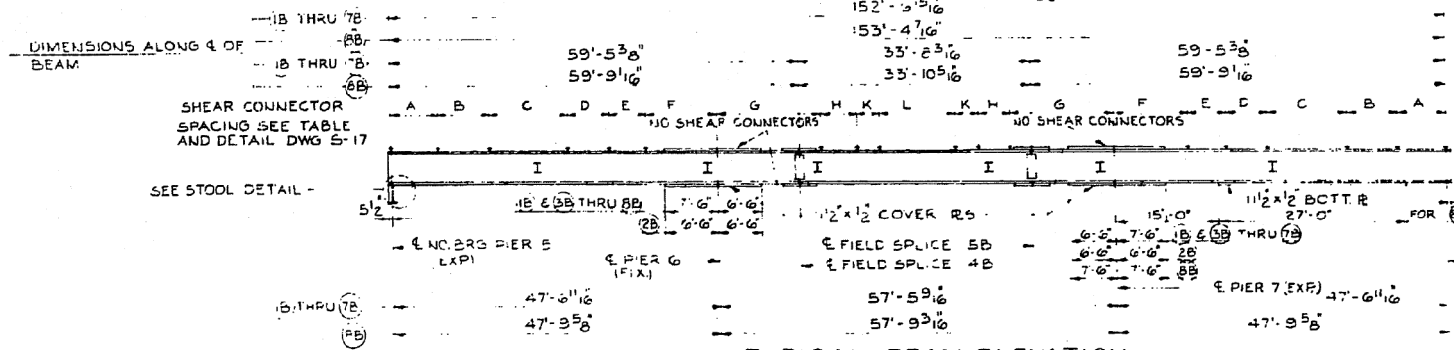


DIMENSION 'Y' PIER 1 AND PIER 5

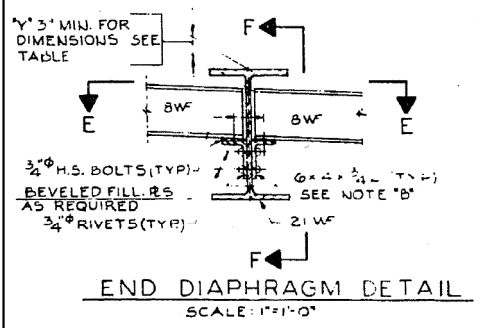
BEAM	PIER 1	PIER 5	BEAM	PIER 1	PIER 5
(1A)	3 <sup>9</sup> / <sub>16</sub> "	3"	(5A)	3"	3 <sup>5</sup> / <sub>8</sub> "
(2A)	3"	3 <sup>15</sup> / <sub>16</sub> "	(6A)	3 <sup>1</sup> / <sub>16</sub> "	3 <sup>7</sup> / <sub>16</sub> "
(3A)	3 <sup>3</sup> / <sub>16</sub> "	3 <sup>3</sup> / <sub>8</sub> "	(7A)	3"	3 <sup>1</sup> / <sub>4</sub> "
(4A)	3 <sup>1</sup> / <sub>8</sub> "	3 <sup>3</sup> / <sub>4</sub> "	(8A)	3 <sup>3</sup> / <sub>4</sub> "	3"



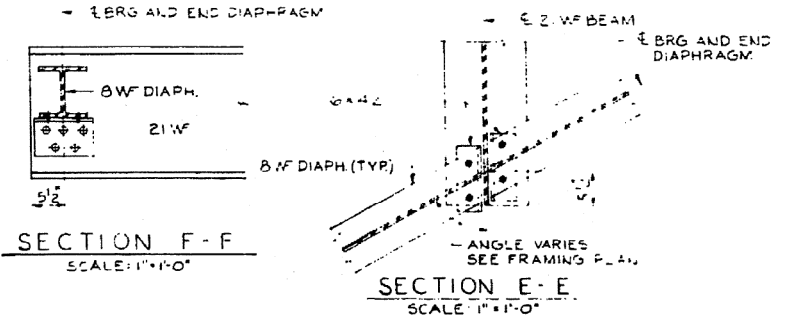
FRAMING PLAN UNIT B  
SCALE: 3/32" = 1'-0"



TYPICAL BEAM ELEVATION  
NOT TO SCALE



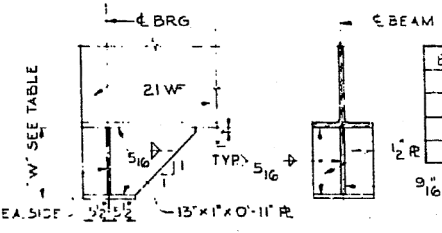
END DIAPHRAGM DETAIL  
SCALE: 1" = 1'-0"



SECTION F-F  
SCALE: 1" = 1'-0"

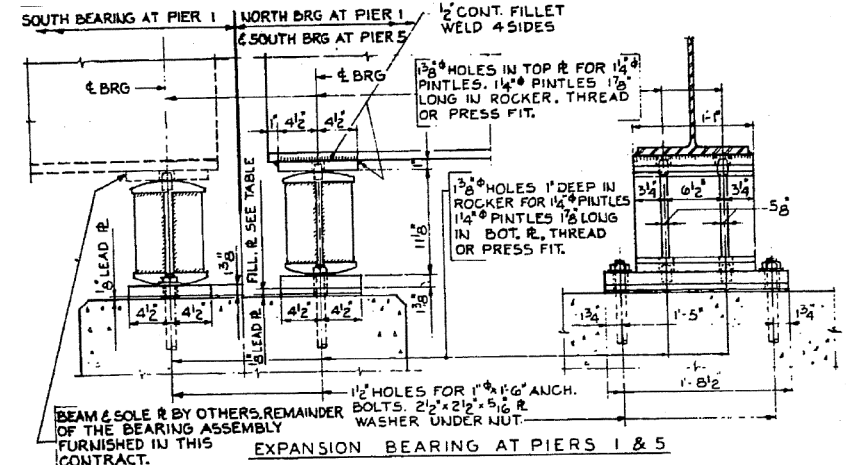
SECTION E-E  
SCALE: 1" = 1'-0"

BEAM	DIMENSION "Y"		BEAM	DIMENSION "Y"	
	PIER 5	ABUT. A		PIER 5	ABUT. A
(1B)	3"	3"	(5B)	3 3/4"	3"
(2B)	3 1/2"	3 3/8"	(6B)	3 5/8"	3 7/8"
(3B)	3 5/16"	3 3/8"	(7B)	3 5/16"	3 3/8"
(4B)	3 3/8"	3 5/16"	(8B)	3"	3"

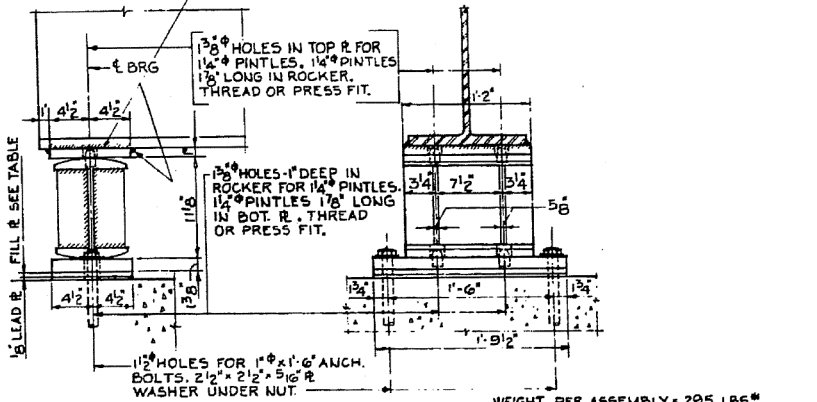


STOOL DETAIL  
SCALE: 3/4" = 1'-0"

BEAM	"N"	BEAM	"W"
(1B)	1'-2 5/16"	(5B)	1'-1 11/16"
(2B)	1'-1 9/16"	(6B)	1'-1 5/8"
(3B)	1'-2 1/8"	(7B)	1'-1 3/8"
(4B)	1'-1 5/16"	(8B)	1'-1 5/8"



EXPANSION BEARING AT PIERS 1 & 5



EXPANSION BEARING AT ABUTMENT A  
WEIGHT PER ASSEMBLY = 295 LBS  
16 REQUIRED  
EXP. BRG. AT N. BRG. OF PIER 5 SIMILAR (EXCEPT STOOL AT TOP OF BEARING)  
\* \* "UG" PARTICIPATION

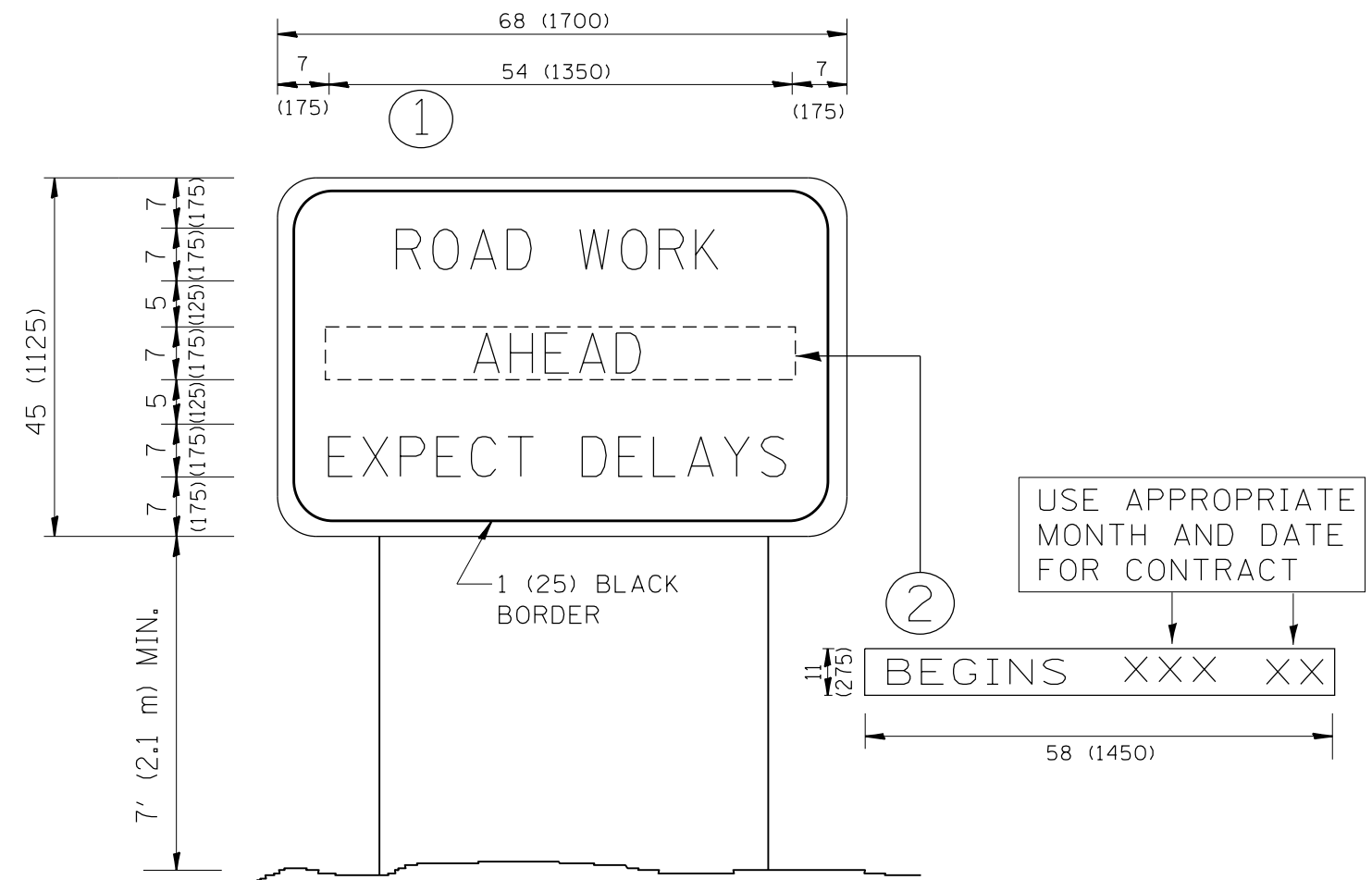
FILE NAME =	USER NAME = pyrozenowskirb	DESIGNED -	REVISED -
pw\1\084EBIDINTEG\11\inois.gov\PIWIDOT\Documents\DOT Offices\District 1\Projects\DI39615\Design\DI39615-shf-plan.dgn		CHECKED -	REVISED -
Default	PLOT DATE = 7/9/2015	DATE -	REVISED -

STATE OF ILLINOIS  
DEPARTMENT OF TRANSPORTATION

FRAMING PLAN II & BEARING DETAILS  
SN 016-2412

SCALE: SHEET OF SHEETS STA. TO STA.

F.A.P. R.T.E.	SECTION	COUNTY	TOTAL SHEETS	SHEET NO.
348	(0708.3A)BP	COOK	7	6
CONTRACT NO. 62B18			ILLINOIS FED. AID PROJECT	



**NOTES:**

1. USE BLACK LETTERING ON ORANGE BACKGROUND.
2. ERECT SIGNS IN ADVANCE OF THE LOCATION FOR THE "ROAD CONSTRUCTION AHEAD" SIGN AT LOCATIONS AS DIRECTED BY THE ENGINEER.
3. ERECT SIGN ① WITH INSTALLED PANEL ② ONE WEEK PRIOR TO THE START OF CONSTRUCTION.
4. REMOVE PANEL ② SOON AFTER THE START OF CONSTRUCTION.
5. SEE SPECIAL PROVISION FOR "TEMPORARY INFORMATION SIGNING" FOR ADDITIONAL INFORMATION.
6. ONE SIGN ASSEMBLY EQUALS 25.70 SQ. FT. (2.3 SQ. M.)
7. SHALL BE PAID FOR AS TEMPORARY INFORMATION SIGNING.

ALL DIMENSIONS ARE IN INCHES (MILLIMETERS) UNLESS OTHERWISE SHOWN.

FILE NAME =	USER NAME = pyrzenowski	DESIGNED -	REVISED - R. MIRS 09-15-97
p:\11\084EBID\INTEG.illinois.gov\PWIDOT\Documents\DOT Offices\District 1\Projects\DI39615\Design\DI39615-sht-plen.dgn		DRAWN -	REVISED - R. MIRS 12-11-97
		CHECKED -	REVISED - T. RAMMACHER 02-02-99
		DATE -	REVISED - C. JUCIUS 01-31-07

**STATE OF ILLINOIS  
DEPARTMENT OF TRANSPORTATION**

**ARTERIAL ROAD  
INFORMATION SIGN**

SCALE: NONE SHEET NO. 1 OF 1 SHEETS STA. TO STA.

F.A.P. RTE.	SECTION	COUNTY	TOTAL SHEETS	SHEET NO.
348	(0708.3)BP	COOK	7	7
TC-22		CONTRACT NO. 62B18		
FED. ROAD DIST. NO. 1 ILLINOIS FED. AID PROJECT				