

STATE OF ILLINOIS
DEPARTMENT OF TRANSPORTATION
DIVISION OF HIGHWAYS

PROPOSED
HIGHWAY PLANS

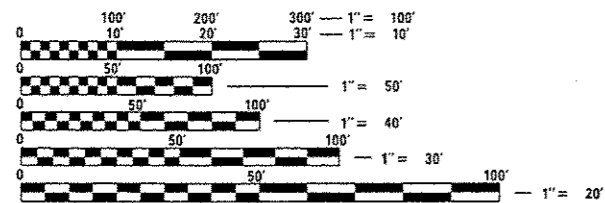
VARIOUS ROUTES
SECTION: D6 CABLE/GUARDRAIL 2016

SAFETY ITEM REPAIR
VARIOUS COUNTIES IN D6
C-96-063-15

INDEX OF SHEETS

- 1 COVER SHEET
- 2 GENERAL NOTES
- 3-5 SUMMARY OF QUANTITIES
- 6-16 PRE-MGS HIGHWAY STANDARDS
- 17 CABLE GUARD MARKER DETAIL

FOR LIST OF STANDARDS, SEE SHEET 2

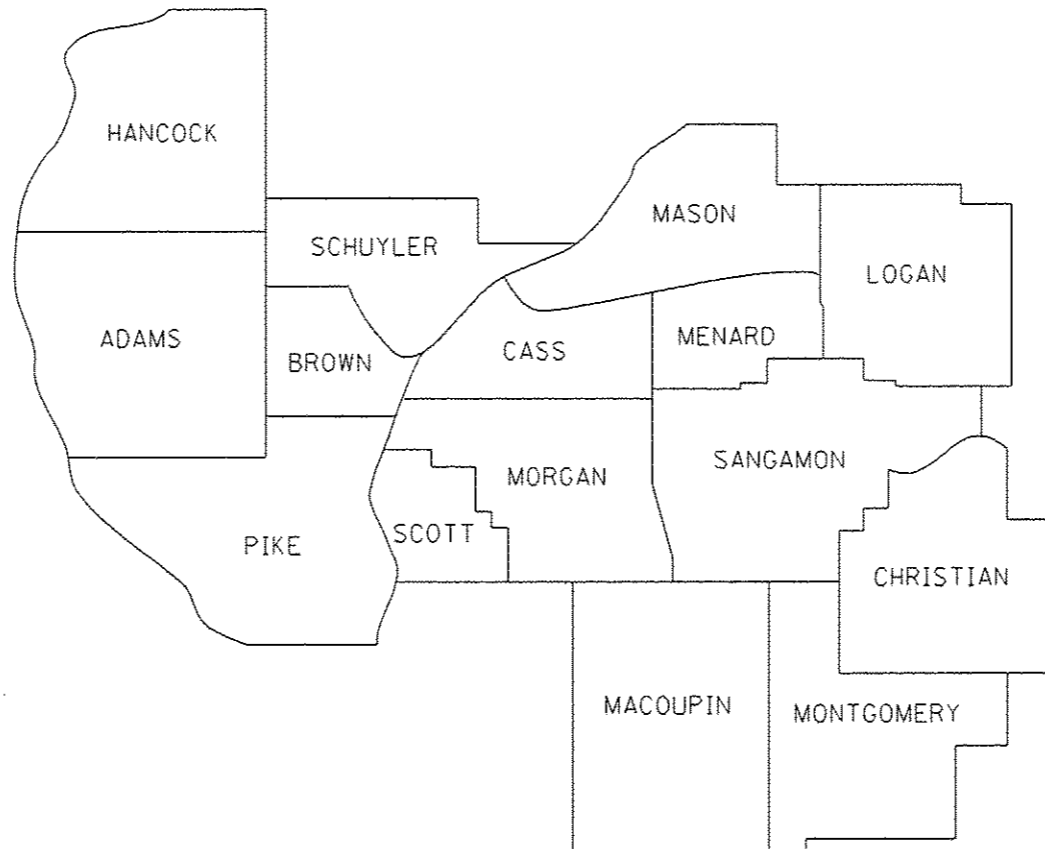


FULL SIZE PLANS HAVE BEEN PREPARED USING STANDARD ENGINEERING SCALES. REDUCED SIZED PLANS WILL NOT CONFORM TO STANDARD SCALES. IN MAKING MEASUREMENTS ON REDUCED PLANS, THE ABOVE SCALES MAY BE USED.

J.U.L.I.E.
JOINT UTILITY LOCATION INFORMATION FOR EXCAVATION
1-800-892-0123
OR 811

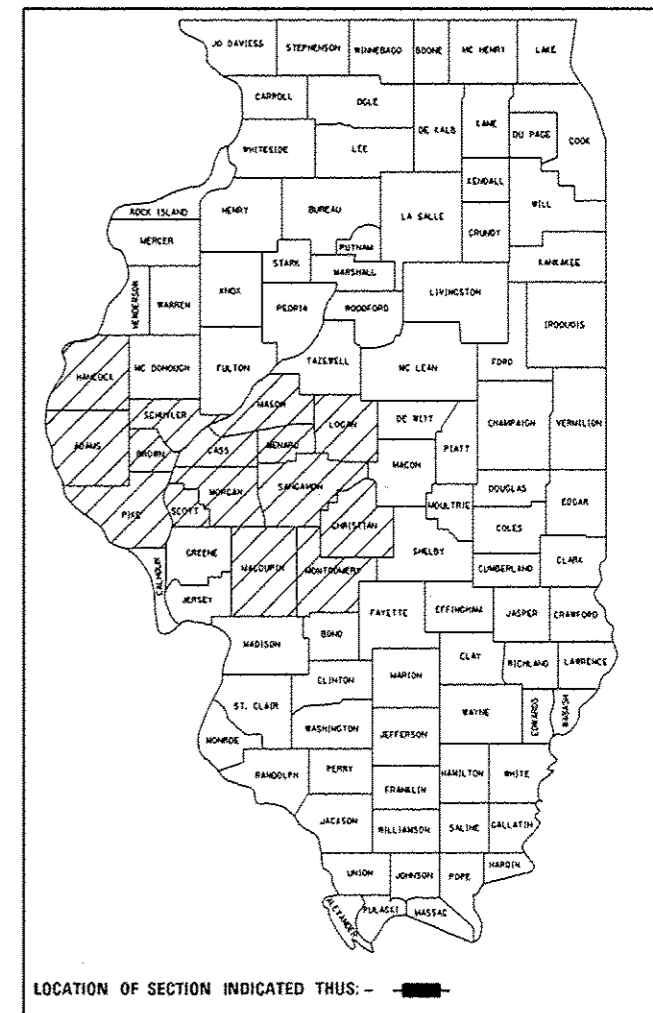
ACTING TEAM ENGINEER: JAY EDWARDS 217-785-0597
TEAM MANAGER: JONATHAN COX 217-782-1378

CONTRACT NO. 72H86



F.A. R.T.C.	SECTION	COUNTY	TOTAL SHEETS	SHEET NO.
*VAR	***	ILLINOIS	17	1
ILLINOIS			CONTRACT NO. T2H86	

*** D6 CABLE/GUARDRAIL 2016



LOCATION OF SECTION INDICATED THUS: - [shaded box] -

STATE OF ILLINOIS
DEPARTMENT OF TRANSPORTATION
DIVISION OF HIGHWAYS

SUBMITTED July 7 20 25
Roger Z. D. [Signature]
DEPUTY DIRECTOR OF HIGHWAYS, REGION ENGINEER

Aug 14 20 15
John D. Baranzelli P.E. [Signature]
ENGINEER OF DESIGN AND ENVIRONMENT

Aug 14 20 15
Dirac Osman P.E. [Signature]
DIRECTOR OF HIGHWAYS, CHIEF ENGINEER

PRINTED BY THE AUTHORITY
OF THE STATE OF ILLINOIS

HIGHWAY STANDARDS

STANDARD NO.	TITLE
630001-10	STEEL PLATE BEAM GUARDRAIL
630301-06	SHOULDER WIDENING FOR TYPE 1 (SPECIAL) GUARDRAIL TERMINALS
631011-09	TRAFFIC BARRIER TERMINAL, TYPE 2
631026-06	TRAFFIC BARRIER TERMINAL, TYPE 5
631031-13	TRAFFIC BARRIER TERMINAL, TYPE 6
635006-03	REFLECTOR AND TERMINAL MARKER PLACEMENT
643001-02	SAND MODULE IMPACT ATTENUATORS
664001-02	CHAIN LINK FENCE
665001-02	WOVEN WIRE FENCE
701001-02	OFF-ROAD OPERATIONS, 2L, 2W, MORE THAN 15' (4.5 M) AWAY
701006-05	OFF-ROAD OPERATIONS, 2L, 2W, 15' (4.5 M) TO 24" (600 MM) FROM PAVEMENT EDGE
701101-04	OFF-ROAD OPERATIONS, MULTILANE, 15' (4.5 M) TO 24" (600 MM) FROM PAVEMENT EDGE
701106-02	OFF-ROAD OPERATIONS, MULTILANE, MORE THAN 15' (4.5 M) AWAY
701201-04	LANE CLOSURE, 2L, 2W, DAY ONLY, FOR SPEEDS > 45 MPH
701301-04	LANE CLOSURE, 2L, 2W, SHORT TIME OPERATIONS
701400-08	APPROACH TO LANE CLOSURE, FREEWAY/EXPRESSWAY
701406-09	LANE CLOSURE, FREEWAY/EXPRESSWAY, DAY OPERATIONS ONLY
701411-09	LANE CLOSURE, MULTILANE, AT ENTRANCE OR EXIT RAMP, FOR SPEEDS > 45 MPH
701421-07	LANE CLOSURE, MULTILANE, DAY OPERATIONS ONLY, FOR SPEEDS > 45 MPH TO 55 MPH
701422-07	LANE CLOSURE, MULTILANE, FOR SPEEDS > 45 MPH TO 55 MPH
701426-07	LANE CLOSURE, MULTILANE, INTERMITTENT OR MOVING OPERATION, FOR SPEEDS > 45 MPH
701427-03	LANE CLOSURE, MULTILANE, INTERMITTENT OR MOVING OPERATION, FOR SPEEDS < 40 MPH
701428	TRAFFIC CONTROL SET UP AND REMOVAL FREEWAY/EXPRESSWAY
701456-03	PARTIAL EXIT RAMP CLOSURE FREEWAY/EXPRESSWAY
701501-06	URBAN LANE CLOSURE, 2L, 2W, UNDIVIDED
701502-06	URBAN LANE CLOSURE, 2L, 2W, WITH BIDIRECTIONAL LEFT TURN LANE
701601-09	URBAN LANE CLOSURE, MULTILANE, 1W OR 2W WITH NONTRAVERSABLE MEDIAN
701602-07	URBAN LANE CLOSURE, MULTILANE, 2W WITH BIDIRECTIONAL LEFT TURN LANE
701606-10	URBAN LANE CLOSURE, MULTILANE, 2W WITH MOUNTABLE MEDIAN
701701-09	URBAN LANE CLOSURE, MULTILANE INTERSECTION
701901-04	TRAFFIC CONTROL DEVICES

GENERAL NOTES

ALL DISTURBED AREAS CAUSED BY THE CONTRACTOR'S OPERATIONS SHALL BE GRADED AND SEEDED WITH CLASS 2 ROADSIDE MIXTURE AND FERTILIZED AS STATED IN SECTION 250 OF THE STANDARD SPECIFICATIONS. COST SHALL BE CONSIDERED INCLUDED IN THE UNIT COST OF THE WORK BEING PERFORMED.

REMOVAL OF DAMAGED IMPACT ATTENUATORS SHALL BE INCLUDED IN THE COST OF THE IMPACT ATTENUATOR BEING INSTALLED.

REMOVAL AND DISPOSAL OF DAMAGED FENCE SHALL BE INCLUDED IN THE COST OF THE FENCE BEING INSTALLED.

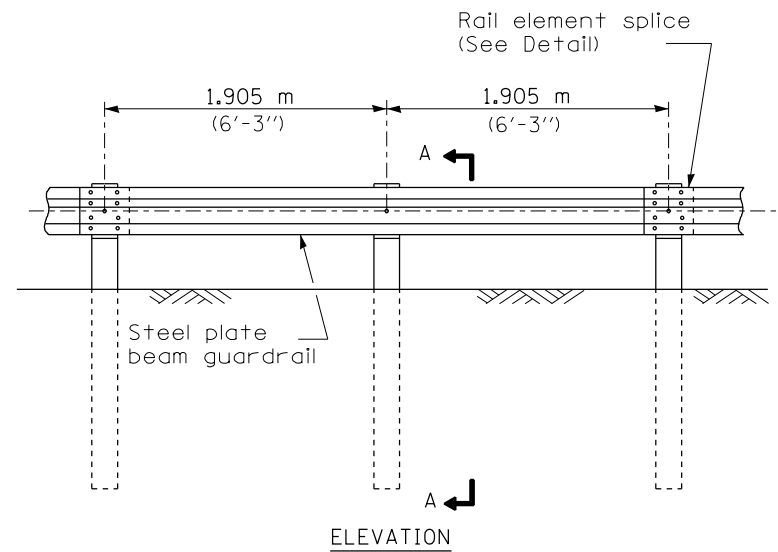
DISTRICT SIX	
EXAMINED	<u>JUNE 18th</u> 20 <u>15</u>
	<i>John C. Nyman</i>
OPERATIONS ENGINEER	
EXAMINED	<u>June 16</u> 20 <u>15</u>
	<i>Ron Aechambean</i>
PROJECT IMPLEMENTATION ENGINEER	
EXAMINED	<u>June 18</u> 20 <u>15</u>
	<i>Jeffrey P. Meyer</i>
PROGRAM DEVELOPMENT ENGINEER	

REV.

FILE NAME *	USER NAME * conjr	DESIGNED - JWC	REVISED -	STATE OF ILLINOIS DEPARTMENT OF TRANSPORTATION	GENERAL NOTES	F.A. RTE.	SECTION	COUNTY	TOTAL SHEETS	SHEET NO.
g:\11084EBID\INTE0\illinois.gov\PIDOT\Documents\DOT Offices\District 6\Projects\0671\BIB\11084EBID\CAD\DWG\0672H86-shi-gennet\REVISED -		CHECKED - JWC	REVISED -			*VAR	***	VARIOUS	17	2
Default	PLOT SCALE * 100.0000' / in.	DATE -	REVISED -			SCALE:	SHEET OF SHEETS	STA. TO STA.	ILLINOIS FED. AID PROJECT CONTRACT NO. 72H86	

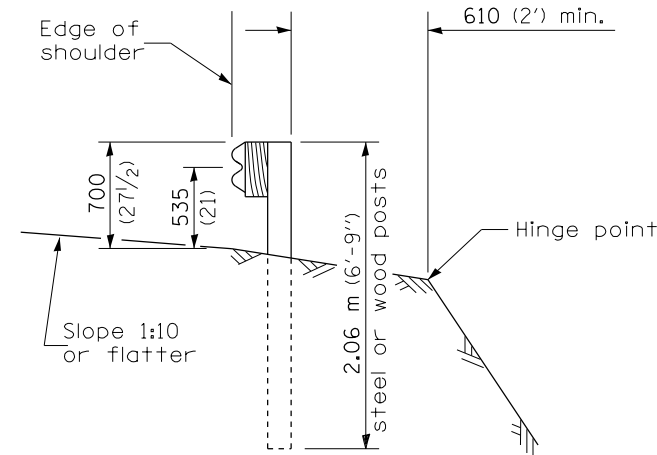
CODE NO.	ITEM	UNIT	TOTAL QUANTITY	CONSTRUCTION CODE		
				REGULAR PROGRAM	MCHD	STATEWIDE HIGH-TENSION CABLE RAIL REPAIR
				ROADWAY	ROADWAY	ROADWAY
				0021	0021	0021
				6-00664-0400	6-00664-9995	0-01846-6001
X0325902	REMOVE AND REPLACE POSTS (GIBRALTAR)	EACH	100		50	50
X0327490	REPAIR HIGH TENSION CABLE (NU-CABLE)	FOOT	150		70	80
X0327491	REPAIR POSTS (NU-CABLE)	EACH	32		20	12
X0327492	REMOVE AND REPLACE POSTS (NU-CABLE)	EACH	60		20	40
X0327493	REPAIR HIGH TENSION BARRIER TERMINAL (NU-CABLE)	EACH	4		2	2
X6431220	REMOVE AND REPLACE IMPACT ATTENUATOR SAND MODULE	EACH	20	6	14	
X7011834	TRAFFIC CONTROL AND PROTECTION, CALL OUT WORK	EACH	21	5	16	
X7011836	TRAFFIC CONTROL AND PROTECTION, FREEWAY/EXPRESSWAY, CALL OUT WORK	EACH	31	5	12	14

FILE NAME :	USER NAME : sparkg	DESIGNED - JWC	REVISED -	STATE OF ILLINOIS DEPARTMENT OF TRANSPORTATION	SUMMARY OF QUANTITIES				F.A. RTE.	SECTION	COUNTY	TOTAL SHEETS	SHEET NO.	
\\IL084EBIDINTEC.illinois.gov\PV1007\Documents\1007 Offices\District 6\Projects\067	DRN\WData\640\JWC\0872406-ent-500.dwg	CHECKED - JWC	REVISED -		SCALE:	SHEET 3	OF 3	SHEETS	STA.	TO STA.	ILLINOIS FED. AID PROJECT	VARIOUS	17	5
Default	PLOT SCALE * 100.0000 * / in	DATE -	REVISED -		CONTRACT NO. 72H86									
	PLOT DATE * 7/7/2015				*** D6 CABLE/GUARDRAIL 2016									

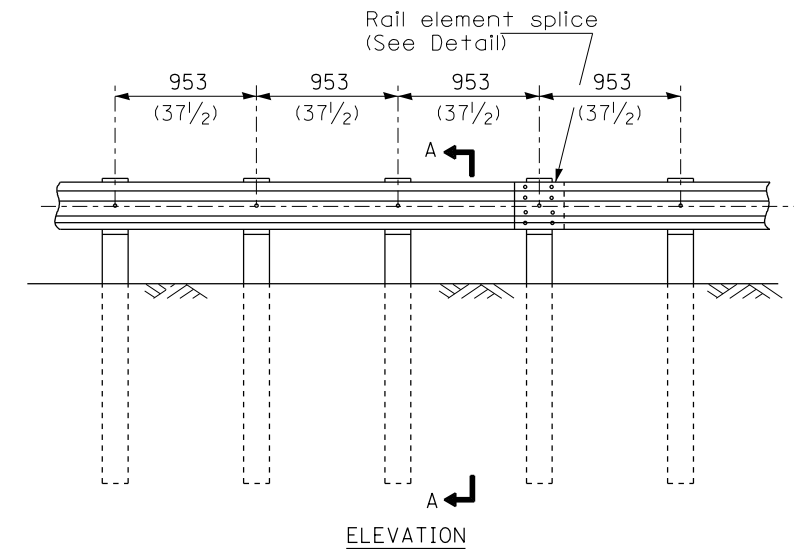


TYPE A

1.905 m (6'-3'') Typical post spacing

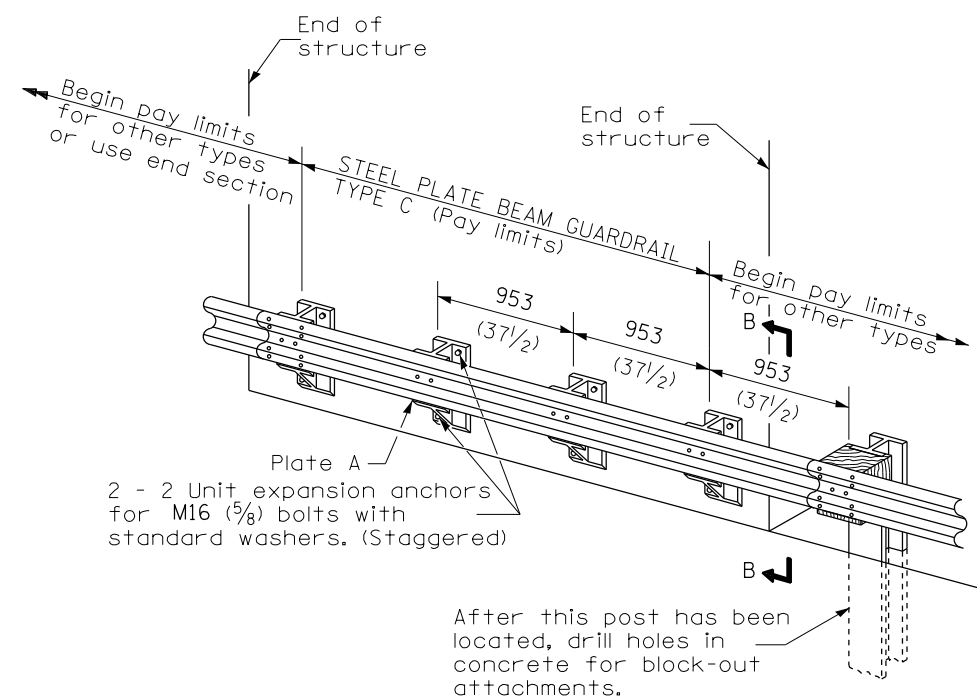


SECTION A-A



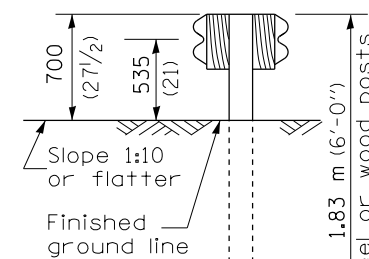
TYPE B

953 (37 1/2) Closed post spacing

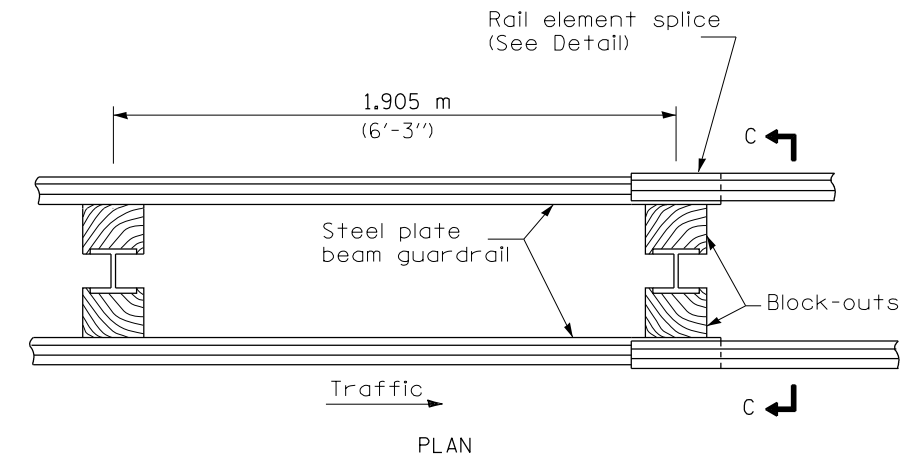


TYPE C

953 (37 1/2) Block-out spacing

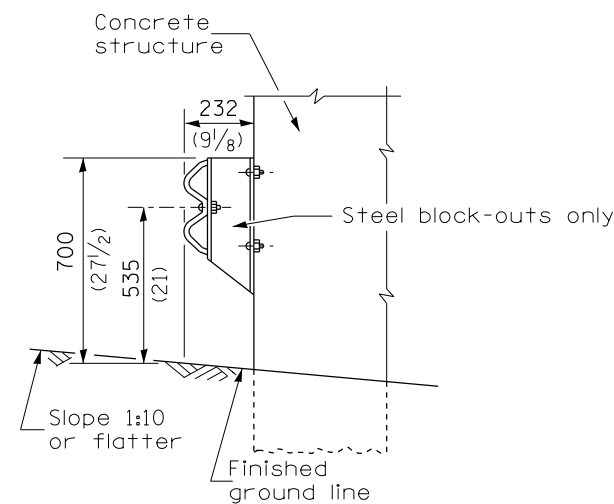


SECTION C-C



TYPE D

Double steel plate beam guardrail
1.905 m (6'-3'') typical post spacing



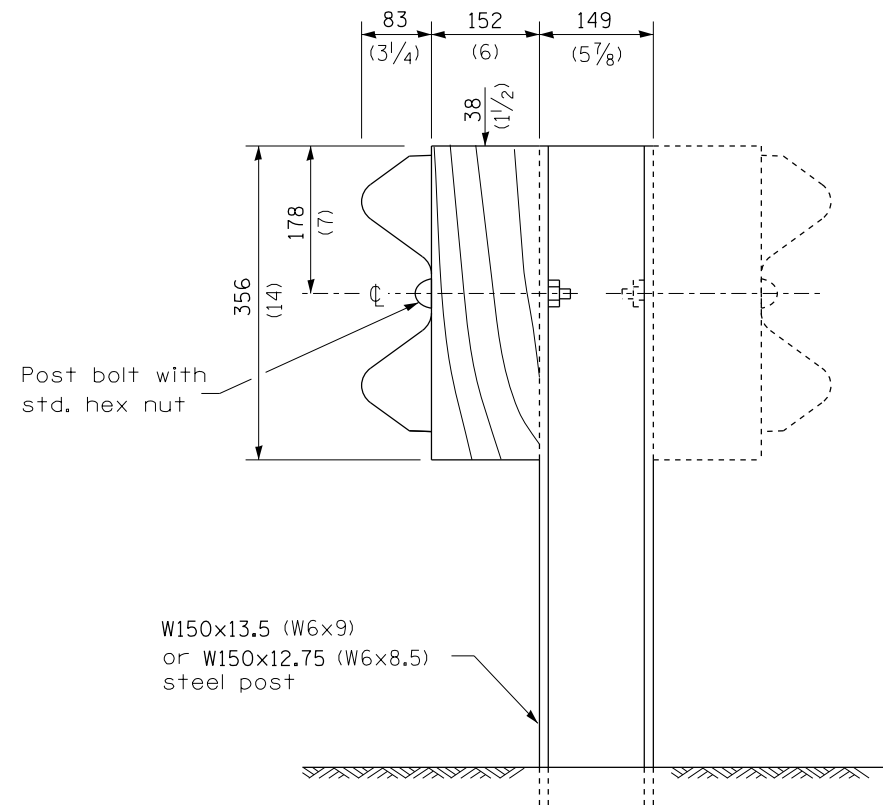
SECTION B-B

GENERAL NOTES

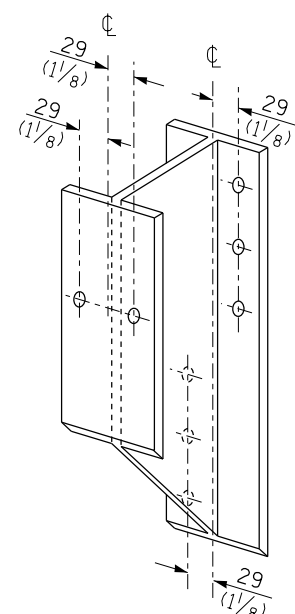
All slope ratios are expressed as units of vertical displacement to units of horizontal displacement (V:H).

All dimensions are in millimeters (inches) unless otherwise shown.

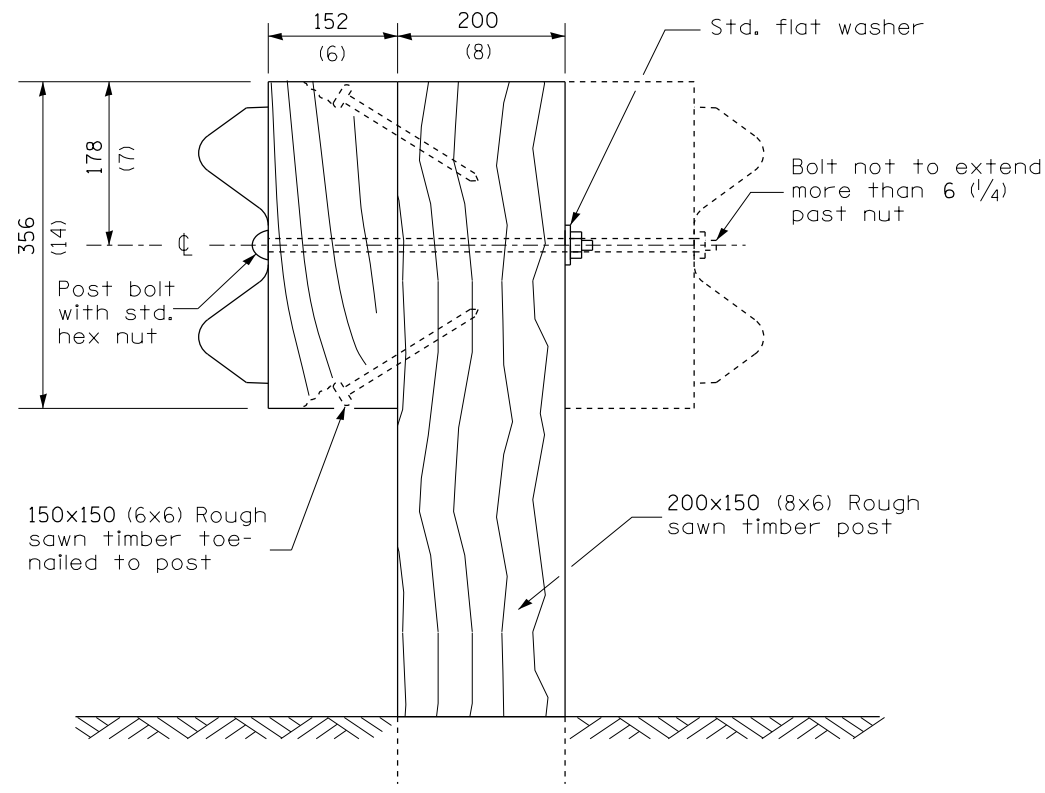
FILE NAME =	USER NAME = sparksgw	DESIGNED -	REVISED -	STATE OF ILLINOIS DEPARTMENT OF TRANSPORTATION	PRE-MGS HIGHWAY STANDARD 630001-06 STEEL PLATE BEAM GUARDRAIL EFFECTIVE 4-1-06	F.A. RTE.	SECTION	COUNTY	TOTAL SHEETS	SHEET NO.
pw:\IL\084EBIDINTEG\illinois.gov\PIWIDOT\Documents\DOT Offices\District 6\Projects\0672486\Drawings\630001-06\630001-06.dgn	PLOT SCALE = 26.0000' / in.	CHECKED -	REVISED -			VAR	***	VARIOUS	17	6
Default	PLOT DATE = 7/7/2015	DATE -	REVISED -			SCALE: SHEET 1 OF 4 SHEETS STA. TO STA.		ILLINOIS FED. AID PROJECT		CONTRACT NO. 72H86



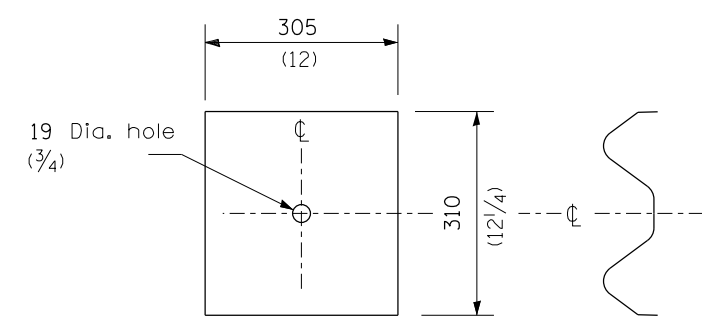
STEEL POST CONSTRUCTION



STEEL BLOCK-OUT DETAIL



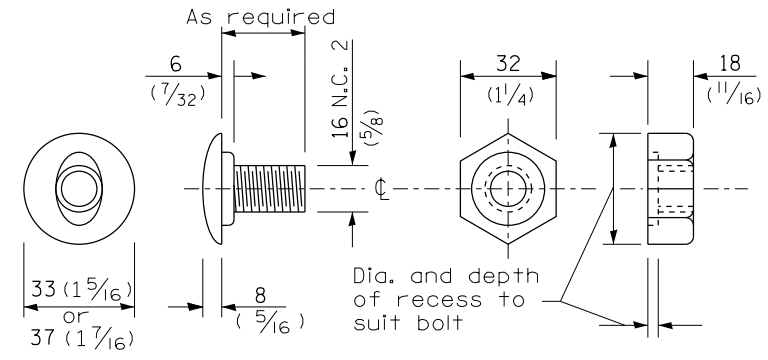
WOOD POST CONSTRUCTION



NOTE

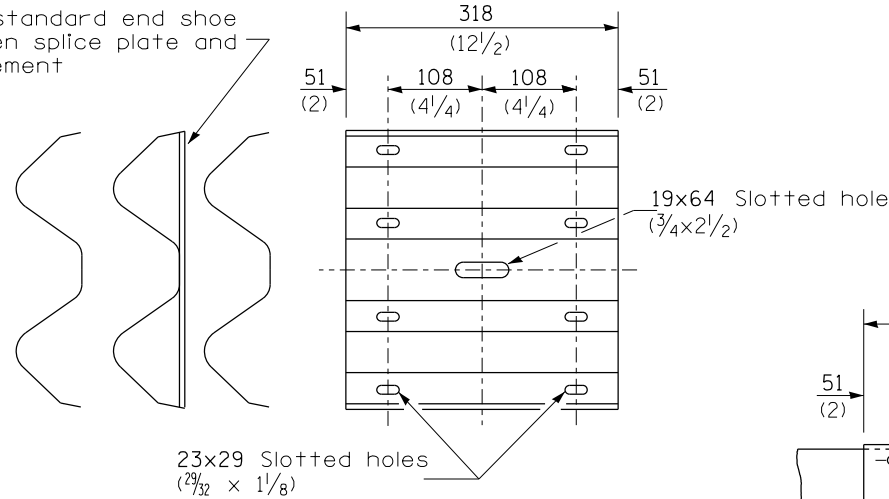
Plate A shall be placed between rail element and block-out at non-splice mounting points only when steel block-outs are used.

PLATE A

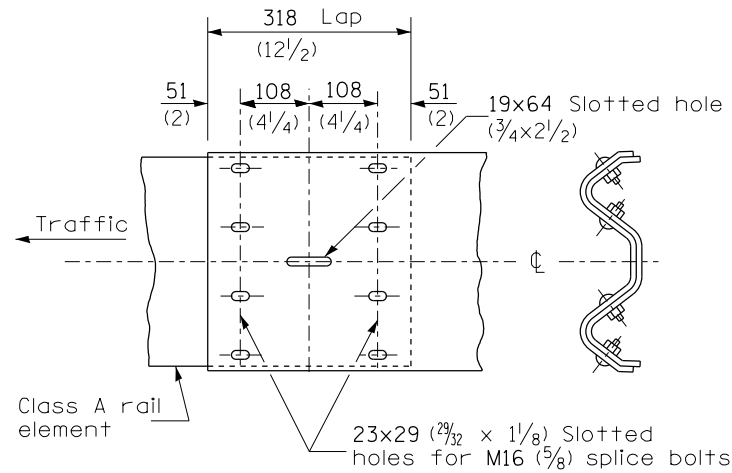


POST OR SPLICE BOLT & NUT

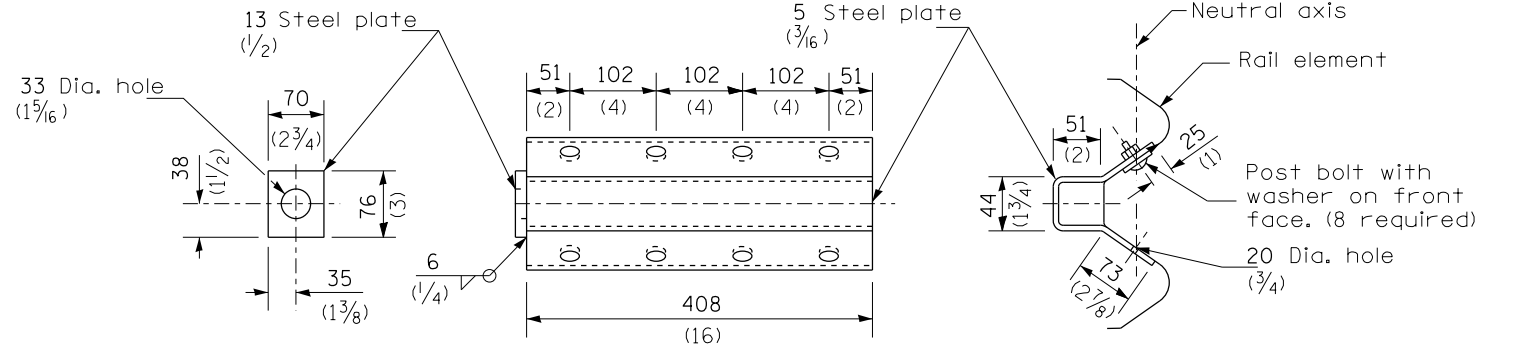
Place standard end shoe between splice plate and rail element



SPLICE PLATE

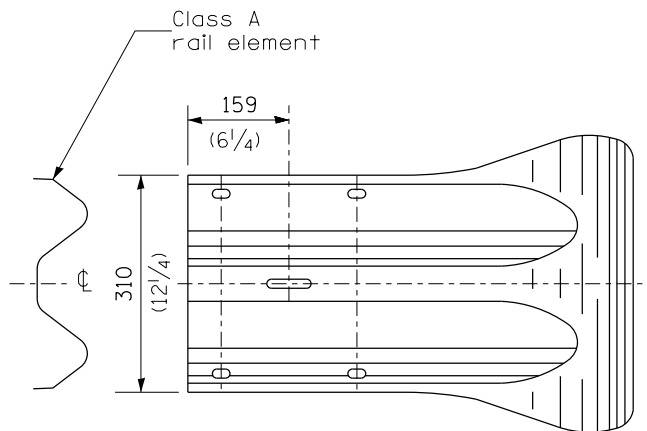
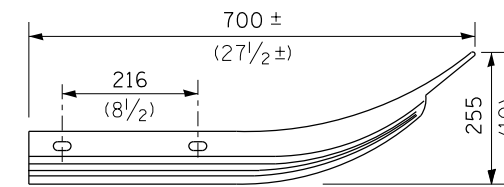


RAIL ELEMENT SPLICE

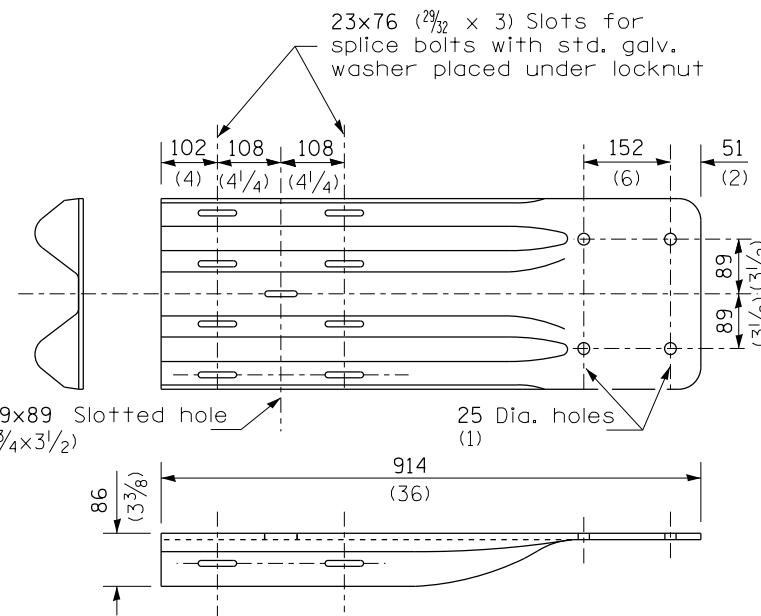


NOTE
Anchor plate T shall be used to attach cable assembly to guardrail when required on traffic barrier terminals.

ANCHOR PLATE T DETAILS



END SECTION



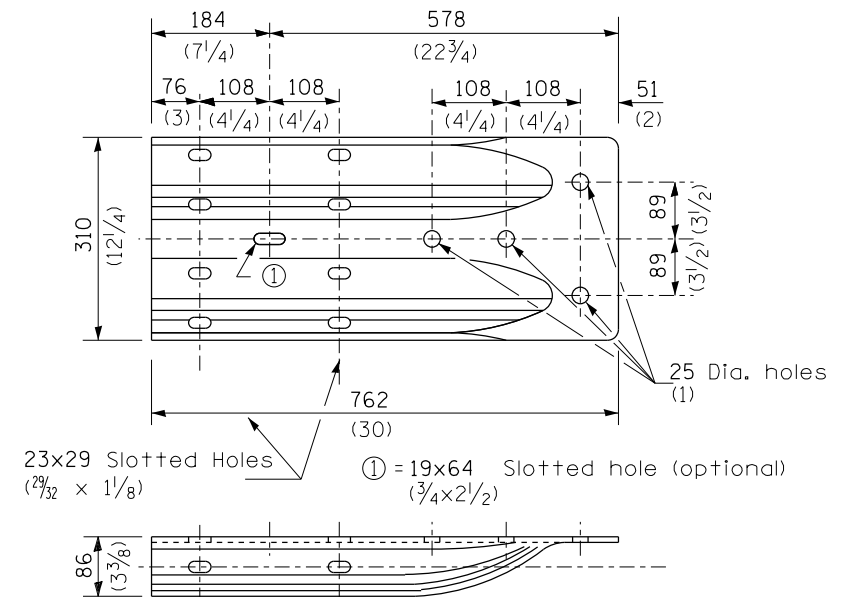
NOTE

When end shoe is attached to a bridge parapet which has an expansion joint, the bolts shall be provided with a locknut or double nut and shall be tightened only to a point that will allow guardrail movement.

The standard end shoe shall be attached to the concrete with pre-drilled or self-drilling anchor bolts. The anchor cone shall be set flush with the surface of the concrete.

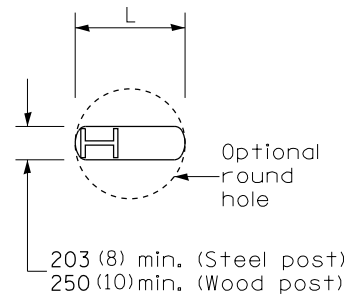
Externally threaded studs protruding from the surface of the concrete will not be permitted.

END SHOE

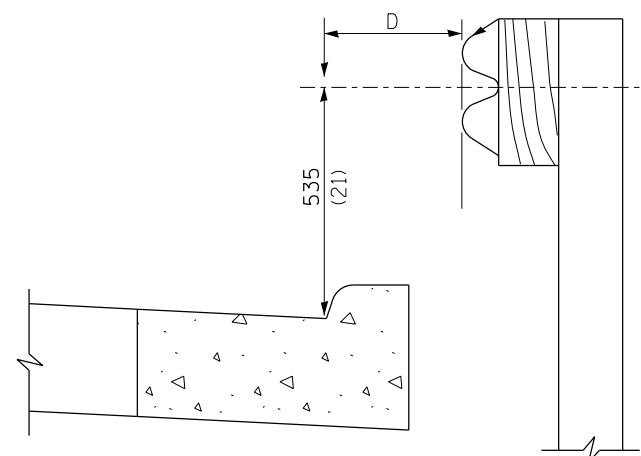


ALTERNATE END SHOE

FILE NAME =	USER NAME = sparksgw	DESIGNED -	REVISED -	STATE OF ILLINOIS DEPARTMENT OF TRANSPORTATION	PRE-MGS HIGHWAY STANDARD 630001-06 STEEL PLATE BEAM GUARDRAIL EFFECTIVE 4-1-06	F.A. RE.	SECTION	COUNTY	TOTAL SHEETS	SHEET NO.	
p:\11\084EBIDINTEG.illinois.gov\PIWIDOT\Documents\DOT Offices\District 6\Projects\0672\Drawings\60\Sheets\0672H86-sht-630001-06.dgn	PLotted SCALE = 26.0000' / in.	CHECKED -	REVISED -			VAR	***	VARIOUS	17	8	
Default	PLOT DATE = 7/7/2015	DATE -	REVISED -			SCALE: SHEET 3 OF 4 SHEETS STA. TO STA.		ILLINOIS FED. AID PROJECT		CONTRACT NO. 72H86	
*** D6 CABLE/GUARDRAIL 2016											



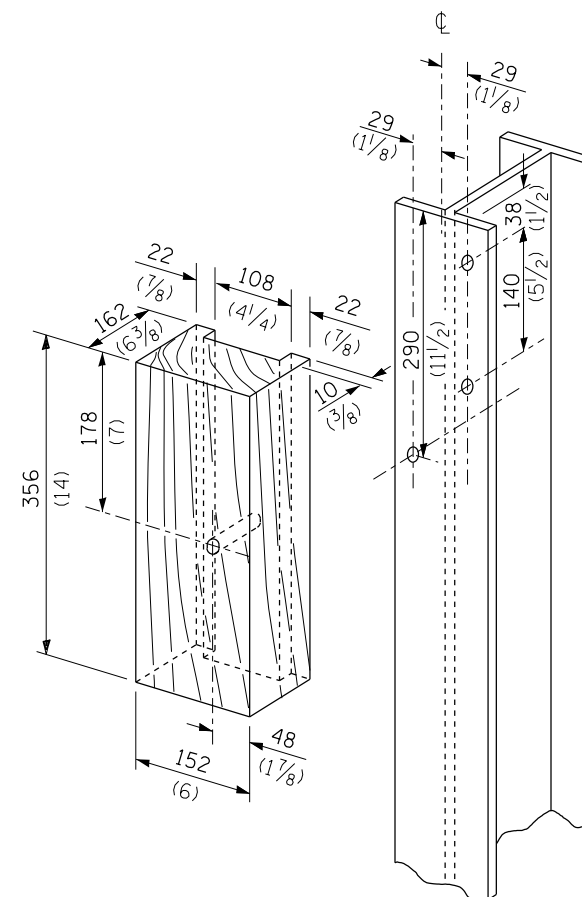
PLAN



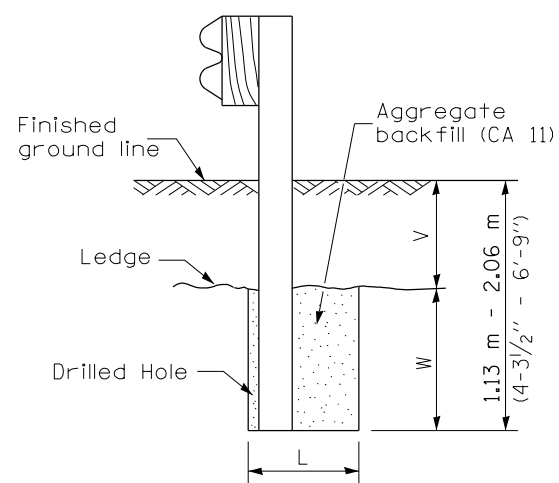
Note:
If it is necessary for D to be more than 300 (12) and less than 3.0 m (10'-0") type M-5 (M-2) curb and gutter (Std. 606001) shall be used in front of and in advance of the guardrail.

GUARDRAIL PLACED BEHIND CURB

(D = 0 desirable to 300 (12) maximum)



WOOD BLOCK-OUT AND STEEL POST DETAILS

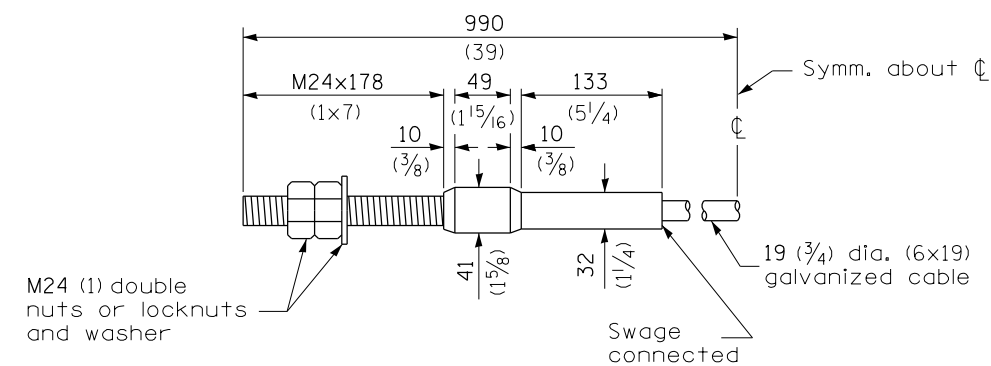


Note:
Ledge line is top of rock ledge or hard slag fill.

ELEVATION

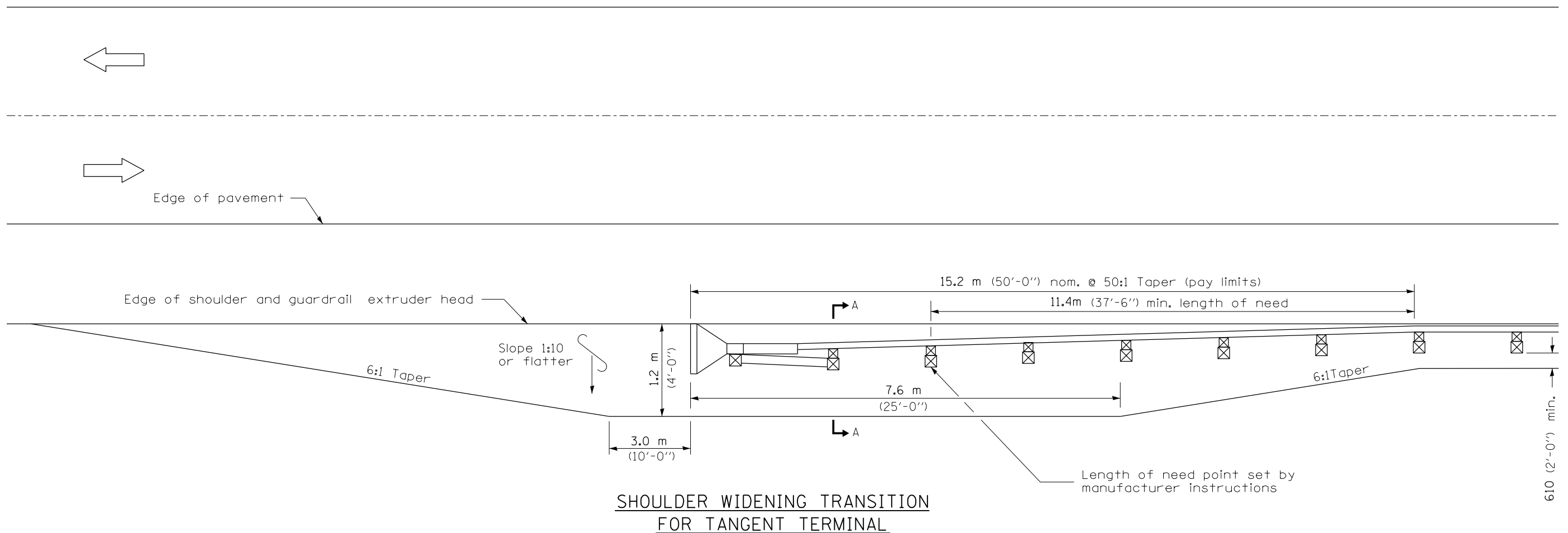
FOOTING FOR POST WHEN IMPERVIOUS MATERIAL IS ENCOUNTERED

V	W	L	
		Steel Post	Wood Post
0 - 460 (0 - 18)	610 (24)	530 (21)	580 (23)
>460 - 825 (>18 - 41.5)	305 (12)	203 (8)	250 (10)
>825 - 1.13 m (>41.5 - 53.5)	305 - 0 (12 - 0)	203 (8)	250 (10)

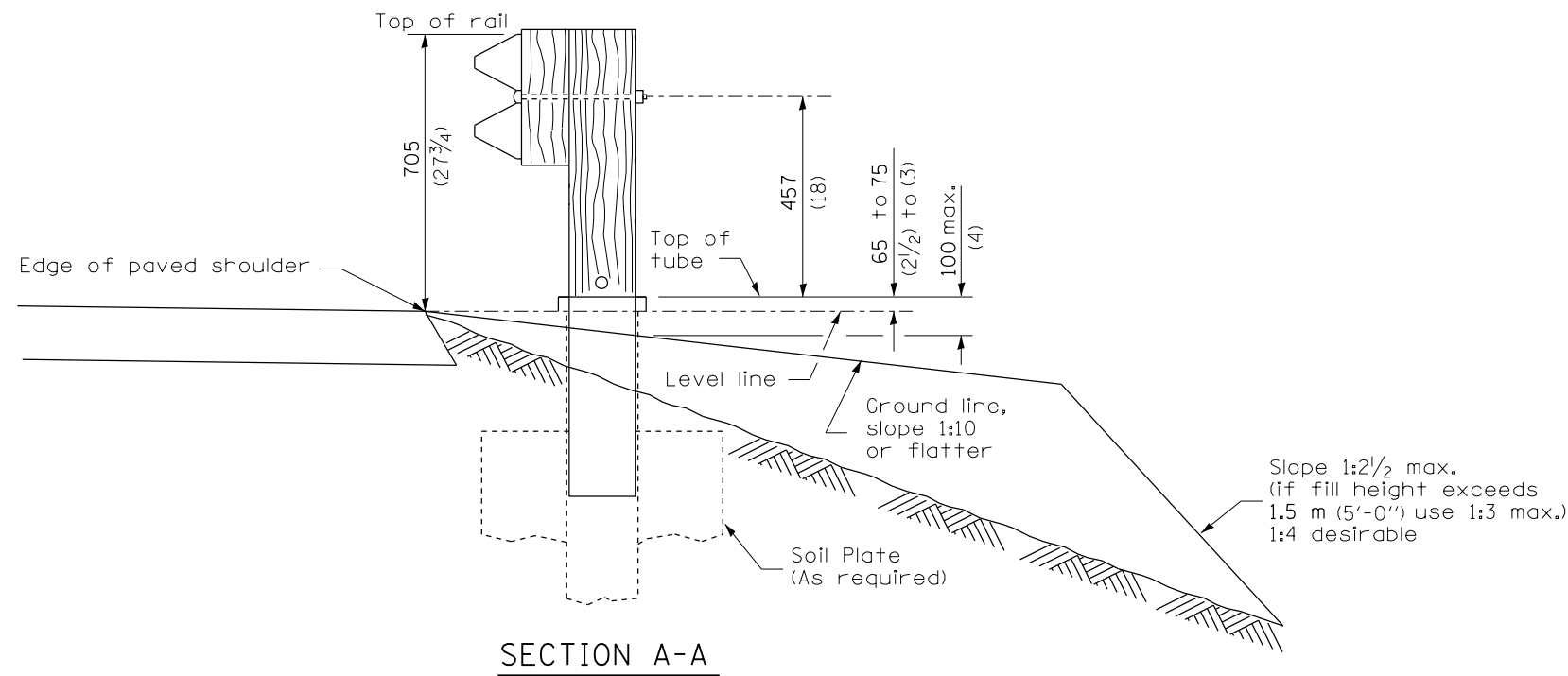


CABLE ASSEMBLY

(18,100 kg (40,000 lbs.) min. breaking strength)
Tighten to taut tension.



**SHOULDER WIDENING TRANSITION
FOR TANGENT TERMINAL**



SECTION A-A

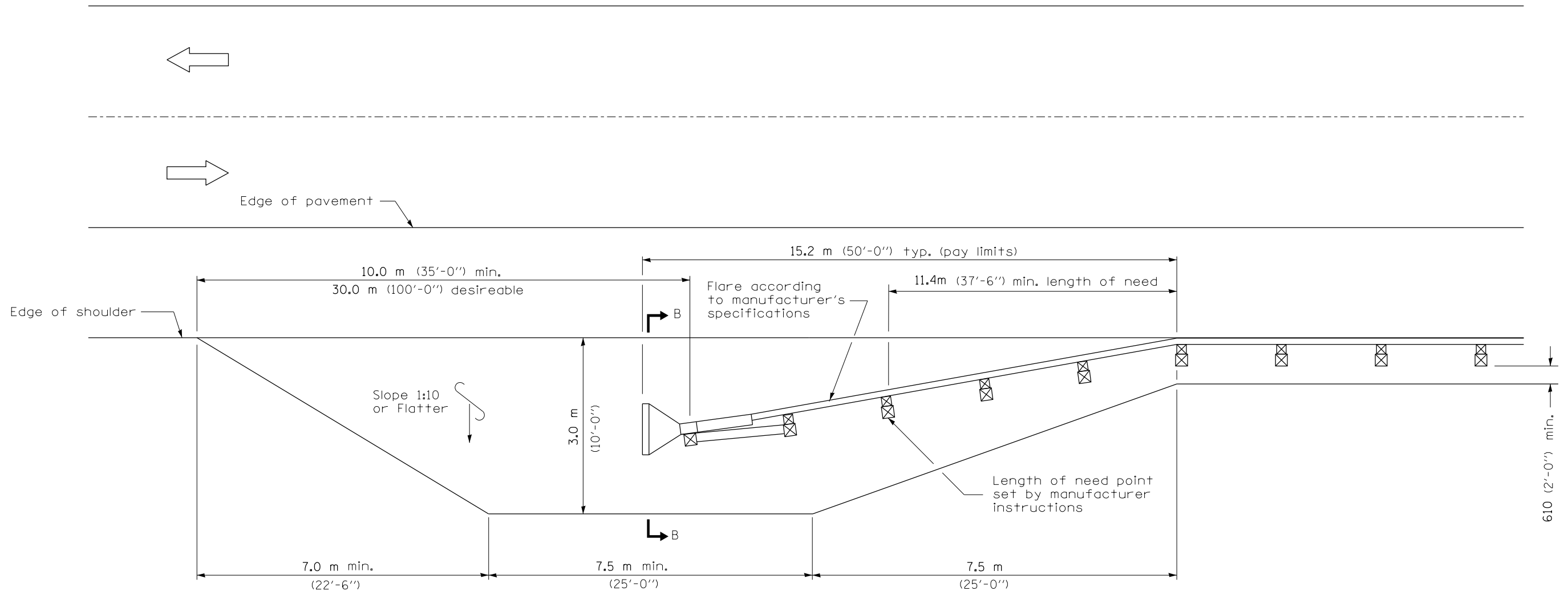
GENERAL NOTES

50:1 Taper required so the guardrail head will not encroach on the shoulder.

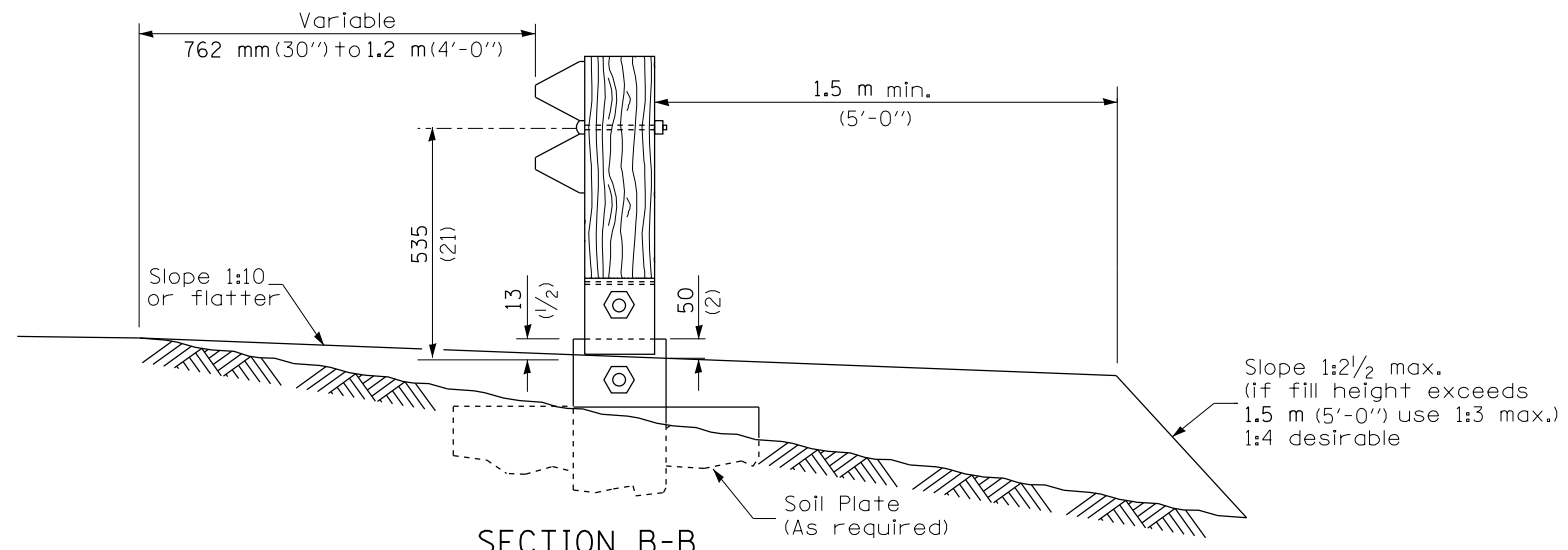
All slope ratios are expressed as units of vertical displacement to units of horizontal displacement (V:H).

All dimensions are in millimeters (inches) unless otherwise shown.

FILE NAME =	USER NAME = sparksqw	DESIGNED -	REVISED -	STATE OF ILLINOIS DEPARTMENT OF TRANSPORTATION	PRE-MGS HIGHWAY STANDARD 630301-03 SHOULDER WID. FOR TYPE 1 (SPL) GUARDRAIL TERMINAL EFFECTIVE 4-1-06	F.A. RTE.	SECTION	COUNTY	TOTAL SHEETS	SHEET NO.
pw:\IL\084EBIDINTEG\illinois.gov\PIDOT\Documents\IDOT Offices\District 6\Projects\0672\Drawings\EA0\Sheets\0672H86-sht-630301-03.dgn	PLOT SCALE = 26.0000' / in.	CHECKED -	REVISED -			•VAR	•••	VARIOUS	17	10
Default	PLOT DATE = 7/7/2015	DATE -	REVISED -			SCALE: SHEET 1 OF 2 SHEETS STA. TO STA.		ILLINOIS FED. AID PROJECT CONTRACT NO. 72H86		

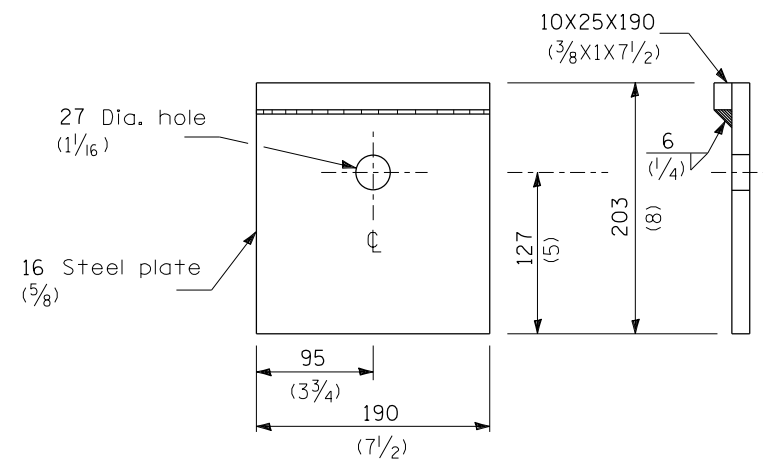


**SHOULDER WIDENING TRANSITION
FOR FLARED TERMINAL**

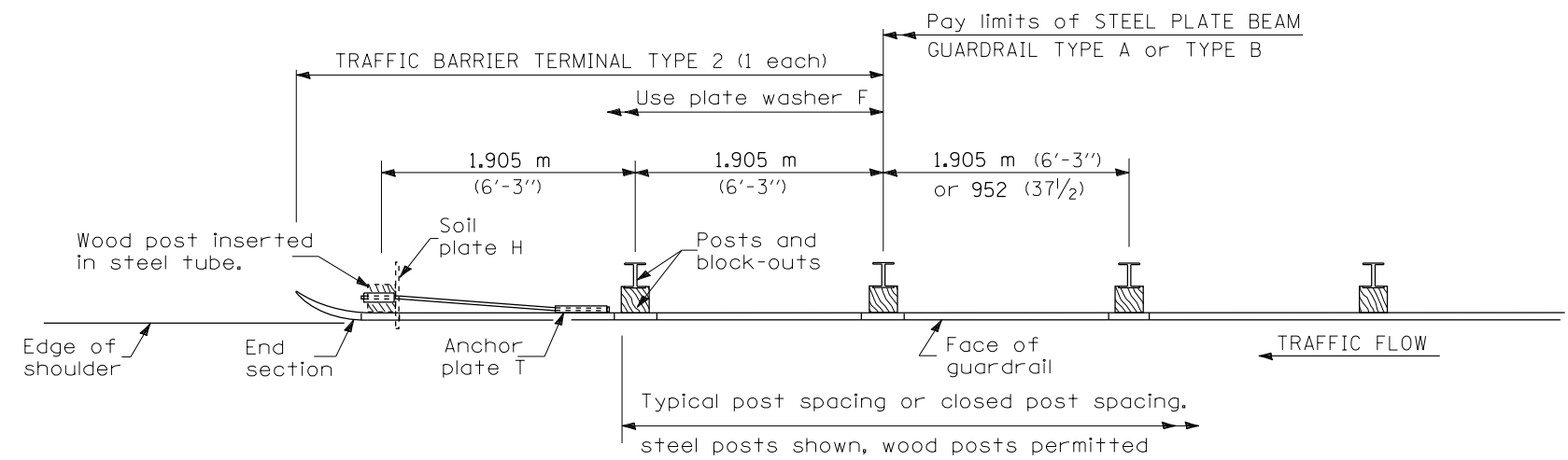


SECTION B-B
(End section omitted for clarity.)

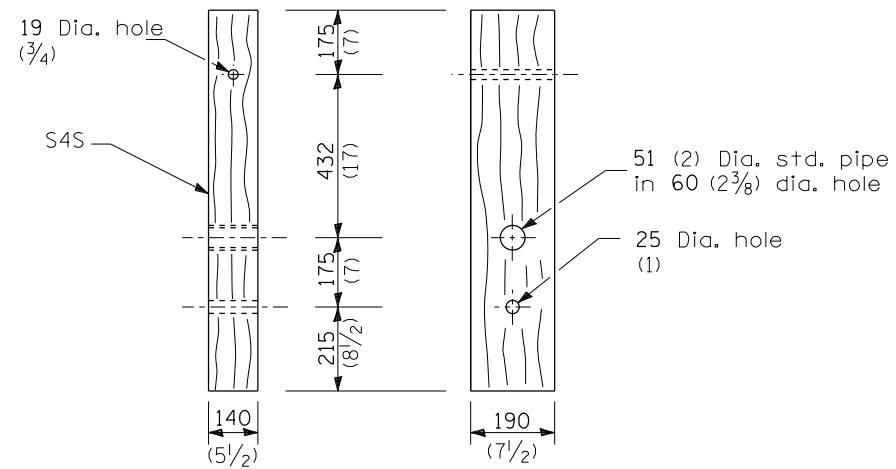
FILE NAME =	USER NAME = sparksgw	DESIGNED -	REVISED -	STATE OF ILLINOIS DEPARTMENT OF TRANSPORTATION	PRE-MGS HIGHWAY STANDARD 630301-03 SHOULDER WID. FOR TYPE 1 (SPL) GUARDRAIL TERMINAL EFFECTIVE 4-1-06			F.A. RTE.	SECTION	COUNTY	TOTAL SHEETS	SHEET NO.		
pw:\IL\084EBIDINTEG.illinois.gov\PIWIDOT\Documents\DOT Offices\District 6\Projects\0672\Drawings\EA0\Drawings\672H86-sht-630301-REVISED-Id.BR.Term.dgn	PLOT SCALE = 26.0000' / in.	CHECKED -	REVISED -		SCALE:	SHEET 2	OF 2	SHEETS	STA.	TO STA.	ILLINOIS FED. AID PROJECT	VARIOUS	17	11
Default	PLOT DATE = 7/7/2015	DATE -	REVISED -								CONTRACT NO. 72H86			
												*** D6 CABLE/GUARDRAIL 2016		



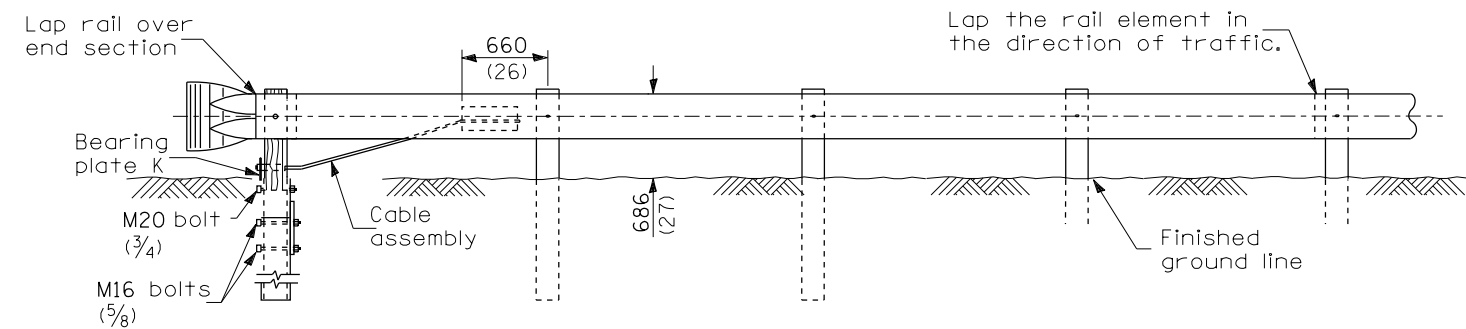
BEARING PLATE K



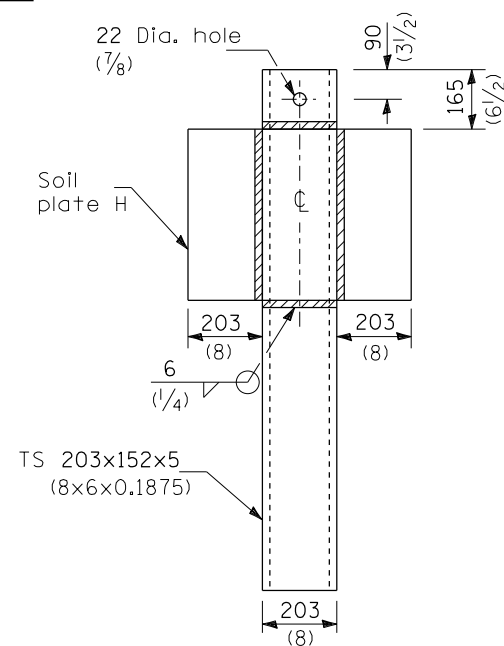
PLAN



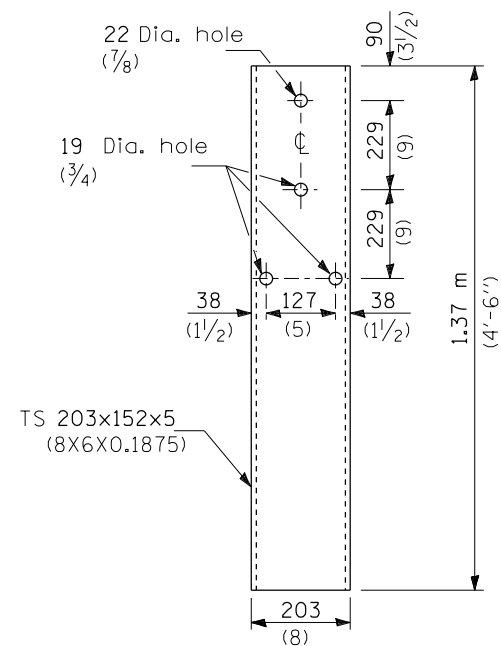
WOOD POST



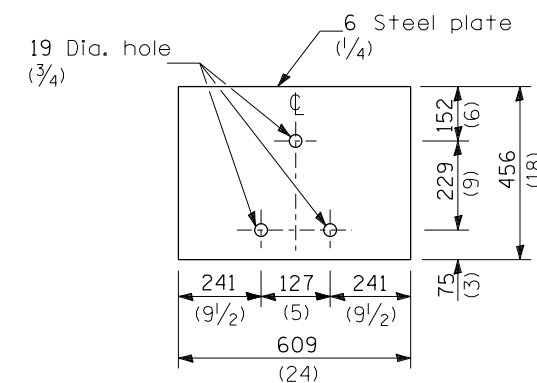
ELEVATION



ALTERNATE SOIL PLATE CONNECTION



STEEL TUBE



SOIL PLATE H

GENERAL NOTES

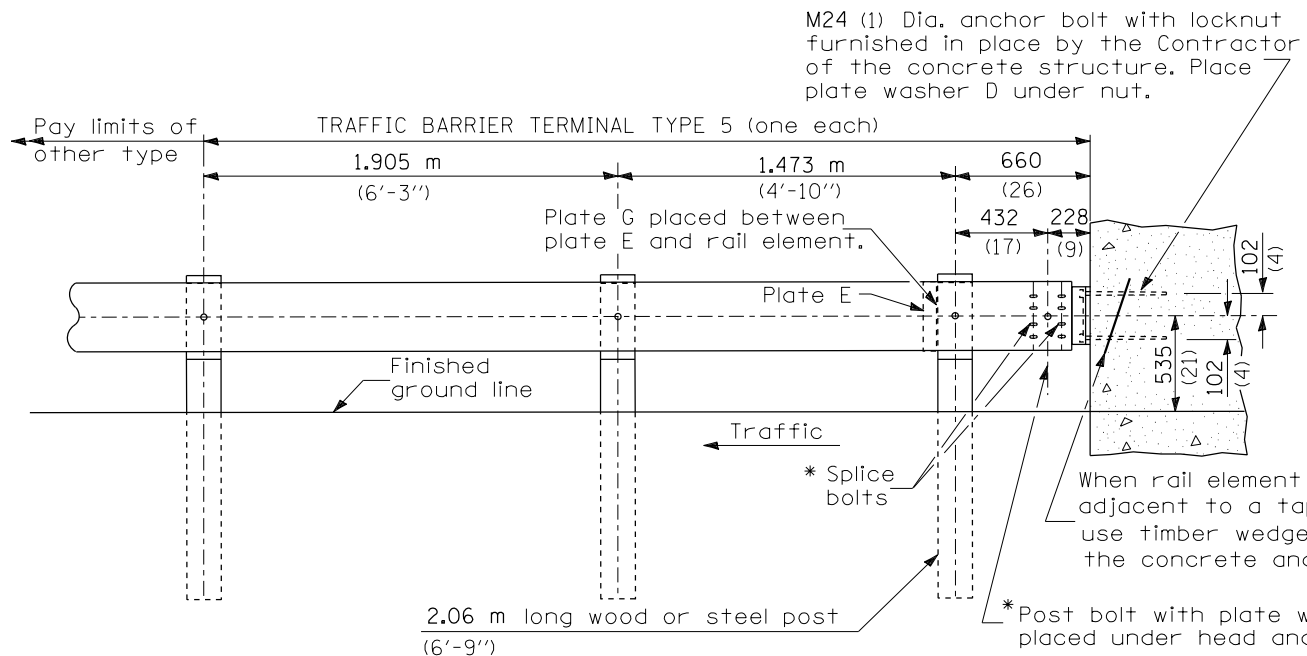
See Standard 630001 for details of guardrail not shown.

Use plate washer F at all posts.

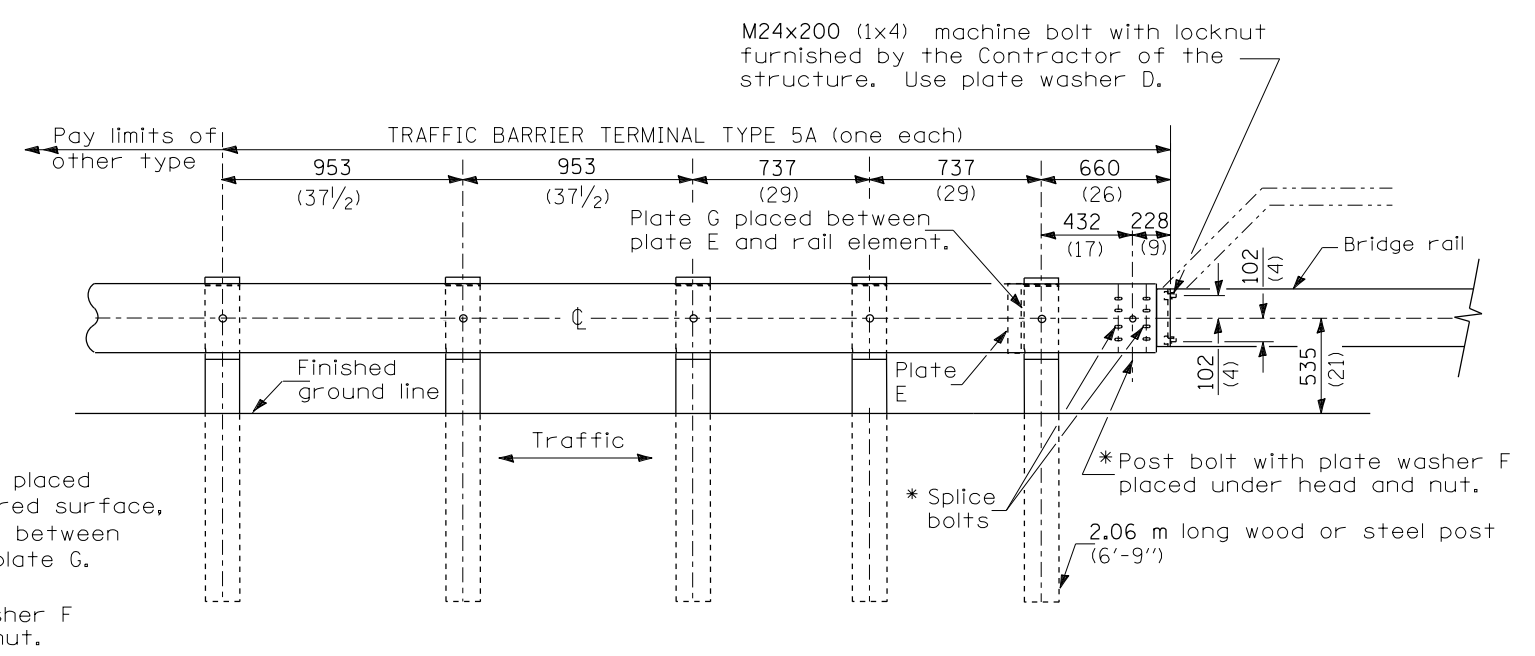
The bearing plate K shall be held in position by (2) two eight penny nails driven into the post and bent over the top of the plate.

All dimensions are in millimeters (inches) unless otherwise shown.

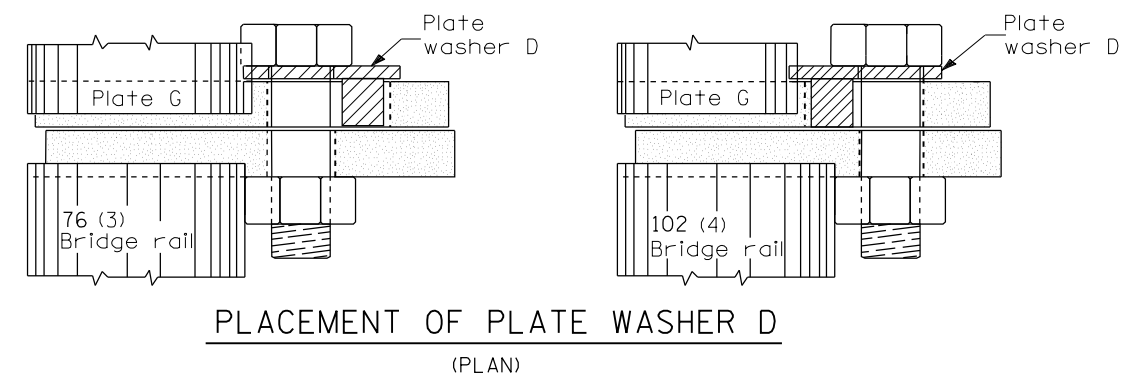
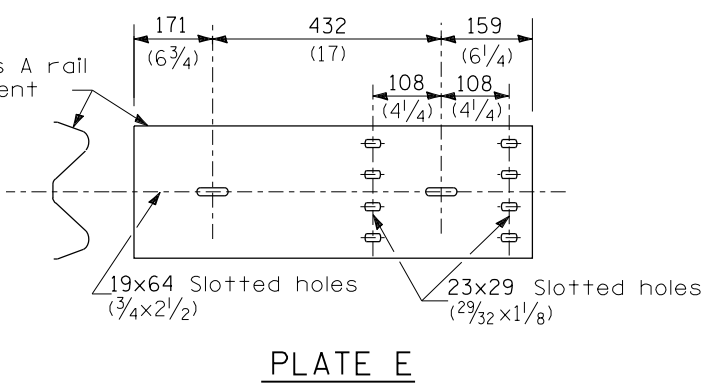
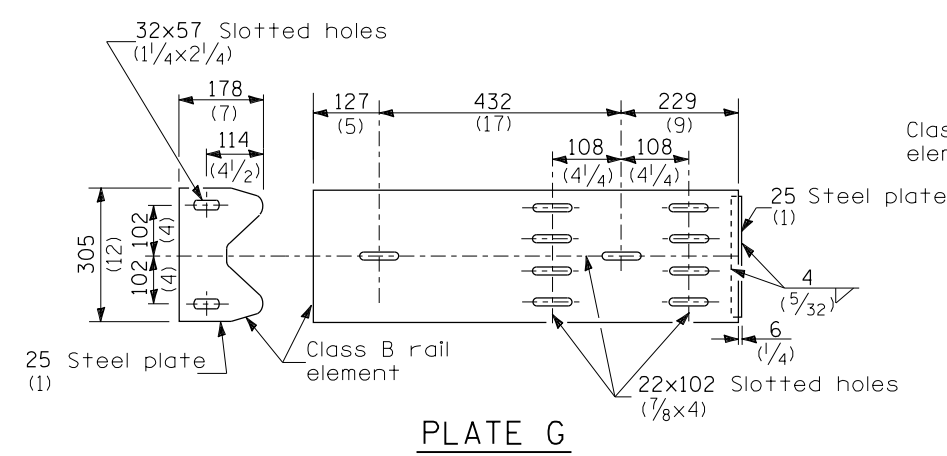
FILE NAME =	USER NAME = sparksgw	DESIGNED -	REVISED -	STATE OF ILLINOIS DEPARTMENT OF TRANSPORTATION	PRE-MGS HIGHWAY STANDARD 631011-02 TRAFFIC BARRIER TERMINAL, TYPE 2 EFFECTIVE 4-1-06	F.A. RTE.	SECTION	COUNTY	TOTAL SHEETS	SHEET NO.	
pw:\IL\084EBIDINTEG\illinois.gov\PWIDOT\Documents\DOT Offices\District 6\Projects\0672\Drawings\0672\0672-01\0672-01-01\0672-01-01-01.dgn	PLOT SCALE = 26.0000' / in.	CHECKED -	REVISED -			•VAR	•••	VARIOUS	17	12	
Default	PLOT DATE = 7/7/2015	DATE -	REVISED -			CONTRACT NO. 72H86		ILLINOIS FED. AID PROJECT			
						SCALE:	SHEET 1 OF 1 SHEETS	STA.	TO STA.	*** D6 CABLE/GUARDRAIL 2016	



TYPE 5 - CONCRETE BRIDGE PARAPET

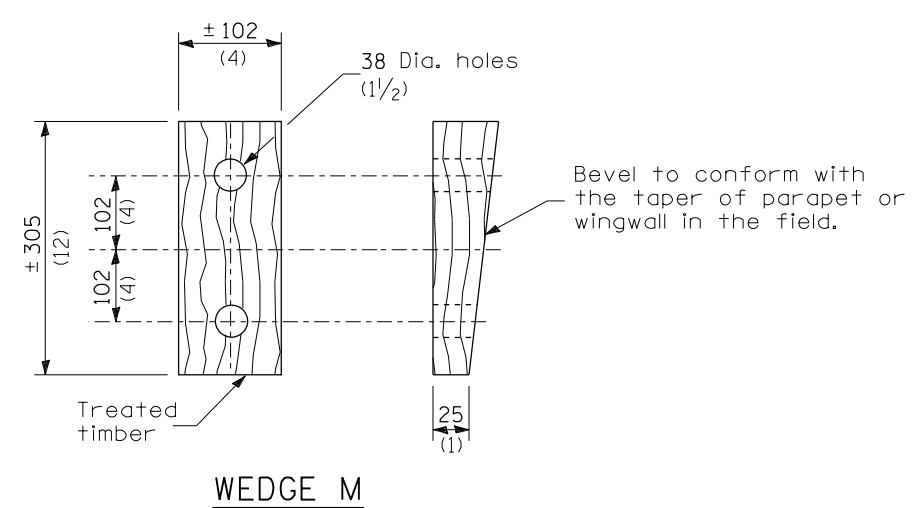
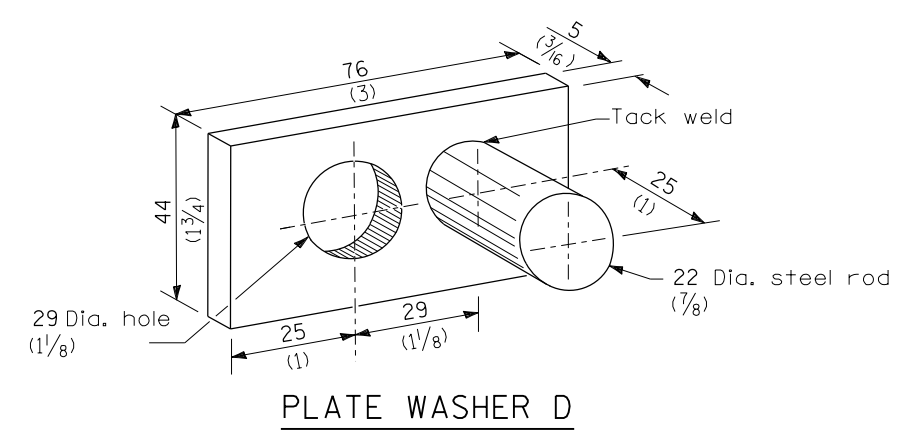


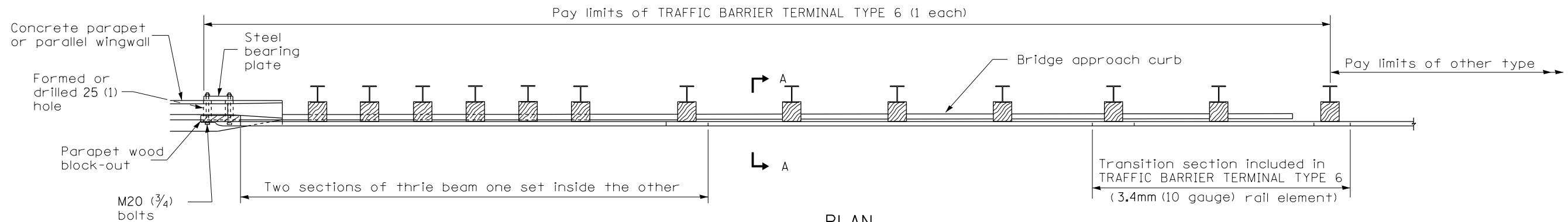
TYPE 5A - STEEL BRIDGE RAIL



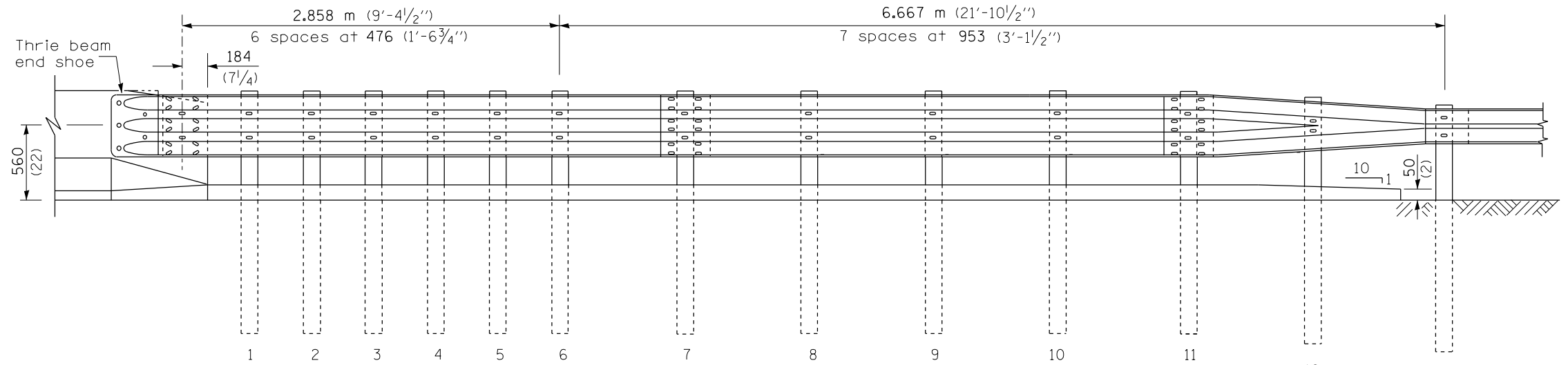
GENERAL NOTES

- Install plate washer D so that the 25 mm (1") projection fills the remainder of the slotted holes in the 25 mm (1") end plate on plate G after the M24 (1") dia. bolts are in place.
- * Bolts shall be provided with locknut or double nut and shall be tightened only to a point that will allow plate G to be free to move when an expansion joint exists below the connector.
- See Standard 630001 for details of guardrail not shown.
- All dimensions are in millimeters (inches) unless otherwise shown.

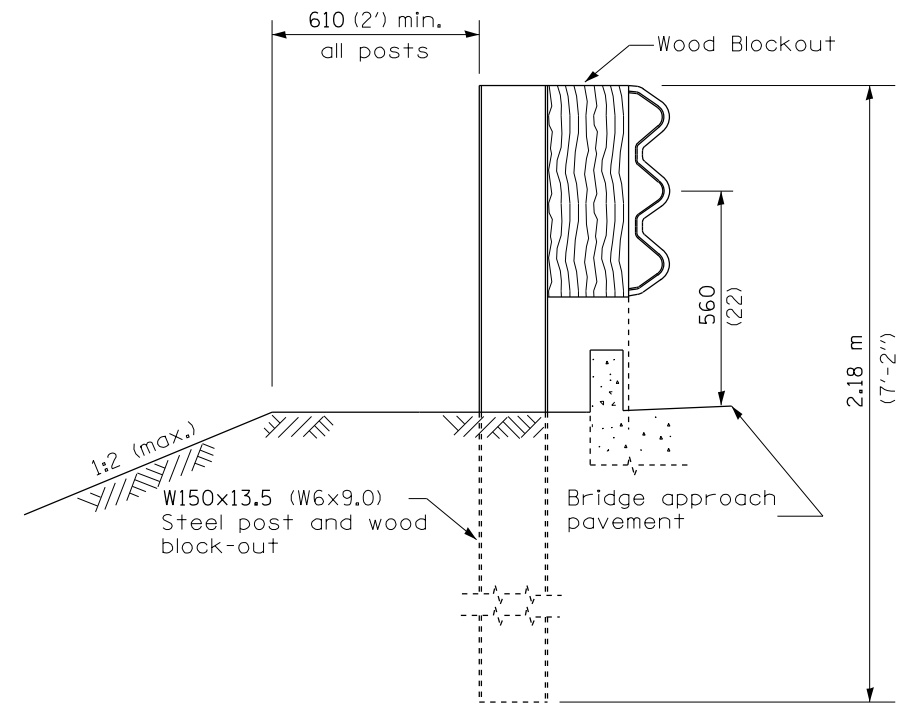




PLAN



ELEVATION



SECTION A-A

GENERAL NOTES

See Standard 630001 for details of guardrail not shown.

Thrie beam rail shall be bolted to block-out at all posts.

See Standard 420401 for details of bridge approach pavement.

All slope ratios are expressed as units of vertical displacement to units of horizontal displacement (V:H).

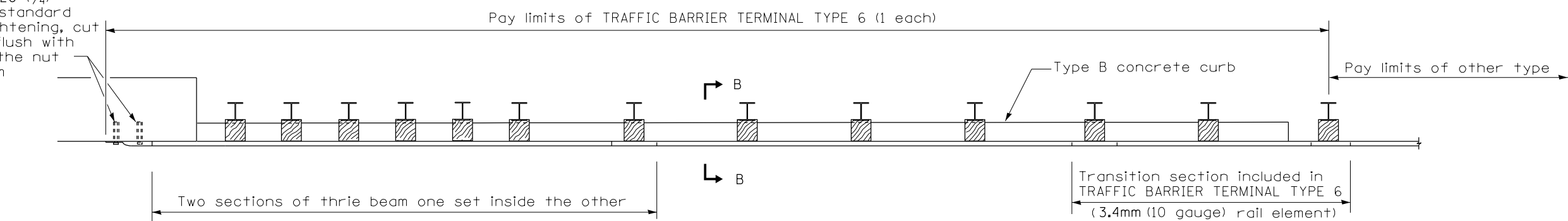
All dimensions are in millimeters (inches) unless otherwise shown.

FILE NAME =	USER NAME = sparksqw	DESIGNED -	REVISED -	STATE OF ILLINOIS DEPARTMENT OF TRANSPORTATION	PRE-MGS HIGHWAY STANDARD 631031-05 TRAFFIC BARRIER TERMINAL, TYPE 6 EFFECTIVE 4-1-06	F.A. RTE.	SECTION	COUNTY	TOTAL SHEETS	SHEET NO.
p:\IL\084EBIDINTEG\illinois.gov\PI\DOT\Documents\DOT Offices\District 6\Projects\D672486\Drawings\EA0\Drawings\631031-Term-T6.dgn	PLotted	CHECKED -	REVISED -			•VAR	•••	VARIOUS	17	14
Default	PLotted	DATE -	REVISED -			SCALE:	SHEET 1 OF 3 SHEETS	STA. TO STA.	ILLINOIS FED. AID PROJECT	

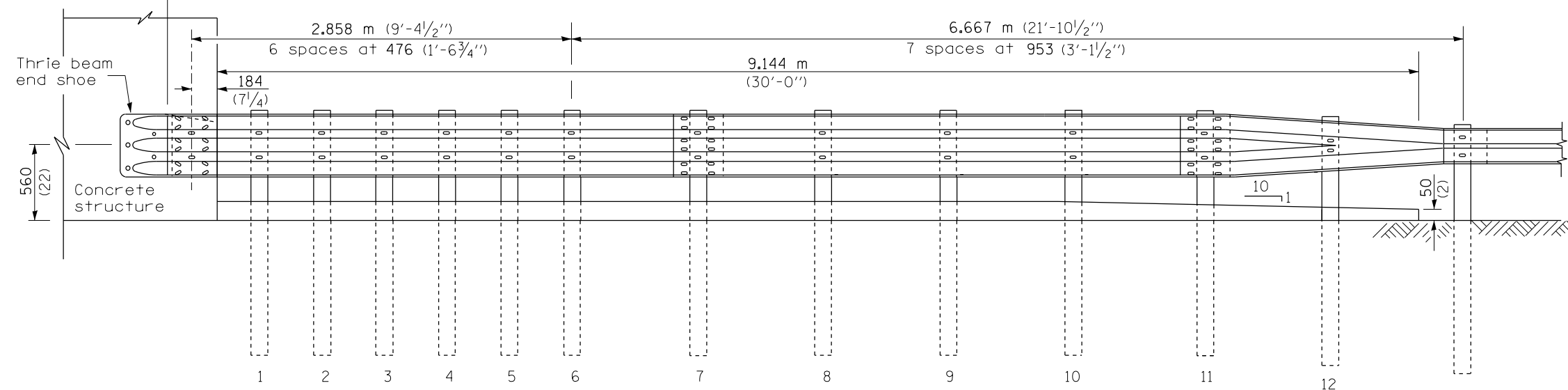
CONTRACT NO. 72H86

••• D6 CABLE/GUARDRAIL 2016

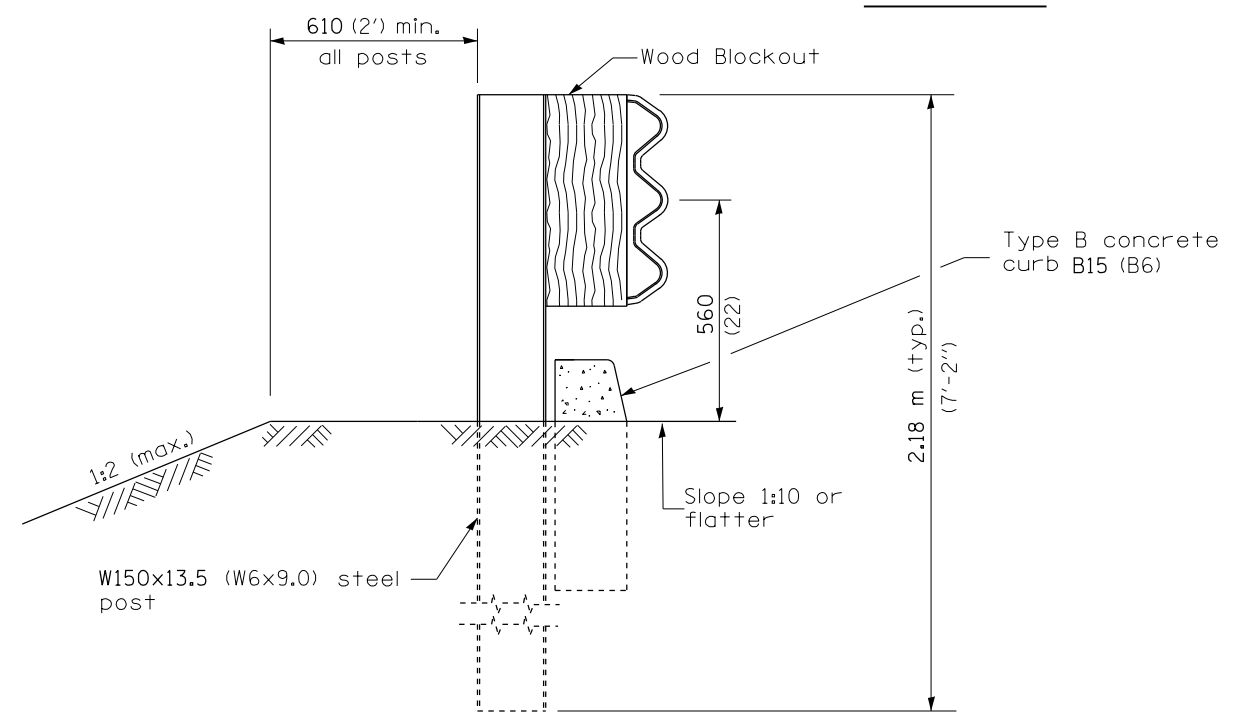
5 Epoxy grouted M20 (3/4") anchor bolts with standard washers. After tightening, cut the anchor bolts flush with nuts, and damage the nut to prevent it from loosening.



PLAN

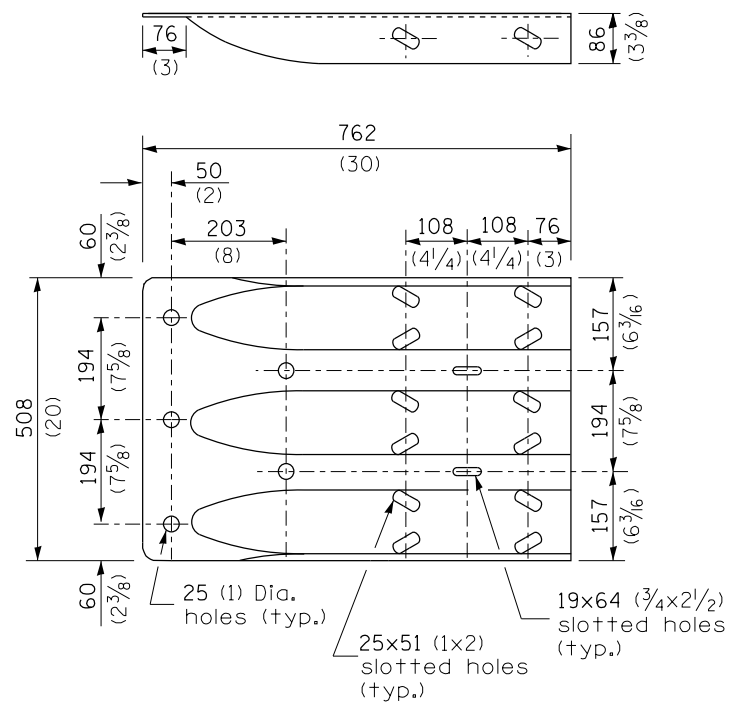


ELEVATION

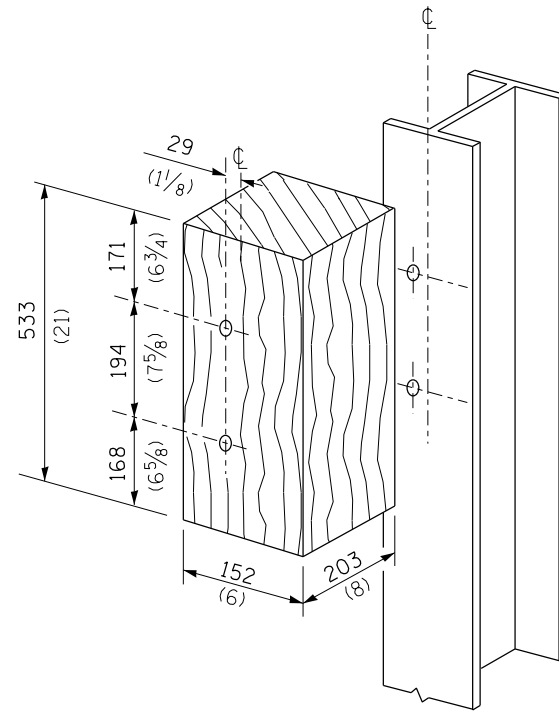


SECTION B-B

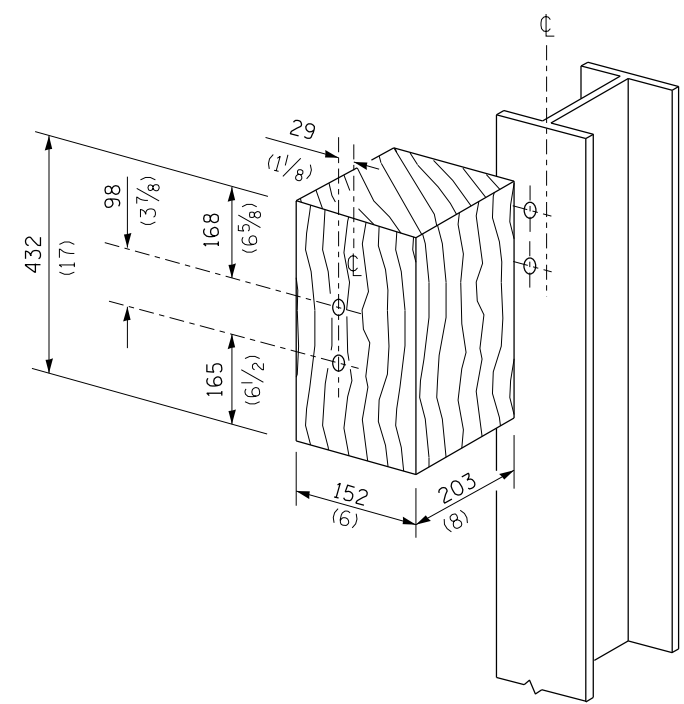
FILE NAME =	USER NAME = sparksqw	DESIGNED -	REVISED -	STATE OF ILLINOIS DEPARTMENT OF TRANSPORTATION	PRE-MGS HIGHWAY STANDARD 631031-05 TRAFFIC BARRIER TERMINAL, TYPE 6 EFFECTIVE 4-1-06	F.A. RTE.	SECTION	COUNTY	TOTAL SHEETS	SHEET NO.
pw:\IL\084EBIDINTEG.illinois.gov\PIWIDOT\Documents\IDOT Offices\District 6\Projects\0672\Drawings\631031-05\631031-05.dgn	PLT SCALE = 26.0000' / in.	CHECKED -	REVISED -			•VAR	•••	VARIOUS	17	15
Default	PLOT DATE = 7/7/2015	DATE -	REVISED -					CONTRACT NO. 72H86		ILLINOIS FED. AID PROJECT
						SCALE:	SHEET 2 OF 3 SHEETS	STA.	TO STA.	*** D6 CABLE/GUARDRAIL 2016



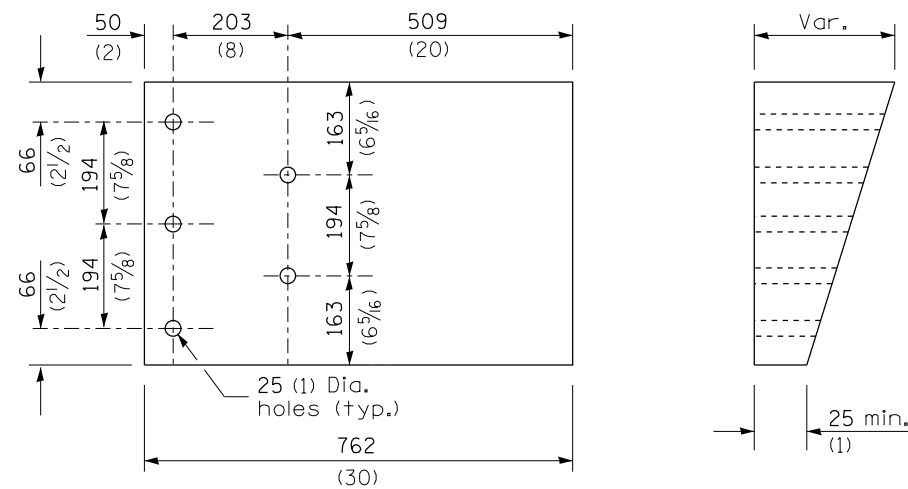
THRIE BEAM END SHOE DETAIL



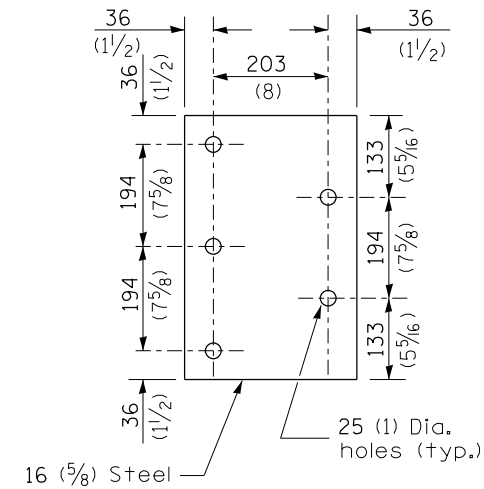
POSTS 1-11 WOOD BLOCKOUT DETAIL



POST 12 WOOD BLOCKOUT DETAIL



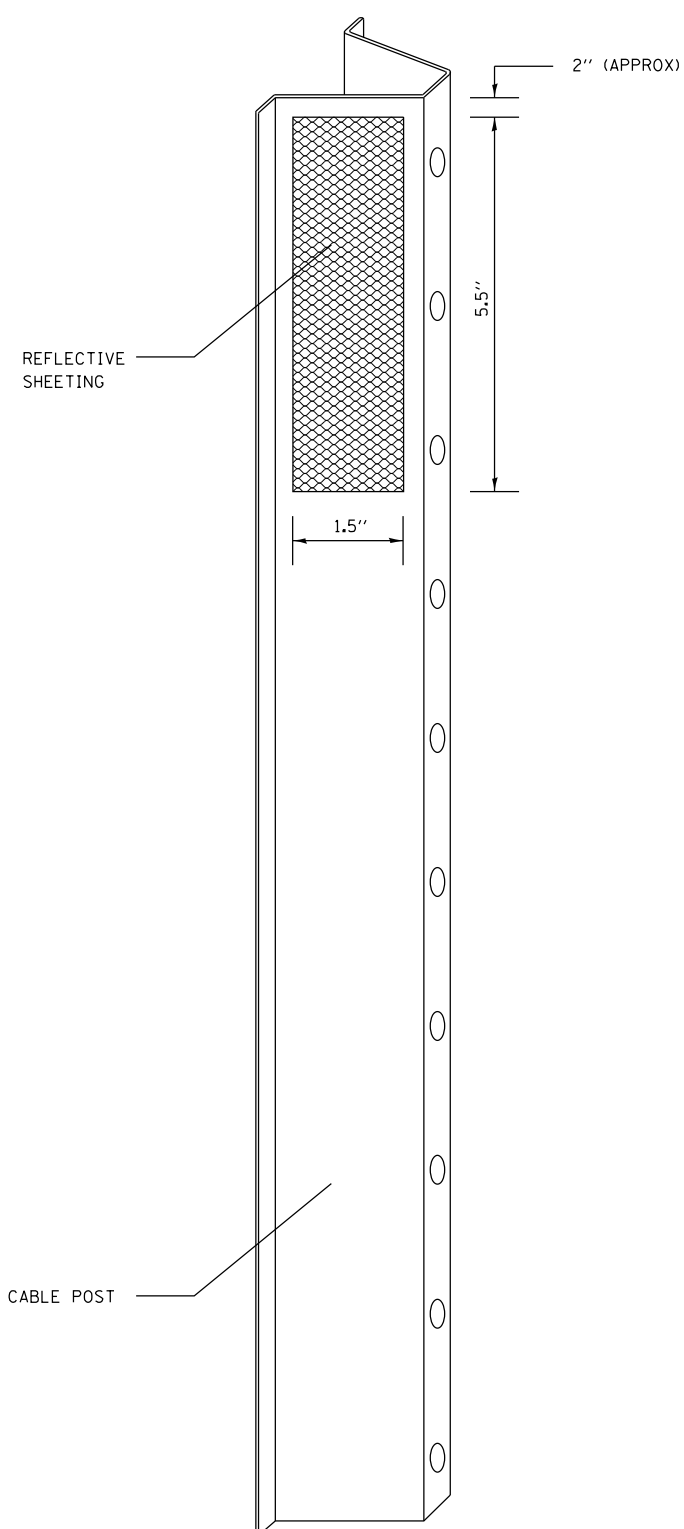
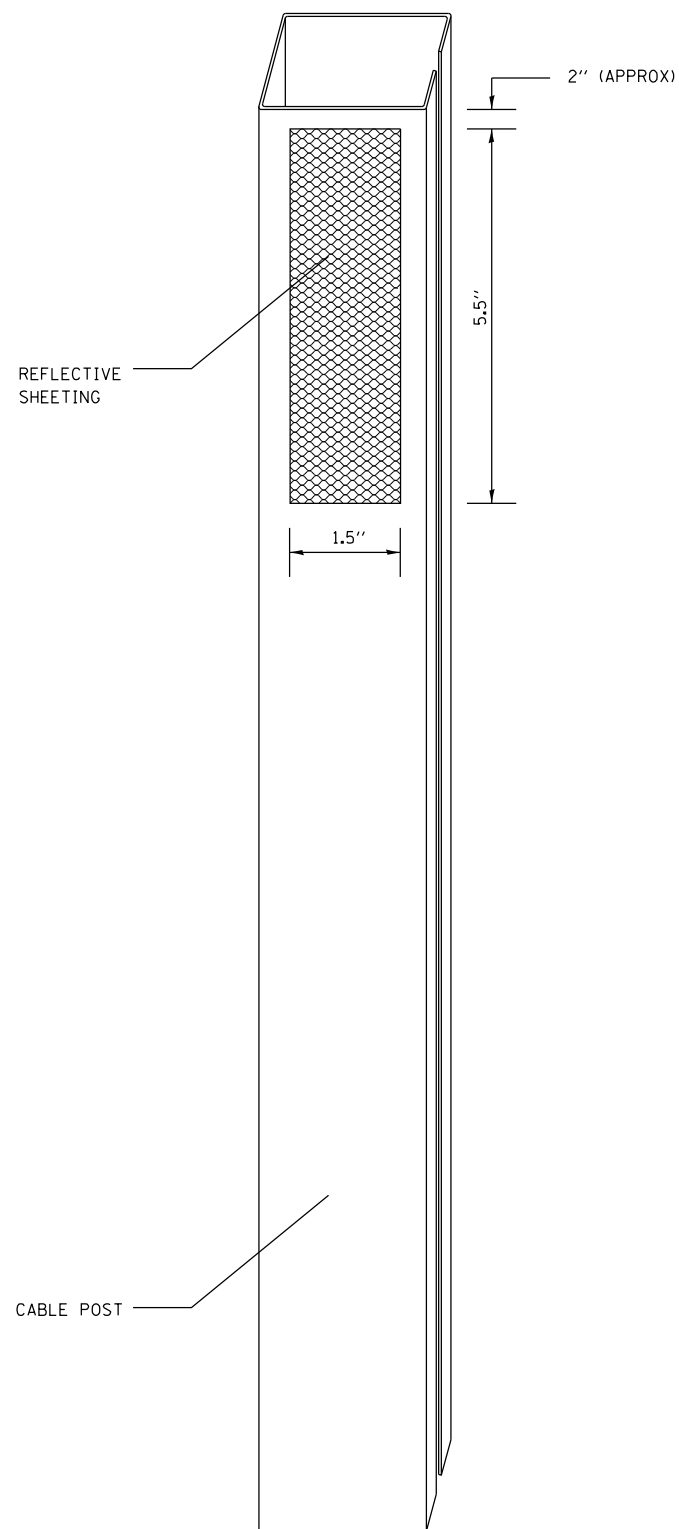
PARAPET WOOD BLOCK-OUT DETAIL



PARAPET STEEL BEARING PLATE DETAIL

(5 each individual 125x125x16 (5x5x5/8) steel plates with centered 25 (1) holes may be substituted for the plate shown.)

FILE NAME =	USER NAME = sparksgw	DESIGNED -	REVISED -	STATE OF ILLINOIS DEPARTMENT OF TRANSPORTATION	PRE-MGS HIGHWAY STANDARD 631031-05 TRAFFIC BARRIER TERMINAL, TYPE 6 EFFECTIVE 4-1-06	F.A. RTE.	SECTION	COUNTY	TOTAL SHEETS	SHEET NO.
Default		CHECKED -	REVISED -			VAR	***	VARIOUS	17	16
		DATE -	REVISED -			SCALE: SHEET 3 OF 3 SHEETS STA. TO STA.		CONTRACT NO. 72H86		



NOTES:

MATERIAL: THE MATERIAL SHALL BE IN ACCORDANCE WITH SECTION 1090 AND 1091 OF THE STANDARD SPECIFICATIONS.

CONSTRUCTION REQUIREMENTS: THE REFLECTIVE SHEETING SHALL BE INSTALLED DIRECTLY ON THE CABLE POSTS. THE REFLECTIVE SHEETING SHALL BE INSTALLED AS SHOWN IN THE PLANS, ON EVERY OTHER POST (IN ORDER TO PROVIDE A SPACING OF 40'). THE SURFACE OF THE POST SHALL BE CLEANED OF ALL CONTAMINANTS PRIOR TO THE INSTALLATION OF THE REFLECTIVE SHEETING. THE SURFACE SHALL BE CLEANED USING A 5-8 PERCENT PHOSPHORIC ACID SOLUTION AND RINSED WITH CLEAN WATER OR AS RECOMMENDED BY THE MANUFACTURER OF THE REFLECTIVE SHEETING AND AS APPROVED BY THE ENGINEER.

BASIS OF PAYMENT: THIS WORK WILL BE PAID FOR AT THE CONTRACT UNIT PRICE EACH FOR CABLE GUARD MARKER.

FILE NAME =	USER NAME = sparksgw	DESIGNED -	REVISED -
p:\11\084EBIDINTEG\Illinois.gov\PWIDOT\Documents\DOT Offices\District 6\Projects\0672\Drawings\EA0\Drawings\0672\0672-01-Cable Guard\0672-01-Cable Guard.dgn		DRAWN -	REVISED -
Default	PLOT SCALE = 100.0000' / 1in.	CHECKED -	REVISED -
	PLOT DATE = 7/7/2015	DATE -	REVISED -

**STATE OF ILLINOIS
DEPARTMENT OF TRANSPORTATION**

CABLE GUARD MARKER DETAIL

SCALE: SHEET 1 OF 1 SHEETS STA. TO STA.

F.A. RTE.	SECTION	COUNTY	TOTAL SHEETS	SHEET NO.
	***	VARIOUS	17	17
ILLINOIS FED. AID PROJECT			CONTRACT NO. 72H86	