

09-18-2015 LETTING ITEM 045

STATE OF ILLINOIS
DEPARTMENT OF TRANSPORTATION
DIVISION OF HIGHWAYS

PROPOSED HIGHWAY PLANS

FAI ROUTE 57 (I-57)
SECTION D9 PATCH AND BIT RES 2016-2

PATCH AND BIT RES
WILLIAMSON COUNTY

C-99-062-15

F.A.I. RTE.	SECTION	COUNTY	TOTAL SHEETS	SHEET NO.
57	D9 PATCH&BIT RES 2016-2	WILLIAMSON	5	1
ILLINOIS CONTRACT NO. 78494				

D-99-054-15



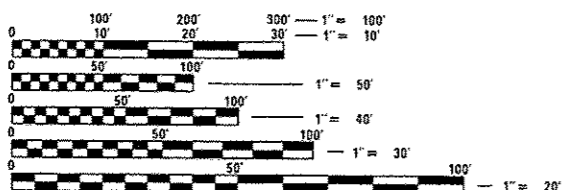
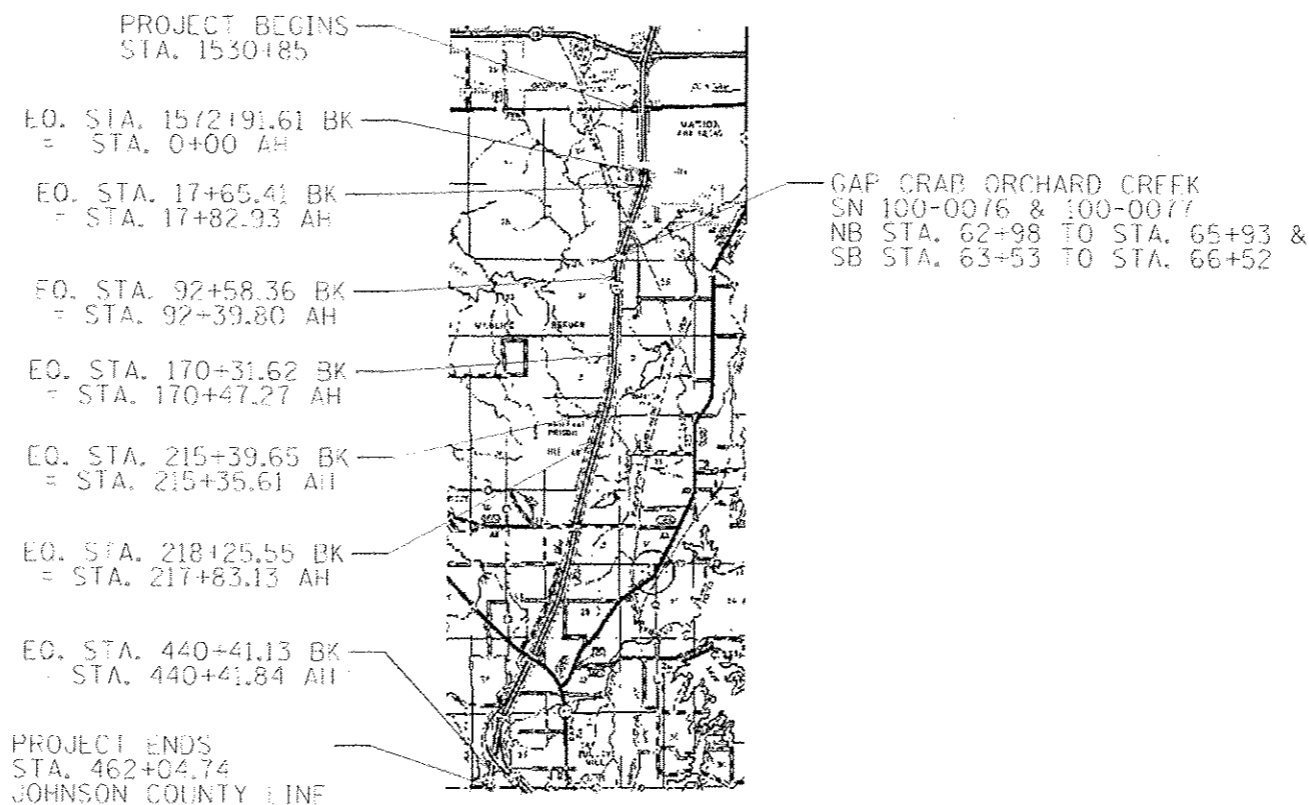
FOR INDEX OF SHEETS, SEE SHEET NO. 3

TRAFFIC DATA

I-57 TRAFFIC DATA
2012 ADT = 29,500 WITH 33% TRUCKS
2016 ADT = 31,930 WITH 33% TRUCKS
2036 ADT = 47,450 WITH 33% TRUCKS

TOWNSHIPS

MARTON



FULL SIZE PLANS HAVE BEEN PREPARED USING STANDARD ENGINEERING SCALES. REDUCED SIZED PLANS WILL NOT CONFORM TO STANDARD SCALES. IN MAKING MEASUREMENTS ON REDUCED PLANS, THE ABOVE SCALES MAY BE USED.

J.U.L.I.E.
JOINT UTILITY LOCATION INFORMATION FOR EXCAVATION
1-800-892-0123
OR 811

PROJECT ENGINEER: CHARLES STEIN
DESIGNER: BRANDY MAES
618-351-5210
CONTRACT NO. 78494

GROSS LENGTH = 50,442 FT. = 9.55 MILE
NET LENGTH = 50,147 FT. = 9.50 MILE

STATE OF ILLINOIS
DEPARTMENT OF TRANSPORTATION
DIVISION OF HIGHWAYS

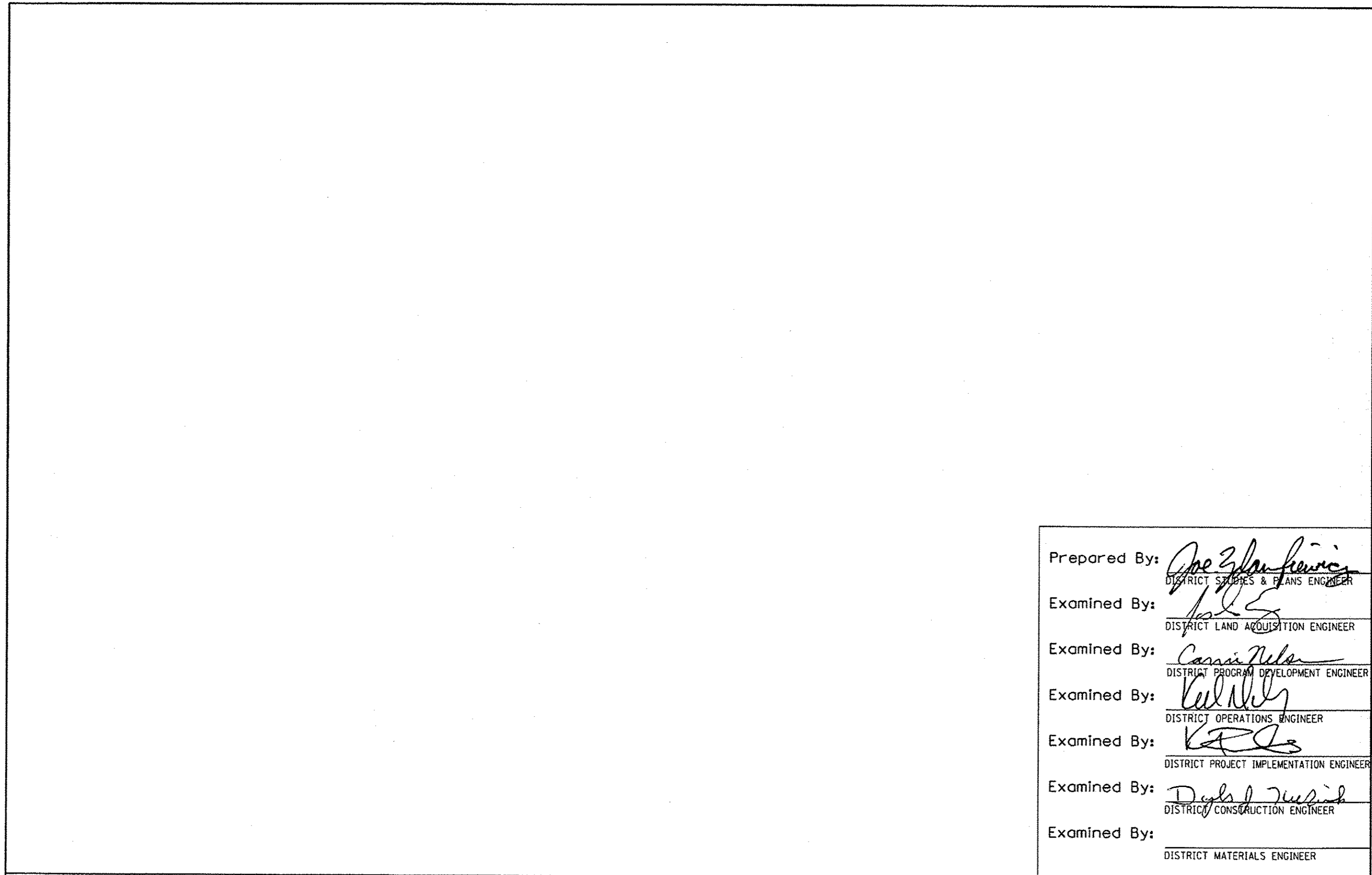
SUBMITTED July 8 20 15

Jeffrey J. Kern
DEPUTY DIRECTOR OF HIGHWAYS, REGION ENGINEER

Aug 14 20 15
John D. Baranzelli, P.E.
ENGINEER OF DESIGN AND ENVIRONMENT

Aug 14 20 15
Omair Osman, P.E.
DIRECTOR OF HIGHWAYS, CHIEF ENGINEER

PRINTED BY THE AUTHORITY
OF THE STATE OF ILLINOIS



Prepared By: *Joe Zlaniewicz*
 DISTRICT STUDIES & PLANS ENGINEER

Examined By: *[Signature]*
 DISTRICT LAND ACQUISITION ENGINEER

Examined By: *Carrin Nelson*
 DISTRICT PROGRAM DEVELOPMENT ENGINEER

Examined By: *Kevin Kelly*
 DISTRICT OPERATIONS ENGINEER

Examined By: *[Signature]*
 DISTRICT PROJECT IMPLEMENTATION ENGINEER

Examined By: *Daryl J. Tuckish*
 DISTRICT CONSTRUCTION ENGINEER

Examined By: _____
 DISTRICT MATERIALS ENGINEER

FILE NAME *	USER NAME * (name)	DESIGNED -	REVISED -
part\1684E810\ITEG\illinois.gov\WIDOT\Do	uments\DOT Offices\District 3\Projects\78494	ORANN\to\CP\sheta\78494\shite\civ.coo.	REVISED -
#MODEL\NME#	PLOT SCALE * 1/8" = 1' / in.	CHECKED -	REVISED -
	PLOT DATE * 6/20/2015	DATE -	REVISED -

**STATE OF ILLINOIS
 DEPARTMENT OF TRANSPORTATION**

SIGNATURE SHEET

SCALE: _____ SHEET _____ OF _____ SHEETS STA. _____ TO STA. _____

F.A.T. RTE.	SECTION	COUNTY	TOTAL SHEETS	SHEET NO.
57	09 PATCHARBIT RES 2016-2	WILLIAMSON	5	2
CONTRACT NO. 78494				
[ILLINOIS] FED. AID PROJECT				

INDEX OF SHEETS

SHEET NO.	DESCRIPTION
1	COVER SHEET
2	SIGNATURE SHEET
3	INDEX OF SHEETS, STANDARDS, GENERAL NOTES, COMMITMENTS AND MIX DESIGN
4	SUMMARY OF QUANTITIES
5	SCHEDULES

STANDARDS

- 000001-06
- 701400-08
- 701401-09
- 701411-09
- 701428
- 701901-04

COMMITMENTS

NONE

GENERAL NOTES

FACTORS USED FOR ESTIMATING PLAN QUANTITIES ARE AS FOLLOWS AND SHALL NOT BE USED FOR THE BASIS OF FINAL QUANTITIES:

ALL HOT-MIX ASPHALT CONCRETE
2.016 TONS/CU. YD.

EXISTING CONCRETE PATCHES ENCOUNTERED DURING MILLING OPERATIONS SHALL BE MILLED WITH THE SURROUNDING PARTIAL DEPTH REMOVAL. NO ADDITIONAL COMPENSATION WILL BE PROVIDED.

THE QUANTITY SHOWN IN THE PLANS FOR PARTIAL DEPTH HOT-MIX ASPHALT PATCHING, LONGITUDINAL JOINT REPAIR AND BITUMINOUS MATERIALS (PRIME COAT) ARE ESTIMATES. THE ACTUAL AMOUNT REQUIRED SHALL BE DETERMINED BY THE ENGINEER IN THE FIELD.

MIX DESIGN

LOCATION(S):	PARTIAL DEPTH HOT-MIX ASPHALT PATCHING, LONGITUDINAL JOINT REPAIR
MIXTURE USE(S):	POLYMERIZED HOT-MIX ASPHALT SURFACE COURSE, MIX E, N90
AC/PG	SBS PG 76-22
RAP% (MAX.):	SEE BDE SPECIAL PROVISION
DESIGN AIR VOIDS:	4.0%, 90 GYRATION DESIGN
MIXTURE COMPOSITION: (GRADATION MIXTURE)	IL-9.5 MM
FRICITION AGGREGATE:	E SURFACE
QUALITY MANAGEMENT:	QC/OA

FILE NAME *	USER NAME * maeb1	DESIGNED -	REVISED -	STATE OF ILLINOIS DEPARTMENT OF TRANSPORTATION	INDEX OF SHEETS, STANDARDS, GENERAL NOTES, COMMITMENTS, & MIX DESIGN	F.A.I. RTE.	SECTION	COUNTY	TOTAL SHEETS	SHEET NO.	
Default	Documents\DOT Office\District 9\Projects\78494\Drawings\CAD\Sheets\78494_001_Inde	CHECKED -	REVISED -			57	D9 PATCH&BIT RES 2016-2	WILLIAMSON	5	3	
PLOT SCALE * 94.4444 " / in.	DATE -	REVISIONS				SCALE: SHEET OF SHEETS STA. TO STA.		ILLINOIS FED. AID PROJECT CONTRACT NO. 78494			
PLOT DATE * 7/8/2015											

SUMMARY OF QUANTITIES

COUNTY:	Williamson
ROUTE:	I-57 (FAI 57)
FUNDING:	100% STATE
LOCATION:	RURAL
	ROADWAY
	0005

CODE NUMBER	ITEM DESCRIPTION	UNIT	
40600285	POLYMERIZED BITUMINOUS MATERIALS (PRIME COAT)	POUND	1,127
67100100	MOBILIZATION	L SUM	1
70100420	TRAFFIC CONTROL AND PROTECTION, STANDARD 701411	EACH	6
70100800	TRAFFIC CONTROL AND PROTECTION, STANDARD 701401	L SUM	1
70106800	CHANGEABLE MESSAGE SIGN	CAL MO	4
70200100	NIGHTTIME WORK ZONE LIGHTING	L SUM	1
X4406030	PARTIAL DEPTH REMOVAL, TYPE I, 3"	SQ YD	75
X4406230	PARTIAL DEPTH REMOVAL, TYPE II, 3"	SQ YD	308
X4406630	PARTIAL DEPTH REMOVAL, TYPE IV, 3"	SQ YD	600
X4421000	PARTIAL DEPTH PATCHING	TON	164
X7010410	SPEED DISPLAY TRAILER	CAL MO	4
Z0033650	LONGITUDINAL JOINT REPAIR	TON	50

PATCHING AND MIXTURE SCHEDULE

LOCATION	BITUMINOUS MATERIALS (PRIME COAT)	LONGITUDINAL JOINT REPAIR	PARTIAL DEPTH REMOVAL, TYPE I, 3"	PARTIAL DEPTH REMOVAL, TYPE II, 3"	PARTIAL DEPTH REMOVAL, TYPE IV, 3"	PARTIAL DEPTH PATCHING
	POUND	TON	SQ YD	SQ YD	SQ YD	TON
I-57 NORTH BOUND	515	25	27	141	0	28
I-57 SOUTH BOUND	612	25	48	167	600	136
TOTAL	1127	50	75	308	600	164