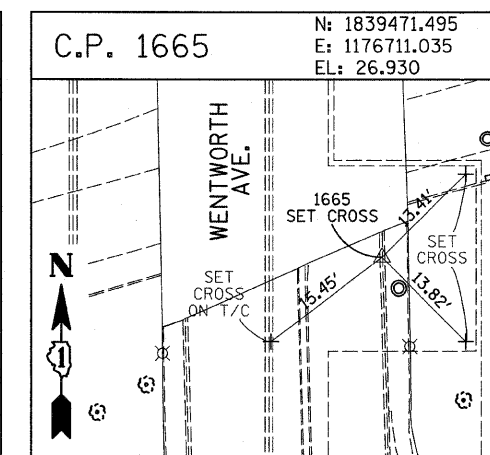
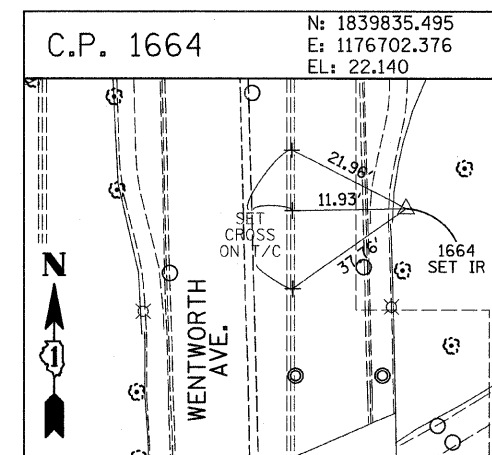
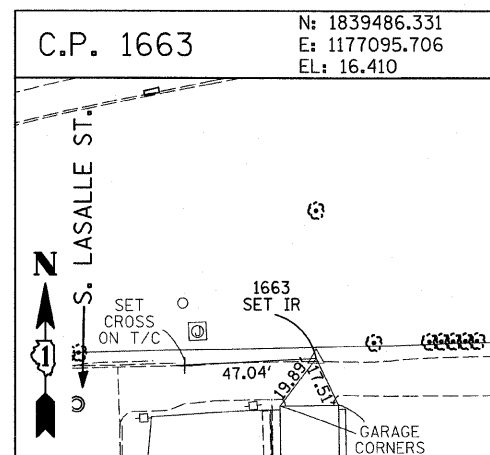
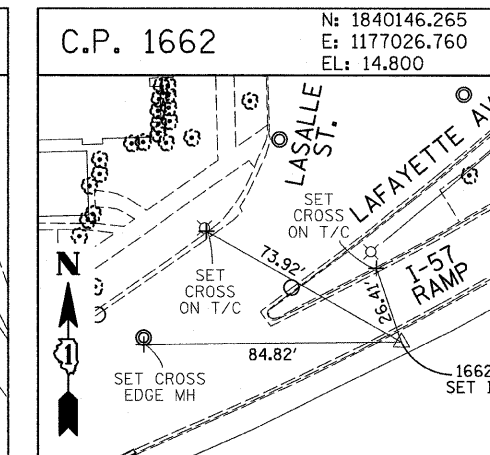
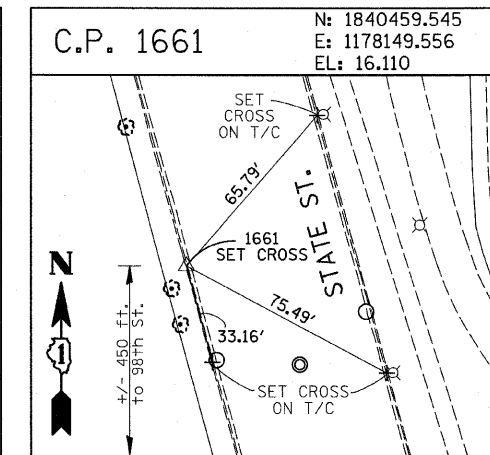
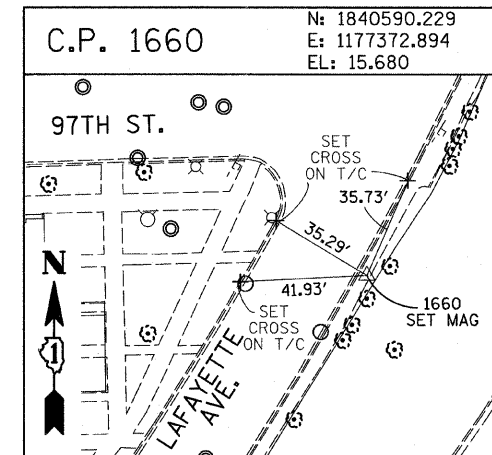
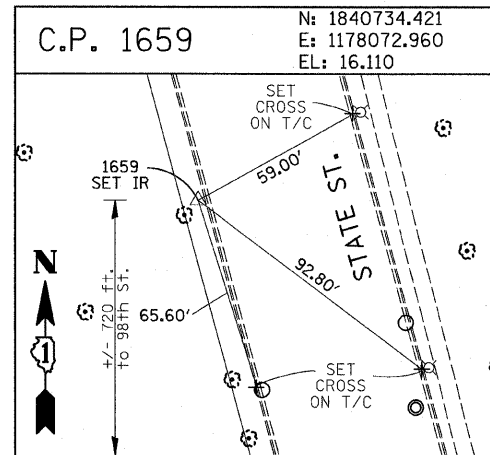
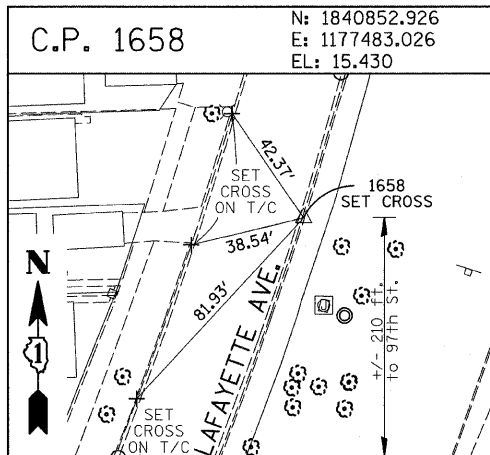
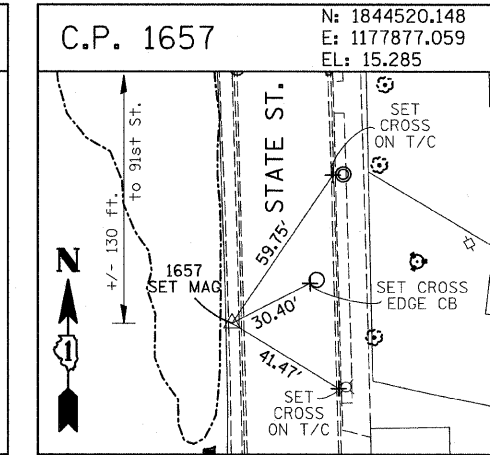
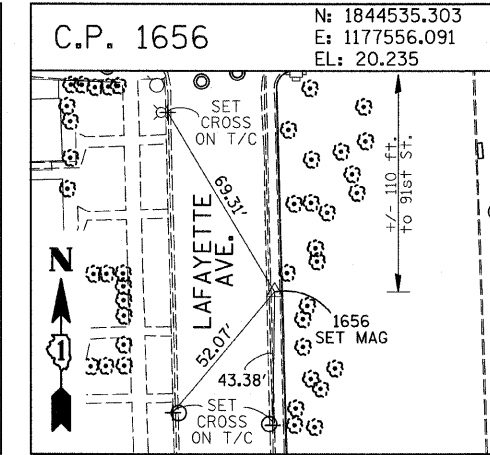
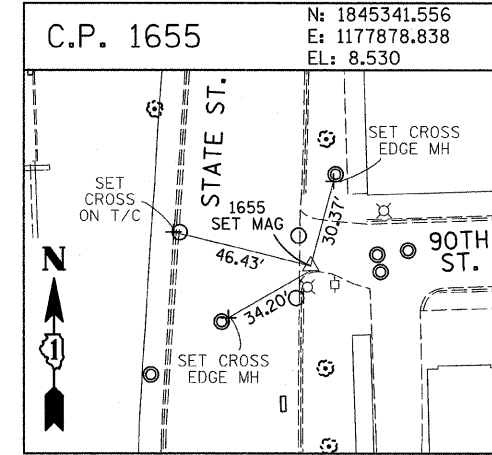
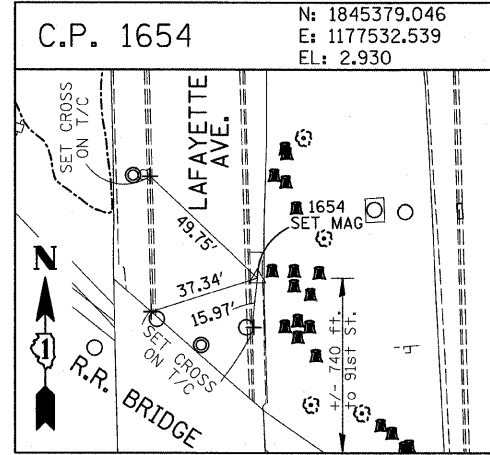
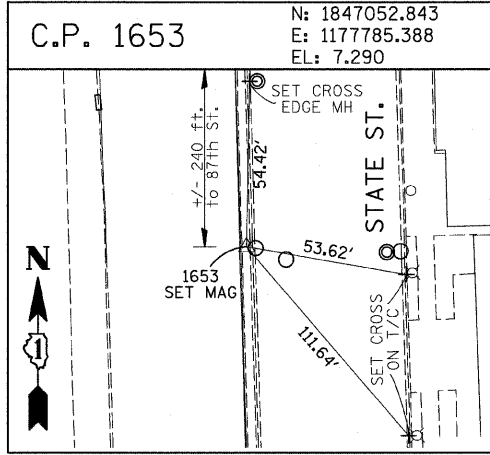
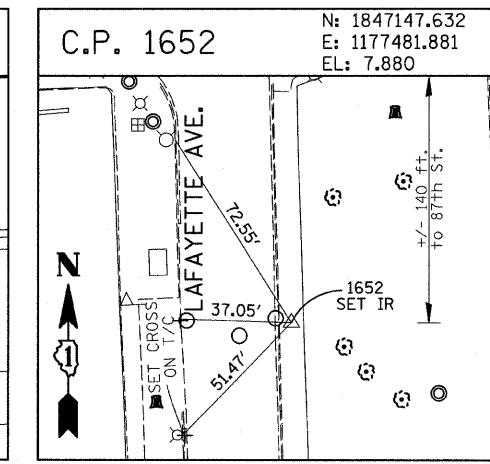
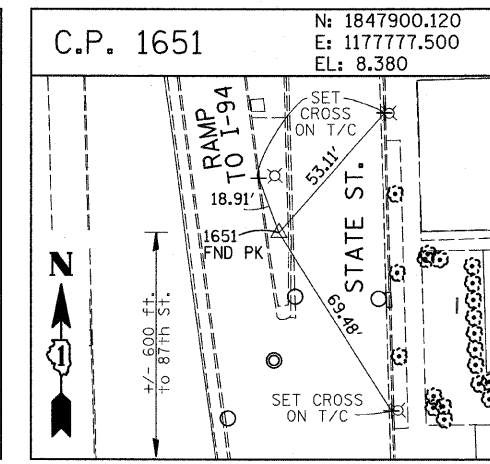
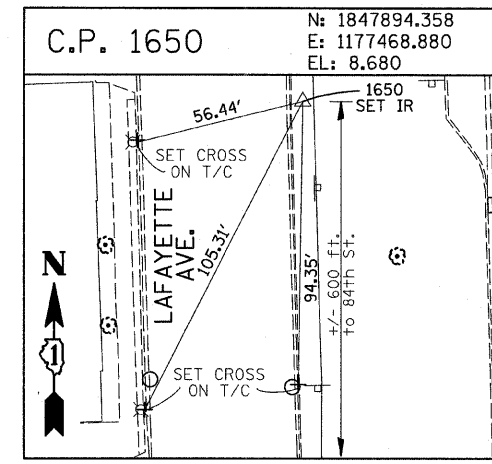
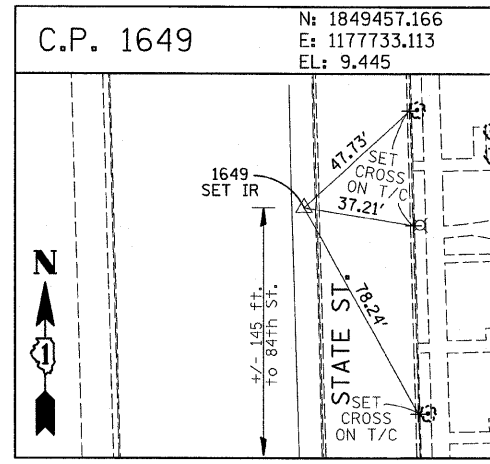
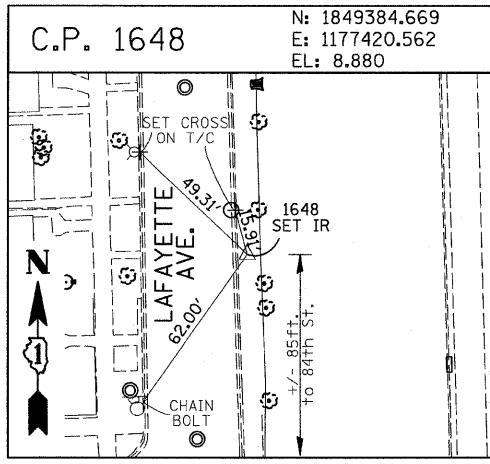


F.A.I. RTE.	SECTION	COUNTY	TOTAL SHEETS	SHEET NO.
94	2005-068 LS	COOK	58	15
STA. 153+09 (SB I-57)		TO STA. 121+95 (SB I-94)		
STA. 251+76 (NB I-57)		TO STA. 2213+00 (NB I-94)		
FED. ROAD DIST. NO.		ILLINOIS FED. AID PROJECT		

60A74



American Surveying Consultants, P.C.  
 SURVEYORS-ENGINEERS-GEODETISTS-MAPPING SCIENTISTS  
 1637 Flossmoor Rd., Suite 111, Chicago, IL 60643

REVISIONS	
NAME	DATE

ILLINOIS DEPARTMENT OF TRANSPORTATION  
 F.A.I. 94 (DAN RYAN EXPRESSWAY)  
 SURVEY TIES FOR CONTROL POINTS  
 SHEET 4 OF 7  
 SCALE: 1"=30'  
 DATE: JUNE 20, 2008  
 DRAWN BY: GSP  
 CHECKED BY: MMW

6/20/2008 10:25:28 AM