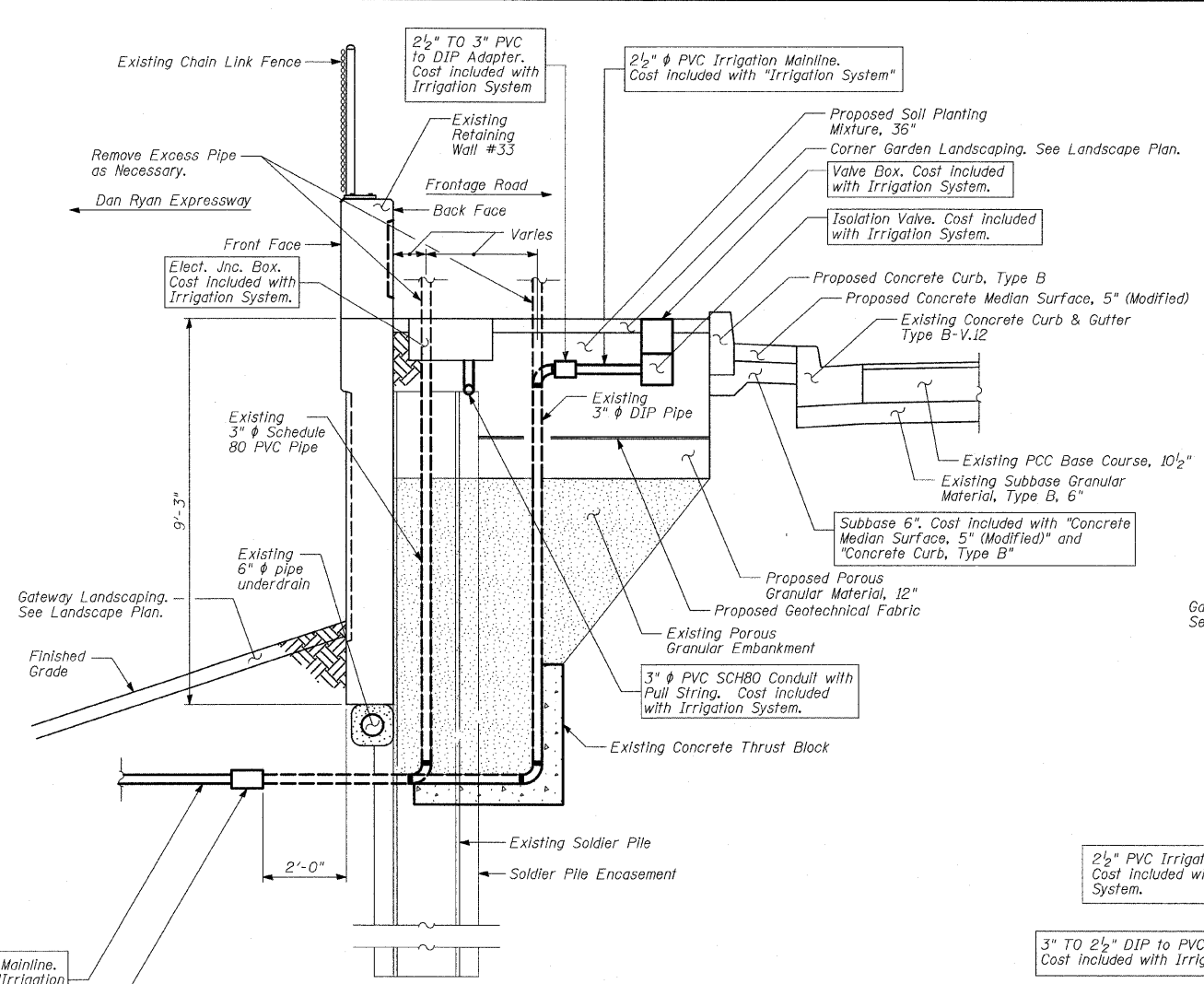
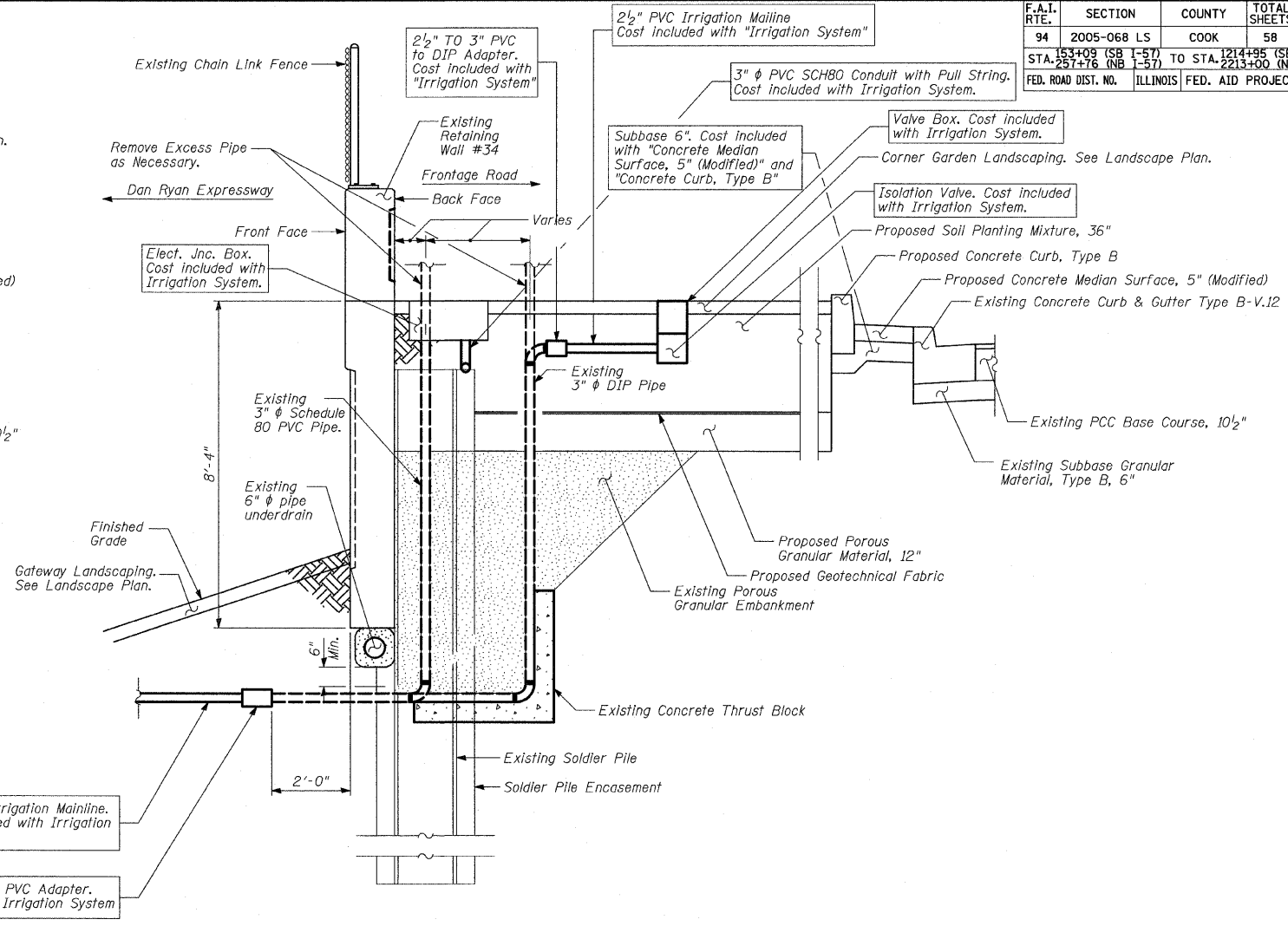


F.A.I. RTE.	SECTION	COUNTY	TOTAL SHEETS	SHEET NO.
94	2005-068 LS	COOK	58	45
STA. 153+08 (SB 1-57)	TO STA. 121+85 (SB 1-94)			
STA. 231+76 (NB 1-57)	TO STA. 221+00 (NB 1-94)			
FED. ROAD DIST. NO.	ILLINOIS	FED. AID PROJECT		

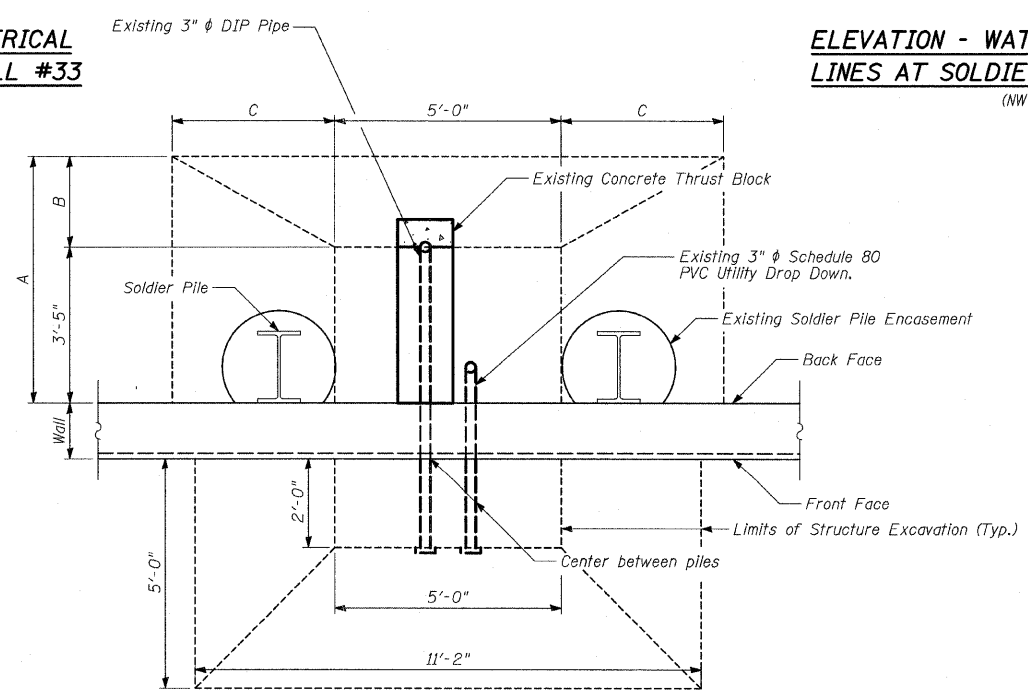
60A74



ELEVATION - WATER SERVICE & ELECTRICAL LINES AT SOLDIER PILE RETAINING WALL #33
(SW Corner Garden)



ELEVATION - WATER SERVICE & ELECTRICAL LINES AT SOLDIER PILE RETAINING WALL #34
(NW Corner Garden)



EXISTING PLAN - WATER SERVICE & ELECTRICAL LINES AT SOLDIER PILE RETAINING WALL
For Information Only

LEGEND

- Porous Granular Embankment
- Portland Cement Concrete

Wall	A	B	C
33	7'-10"	4'-5"	7'-8"
34	7'-9"	4'-3"	6'-9"

REVISIONS	
NAME	DATE

ILLINOIS DEPARTMENT OF TRANSPORTATION
F.A.I. 94 (DAN RYAN EXPRESSWAY)

GATEWAY AND CORNER GARDEN
UTILITY DROP DOWN DETAILS

SCALE: N.T.S. DRAWN BY: MAF
DATE: JUNE 20, 2008 CHECKED BY: DAK, TGB

TYLIN INTERNATIONAL

P:\02\31\road\626\ms2\cfr\sl0\3a.dgn 6/20/2008 10:27:26 AM