

**INDEX OF SHEETS**

FOR INDEX OF SHEETS, SEE SHEET NO. 2

PROJECT LOCATED IN THE CITY OF CHICAGO

DAN RYAN EXPRESSWAY:	ADT (2020)	DESIGN SPEED	POSTED SPEED
SB I-94 (DAN RYAN)	140,500	60 MPH	55 MPH
SB 87TH STREET EXIT RAMP	12,590	45 MPH	40 MPH
SB 87TH STREET ENTRANCE RAMP	13,350	45 MPH	40 MPH
NB I-94 (DAN RYAN)	151,800	60 MPH	55 MPH
NB 87TH STREET EXIT RAMP	11,600	45 MPH	40 MPH
NB 87TH STREET ENTRANCE RAMP	14,300	45 MPH	40 MPH

**DESCRIPTION OF PROJECT**

LANDSCAPING AND IRRIGATION OF GATEWAYS AND CORNER GARDENS; CONSTRUCTION OF CORNER GARDEN AND HMLT SERVICE PADS WITH MINI RETAINING WALLS LOCATED WITHIN THE PROJECT LIMITS.

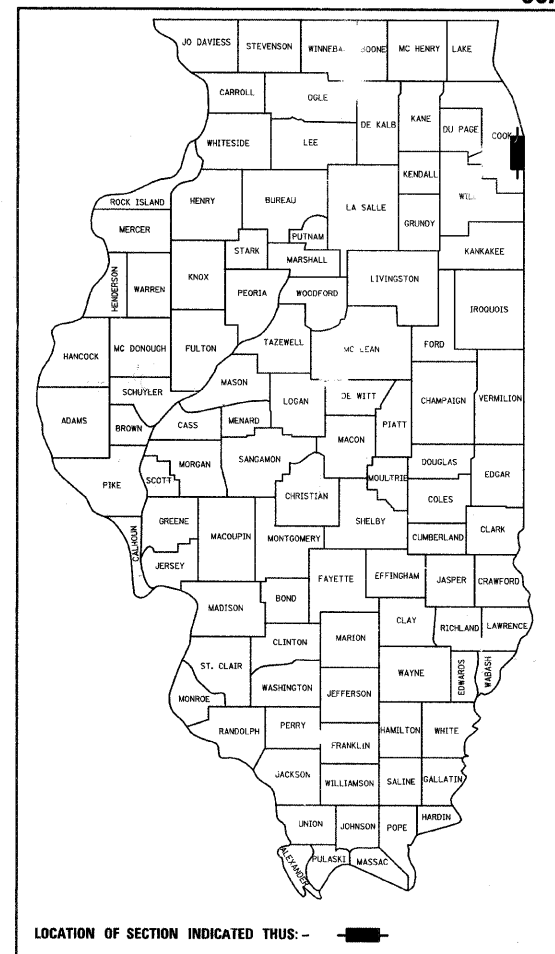
STATE OF ILLINOIS  
DEPARTMENT OF TRANSPORTATION  
DIVISION OF HIGHWAYS

**PROPOSED HIGHWAY PLANS**

F.A.I. ROUTE 94 (DAN RYAN EXPRESSWAY)  
SECTION 2005-069 LS  
GATEWAYS AND CORNER GARDENS  
NE, SE, NW & SW QUADRANTS AT 87TH STREET  
~~PROJECT~~

COOK COUNTY  
C-91-105-06  
R. 14 E.

F.A.I. RTE.	SECTION	COUNTY	TOTAL SHEETS	SHEET NO.
94	2005-069 LS	COOK	60	1
FED. ROAD DIST. NO.	ILLINOIS	FED. AID PROJECT		
D-91-105-06			60A75	



LOCATION OF SECTION INDICATED THUS: -

STATE OF ILLINOIS  
DEPARTMENT OF TRANSPORTATION  
DIVISION OF HIGHWAYS

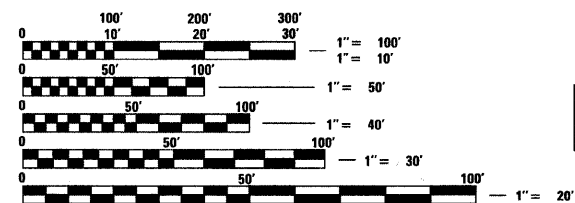
SUBMITTED JUNE 18, 2008

*Deann M. O'Keefe*  
DEPUTY DIRECTOR OF HIGHWAYS, REGION ENGINEER

August 15, 2008  
*Eric E. Haran*  
ENGINEER OF DESIGN AND ENVIRONMENT

August 15, 2008  
*Christine M. Reed*  
DIRECTOR OF HIGHWAYS, CHIEF ENGINEER

**CONTRACT 22D**

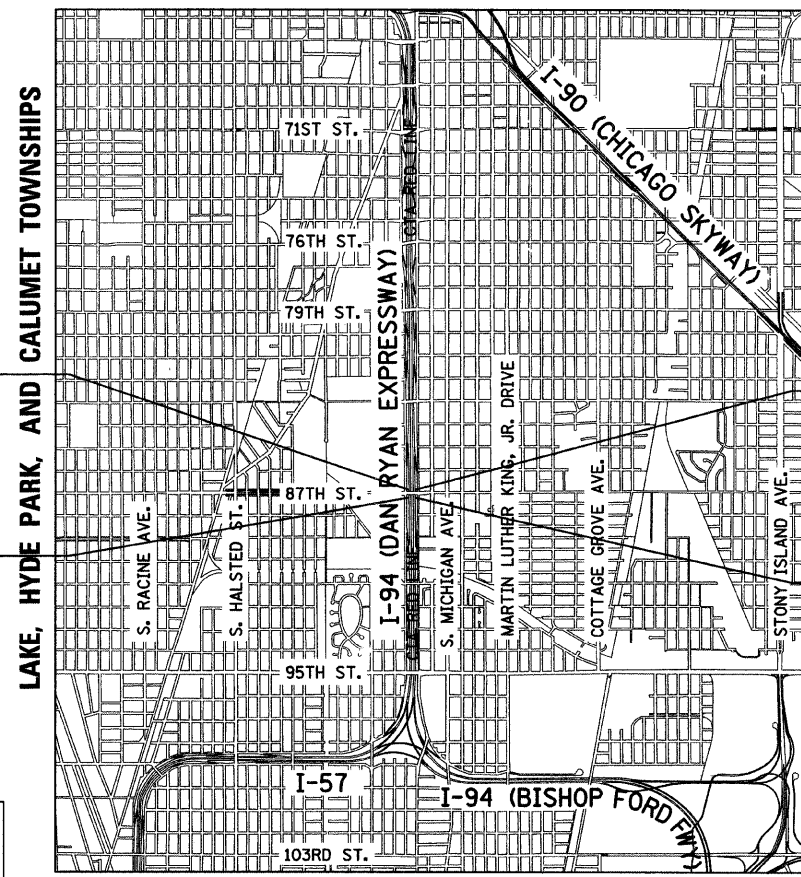


FULL SIZE PLANS HAVE BEEN PREPARED USING STANDARD ENGINEERING SCALES; REDUCED SIZED PLANS WILL NOT CONFORM TO STANDARD SCALES. IN MAKING MEASUREMENTS ON REDUCED PLANS, THE ABOVE SCALES MAY BE USED

DIGGER:  
CHICAGO UTILITY ALERT NETWORK  
(312) 744-7000

CTA CONTACT:  
DAVID HEARD  
MANAGER, CONSTRUCTION MANAGEMENT OVERSIGHT  
(312) 681-3862

**CONTRACT NO. 60A75**



LOCATION MAP

GROSS LENGTH OF PROJECT = 1,411.37 FT. = 0.27 MI.  
NET LENGTH OF PROJECT = 1,411.37 FT. = 0.27 MI.  
MAP SCALE: 1" = 1/2 MILE

DISTRICT ONE DESIGN / PROJECT MANAGER:  
BRIAN KUTTAB (847) 705 - 4431



Signed *Dean A. Kiesel*  
Dean A. Kiesel, P.E., Ill. Lic. No. 32957  
Expires 11-30-2009  
Date JUNE 16, 2008



Signed *Ernest C. Wong*  
Ernest C. Wong, P.E., Ill. Lic. No. 157-000818  
Expires 08-31-2008  
Date JUNE 13, 2008  
For Landscape Drawings 6, 7, 21, 23, 29-34, 40

**TYLIN INTERNATIONAL**  
PRINTED BY THE AUTHORITY OF THE STATE OF ILLINOIS