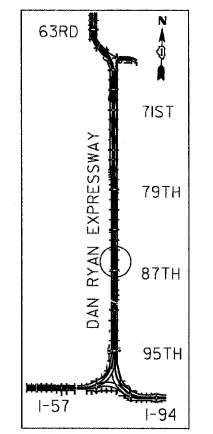
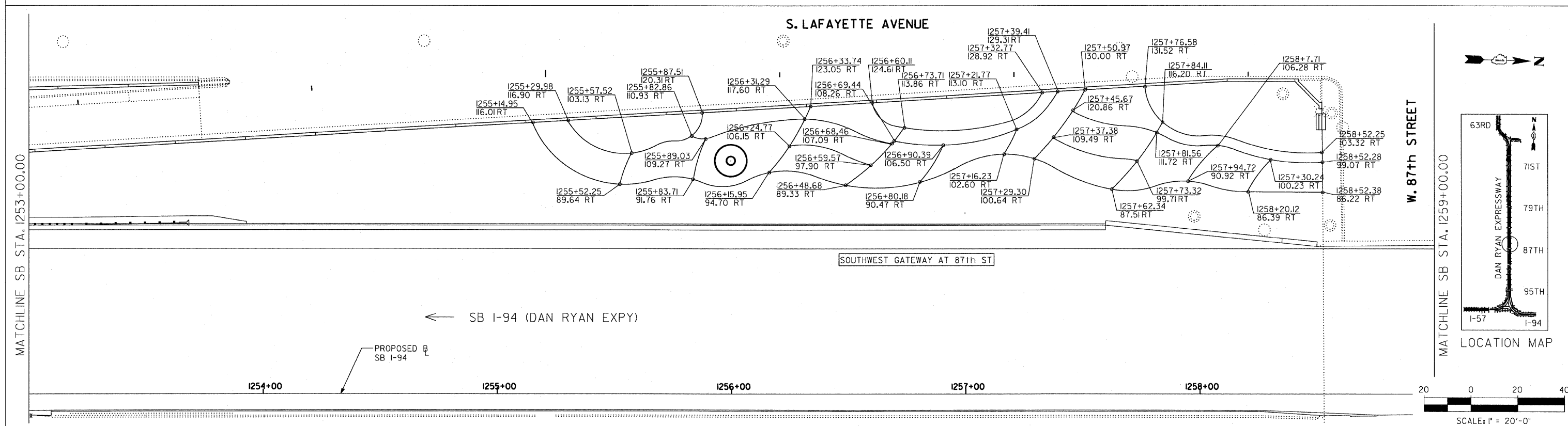
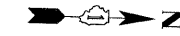
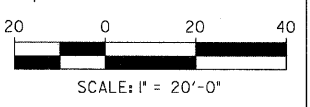


F.A.I. RTE.	SECTION	COUNTY	TOTAL SHEETS	SHEET NO.
94	2005-069 LS	COOK	60	29
STA. 1253+00		TO STA. 1259+00		
FED. ROAD DIST. NO.	ILLINOIS	FED. AID PROJECT		

60A75



LOCATION MAP



SITE DESIGN GROUP
TYLIN INTERNATIONAL

NOTE: THE LOCATION OF ALL PLANT MATERIAL SHALL BE STAKED BY THE CONTRACTOR FOR APPROVAL BY THE ENGINEER IN FIELD, PRIOR TO INSTALLATION. INDIVIDUAL TREES SHALL BE STAKED WITH IDENTITIES WRITTEN ON STAKES. SHRUB AND PERENNIAL BEDS SHALL BE OUTLINED WITH STAKES AND PAINTED LINES.

REVISIONS	
NAME	DATE

ILLINOIS DEPARTMENT OF TRANSPORTATION
F.A.I. 94 (DAN RYAN EXPRESSWAY)
87TH STREET GATEWAY LANDSCAPING AND IRRIGATION
PLANTING BED LAYOUT PLANS
SW QUADRANT AT 87TH ST. - SB I-94
SCALE: 1"=20'
DATE: June 20, 2008
DRAWN BY: EM
CHECKED BY: JO