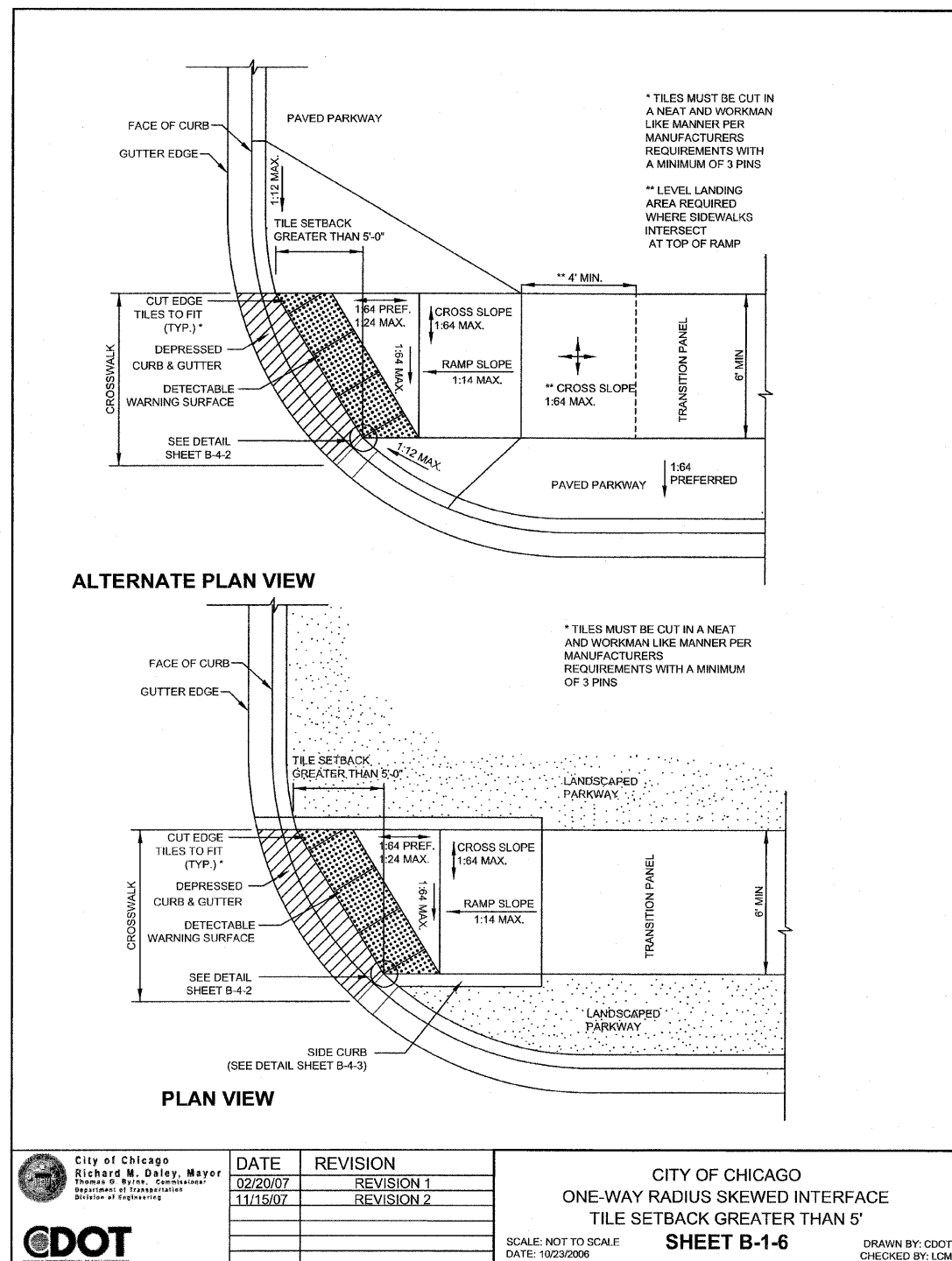


F.A.I. RTE.	SECTION	COUNTY	TOTAL SHEETS	SHEET NO.
94	2005-069 LS	COOK	60	51
STA. 2254+81 (NB I-94)			TO STA. 2263+45 (NB I-94)	
1255+15 (SB I-94)			1263+40 (SB I-94)	
FED. ROAD DIST. NO.	ILLINOIS FED. AID PROJECT			

60A75



GENERAL NOTES

1. THE DETECTABLE WARNING TILES SHALL BE CERAMIC CEMENT OR COMPOSITE POLYMER CONCRETE (CRC) TILES WHICH MEET THE CHICAGO DEPARTMENT OF TRANSPORTATION SPECIFICATION (AVAILABLE ON THE CITY OF CHICAGO WEBSITE). IN THE CENTRAL BUSINESS DISTRICT, GRANITE OR OTHER SPECIALTY PAVING MATERIALS MAY BE SUBMITTED TO THE COMMISSIONER FOR APPROVAL.
2. TILES MUST BE INSTALLED A MAXIMUM OF 8" OR LESS FROM FACE OF CURB (SEE DETAIL SHEET B-4-2).
3. TILES MUST COVER FULL WIDTH OF RAMP EXCLUDING SIDE FLARES. WHERE SIDEWALK OR RAMP IS FLUSH WITH STREET (DEPRESSED CURB), TILES MUST BE PROVIDED.
4. WHERE APPLICABLE, A COMBINATION OF DIFFERING SIZE TILES MAY BE USED ON COMPOUND AND LARGE RADII. CONTRACTOR MUST MAKE THIS DETERMINATION AND VERIFY IN FIELD.
5. TILES MUST CONTRAST WITH ADJACENT PAVEMENT. IF LIGHT COLORED PAVEMENT IS USED THE TILE COLOR SHALL BE RED. IF A DARK COLORED PAVEMENT IS USED THE TILE COLOR SHALL BE YELLOW. CONTRACTOR TO VERIFY THAT PROPER CONTRAST IS OBTAINED.
6. RAMP WIDTH MUST BE A MINIMUM OF 6'-0" AND IN INCREMENTS OF 1'-0", EXCEPT WHEN USING THE PERPENDICULAR RAMP AT CORNER, WHICH HAS A MINIMUM WIDTH OF 4'-0".
7. PRIOR TO PLACING CONCRETE FOR DEPRESSED CURBS AND RAMPS THE CONTRACTOR SHALL NOTIFY THE COMMISSIONER TO RECEIVE LAYOUT APPROVAL. A PRE-MANUFACTURED TILE, APPROVED BY THE COMMISSIONER, MUST BE USED TO ACHIEVE THE DETECTABLE WARNING SURFACE.
8. THE MAXIMUM ALLOWABLE RAMP RUNNING SLOPE IS 1:14. MEASURED AT ANY PORTION OF THE RAMP. IF POSSIBLE, A MORE GRADUAL SLOPE SHALL BE USED. GRADE BREAKS AT THE TOP AND BOTTOM OF RAMPS SHALL BE PERPENDICULAR TO THE DIRECTION OF RAMP RUN.
9. THE MAXIMUM ALLOWABLE RAMP CROSS SLOPE IS 1:64. MEASURED AT ANY PORTION OF THE RAMP. IF POSSIBLE, A MORE GRADUAL SLOPE SHALL BE USED.
10. UTILITIES, SUCH AS LIGHT POLES, TRAFFIC POLES AND HYDRANTS, MAY BE LOCATED IN THE FLARE OF THE RAMP BUT ARE NOT ALLOWED ON THE RAMP SURFACE OR LANDING AREAS.
11. ALTERATIONS SHALL NOT DECREASE THE ACCESSIBILITY OF EXISTING FACILITIES
12. THE MINIMUM CROSSWALK WIDTH IS 6'-0". CROSSWALKS SHALL BE LOCATED AS SHOWN IN THE PLAN SHEETS DEPENDING ON THE TYPE OF CURB RAMP USED. BEYOND THE CURB FACE AT THE BASE OF CURB RAMPS, A CLEAR SPACE OF 4'-0" BY 4'-0" MINIMUM SHALL BE PROVIDED WITHIN THE WIDTH OF THE CROSSWALK.
13. IF SIDEWALK AND ALLEY ARE AT THE SAME GRADE, A RAMP IS NOT REQUIRED. IF SIDEWALK AND DRIVEWAY ARE AT THE SAME GRADE, A RAMP IS NOT REQUIRED BUT DETECTABLE WARNING TILES ARE STILL REQUIRED IF THE DRIVEWAY HAS TRAFFIC CONTROL DEVICES (I.E. TRAFFIC SIGNALS).
14. MAIN LINE SIDEWALK SHALL HAVE A MAXIMUM CROSS SLOPE NOT TO EXCEED 1:64 FOR THE FULL WIDTH OF WALK UNLESS OTHERWISE APPROVED BY THE COMMISSIONER.
15. MAIN LINE SIDEWALK RUNNING SLOPES SHALL NOT EXCEED 1:24 OR THE GENERAL GRADE ESTABLISHED FOR THE ADJACENT STREET, WHICH EVER IS HIGHER.
16. CURB RAMPS AND KEYSTONE TO BE CONSTRUCTED WITH 8" THICK CONCRETE AT ALL TRAFFIC SIGNALIZED INTERSECTIONS AND INDUSTRIAL STREET INTERSECTIONS. AT ALL OTHER LOCATIONS, 5" THICK CONCRETE TO BE USED
17. NO DEVIATIONS FROM THESE STANDARDS ARE ALLOWED WITHOUT WRITTEN APPROVAL FROM THE COMMISSIONER.
18. ALL CONSTRUCTION DOCUMENTS MUST BE STAMPED BY A LICENSED ARCHITECT/LANDSCAPE ARCHITECT/ENGINEER TO CERTIFY THAT THEY ARE IN ACCORDANCE WITH THE AMERICANS WITH DISABILITIES ACT (ADA) AND ALL CODES AND BUILDING ORDINANCES OF THE CITY OF CHICAGO AND STATE OF ILLINOIS.

City of Chicago Richard M. Daley, Mayor Thomas G. Byrne, Commissioner Department of Transportation Division of Engineering	DATE	REVISION	CITY OF CHICAGO GENERAL NOTES SHEET B-3-2 SCALE: NOT TO SCALE DATE: 10/23/2006 DRAWN BY: CDOT CHECKED BY: LCM
	02/20/07	REVISION 1	
	11/15/07	REVISION 2	

REVISIONS	
NAME	DATE

ILLINOIS DEPARTMENT OF TRANSPORTATION
 F.A.I. 94 (DAN RYAN EXPRESSWAY)
 CITY OF CHICAGO STANDARD DETAILS
 DETAILS OF CURB RAMPS FOR
 PEOPLE WITH DISABILITIES
 SHEET 1 OF 3
 SCALE: NONE
 DATE: JUNE 20, 2008
 DRAWN BY: CDOT
 CHECKED BY: