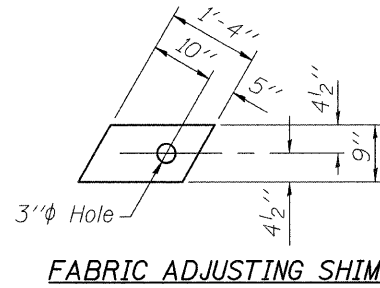
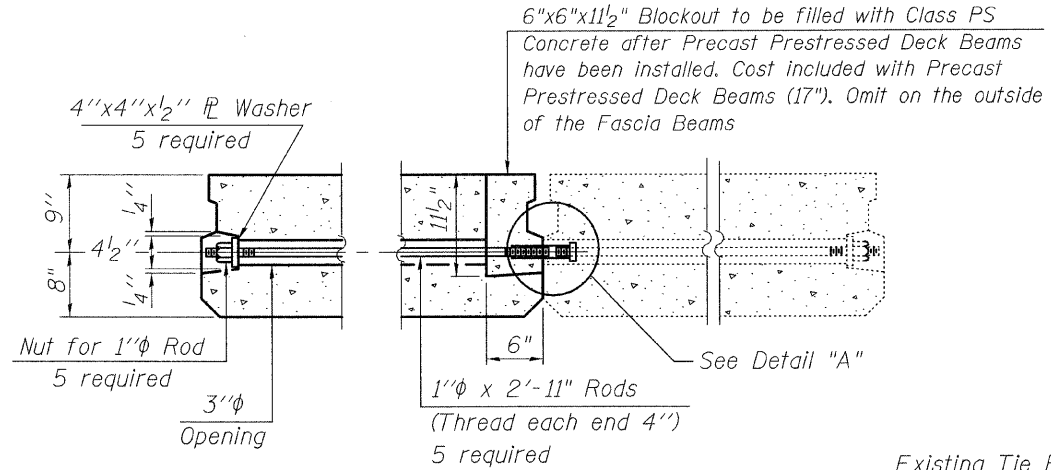


FABRIC BEARING PAD

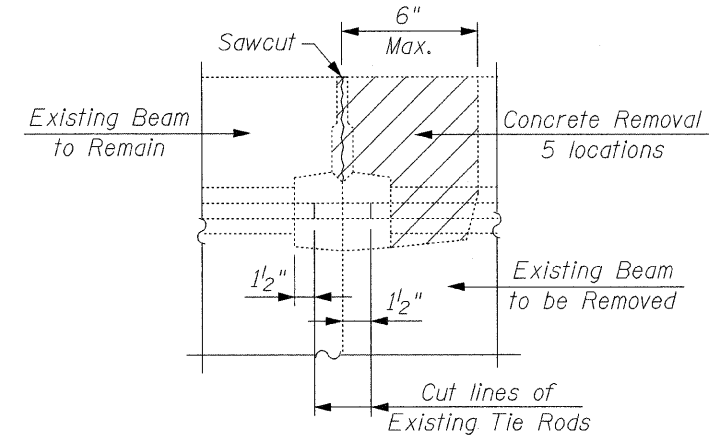
FIXED



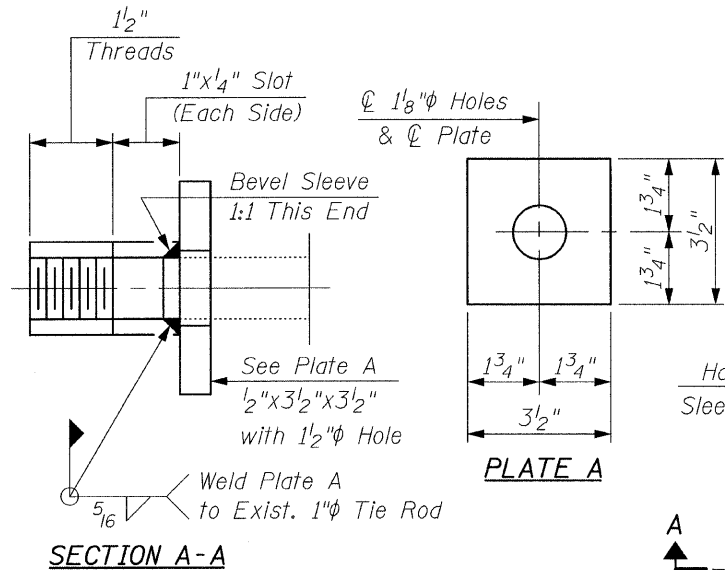
FABRIC ADJUSTING SHIM



TYPICAL TRANSVERSE TIE ASSEMBLY



BEAM REMOVAL DETAIL AT TRANSVERSE TIES



SECTION A-A

MODIFIED TIE COUPLER FOR TRANSVERSE TIE ASSEMBLY

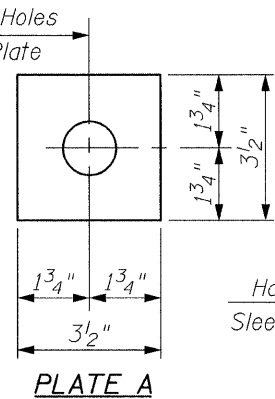
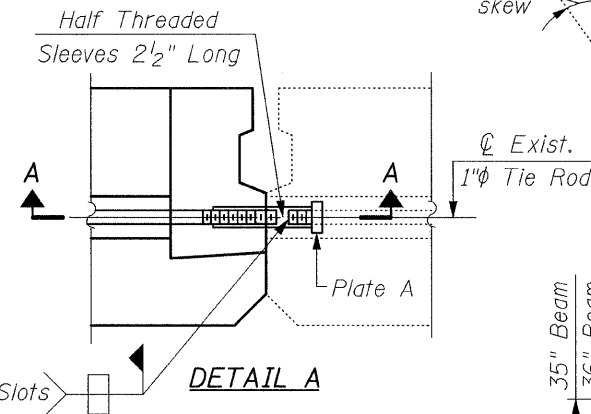
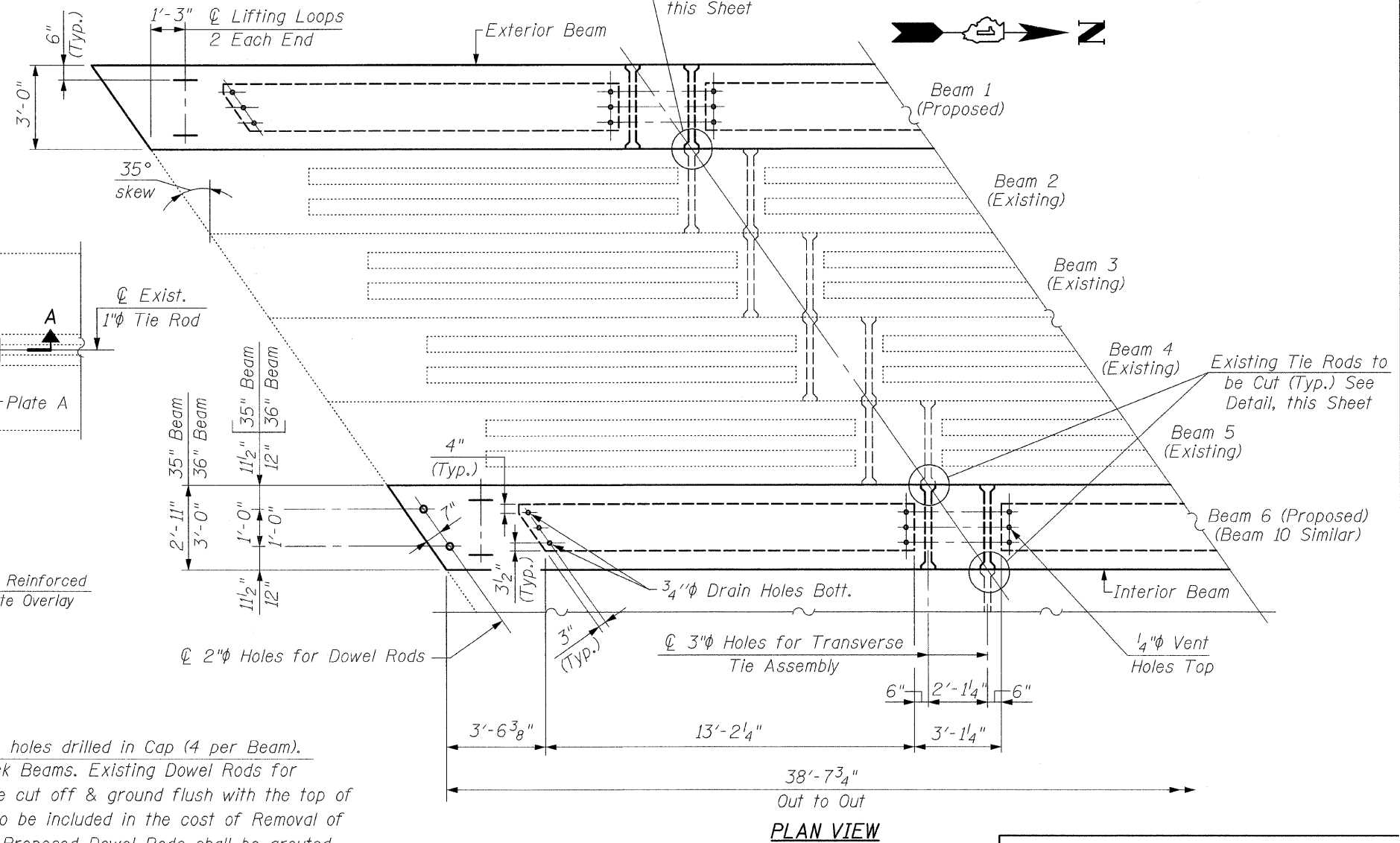


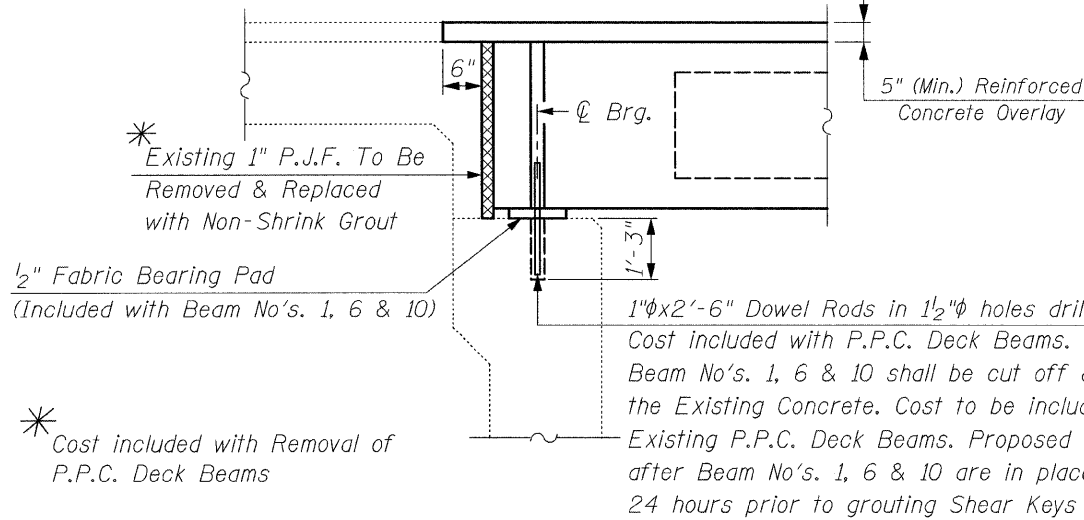
PLATE A



DETAIL A



PLAN VIEW



SECTION AT ABUTMENTS

FILE NAME = deck.beam.detail-11.sht	USER NAME = IDOT	DESIGNED - B.N.S.	REVISED -
		DRAWN - D.L./R.E.S./F.M.	REVISED -
	PLOT SCALE = 50.0000' / 1" IN.	CHECKED - B.N.S. / J.C.N.	REVISED -
	PLOT DATE = 7/7/2008	DATE - JULY 7, 2008	REVISED -

**STATE OF ILLINOIS
DEPARTMENT OF TRANSPORTATION**

**P.P.C. DECK BEAM DETAILS-II
U.S. 45 / 52 OVER SMALL STREAM
S.N. 099-0122**

SCALE: SHEET NO. 58 OF 511 SHEETS STA. TO STA.

F.A.P. RTE. 330	SECTION 17 B-1-1-1	COUNTY WILL	TOTAL SHEETS 29	SHEET NO. 20
CONTRACT NO. 60D68				
FED. ROAD DIST. NO. ILLINOIS FED. AID PROJECT				



CHRISTIAN-ROGE & ASSOCIATES, INC.
ENGINEERS / PLANNERS / SURVEYORS
211 W. WACKER DRIVE CHICAGO, IL. 60606
PHONE: (312)372-2023 FAX: (312)372-5274

* Cost included with Removal of P.P.C. Deck Beams

1" x 2'-6" Dowel Rods in 1 1/2" holes drilled in Cap (4 per Beam). Cost included with P.P.C. Deck Beams. Existing Dowel Rods for Beam No's. 1, 6 & 10 shall be cut off & ground flush with the top of the Existing Concrete. Cost to be included in the cost of Removal of Existing P.P.C. Deck Beams. Proposed Dowel Rods shall be grouted after Beam No's. 1, 6 & 10 are in place and allowed to cure a min. of 24 hours prior to grouting Shear Keys