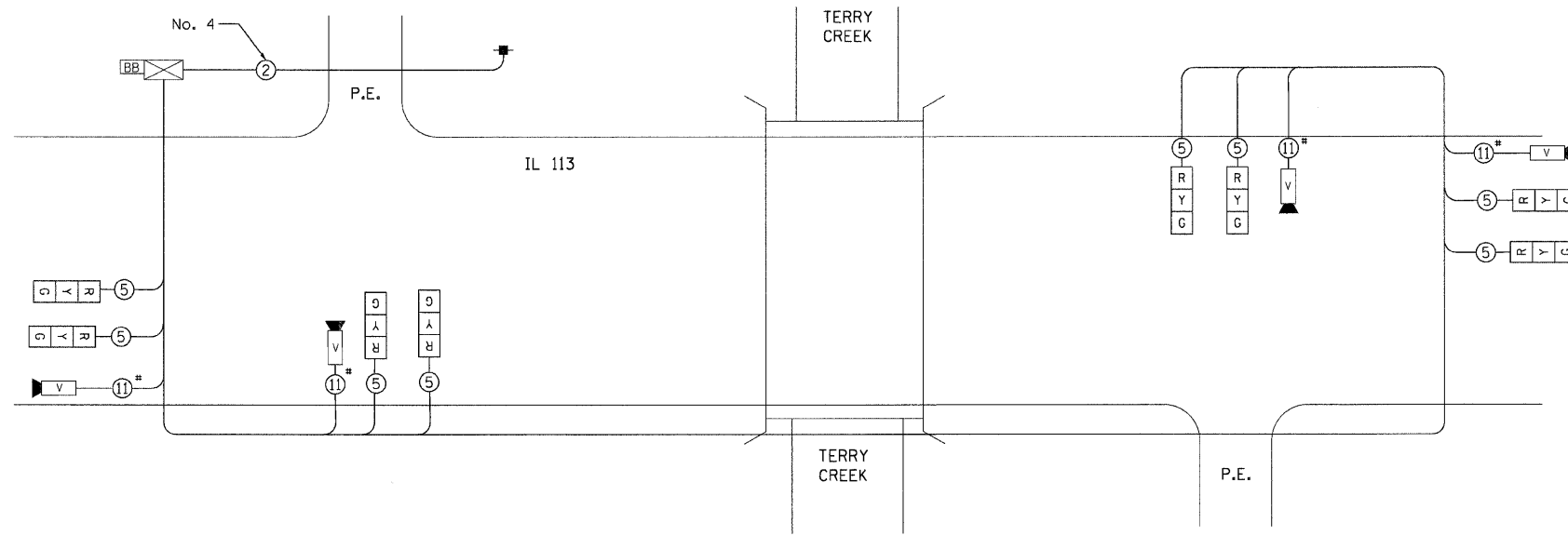


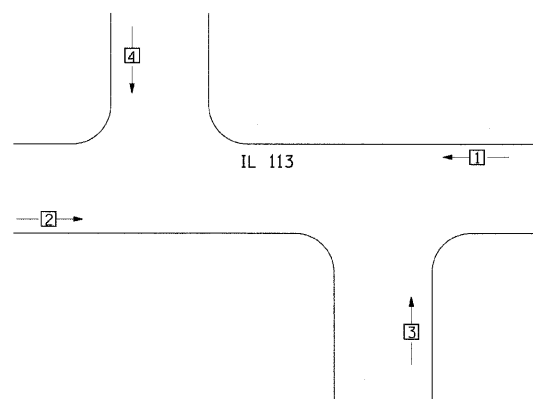
NOTES FOR TEMPORARY TRAFFIC SIGNALS

1. ALL CONTROL EQUIPMENT INCLUDING EMERGENCY PRE-EMPTION AND COMMUNICATION DEVICES FOR THE TEMPORARY TRAFFIC SIGNAL(S) SHALL BE FURNISHED BY THE CONTRACTOR, EVP WILL BE PAID FOR SEPARATELY.
2. ONLY CONTROLLERS SUPPLIED BY ONE OF THE DISTRICT APPROVED CLOSED LOOP EQUIPMENT MANUFACTURERS WILL BE APPROVED FOR USE AT TEMPORARY SIGNAL LOCATIONS. ALL CONTROLLERS USED FOR TEMPORARY TRAFFIC SIGNALS SHALL BE FULLY ACTUATED NEMA MICROPROCESSOR BASED WITH RS232 DATA ENTRY PORTS COMPATIBLE WITH EXISTING MONITORING SOFTWARE APPROVED BY IDOT DISTRICT 1, INSTALLED IN A NEMA TS1 OR TS2 CABINET, ONLY ONE BRAND OF CONTROLLER WILL BE ACCEPTED FOR ANY ONE CONTRACT. A REPRESENTATIVE OF THE TRAFFIC SIGNAL CONTROLLER/CABINET VENDOR/SUPPLIER MUST BE PRESENT AT THE TRAFFIC SIGNAL TURN ON.
3. ALL TRAFFIC SIGNAL SECTIONS AND PEDESTRIAN SIGNAL SECTIONS SHALL BE 12" (300mm), HEADS SHALL BE PLACED AS INDICATED ON THE TEMPORARY TRAFFIC SIGNAL PLAN OR AS DIRECTED BY THE ENGINEER. THE CONTRACTOR SHALL FURNISH ENOUGH CABLE SLACK TO RELOCATED HEADS TO ANY POSITION ON THE SPAN WIRE OR AT LOCATIONS ILLUSTRATED ON THE PLANS FOR CONSTRUCTION STAGING. THE TEMPORARY TRAFFIC SIGNAL SHALL REMAIN IN OPERATION DURING ALL SIGNAL HEAD RELOCATIONS, EACH TEMPORARY TRAFFIC SIGNAL HEAD SHALL HAVE ITS OWN CABLE FROM THE CONTROLLER CABINET TO THE SIGNAL HEAD.
4. ALL EXISTING STREET NAME AND INTERSECTION REGULATORY SIGNS SHALL BE REMOVED FROM EXISTING POLES, RELOCATED AND SECURELY FASTENED TO THE SIGNAL SPAN WIRE OR WOOD POLE AS DIRECTED BY THE ENGINEER.
5. ANY TEMPORARY SIGNAL WITHIN AN EXISTING CLOSED LOOP TRAFFIC SIGNAL SYSTEM SHALL BE INTERCONNECTED TO THAT SYSTEM USING SIMILAR BRAND CONTROL EQUIPMENT.
6. THE TEMPORARY TRAFFIC SIGNAL SHALL HAVE THE SIGNAL HEAD DISPLAYS, SIGNAL HEAD PLACEMENTS AND CONTROLLER PHASING MATCH THE EXISTING TRAFFIC SIGNAL AT THE TIME OF THE TURN ON, IF NO TRAFFIC STAGING IS IN PLACE OR WILL NOT BE STAGED ON THE DAY OF THE TURN ON.
7. 24" WHITE STOP BAR TO BE INSTALLED AFTER THE INSTALLATION AND IMPLEMENTATION OF THE TEMPORARY TRAFFIC SIGNALS.
8. THE VIDEO CAMERA VENDOR/SUPPLIER REPRESENTATIVE WILL ASSIST THE CONTRACTOR IN THE EQUIPMENT SETUP/PLACEMENT OF CAMERAS AND WILL BE PRESENT AT THE TRAFFIC SIGNAL TURN ON.



NOTE: OR AS SPECIFIED BY CAMERA VENDOR

CONTROLLER SEQUENCE



PHASE DESIGNATION

- LEGEND**
- ◻ SINGLE ENTRY PHASE
 - ◊ OVERLAP
 - PEDESTRIAN PHASE
 - NUMBER REFERS TO ASSOCIATED PHASE

SUMMARY OF QUANTITIES			
ITEM	DESCRIPTION	UNIT	QUANTITY
X8900005	TEMPORARY BRIDGE TRAFFIC SIGNAL INSTALLATION	EACH	1

TEMPORARY CABLE DIAGRAM LEGEND

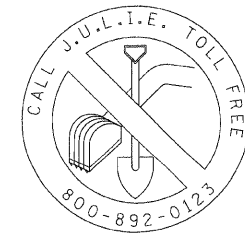
- ◻ TEMPORARY TRAFFIC SIGNAL SECTION OR PEDESTRIAN SIGNAL SECTION 12" (300mm)
- ◻ TEMPORARY CONTROLLER CABINET
- TEMPORARY SERVICE INSTALLATION
- ⑤ INDICATES NUMBER OF CONDUCTORS IN CABLE, ALL CONDUCTORS TO BE NUMBER 14 AWG WIRE UNLESS OTHERWISE NOTED.
- ▶ EMERGENCY VEHICLE LIGHT DETECTOR
- ▶ CONFIRMATION BEACON
- PEDESTRIAN PUSHBUTTON DETECTOR
- ◻ VEHICLE DETECTOR, INDUCTION LOOP
- ◻ 12" (300mm) PEDESTRIAN SIGNAL SECTION
- ◻ MICROWAVE VEHICLE SENSOR
- ◻ VIDEO DETECTOR SENSOR
- ◻ CLOSED CIRCUIT TV
- ◻ BATTERY - BACK UP
- ◻ TELEPHONE CONNECTION

NOTE:
EQUIPMENT GROUND CONDUCTOR (GREEN COLOR CODED) SPLICE TO FRAME AND COVER IS REQUIRED FOR ALL HANDHOLES OR DOUBLE HANDHOLES THAT CARRY SIGNAL CABLES AND SERVICE CABLES.

I.D.O.T TRAFFIC SIGNAL INSTALLATION ELECTRICAL SERVICE REQUIREMENTS					TOTAL WATTAGE
TYPE	NO. LAMPS	WATTAGE (INCAND.)	WATTAGE (LED)	% OPERATION	
SIGNAL (RED)	8	135	17	0.50	68
(YELLOW)	8	135	25	0.25	50
(GREEN)	8	135	15	0.25	30
ARROW		135	12	0.10	
PED. SIGNAL		90	25	1.00	
CONTROLLER	1	100	100	1.00	100
ILLUM. SIGN		84		0.05	
VIDEO CAMERA	4		45	1.0	180

ENERGY COSTS TO: TOTAL = 428
ILLINOIS DEPARTMENT OF TRANSPORTATION
201 WEST CENTER COURT
SCHAUMBURG, ILLINOIS 60196-1096
ENERGY SUPPLY CONTACT: KATHY NYSTROM
PHONE: (847) 816-5489
COMPANY: COM. ED.

FOUNDATION (DEPTH)	FT. (m)	CABLE SLACK	FT. (m)	FT. (m)
TYPE A - POST	4 (1.2)	HANDHOLE	6.5 (2.0)	ALL FOUNDATIONS
D - CONTROLLER	4 (1.2)	DOUBLE HANDHOLE	13 (4.0)	MAST ARM (L) POLE
E - M. ARM POLE		SIGNAL POST	2 (1.0)	20' ± L-2'
24" (600mm)	10 (3.0)	CONTROLLER CAB.	1 (0.5)	BRACKET MOUNTED
30" (750mm)	15 (4.6)	FIBER OPTIC	13 (4.0)	PED. PUSHBUTTON
		ELECTRIC SERVICE	1 (0.5)	ELECTRIC SERVICE
		GROUND CABLE	1 (0.5)	SERVICE TO GROUND
				POST MOUNTED



Ciorba Group, Inc.
CONSULTING ENGINEERS
5507 North Cumberland Avenue, Suite 402
Chicago, Illinois 60658
Tel. 773.775.4009 Fax 773.775.4014

USER NAME: j_coleman	DESIGNED: RBG	REVISED:
PLOT SCALE: 50.0000' / IN.	DRAWN: JAG	REVISED:
PLOT DATE: 7/8/2008	CHECKED: MJL	REVISED:
	DATE: 07/09/2008	REVISED:

**STATE OF ILLINOIS
DEPARTMENT OF TRANSPORTATION**

**FAS 1317 / ILLINOIS ROUTE 113
OVER TERRY CREEK
TEMPORARY CABLE PLAN & TEMPORARY PHASE DESIGNATION DIAGRAM**

F.A.S. RTE. 1317	SECTION 111 B-2	COUNTY WILL	TOTAL SHEETS 32	SHEET NO. 11
CONTRACT NO. 60D86			FED. ROAD DIST. NO. ILLINOIS FED. AID PROJECT	