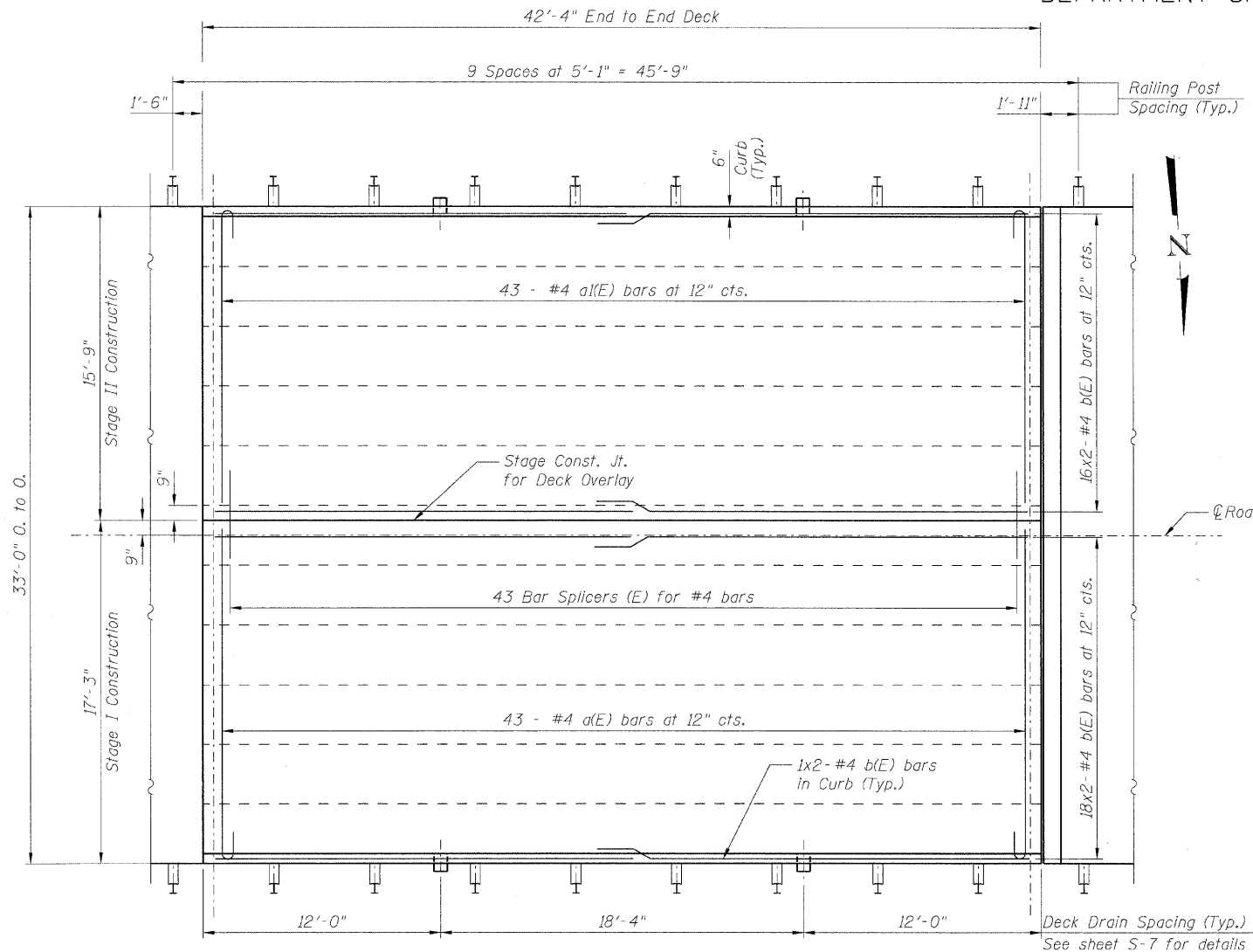
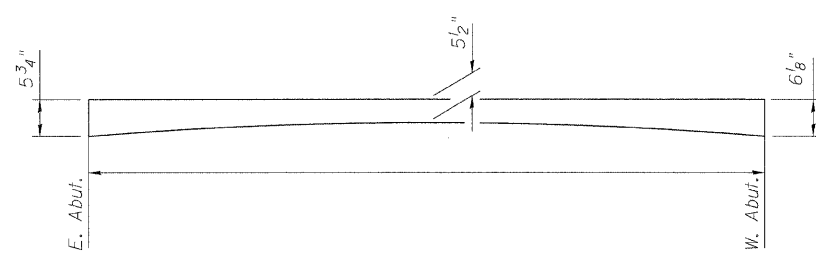


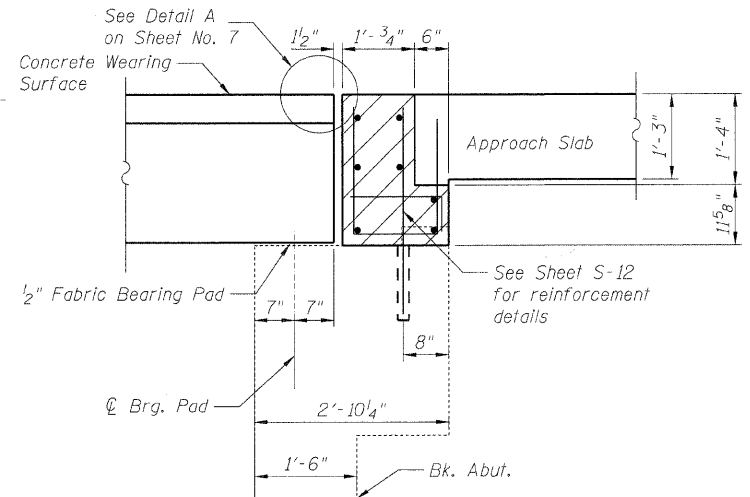
STATE OF ILLINOIS  
DEPARTMENT OF TRANSPORTATION



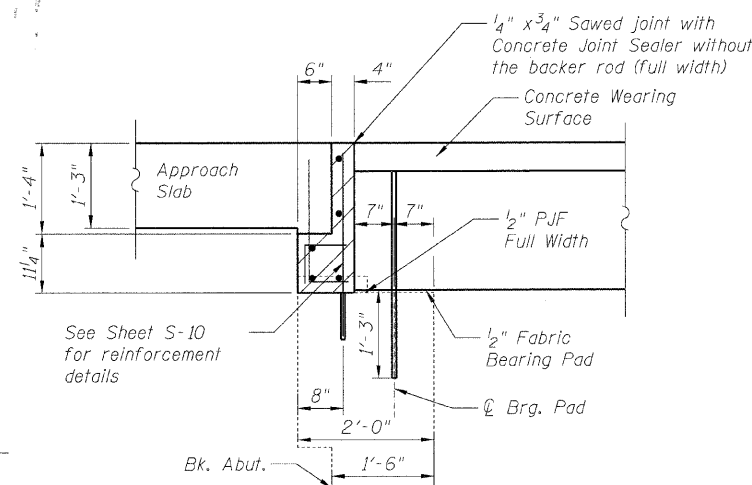
CONCRETE WEARING SURFACE - PLAN



REINFORCED CONCRETE WEARING SURFACE PROFILE

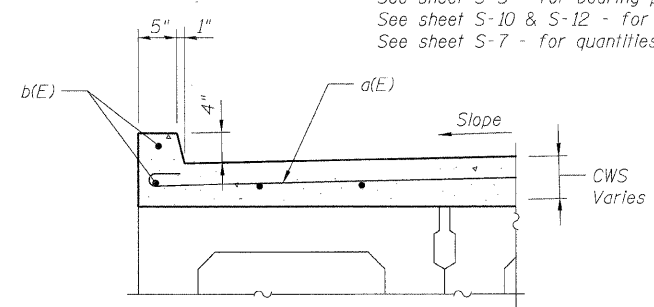


SECTION THRU WEST ABUTMENT  
(Looking South)



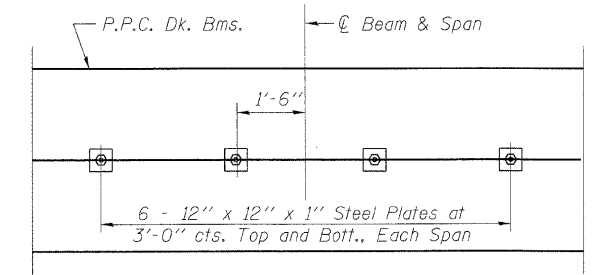
SECTION THRU EAST ABUTMENT

Notes:  
After beams have been erected, holes shall be drilled into substructure and anchor dowels placed. Dowel holes shall be filled with non-shrink grout to top of beam and allowed to cure min. 24 hrs. prior to grouting the shear keys.  
Hatched area to be poured after concrete wearing surface is in place.  
All horizontal dimensions are at right angles to beam ends.  
See sheet S-5 - for bearing pad details.  
See sheet S-10 & S-12 - for Abutment reinforcement details.  
See sheet S-7 - for quantities.

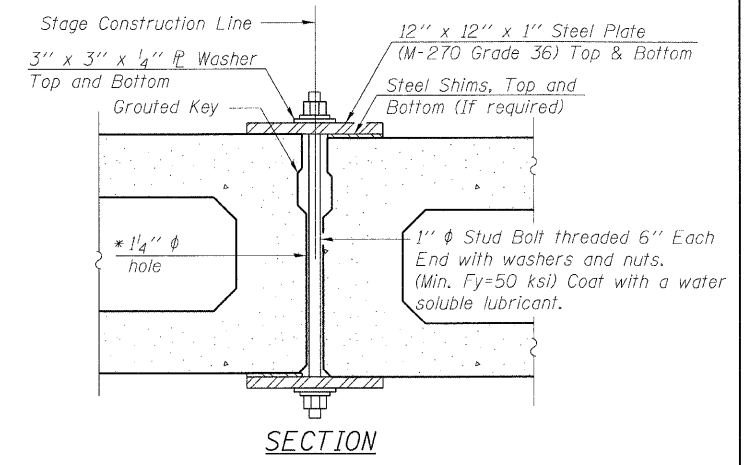


SECTION THRU CURB  
Curbs shall be poured in the field.

LAP LENGTH  
# 4 bars - 1'-8"

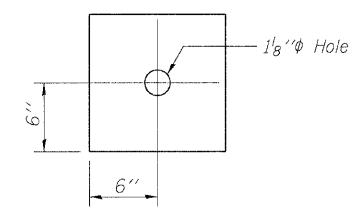


PLAN



SECTION

\* The fabricator shall cast 2" diameter semi-circular recesses in the sides of each beam adjacent to the stage construction line. These recesses shall align to form a hole at the appropriate locations for the clamping device bolts. The Contractor shall show the details on the shop drawings.



CLAMPING PLATE

SHEAR KEY CLAMPING DETAILS AT STAGE CONST. JT.

Cost included with Precast Prestressed Concrete Deck Beams.  
See Stage Construction Details for traffic lanes.

NOTES:

1. Reinforcement bars designated (E) shall be epoxy coated.
2. Bars indicated thus 2x3-#4 etc. indicates 2 lines of bars with 3 lengths per line.

SUPERSTRUCTURE  
DETAILS 1  
FAS 1317 (IL RTE 113)  
OVER TERRY CREEK  
STA. 784+13.00  
S.N. 099-0172

B. Sauter
E. Mroczek
R. Danley
B. Sauter

**CG** Ciorba Group, Inc.  
CONSULTING ENGINEERS  
5507 North Cumberland Avenue, Suite 402 Chicago, Illinois 60656  
Tel. 773.775.4009 Fax 773.775.4014 Email chicago@ciorba.com

SHEET NO. S-6	F.A.I. RTE.	SECTION	COUNTY	TOTAL SHEETS	SHEET NO.
	1317	111 B-2	WILL	32	21
S-13 SHEETS			CONTRACT NO. 60D86		
FED. ROAD DIST. NO.		ILLINOIS FED. AID PROJECT			

7/8/2008 rdanley 7/8/2008 n:\proj\3329\3329\_22\design\structure\3329\_22\_06\_Superstructure\_Details\sheet