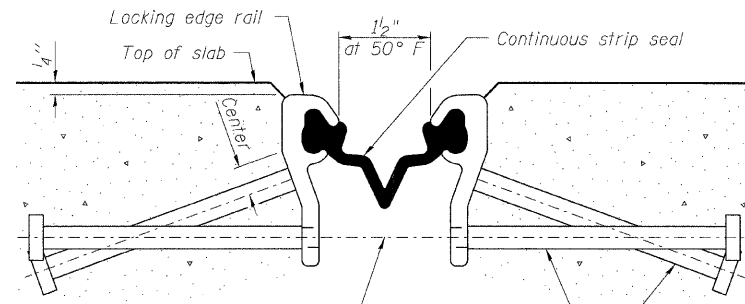


STATE OF ILLINOIS
DEPARTMENT OF TRANSPORTATION

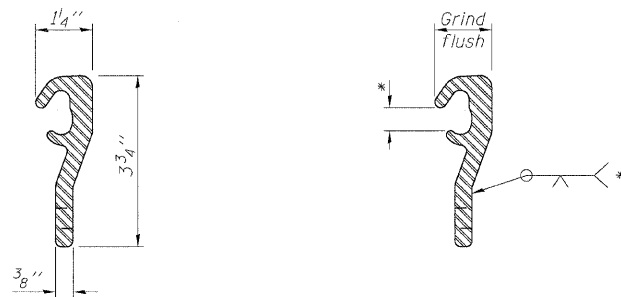


7/16" ϕ holes at 4'-0" cts. for 3/8" ϕ bolts. All bolts shall be burned, sawed, or chipped off flush with the plates after forms are removed, typ.

Place 1/2" ϕ x 6" granular or solid flux filled headed studs conforming to Article 1006.32 of the Std. Specs., automatically end welded at 1'-0" alt. cts.

SECTION THRU STRIP SEAL JOINT
FOR OVERLAY OVER DECK BEAMS

DETAIL A



LOCKING EDGE RAIL

LOCKING EDGE RAIL SPLICE

Notes:

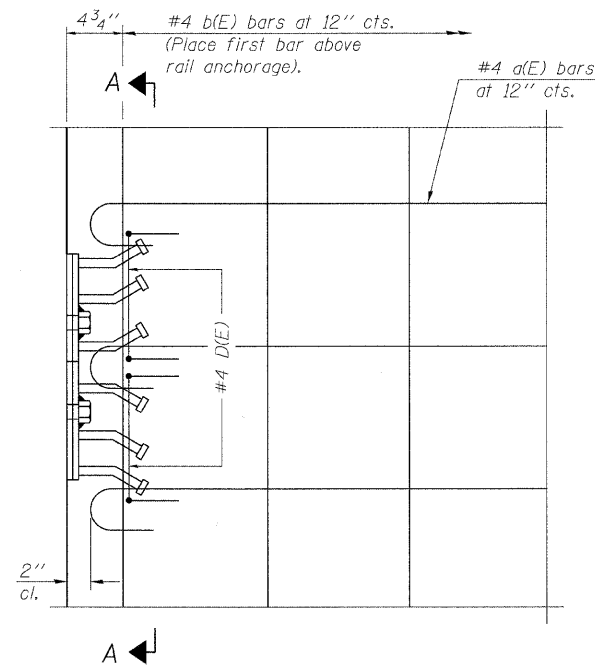
The strip seal shall be made continuous and shall have a minimum thickness of 1/4". The configuration of the strip seal shall match the configuration of the Locking Edge Rails.

The height and thickness of the Locking Edge Rails shown are minimum dimensions. The actual configuration of the Locking Edge Rails and matching strip seal may vary from manufacturer to manufacturer. Flanged edge rails will not be allowed.

The inside of the Locking Edge Rail groove shall be free of weld residue.

Locking Edge Rails may be spliced at slope discontinuities and stage construction joints.

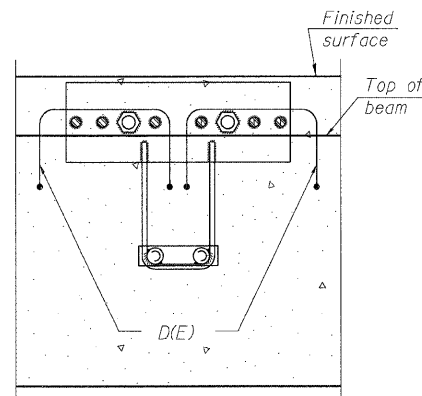
The manufacturer's recommended installation methods shall be followed.



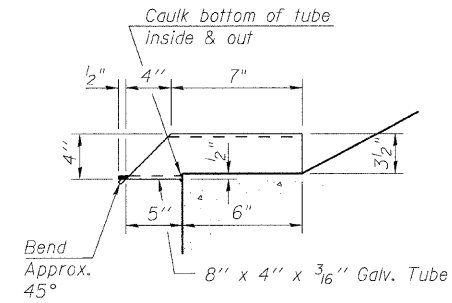
PLAN

Notes:

The rail anchorage shall be cast with the beam and the wearing surface shall be cast in the field. Formwork necessary for the wearing surface may be secured utilizing the bottom rail anchorage inserts and/or additional inserts cast into the beam. Drilling into the beam will not be permitted. For the rail posts location see sheet S-6.

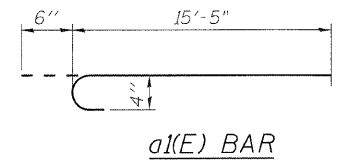


SECTION A-A

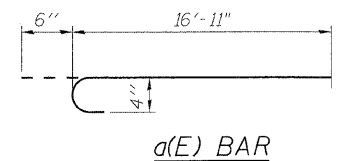


DRAIN DETAIL

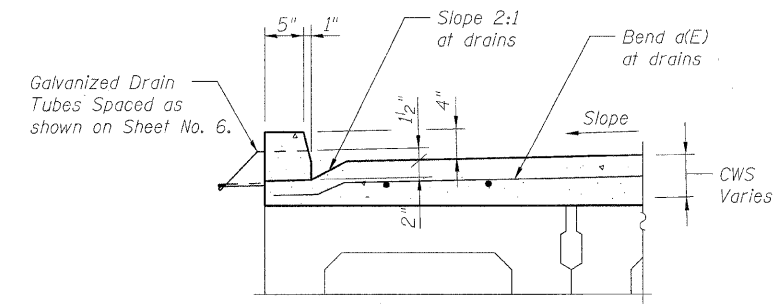
Cost of drains is included with Concrete Wearing Surface



a(E) BAR



a(E) BAR



SECTION THRU CURB

Curbs shall be poured in the field.

BILL OF MATERIAL

Bar	No.	Size	Length	Shape	
a(E)	43	#4	17'-5"	—	
a(E)	43	#4	15'-11"	—	
b(E)	72	#4	21'-8"	—	
Reinforcement Bars, Epoxy Coated				Pound	2,010
Concrete Wearing Surface				Sq. Yd.	155
Bar Splicers				Each	43
Bridge Deck Grooving				Sq. Yd.	139
Protective Coat				Sq. Yd.	155
Preformed Joint Strip Seal				Foot	33

NOTE:

1. Bars indicated thus 1x2- #5 etc. indicates 1 line of bars with 2 lengths per line.

SUPERSTRUCTURE
DETAILS 2
FAS 1317 (IL RTE 113)
OVER TERRY CREEK
STA. 784+13.00
S.N. 099-0172

B. Sauter
E. Mroczek
R. Danley
B. Sauter



Giorba Group, Inc.

CONSULTING ENGINEERS

5507 North Cumberland Avenue, Suite 402 Chicago, Illinois 60656
Tel. 773.775.4009 Fax 773.775.4014 Email chicago@giorba.com

SHEET NO. S-7	F.A.I RTE. 1317	SECTION 111 B-2	COUNTY WILL	TOTAL SHEETS 32	SHEET NO. 22
S-13 SHEETS			CONTRACT NO. 60D86		
FED. ROAD DIST. NO.		ILLINOIS FED. AID PROJECT			